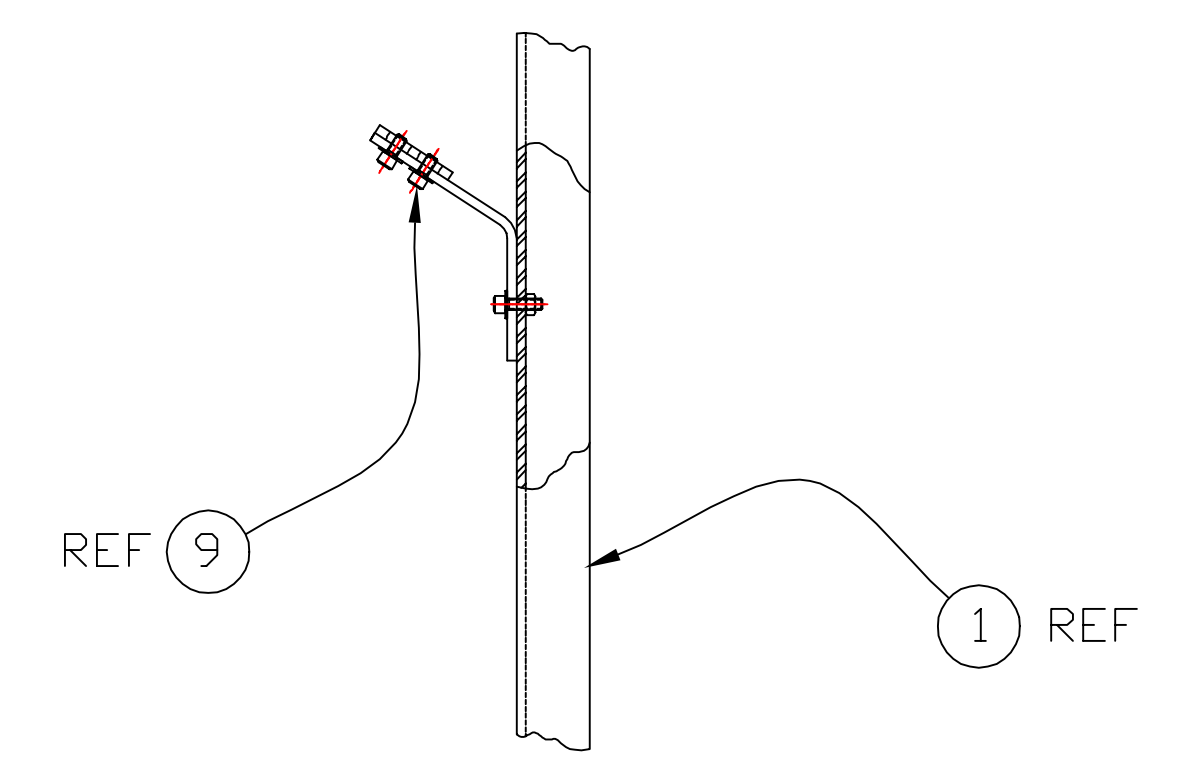
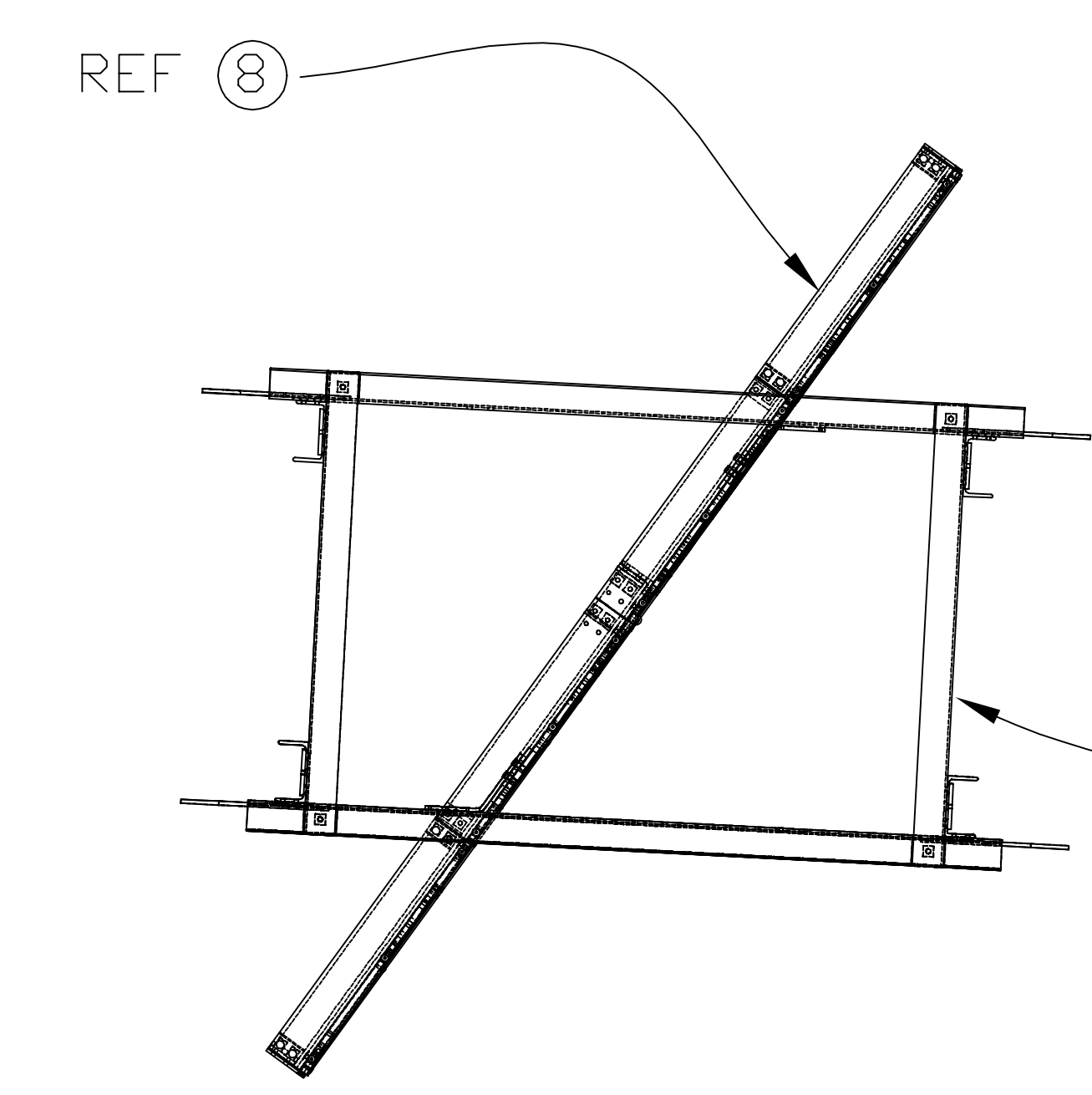
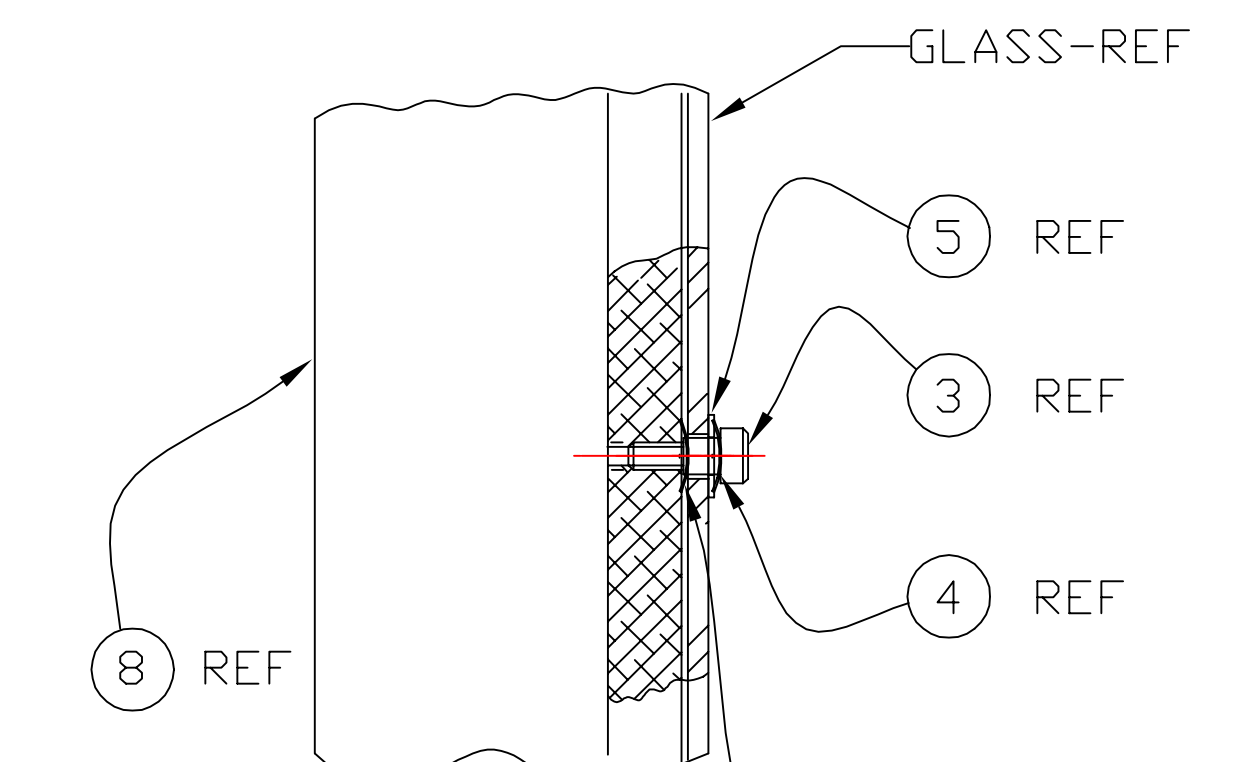
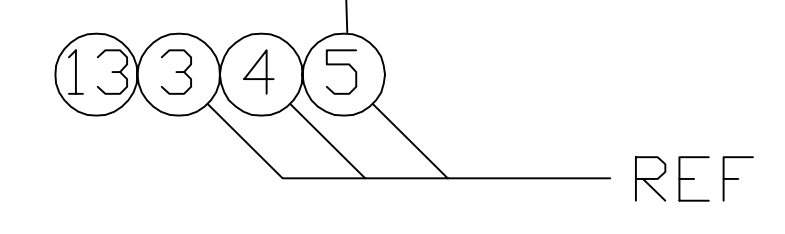
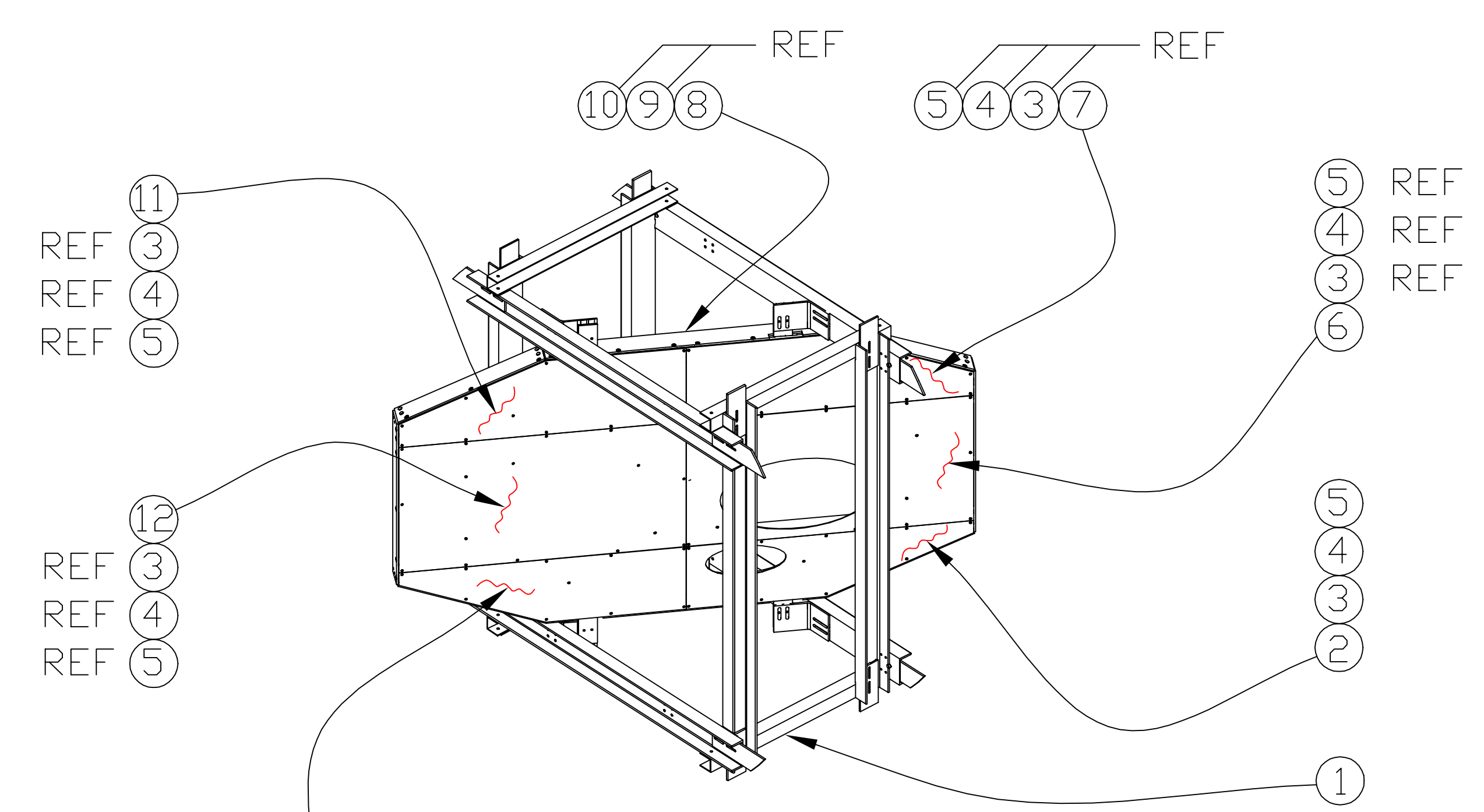


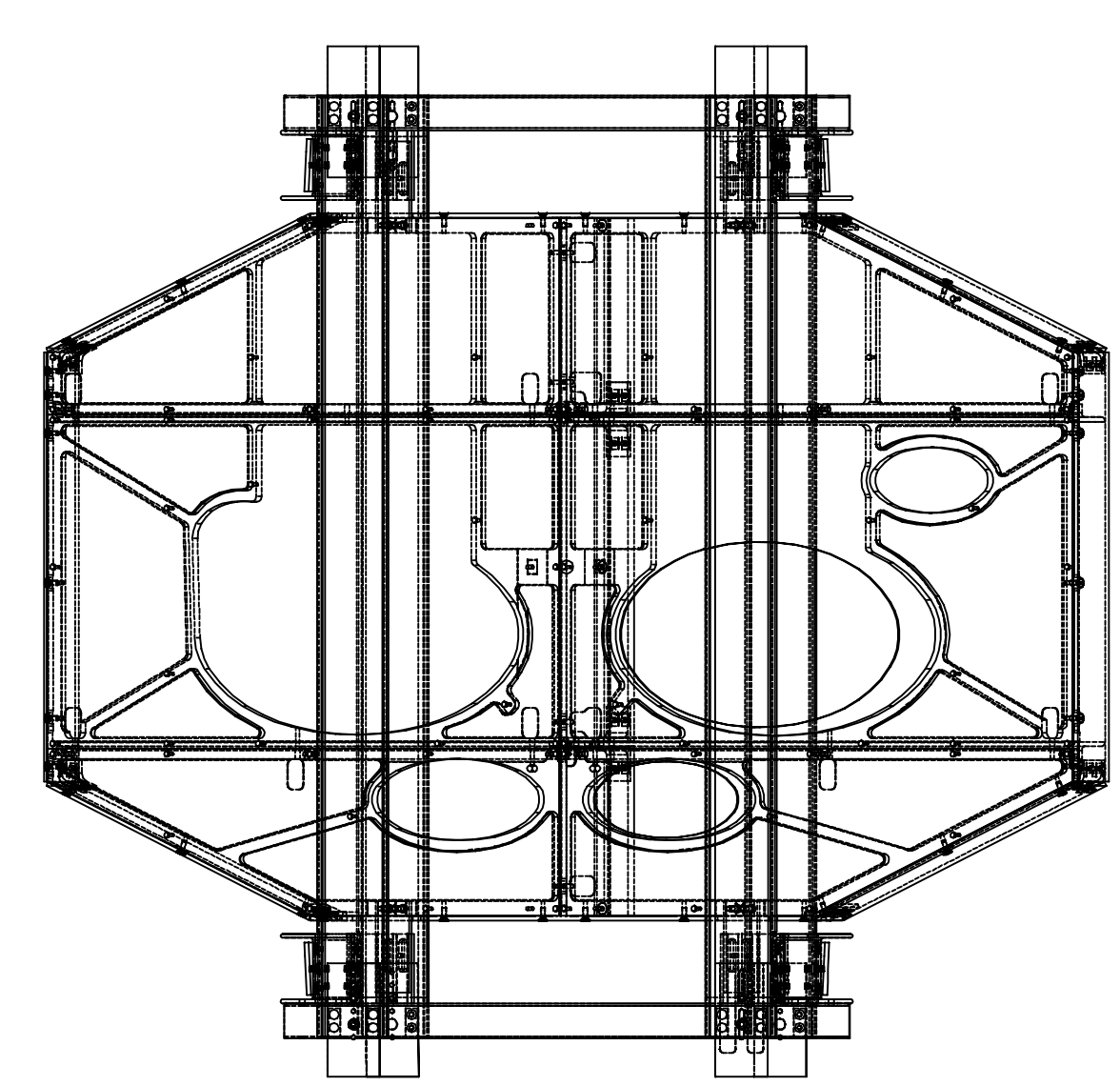
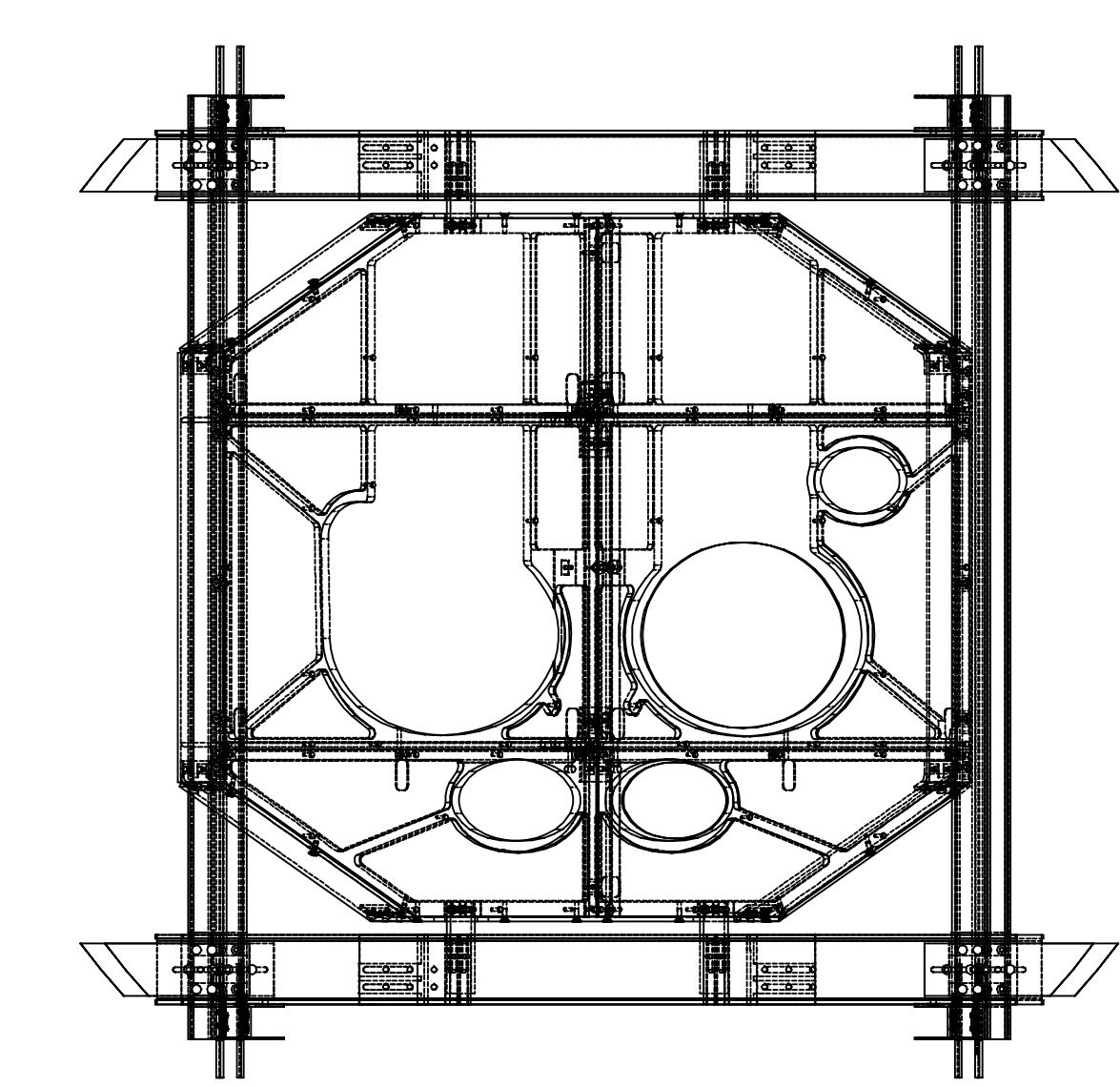
7 6 5 4 3 2 1



TYPICAL ASSEMBLY AT POINT OF GLASS SUPPORT ASSEMBLY AND OUTER FRAME ASSEMBLY.



TYPICAL ASSEMBLY AT POINT OF GLASS SUPPORT ASSEMBLY AND GLASS PLATES



REF	QTY	PART OR DRWG NO.	DESCRIPTION	MATERIAL
13	1	D990497-A	GLASS PLATE #5	-
12	1	D990502-A	GLASS PLATE #3L	-
11	1	D990493-A	GLASS PLATE #1	-
10	16	McMaster-Carr #92141A030	FLAT WASH 5/16 NDM id	STAINLESS STEEL
9	8	McMaster-Carr #92196A580	SHCS 5/16-18 x 5/8 LG	STAINLESS STEEL
8	1	D990350-A	GLASS SUPPORT ASSEMBLY, ITM/ETM	-
7	1	D990494-A	GLASS PLATE #2	-
6	1	D990388-A	GLASS PLATE #4E	-
5	76	BOKERS INC. #999	FLAT WASH .263 id x .560 od x .040 thk	STAINLESS STEEL
4	152	McMaster-Carr #9716K77	CURV'D SPRING .26id x .49od x .063 thk	STAINLESS STEEL
3	76	McMaster-Carr #94035A534	SHLD SCR 1/4 DIA x 1/4 LG/#10-32 THD	STAINLESS STEEL
2	1	D990492-A	GLASS PLATE #6E	-
1	1	D990339-A	OUTER SUPPORT ASSEMBLY, ITM-Y	-

UNLESS OTHERWISE SPECIFIED DIMENSIONS ARE IN INCHES		TOLERANCES: FRACTIONAL ± ANGULAR ± TWO PLACE DECIMAL ± THREE PLACE DECIMAL ±		INSIDE RADII FINISHED SURFACE RMS BREAK OUTSIDE CORNERS REMOVE ALL BURRS		MATERIAL:		HEAT TREAT:		FINISH:		<b>LIGO</b> CALIFORNIA INSTITUTE OF TECHNOLOGY MASSACHUSETTS INSTITUTE OF TECHNOLOGY  ARM CAVITY BAFFLE, LIVINGSTON SITE, ITM-Y ASSEMBLY	
DWG. NO.	DESCRIPTION	MATERIAL:	HEAT TREAT:	FINISH:	A	RELEASE	E000098	-	-	-	KABOT	3-3-00	CAD FILE
REFERENCE DRAWINGS	USED ON:	USED ON:	NEXT ASS'Y: D980222		REV	DESCRIPTION	DCN NUMBER	APPR'D	CHECK	DRWN	DATE		990343A.dwg
													SCALE
													NTS
													SIZE DWG. NO.
													D
													D990343-A
													SHEET
													1 OF 1

7 6 5 4 3 2 1