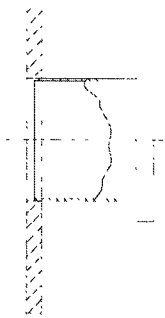


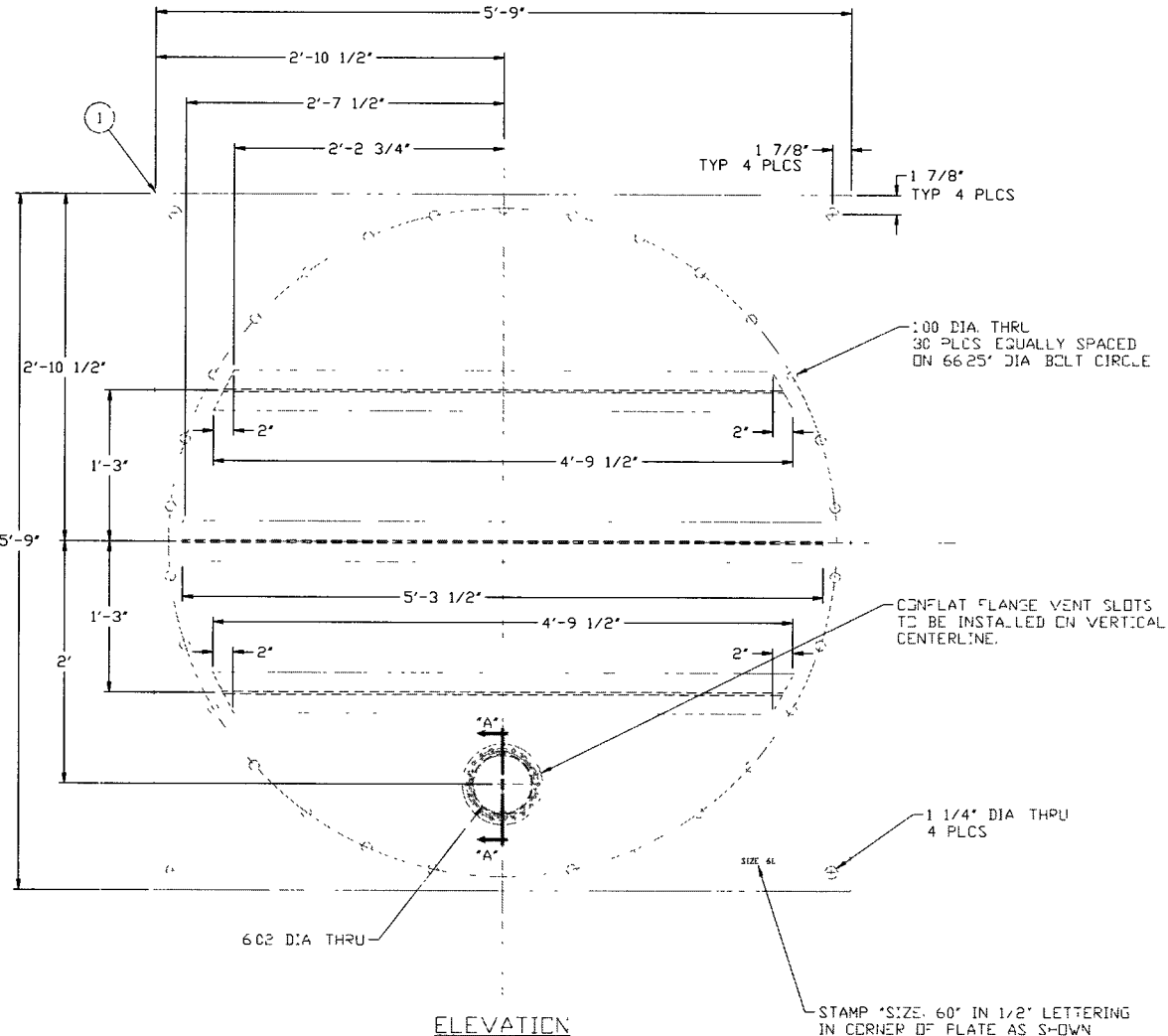
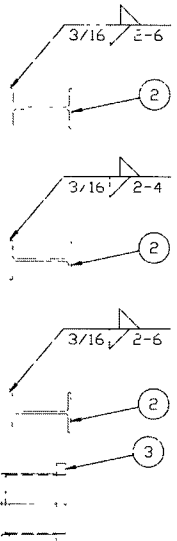
THIS CIRCULAR AREA TO HAVE 32 MICRO-FINISH ± 8 RMS

STAMP "SIZE 60" IN 1/2" LETTERING IN CORNER OF PLATE AS SHOWN

SECTION "A-A" SCALE: 1/4



0.0015



ELEVATION

STAMP "SIZE 60" IN 1/2" LETTERING IN CORNER OF PLATE AS SHOWN

ELECTRONIC COPY

LIGO-D990323-01-V

ITEM	PART NUMBER	QTY	UOM	DESCRIPTION
3	V049M313 3	1	EA	HALF NIPPLE, 6" OD TUBE X 8" CF X 7" LG
2		3306	SF	PLATE, 1/2" THK X 5'-9" SQ, 304 SS7
1		14'-1"	FT	"V" BEAM, WE X 12 MAT'L A36

PROCESS SYSTEMS INTERNATIONAL INC.
20 WALKUP DR WESTBOROUGH, MASSACHUSETTS 01581 USA

TESTING COVERS, 60" NOMINAL
FLAT FACE WITH PORT
LIGO VACUUM EQUIPMENT

CAD FILE	SIZE	DWG NO	REV
V0494192	D	V049-4-192	1
SCALE	1/8	SHEET	1 OF 1

PROPRIETARY AND CONFIDENTIAL
THIS DOCUMENT CONTAINS PROPRIETARY INFORMATION BELONGING TO PROCESS SYSTEMS INTERNATIONAL, INC OR ITS AFFILIATED COMPANIES AND SHALL BE USED ONLY FOR THE PURPOSE FOR WHICH IT WAS SUPPLIED. IT SHALL NOT BE COPIED, REPRODUCED OR OTHERWISE USED, NEAR SHALL SUCH INFORMATION BE FURNISHED IN WHOLE OR IN PART TO OTHERS EXCEPT IN ACCORDANCE WITH THE TERMS OF ANY AGREEMENT UNDER WHICH IT WAS SUPPLIED OR WITH THE PRIOR WRITTEN CONSENT OF PROCESS SYSTEMS INTERNATIONAL, INC AND SHALL BE RETURNED UPON REQUEST.

DWG NO	DESCRIPTION	DWG NO	DESCRIPTION

UNLESS OTHERWISE SPECIFIED
DIMENSIONS ARE IN INCHES
TOLERANCES:
FRACTIONAL ±
ANGULARMACH 40°-30° BEND ±2°
TWO PLACE DECIMAL ± 01
THREE PLACE DECIMAL ± .005
FINISHED SURFACE RMS
BREAK CORNERS IN
OUT:
REMOVE ALL BURRS

REV	DESCRIPTION	CHKD	DRWN	DATE	DESN
1	ISSUED FOR FABRICATION		BAR	2/8/96	0405
0	ISSUED FOR QUOTATION		REC	1/14/96	

Feb 08, 1997 - 141614