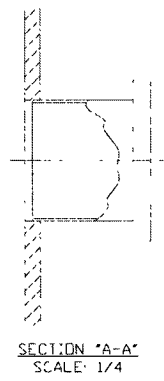
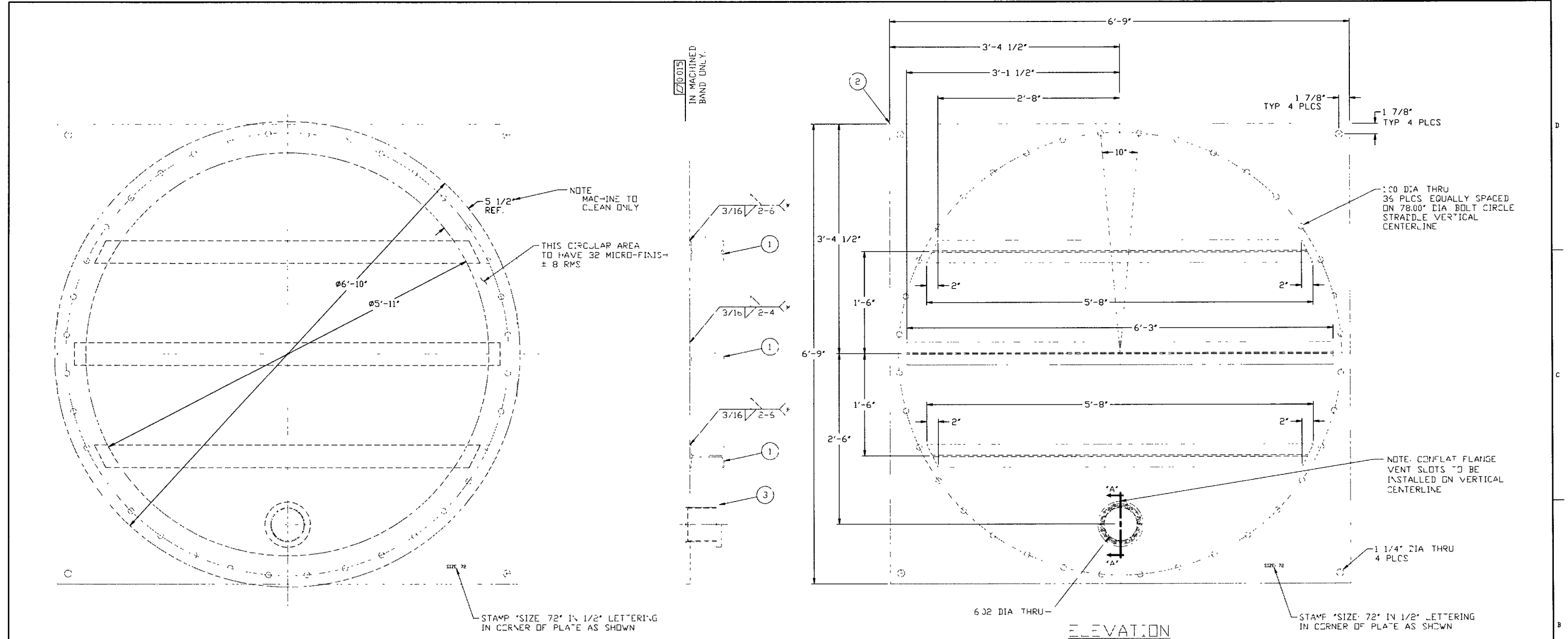


EDUCATION VERSION - NOT FOR COMMERCIAL USE



ELECTRONIC COPY

NOTES
*1 WELDING PROCESS TO MINIMIZE DISTORTION/FLATNESS OF PLATE. VENDOR TO FLATTEN ASSEMBLY AFTER WELDING

| ITEM | PART NUMBER | QTY | U/M | DESCRIPTION |
|------|-------------|------|-----|--|
| 3 | 304 S/S | 1 | EA | HALF NIPPLE, 6" OD TUBE X 8" O.D. CF X 5" LG |
| 2 | | 4556 | SF | PLATE, 1/2" THK X 6'-9" SQ, 304 SST |
| 1 | | 17-7 | FT | "V" BEAM, V6 X 12, MAT'L A36 |

LIST OF MATERIALS

| DWG NO | DESCRIPTION | DWG NO | DESCRIPTION |
|--------|--------------------|--------|-------------|
| 6 | REFERENCE DRAWINGS | 7 | |
| 6 | | 6 | |
| 5 | | 5 | |
| 4 | | 4 | |
| 3 | | 3 | |
| 2 | | 2 | |
| 1 | | 1 | |

| REV | DESCRIPTION | CHKD | DRWN | DATE | DED# |
|-----|------------------------|------|------|---------|------|
| 1 | ISSUED FOR FABRICATION | | | 2/7/97 | 0405 |
| 0 | ISSUED FOR QUOTES | | | 1/14/96 | |

PROCESS SYSTEMS INTERNATIONAL INC.
20 WALKUP DR WESTBOROUGH, MASSACHUSETTS 01581 USA

TESTING COVERS, 72" NOMINAL FLAT FACE WITH 6" PORT LIGO VACUUM EQUIPMENT

CAD FILE: V0494184
SIZE: D
DWG NO: V049-4-184
REV: 1

SCALE: 1/8
SHEET: 1 OF 1

13.12.19