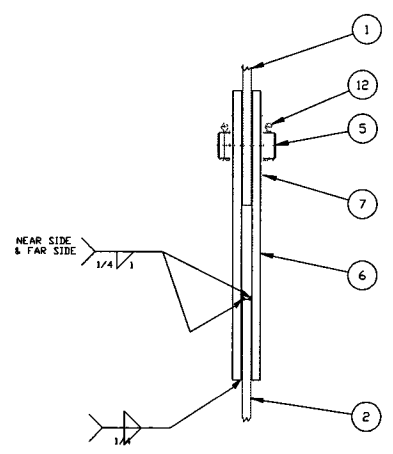
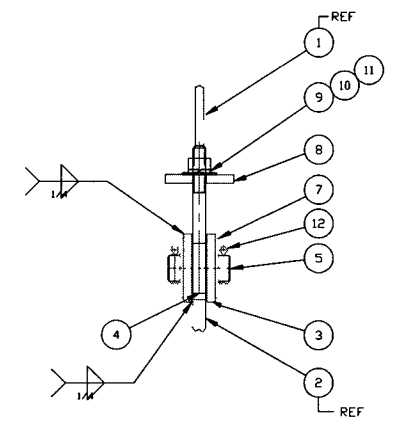


PLAN VIEW
SCALE: 1 1/2"=1'-0"



VIEW "B-B"
SCALE: 3"=1'-0"



VIEW "A-A"
SCALE: 3"=1'-0"

ELECTRONIC COPY

2-REQ'D

LIGO-D990298-P2-V

ITEM	PART NUMBER	SUFFIX	QTY	UM	DESCRIPTION
1	V049M075		2	EA	FLAT BAR 1/2X 4X 20FT 304 A479 ROLLED HARD WAY TO 61 1/2"
2					MADE FROM DROP OF ITEM (1)
3					MADE FROM DROP OF ITEM (1)
4			1	EA	EYE BOLT X 7" LG MCMASTER CARR 6251K26
5	C467924		1	FT	ROUND BAR 1 1/2" X 3' LG 304 A479
6					MADE FROM DROP OF ITEM (1)
7			4	EA	1 1/4" WASHER MCMASTER CARR 9010B041
8					MADE FROM DROP OF ITEM (2)
9	429806		1	EA	FLAT WASHER 3/4 A436
10	439806		1	EA	LOCK WASHER 3/4 A436
11	109706		1	EA	HEX NUT 3/4 A563
12			2	EA	COTTER PIN 1/4 X 3' CS

FOR COMMERCIAL USE

DWG NO	DESCRIPTION	REF	DWG NO	DESCRIPTION
			V049-4-001	BEAM SPLITTER CHAMBER ASSY

REV	DESCRIPTION	CHKD	DRWN	DATE	DESN
P2	RELEASED FOR FABRICATION	MA	03/26/96	0097	
P1	RELEASED FOR PROTOTYPE FABRICATION	PV	03/18/96		

UNLESS OTHERWISE SPECIFIED DIMENSIONS ARE IN INCHES
TOLERANCES:
FRACTIONS: ± .005
DECIMALS: ± .005
THREE PLACE DECIMALS: ± .005
FINISHED SURFACE: ± .005
BOTH SIDES: ± .005
REMOVE ALL DIMS

DO NOT SCALE THIS DRAWING

USED ON: NEXT ASS'Y

ISSUE DESCRIPTION

SCALE: AS NOTED

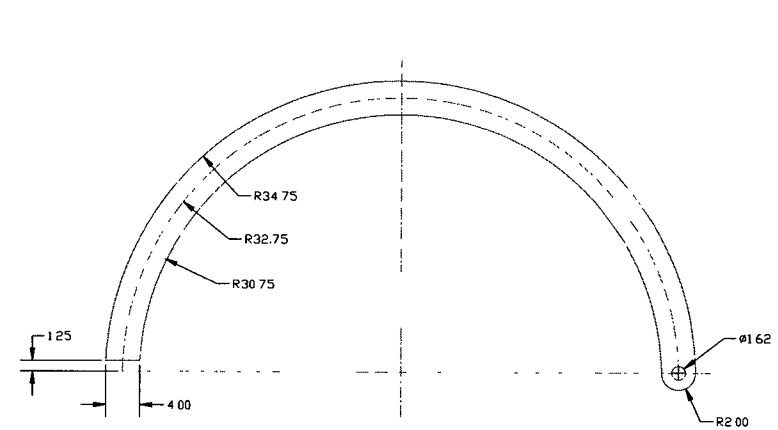
PROCESS SYSTEMS INTERNATIONAL INC.
20 WALKUP DR WESTBOROUGH, MASSACHUSETTS 01581 USA

EXTERNAL FIXTURE 61.5 I.D.
LIGO VACUUM EQUIPMENT

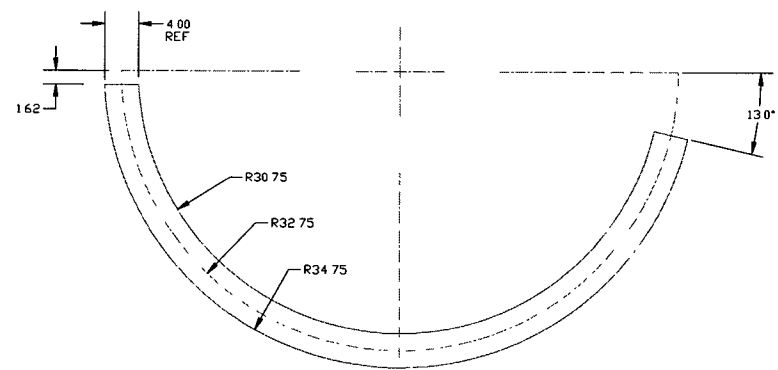
CAD FILE: 405651
SIZE: D
DWG NO: V049-4-050
REV: P2

1 OF 2

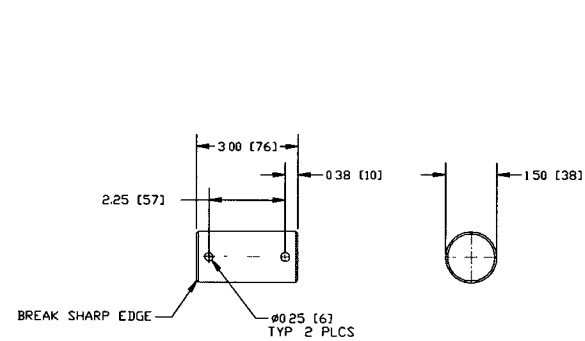
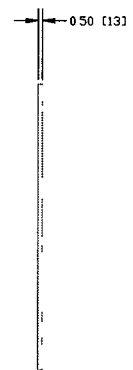
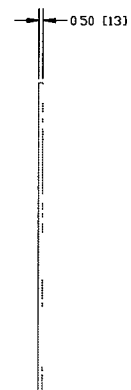
P2 03/26/96 - 1759306



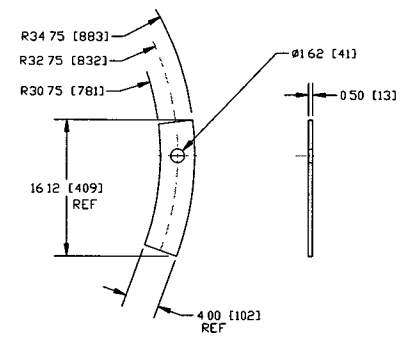
DETAIL OF ITEM 1
SCALE: 1 1/2"=1'-0"



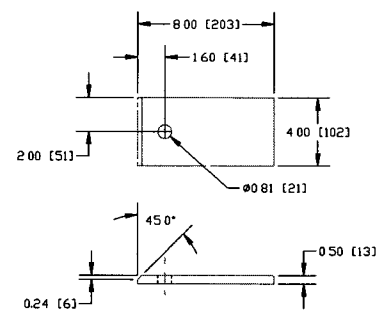
DETAIL OF ITEM 2
SCALE: 1 1/2"=1'-0"



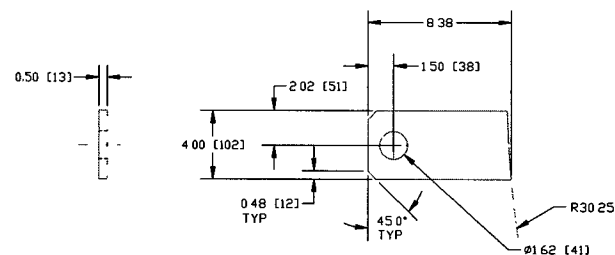
DETAIL OF ITEM 5
SCALE: HALF



DETAIL OF ITEM 6
SCALE: 1 1/2"=1'-0"
2-REQ'D



DETAIL OF ITEM 8
SCALE: 3"=1'-0"



DETAIL OF ITEM 3
SCALE: 3"=1'-0"
2-REQ'D

**ELECTRONIC
COPY**

SEE SHEET 1 FOR REVISIONS

PROCESS SYSTEMS INTERNATIONAL INC. 20 WALSH DR WESTBOROUGH, MASSACHUSETTS 01581 USA			
EXTERNAL FIXTURE 61.5 I.D.			
LIGD VACUUM EQUIPMENT			
CAD FILE 405052	SIZE D	REV. NO. V049-4-050	REV. P2
SCALE AS NOTED	SHEET 2 OF 2		

Rev. 18, 1996 - 1310-25