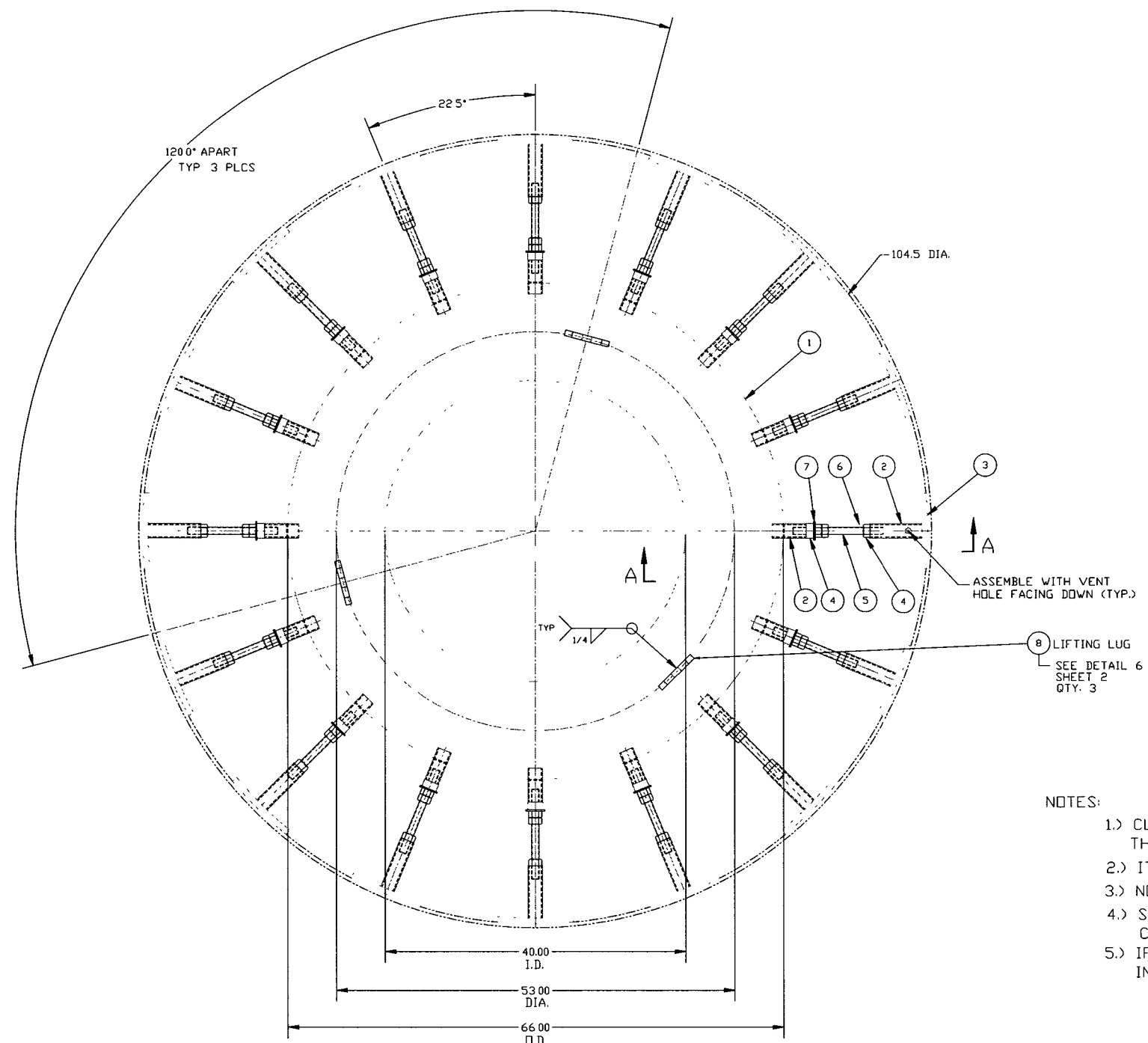


ITEM	PART NUMBER	SUFFIX	QTY	UM	DESCRIPTION
1	V049P0114		1	EA	RING, 3/4" X 66" O.D. X 40" I.D. 304 A479 BOUGHT TO SIZE
2	C011002-1D		20	FT	PIPE, SCH 40 304 A312
3	C387912-06		20	FT	BAR, FLAT 3/4" X 6" 304 A479 ROLL TO 104.5 O.D.
4	C467932		3	FT	BAR, ROUND 2" O.D. 304 A479
5	V049M076		16	FT	ROD, THREADED 1"-8 UNC A193 GRB8 NICKLE PLATED
6	C106308		48	EA	NUT, HEAVY HEX 1"-8 UNC A193 GRB8
7	C429608		16	EA	WASHER, FLAT 1" SST
8			3	EA	MADE FROM DROP OF ITEM 3



PLAN VIEW
SCALE: 1 1/2"=1'-0"

ELECTRONIC COPY

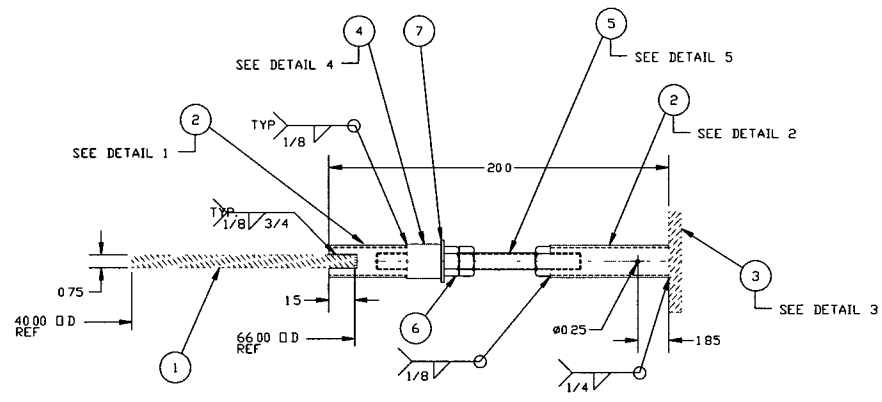
- NOTES:
- 1.) CLEANING: ASSEMBLY TO BE SCRUBBED WITH NYLON BRUSH AND DETERGENT, THEN RINSED WITH STEAM AND DRIED.
 - 2.) ITEM 2 TO BE CLEANED AND INSPECTED BEFORE EACH INSTALLATION IN A SHELL.
 - 3.) NO LUBRICANTS ARE ALLOWED ON ANY PARTS, KEEP CLEAN OF ALL HYDROCARBONS.
 - 4.) SPECIAL CARE IS REQUIRED TO PREVENT CONTAMINATION OF FIXTURE BY COVERING WITH TARPS AND STORING INSIDE WHEN NOT IN USE.
 - 5.) IF REQUIRED, CHAMBER FABRICATOR TO PROVIDE SUITABLE TEMPORARY INTERNAL SUPPORTS AND SPACERS BETWEEN FIXTURES.

2-REQ'D

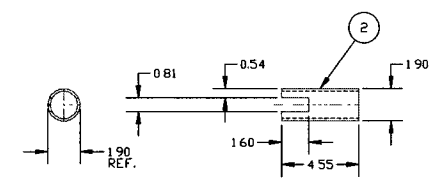
LIGO-D990296-P2-V

PROPRIETARY AND CONFIDENTIAL THIS DOCUMENT CONTAINS PROPRIETARY INFORMATION BELONGING TO PROCESS SYSTEMS INTERNATIONAL, INC. OR ITS AFFILIATED COMPANIES AND SHALL BE USED ONLY FOR THE PURPOSE FOR WHICH IT WAS SUPPLIED. IT SHALL NOT BE COPIED, REPRODUCED OR OTHERWISE USED, NOR SHALL SUCH INFORMATION BE FURNISHED IN WHOLE OR IN PART TO OTHERS EXCEPT IN ACCORDANCE WITH THE TERMS OF ANY AGREEMENT UNDER WHICH IT WAS SUPPLIED OR WITH THE PRIOR WRITTEN CONSENT OF PROCESS SYSTEMS INTERNATIONAL, INC. AND SHALL BE RETURNED UPON REQUEST.		UNLESS OTHERWISE SPECIFIED DIMENSIONS ARE IN INCHES TOLERANCES: FRACTIONAL & ANGULAR: ±0.005 DECIMAL: ±0.01 HOLE: ±0.015 FINISHED SURFACE: RNS BREAK CORNERS: IN-OUT- REMOVE ALL BURRS		DO NOT SCALE THIS DRAWING USED ON: NEXT ASS'Y		P2 RELEASED FOR FABRICATION P1 RELEASED FOR PROTOTYPE FABRICATION		MA 03/26/96 0097 PV 03/11/96		CAD FILE: 404BS1 SIZE: D DWG NO: V049-4-048 SHEET: 1 OF 2		PROCESS SYSTEMS INTERNATIONAL, INC. 20 WALKUP DR. WESTBOROUGH, MASSACHUSETTS 01581 USA BSC FIXTURE, 104.5 I.D. INTERNAL LIGO VACUUM EQUIPMENT		REV: P2 DATE: 03/11/96	
DWG NO	DESCRIPTION	DWG NO	DESCRIPTION	REV	DESCRIPTION	CHKD	DRWN	DATE	DECR	SCALE	AS NOTED	SHEET	1 OF 2		
8		7	REFERENCE DRAWINGS	6		5		4		3		2	1		

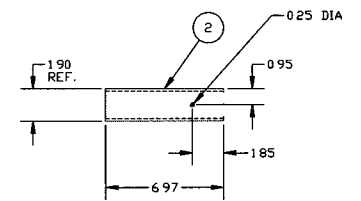
EDUCATION VERSION - NOT FOR COMMERCIAL USE



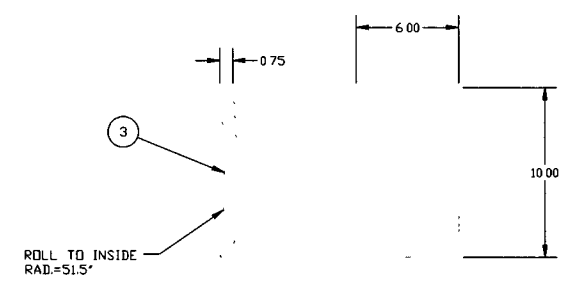
SECTION "A"-"A"
SCALE: 3"=1'-0"
16 PLCS



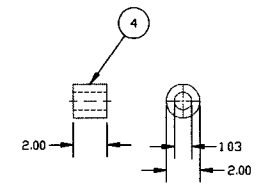
DETAIL 1
SCALE: 3"=1'-0"
QTY: 16



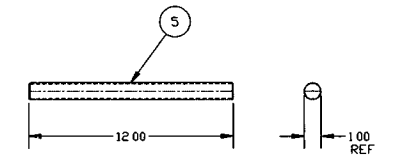
DETAIL 2
SCALE: 3"=1'-0"
QTY: 16



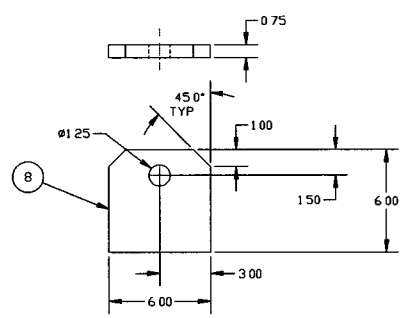
DETAIL 3
SCALE: 3"=1'-0"
QTY: 16



DETAIL 4
SCALE: 3"=1'-0"
QTY: 16



DETAIL 5
SCALE: 3"=1'-0"
QTY: 16



DETAIL 6
SCALE: 3"=1'-0"
QTY: 3

**ELECTRONIC
COPY**

SEE SHEET 1 FOR REVISIONS

PROCESS SYSTEMS INTERNATIONAL INC. 20 WALKUP DR. WESTBOROUGH, MASSACHUSETTS 01581 USA			
BSC FIXTURE 104.5 I.D. INTERNAL LIGO VACUUM EQUIPMENT			
CAD FILE 404852	SIZE D	DWG. NO. V049-4-048	REV P2
SCALE AS NOTED	SHEET 2	OF 2	

Rev. B. 1996 - 092136

EDUCATION VERSION - NOT FOR COMMERCIAL USE