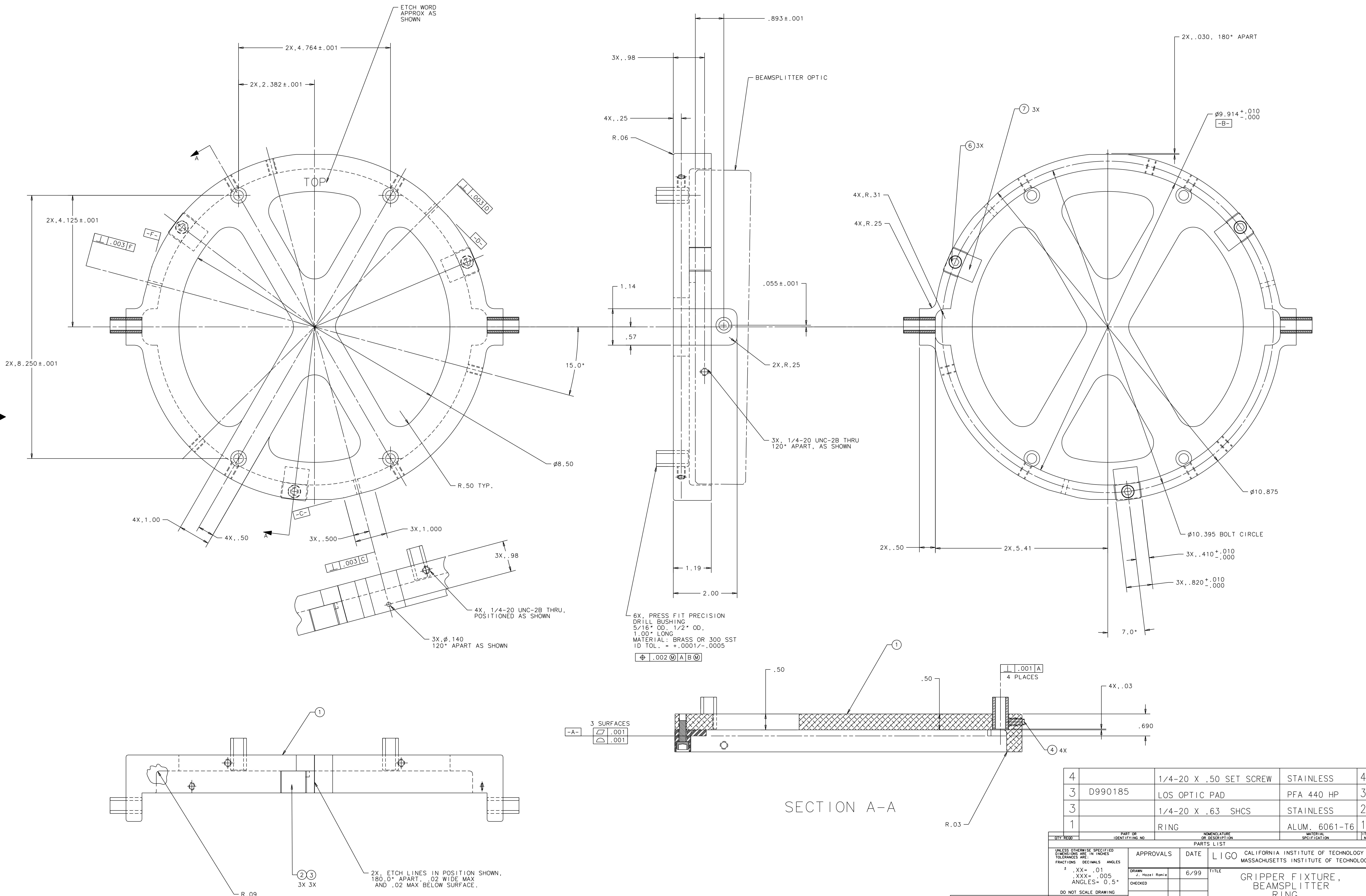


NOTES: UNLESS OTHERWISE SPECIFIED  
 1. DIMENSIONS IN INCHES.  
 2. BREAK ALL SHARP EDGES.

REV	DATE	DRAWN BY	CHECKED	DCC	DCN/DESCRIPTION
A	2/9/01	J. Romie			E010024/INITIAL RELEASE



6X, PRESS FIT PRECISION  
 DRILL BUSHING  
 5/16" OD, 1/2" OD,  
 1.00" LONG  
 MATERIAL: BRASS OR 300 SST  
 ID TOL. = +.0001/- .0005  
 Ⓢ .002 Ⓜ A Ⓢ Ⓜ

SECTION A-A

QTY	REQ	PART OR IDENTIFYING NO.	NOMENCLATURE OR DESCRIPTION	MATERIAL SPECIFICATION	ITEM NO.
4		1/4-20 X .50 SET SCREW		STAINLESS	4
3		D990185	LOS OPTIC PAD	PFA 440 HP	3
3			1/4-20 X .63 SHCS	STAINLESS	2
1			RING	ALUM. 6061-T6	1

UNLESS OTHERWISE SPECIFIED DIMENSIONS ARE IN INCHES TOLERANCES ARE: FRACTIONS DECIMALS ANGLES .XX = .01 .XXX = .005 ANGLES = 0.5° DO NOT SCALE DRAWING	APPROVALS	DATE	LIGO CALIFORNIA INSTITUTE OF TECHNOLOGY MASSACHUSETTS INSTITUTE OF TECHNOLOGY
	DRAWN J. Romie	6/99	TITLE GRIPPER FIXTURE, BEAMSPLITTER RING
	CHECKED		SIZE E
			D990191
NEXT ASSEMBLY D990190	MATERIAL	FINISH	SCALE 1/1
FILE LOCATION /home/dcc/docs/D990191.pdf			SHEET 1 OF 1