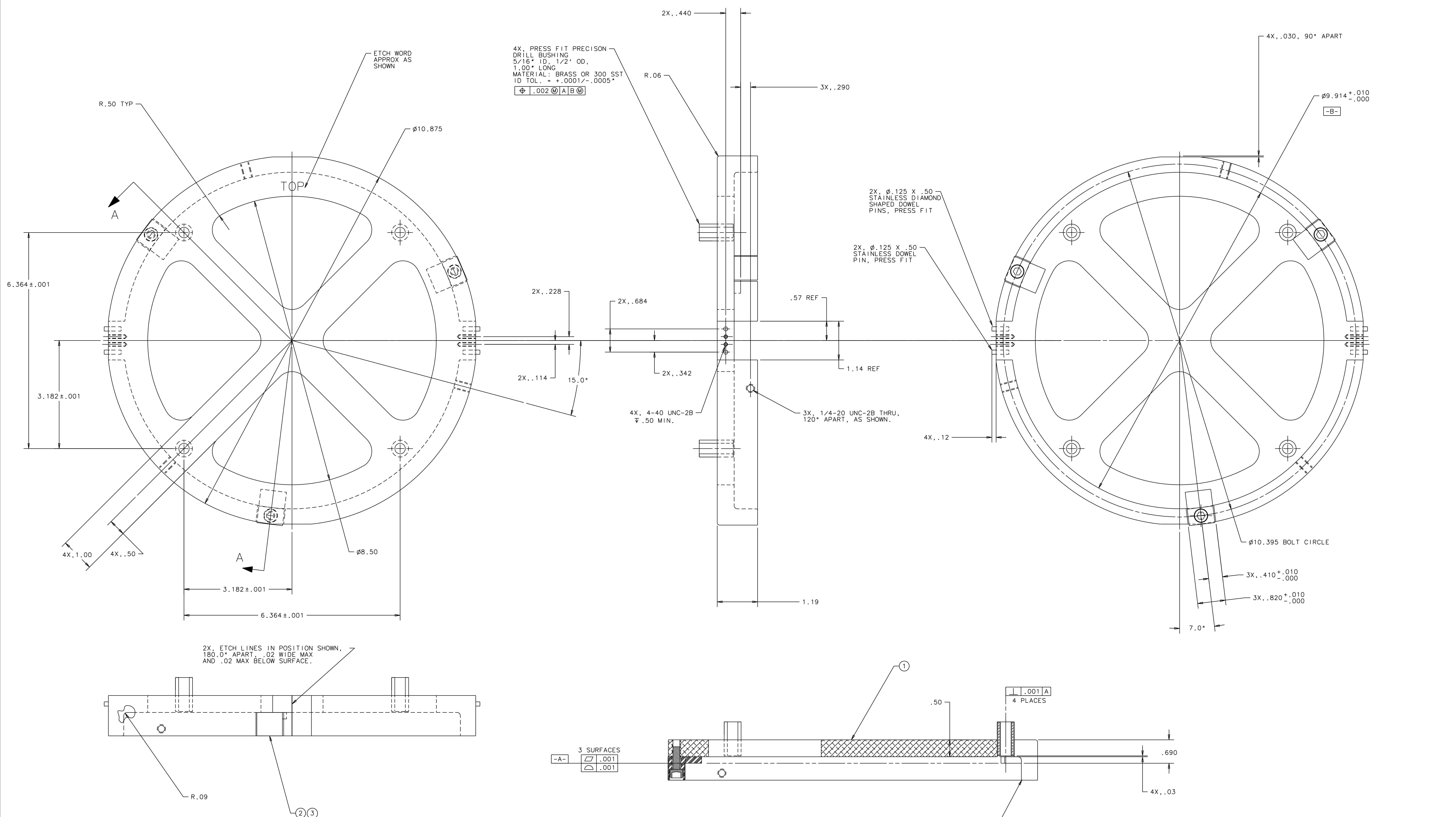


NOTES: UNLESS OTHERWISE SPECIFIED
 1. DIMENSIONS IN INCHES.
 2. BREAK ALL SHARP EDGES.

REV	DESCRIPTION OF CHANGE	SHEETS AFFECTED	APPROVAL	DATE



4X. PRESS FIT PRECISION
 DRILL BUSHING
 5/16" ID, 1/2" OD,
 1.00" LONG
 MATERIAL: BRASS OR 300 SST
 ID TOL: +.0001/- .0005"
 [1.002] [A] [B] [C]

2X. 1/4-20 X .50
 STAINLESS DOWEL
 PINS, PRESS FIT

2X. 1/4-20 X .50
 STAINLESS DOWEL
 PINS, PRESS FIT

2X. ETCH LINES IN POSITION SHOWN,
 180.0° APART, .02 WIDE MAX
 AND .02 MAX BELOW SURFACE.

SECTION A-A

QTY REQD	PART OR IDENTIFYING NO	NOMENCLATURE OR DESCRIPTION	MATERIAL SPECIFICATION	ITEM NO.
3	D990185	LOS OPTIC PAD	PFA 440 HP	3
3		1/4-20 X .63 SHCS	STAINLESS	2
1		RING	ALUM. 6061-T6	1

APPROVALS	DATE	TITLE
		LIGO CALIFORNIA INSTITUTE OF TECHNOLOGY MASSACHUSETTS INSTITUTE OF TECHNOLOGY
		GRIPPER MAGNET/STANDOFF RING

FILE LOCATION	FINISH	SCALE	SHEET
/home/dcc/docs/D990159.pdf		1/1	1 OF 1