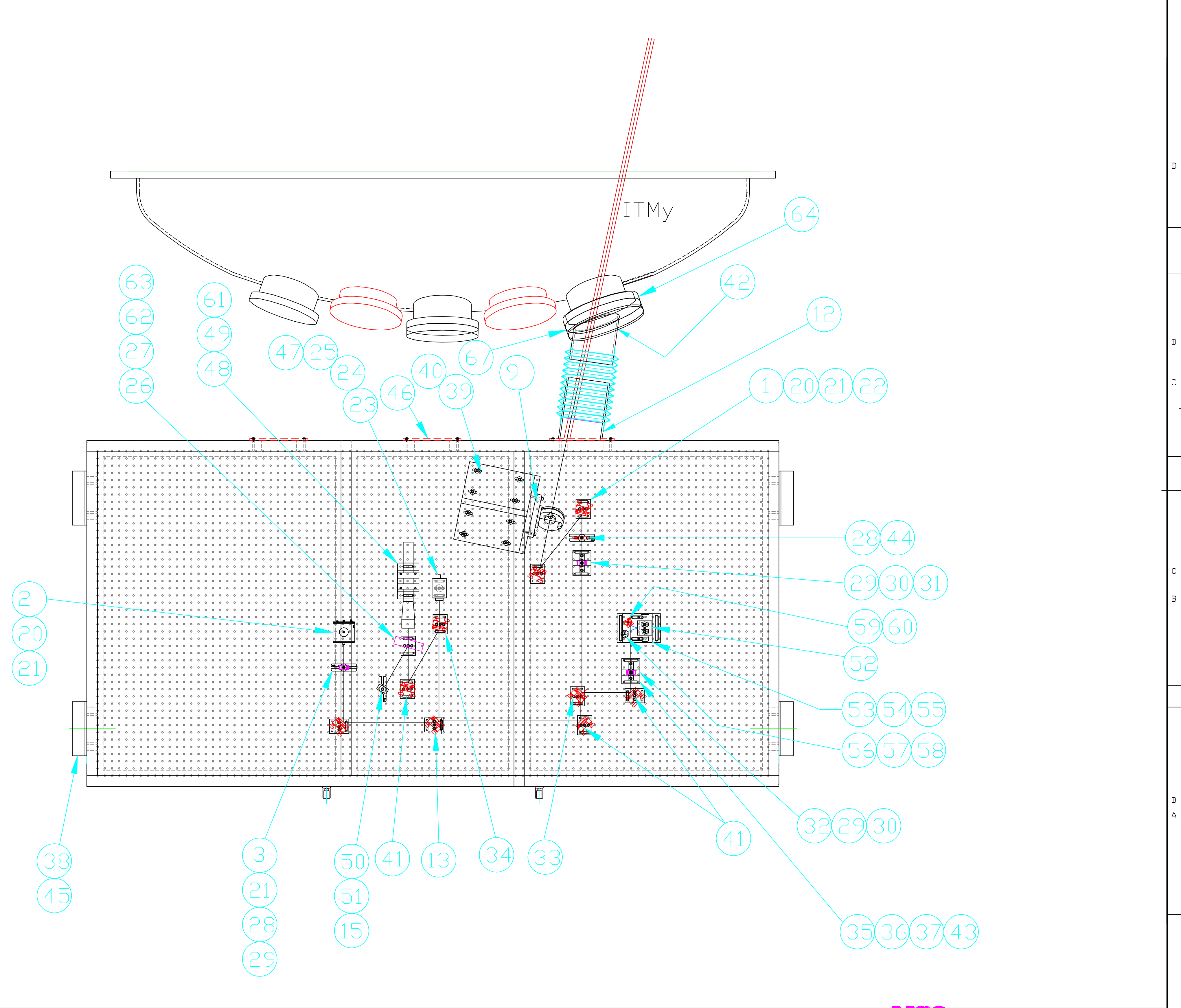
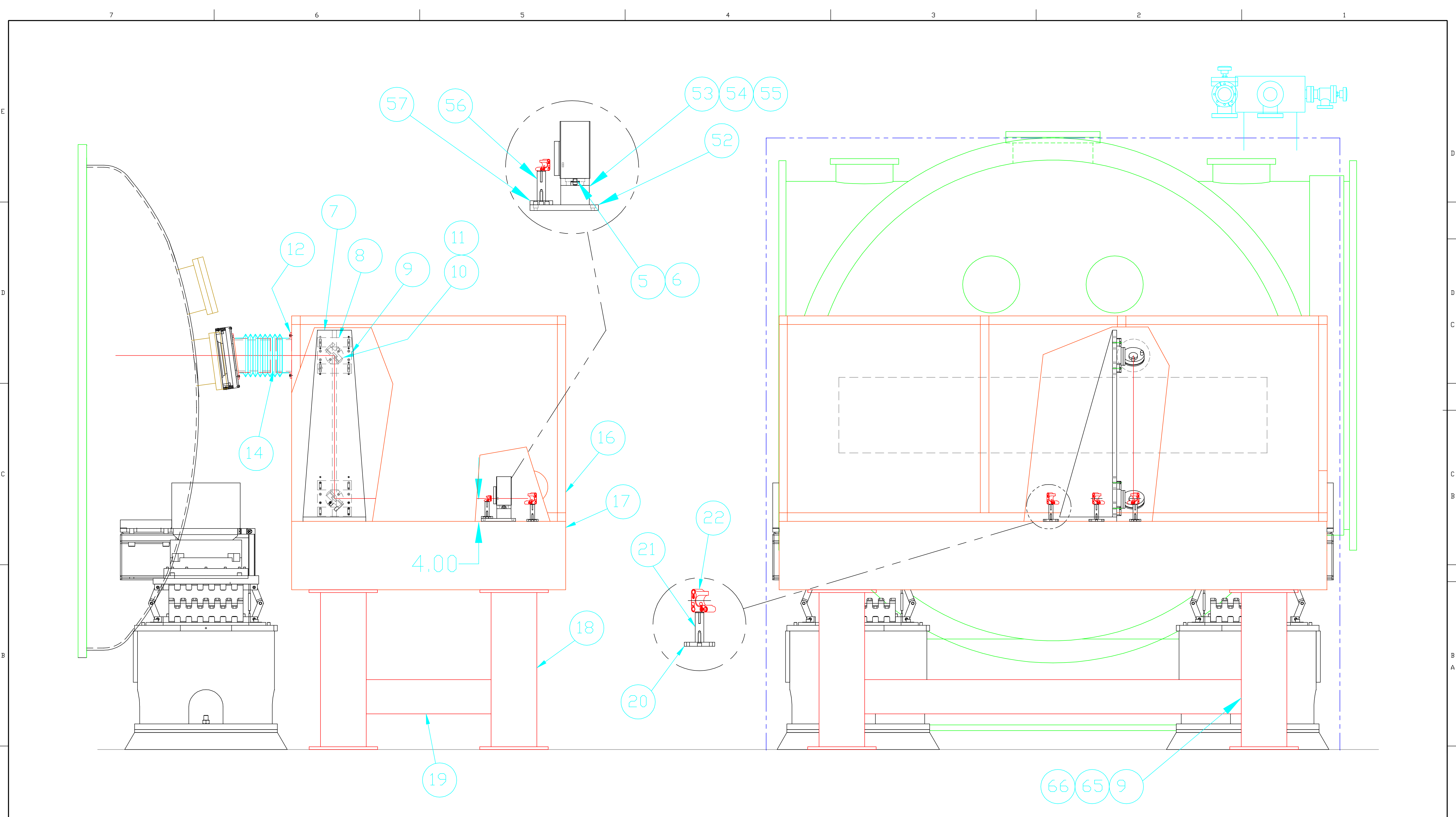


68	4	CL-8-VAC	ADJUSTABLE CLAMP	CARR-LANE
67	1	D990672-A-D	SPACER RING	-
66	A/R	P1010	1/2 -13 SPRING NUT	UNISTRUT
65	2	P1000 HG T	1 5/8 UNISTRUT, HOT GALV, T HOLES	UNISTRUT
64	1	D970197-A-D	VIEWPORT ADAPTER RING	-
63	1	710C-17'	17' CABLE	UNIBLITZ
62	1	D122	POWER SUPPLY	UNIBLITZ
61	1	LM-1	LASER MOUNT	AEROTECH
60	1	05D20DM10	MIRROR	NEWPORT
59	1	U50-A	MIRROR MOUNT	NEWPORT
58	2	D990393-A-D	FILTER PLATES	LIGO
57	1	D990347-A-D	BEAM DUMP BASE	-
56	1	D990346-A-D	OPTIC PEDESTAL	-
55	1	D990340-B-D	LSC MOUNT PLATE	-
54	2	D980345-B-D	RISER BLOCK	-
53	1	D990344-A-D	ADJUST PLATE	-
52	1	D990345-A-D	LOWER ADJUST PLATE	-
51	3	VPH-2	POST HOLDER	NEWPORT
50	3	SP-2	POST	NEWPORT
49	1	D980498-A-D	SPECTRUM ANALYZER RISER	-
48	1	MODEL 216	OPTICAL SPECTRUM ANALYZER	COHERENT
47	1	SMIC	CAMERA 'C' MOUNT ADAPTER	THORLABS
46	2	D980469-A-D	COVER PLATE	-
45	4	D980468-A-D	FEEDTHRU PLATE	-
44	1	ID-10	IRIS DIAPHRAGM	NEWPORT
43	2	84975A13	8-32 SPRING PLUNGER	MCMMASTER-CARR
42	1	D980520-A-D	VIEWPORT ADAPTER ITMy	-
41	A/R	92196A197	8-32 x 3/4" SHCS	MCMMASTER-CARR
40	A/R	92141A029	1/4" FLAT WASHERS	MCMMASTER-CARR
39	A/R	92196A544	1/4-20 x 1.25 SHCS	MCMMASTER-CARR
38	A/R	8694K89	SPONGE RUBBER	MCMMASTER-CARR
37	2	9025	TRACK CARRIER	NEW FOCUS
36	2	9022	TRACK	NEW FOCUS
35	2	9021	BASEPLATE	NEW FOCUS
34	1	10QM20HM15	MIRROR	NEWPORT
33	1	BSI-1064-90-1025-45P	90/10 BEAMSPLITTER	CVI
32	1	PLCX-25.4-77.6-C-1064	LENS	CVI
31	2	D980335-A-D	PEDESTAL 2.250"	-
30	1	PLCX-25.4-386.3-C-1064	1016.7 FI LENS	CVI
29	3	LH100	LENS MOUNT	NEWPORT
28	3	9912	BASEPLATE	NEW FOCUS
27	1	D980334-A-D	SHUTTER PEDESTAL	-
26	1	VS25S2Z0	SAFETY SHUTTER	UNIBLITZ
25	1	NDK01	CAMERA FILTER	THORLABS
24	1	XC-75	CAMERA	SONY
23	1	D980494-A-D	CAMERA MOUNT	-
22	9	U100-A28	MIRROR MOUNT	NEWPORT
21	11	D980333-A-D	2.635" PEDESTAL	-
20	12	B-2	2.0" BASE	NEWPORT
19	1	TRC-48	TIE BAR/CASTERS	NEWPORT
18	1	NN4-28-TC	FIXED LEG SYSTEM	NEWPORT
17	1	RS4000-48-12	TABLE	NEWPORT
16	1	D980332-A-D	ISC TABLE ENCLOSURE	-
15	1	LB1	BEAM BLOCK	THORLABS
14	1	CT-6	BELLOWS	A & A MFG.
13	1	10B20NP.29	50/50 BEAMSPLITTER	NEWPORT
12	1	D990394-0-D	TUBE MOUNT ITMy/ITMx	-
11	2	-	50.8 MM MIRROR	RED
10	2	SL51BM	OPTIC MOUNT	NEWPORT
9	4	D990503-A-D	ENCLOSURE MOUNTING BRACKET	-
8	2	D980330-A-D	VERTICAL ADJUST PLATE	-
7	1	D980329-A-D	PERISCOPE SUPPORT STRUCTURE	-
6	A/R	7648A35	KAPTON INSULATION TAPE	MCMMASTER-CARR
5	2	17455-D-1	INSULATING BUSHING	ACCURATE SCREW MACH.
4	A/R	92196A542	1/4-20 x 1.0" LG SHCS	MCMMASTER-CARR
3	1	PLCX-25.4-64.4-C-1064	LENS	CVI
2	1	1811-FS-AC	PHOTODETECTOR	NEW FOCUS
1	6	5104	MIRROR	NEW FOCUS
REF	QTY	PART NO.	DESCRIPTION	SUPPLIER



UNLESS OTHERWISE SPECIFIED DIMENSIONS ARE IN INCHES		TOLERANCES: FRACTIONAL ± 1/16(.16) ANGULAR ± 1° TWO PLACE DECIMAL ± .01(.025) THREE PLACE DECIMAL ± .005(.013)		FINISHED SURFACE RMS 63 BREAK CORNERS IN: .02 REMOVE ALL BURRS		MATERIAL: -		HEAT TREAT: -		FINISH: -		DWG. NO. 7		DESCRIPTION REFERENCE DRAWINGS		USED ON: -		NEXT ASS'Y: D980220-A-D		ISSUE DESCRIPTION		SCALE 1:8		SHEET 1 of 2	
A		00		PRE-RELEASE		MASON		3/00		MASON		10/6/99		CAD FILE D990136-A-S1.dwg		SIZE D		DWG. NO. D990136-A-D		DATE		SHEET		1 of 2	

LIGO
CALIFORNIA INSTITUTE OF TECHNOLOGY
MASSACHUSETTS INSTITUTE OF TECHNOLOGY
ISC TABLE ASSEMBLY
WA-ISCT9
ITMy



		UNLESS OTHERWISE SPECIFIED DIMENSIONS ARE IN INCHES													LIGO CALIFORNIA INSTITUTE OF TECHNOLOGY MASSACHUSETTS INSTITUTE OF TECHNOLOGY		
		TOLERANCES:		FINISHED SURFACE RMS												ISC TABLE ASSEMBLY PICKOFF PORT WISCT9	
		FRACTIONAL ± 1/16(.16)		63													
		ANGULAR ± 1°		BREAK CORNERS IN: .02												MASON 3/00	
		TWO PLACE DECIMAL ± .01(.025)		REMOVE ALL BURRS												MASON 10/7/99	
		THREE PLACE DECIMAL ± .005(.013)														CAD FILE D990136-A-S2.dwg	
		MATERIAL:		HEAT TREAT:		FINISH:		A		INITIAL RELEASE				DATE			
								00		PRE-RELEASE				SCALE 1:8			
DWG. NO.		DESCRIPTION		USED ON: -		NEXT ASS'Y: D980220-A-D		REV		DESCRIPTION		DCC		SYS			
		REFERENCE DRAWINGS								DET		CDS		VE			
										CC		BT		CHECK			
										DRWN		DATE		SIZE DWG. NO.			
										ISSUE DESCRIPTION		SCALE		D990136-A-D			
												SHEET		2 of 2			