

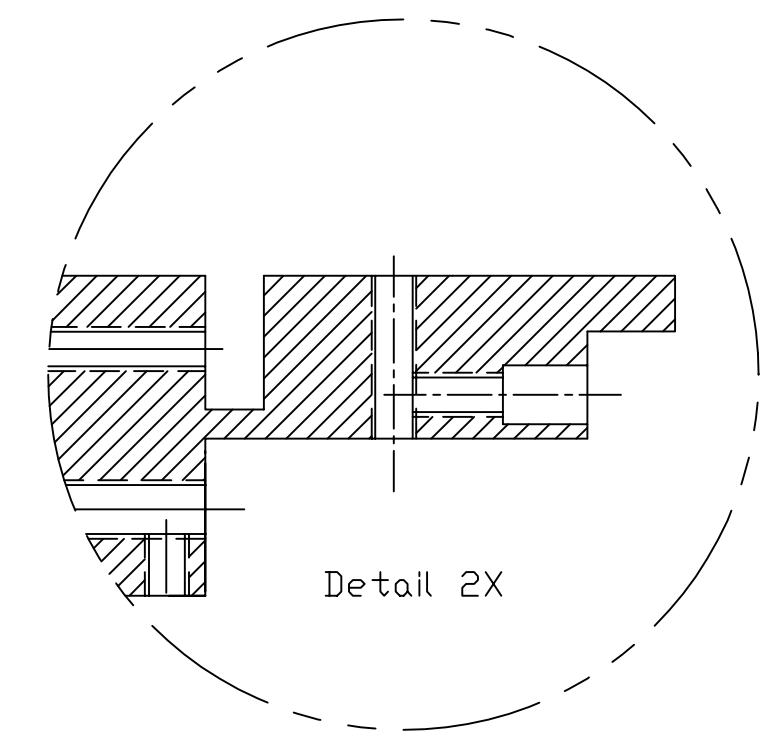
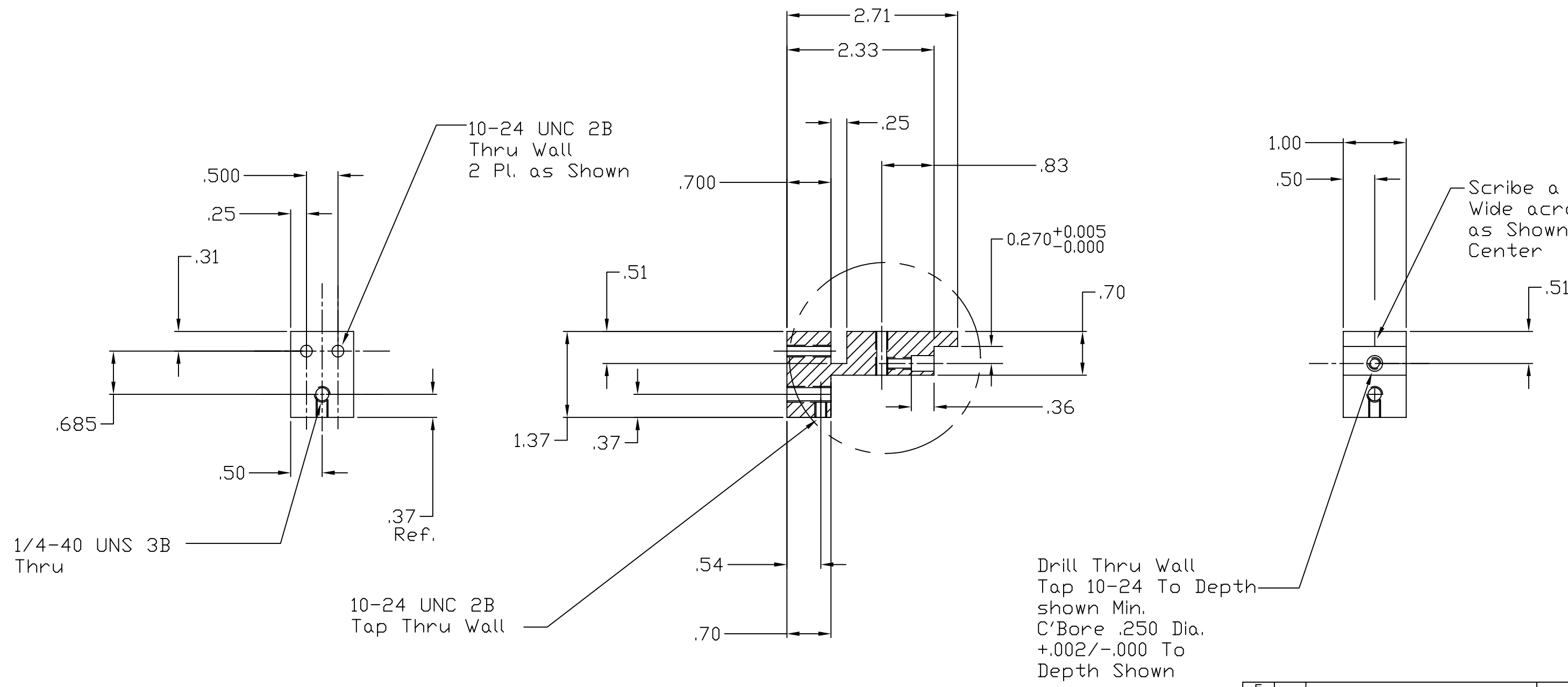
NOTES: (UNLESS OTHERWISE SPECIFIED)

Liquid contaminants/Machining Lubricants
Liquids containing hydrocarbons or other contaminants, other than the machining fluids specified herein, shall not be allowed to come into contact with suspension material at any time. All machining fluids shall be water soluble and free of sulfur, chlorine and silicone; such as Cincinnati Milacron's Cintech 410 (stainless steel).

Identification, Serial Number
A serial number shall be etched, or scribed on the part see note drawing note.

Serial Number Format
The Serial number shall be of the format: D99xxxx-x-001

Example: D990021-A-001
The drawing number, The revision number, The sequential part number



Qty: Make 3 Total Per Assembly

5	-	-	-	-	-
4	-	-	-	-	-
3	-	-	-	-	-
2	-	-	-	-	-
1	-	-	-	-	-
REF	QTY	PART or DRWG No.	DESCRIPTION	PARTS and MATERIAL LIST	

		UNLESS OTHERWISE SPECIFIED DIMENSIONS ARE IN INCHES						LIGO CALIFORNIA INSTITUTE OF TECHNOLOGY MASSACHUSETTS INSTITUTE OF TECHNOLOGY					
		TOLERANCES: FRACTIONAL ± --- ANGULAR ± ANGULAR MACH ± -- BEND ± -- TWO PLACE DECIMAL ± .02		THREE PLACE DECIMAL ± .010 FINISHED SURFACE RMS 63 BREAK CORNERS IN - DUT - REMOVE ALL BURRS				PRIMARY MIRROR MOUNT CLAMP BASE					
XXX	XXX	MATERIAL: ALUM 6061T-6	HEAT TREAT: /	FINISH: /	C	10-32 WAS 10-24			kenm	8/8/99	CAD FILE D990098-C	SIZE/DWG. NO. D	D990098-C
DWG. NO.	DESCRIPTION	USED ON: XXX	NEXT ASSY: XXX	REV	00	PRE-RELEASE	Ligo-E980321-00-D	-	-	kenm	3/29/99	SCALE FULL	SHEET 1 of 1
REFERENCE DRAWINGS				ISSUE DESCRIPTION									