

6

5

4

3

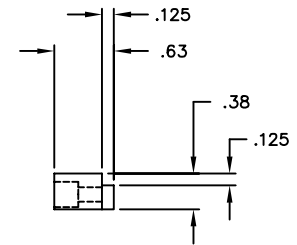
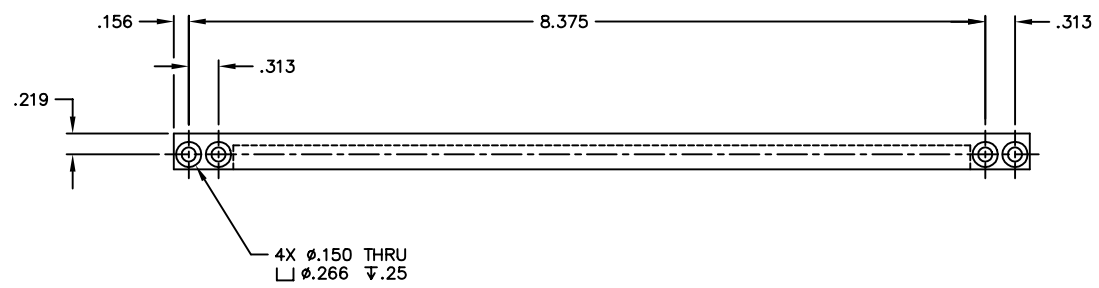
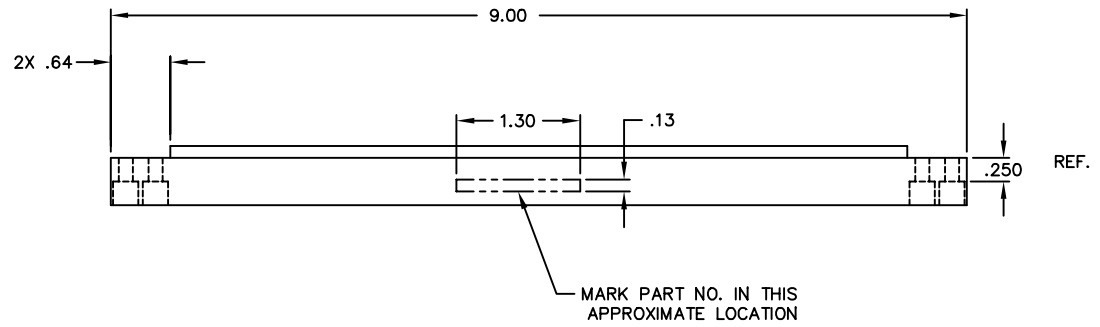
2

1

NOTES: (UNLESS OTHERWISE SPECIFIED)

~~Liquid containers or Machining lubricants~~
 Liquids containing hydrocarbons or other contaminants, other than the machining fluids specified herein, shall not be allowed to come into contact with suspension material at any time. All machining fluids shall be water soluble and free of sulfur, chlorine and silicone, such as Cincinnati Milacron's Cimtech 410 (stainless steel).

~~Identification Serial Number~~
 A serial number shall be etched, or scribed on the part see note drawing note.
~~Serial Number format~~
 The Serial number shall be of the format: D99xxxx-x-001
 Example: D990021-A-001
 The drawing number, The revision number, The sequential part number



REF. MAKE 1 PER ASSEMBLY

| REF | | QTY | | PART or DRWG No. | | DESCRIPTION | | | | MATERIAL | |
|--|--|-------------|--|--------------------------|--|-----------------|--|----------------|--|--|--|
| PARTS and MATERIAL LIST | | | | | | | | | | | |
| UNLESS OTHERWISE SPECIFIED DIMENSIONS ARE IN FEET (in) | | | | | | | | | | | |
| TOLERANCES: FRACTIONAL ±1/16 ANGULAR ±.25° TWO PLACE DECIMAL ±.01 | | | THREE PLACE DECIMAL ±.005 FINISHED SURFACE RMS 63 BREAK CORNERS IN .015 (OUT) .015 REMOVE ALL BURRS | | | | | | MIT CALIFORNIA INSTITUTE OF TECHNOLOGY MASSACHUSETTS INSTITUTE OF TECHNOLOGY | | |
| XXX | | XXX | | MATERIAL: 6061 T-6 Alum. | | HEAT TREAT: / | | FINISH: / | | B FOR FABRICATION | |
| XXX | | XXX | | USED ON: XXX | | NEXT ASS'Y: XXX | | 00 PRE-RELEASE | | kerm 6-8-99 | |
| DWG. NO. | | DESCRIPTION | | REV | | DESCRIPTION | | ICN NUMBER | | - APPR'D CHECK DRWN DATE | |
| REFERENCE DRAWINGS | | | | | | | | | | CAD FILE: D980558-B SIZE: C DWG. NO.: D980558-B SCALE: 1:1 SHEET: 1 OF 1 | |

6

5

4

3

2

1