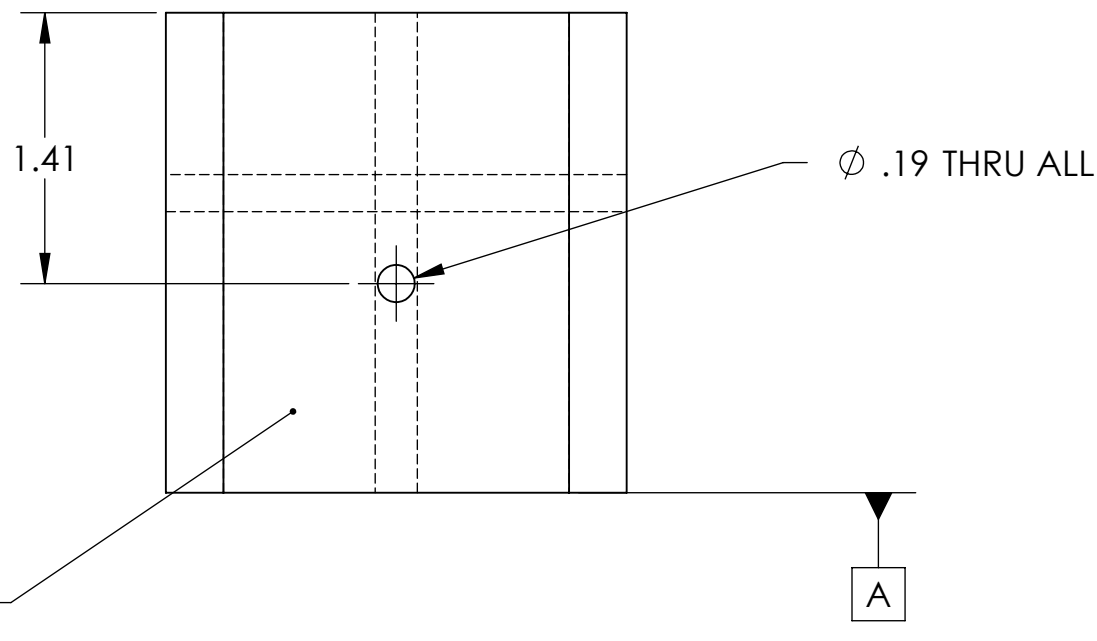
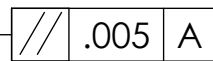
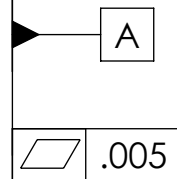
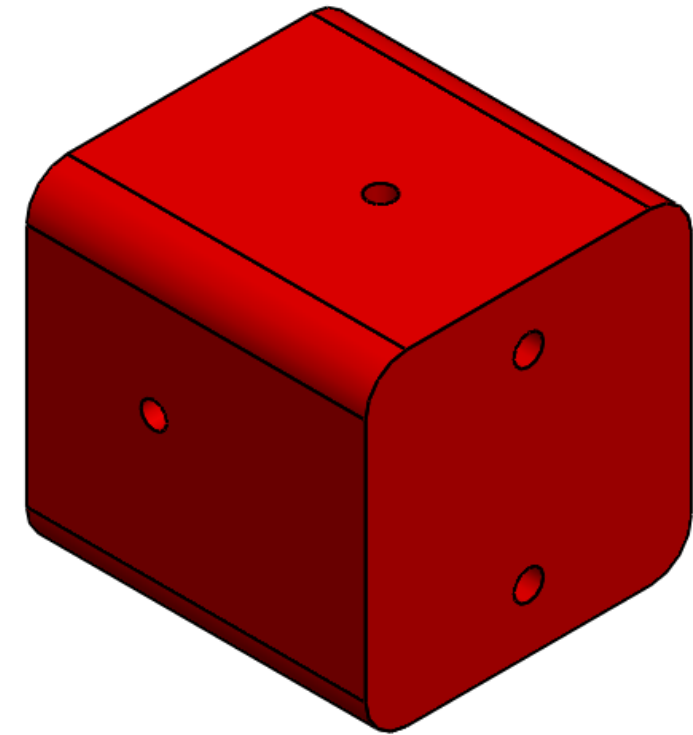
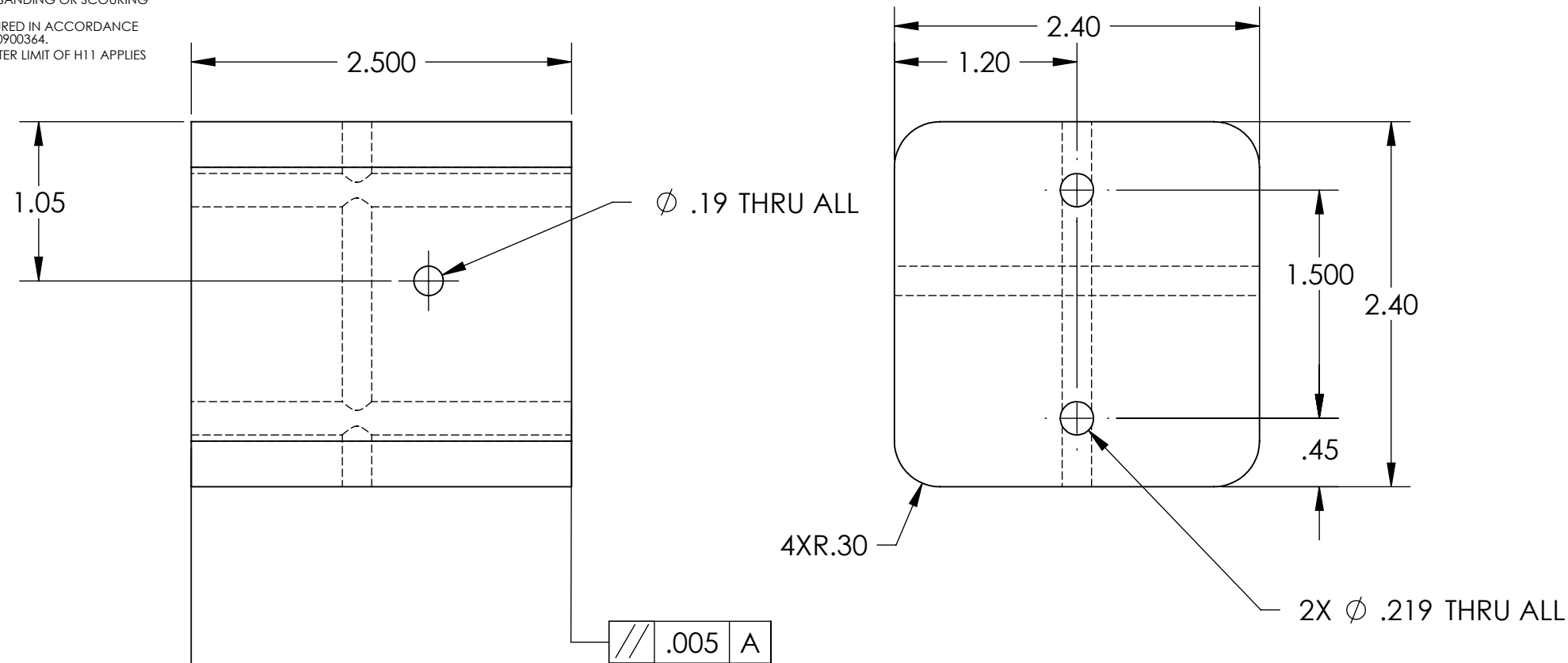


D1002427 LIGO, SUS, VIBRATION ABSORBER, 5LB MASS, PART PDM REV: X-001, DRAWING PDM REV: X-002

- NOTES CONTINUED:**
5. SCRIBE, ENGRAVE, OR MECHANICALLY STAMP (NO INKS OR DYES) DRAWING PART NUMBER, REVISION (AND VARIANT OR "TYPE" IF APPLICABLE) ON NOTED SURFACE OF PART FOLLOWED ON THE NEXT LINE WITH A THREE DIGIT SERIAL NUMBER. SERIAL NUMBERS START AT 001 FOR THE FIRST ARTICLE AND PROCEED CONSECUTIVELY. USE MINIMUM 0.12" HIGH CHARACTERS, UNLESS THE SIZE OF THE PART DICTATES SMALLER CHARACTERS. A VIBRATORY TOOL MAY BE USED.  
EXAMPLE: DXXXXXX-VY, TYPE-XX, S/N XXX
  6. MACHINE ALL SURFACES TO REMOVE OXIDES AND MILL FINISH. USE OF ABRASIVE REMOVAL TECHNIQUES IS NOT ALLOWED (INCLUDED SANDING OR SCOURING FOR MATTE FINISH).
  7. ALL PARTS TO BE MANUFACTURED IN ACCORDANCE WITH LIGO SPECIFICATIONS E0900364.
  8. A TAPPED HOLE PITCH DIAMETER LIMIT OF H11 APPLIES TO ALL TAPPED HOLES.

REV.	DATE	DCN #	DRAWING TREE #
v1	15 SEPT 2010	E1000493	-
-	-	-	-
-	-	-	-



NOTES AND TOLERANCES: (UNLESS OTHERWISE SPECIFIED)				LIGO CALIFORNIA INSTITUTE OF TECHNOLOGY MASSACHUSETTS INSTITUTE OF TECHNOLOGY		PART NAME	
DIMENSIONS ARE IN INCHES				ADVANCED LIGO		Mass for the SEI vibration absorbers 5 Lb	
TOLERANCES: .XX ± 0.015 .XXX ± 0.005				SUB-SYSTEM SEI		DESIGNER S.BISCANS	14 APR 2010
ANGULAR ± 0.1°				NEXT ASSY D1002424		DRAFTER K. BUCKLAND	15 SEPT 2010
MATERIAL 304, 316 OR 302 SSSL				FINISH 63 μinch		CHECKER	SIZE DWG. NO. B D1002427
						APPROVAL	REV. v1
						SCALE: 1:1	PROJECTION:  SHEET 1 OF 1