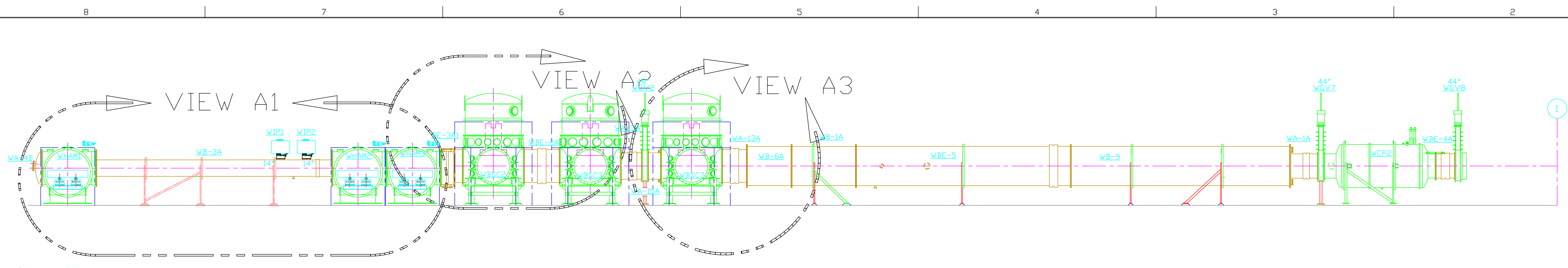


LEGEND

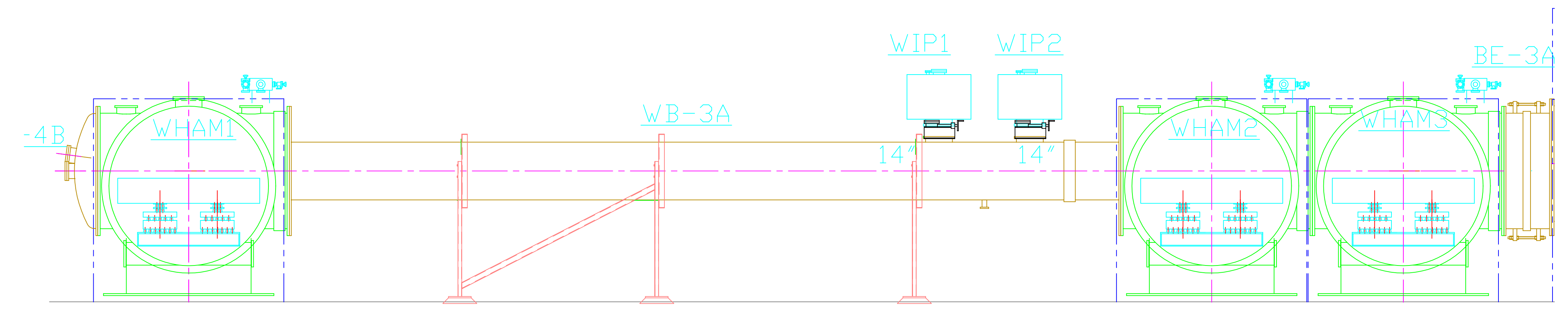
- RF —
- DIGITAL —
- ANALOG —
- SEISMIC —
- LOCAL POWER —
- TRAY REMOVAL AREA

| | | | | | | | | | | | | | | | | | | | | | |
|--|--|--|--|---|--|----------------|--|-----|--|-------------|--|------------|--|--------|--|-------|--|------|--|---|--|
| UNLESS OTHERWISE SPECIFIED DIMENSIONS ARE IN INCHES | | TOLERANCES: FRACTIONAL ± ANGULAR ± ANGULAR/RMCH ± BEND ± TWO PLACE DECIMAL ± | | THREE PLACE DECIMAL ± FINISHED SURFACE RMS BREAK CORNERS IN: DUT. REMOVE ALL BURRS | | | | | | | | | | | | | | | | LIGO CALIFORNIA INSTITUTE OF TECHNOLOGY MASSACHUSETTS INSTITUTE OF TECHNOLOGY | |
| | | MATERIAL: | | HEAT TREAT: | | FINISH: | | 00 | | PRE-RELEASE | | | | | | | | | | INTERFEROMETER CABLE TRAY LAYOUT HANFORD SITE PLAN VIEW LASER VACUUM EQUIPMENT AREA (LVEA) | |
| DWG. NO. | | DESCRIPTION | | USED ON: XXX | | NEXT ASSY: XXX | | REV | | DESCRIPTION | | DCN NUMBER | | APPR'D | | CHECK | | DRWN | | DATE | |
| | | REFERENCE DRAWINGS | | | | | | | | | | | | | | | | | | SCALE: NTS SHEET: 1 OF 21 | |

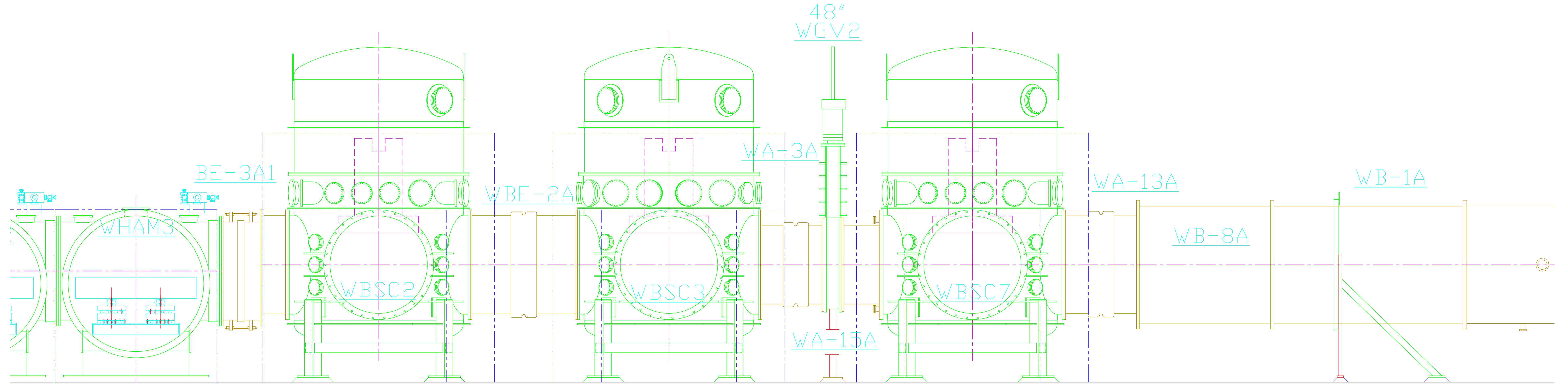


- NOTES:
1. NOT SHOWN YET IN ELEVATION:
 - CLEAN ROOMS
 - PIPING UNDER VACUUM MANIFOLD
 2. ONLY SEE EXTERNAL ENVELOPE AND OPTICS TABLES ARE SHOWN AROUND EACH CHAMBER.

ELEVATION "A-A" SEE D980266, SHEET 1
 VERTEX-RIGHT BEAM MANIFOLD



VIEW A1



VIEW A2

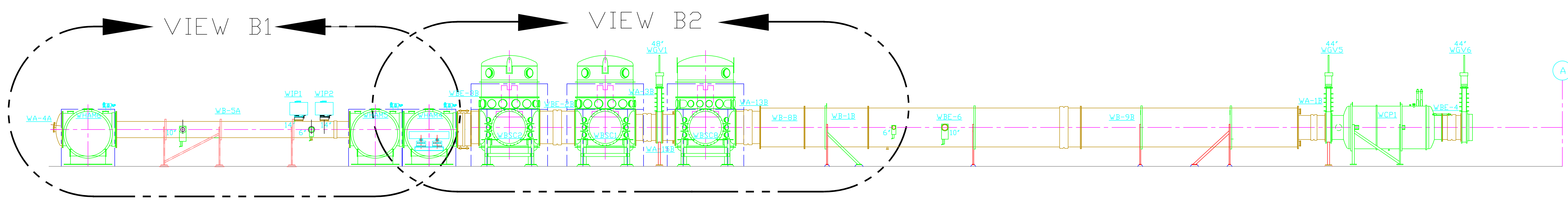
| | | | | | | | | | | | | | | | | | | | | | |
|---|--|--|--|--|--|--|--|--|--|--|--|--|--|--|--|--|--|--|--|--|--|
| UNLESS OTHERWISE SPECIFIED DIMENSIONS ARE IN FEET (in) | | | | | | | | | | | | | | | | | | | | | |
| TOLERANCES: | | | | | | | | | | | | | | | | | | | | | |
| FRACTIONAL # | | | | | | | | | | | | | | | | | | | | | |
| ANGULAR/ARCH # BEND # | | | | | | | | | | | | | | | | | | | | | |
| TWO PLACE DECIMAL # | | | | | | | | | | | | | | | | | | | | | |
| THREE PLACE DECIMAL # | | | | | | | | | | | | | | | | | | | | | |
| FINISHED SURFACE RFS | | | | | | | | | | | | | | | | | | | | | |
| BREAK CORNERS 30° BUT | | | | | | | | | | | | | | | | | | | | | |
| REMOVE ALL BURRS | | | | | | | | | | | | | | | | | | | | | |
| DO NOT SCALE THIS DRAWING | | | | | | | | | | | | | | | | | | | | | |
| USED ON: | | | | | | | | | | | | | | | | | | | | | |
| NEXT ASSY: | | | | | | | | | | | | | | | | | | | | | |
| REV | | | | | | | | | | | | | | | | | | | | | |
| DESCRIPTION | | | | | | | | | | | | | | | | | | | | | |
| ISSUE DESCRIPTION | | | | | | | | | | | | | | | | | | | | | |
| DCN NUMBER | | | | | | | | | | | | | | | | | | | | | |
| DRWN | | | | | | | | | | | | | | | | | | | | | |
| DATE | | | | | | | | | | | | | | | | | | | | | |
| SCALE | | | | | | | | | | | | | | | | | | | | | |
| NTS | | | | | | | | | | | | | | | | | | | | | |
| SHEET | | | | | | | | | | | | | | | | | | | | | |
| 2 OF 21 | | | | | | | | | | | | | | | | | | | | | |

LIGO CALIFORNIA INSTITUTE OF TECHNOLOGY
 MASSACHUSETTS INSTITUTE OF TECHNOLOGY

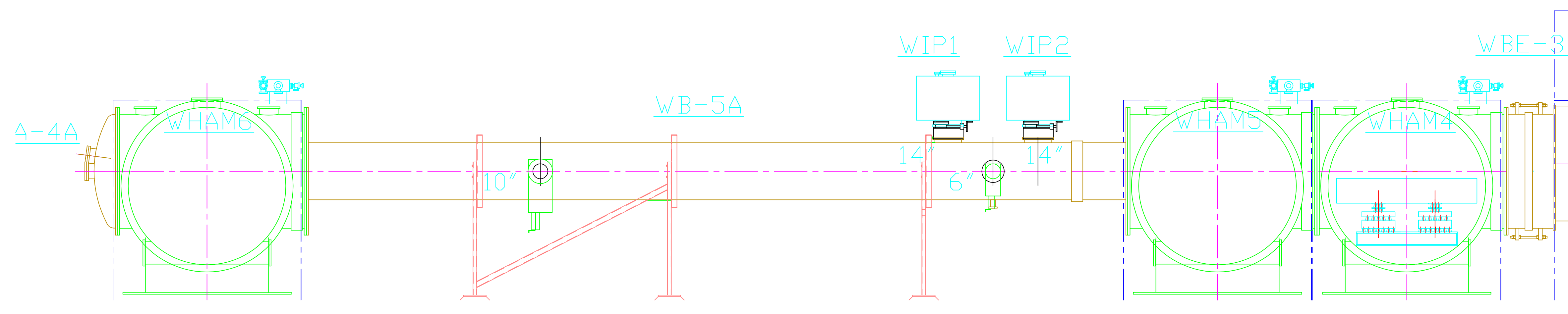
INTERFEROMETER CABLE TRAY LAYOUT
 HANFORD SITE-ELEVATION VIEW
 LASER VACUUM EQUIPMENT AREA (LVEA)
 VERTEX X-BEAM MANIFOLD

CAD FILE: D980266-00-01
 SIZE: E
 DWG. NO.: D980266-00
 SHEET: 2 OF 21

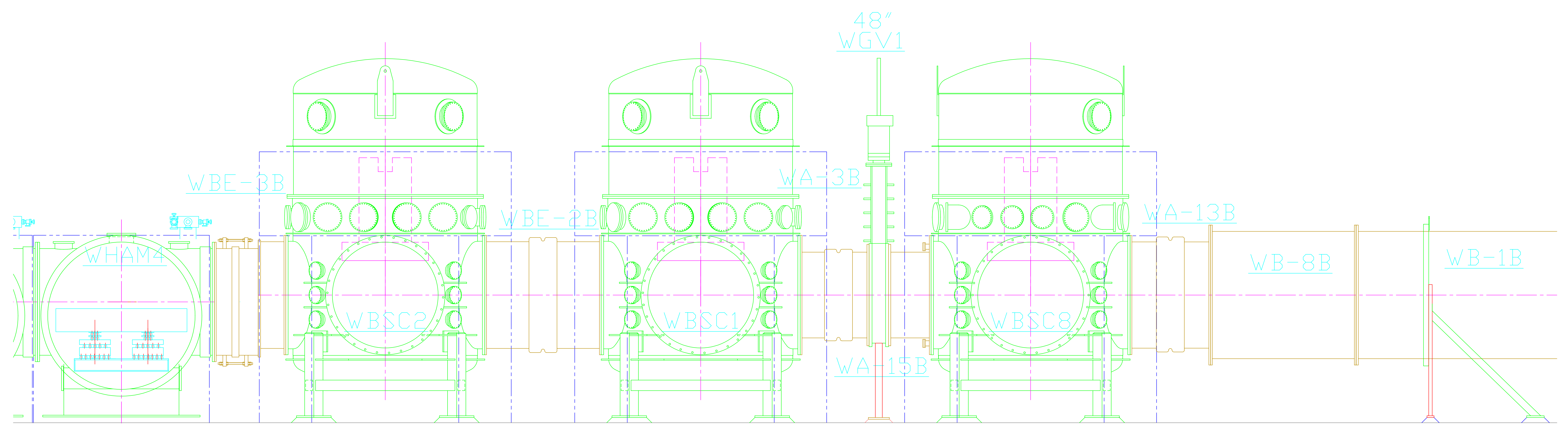
- NOTES:
1. NOT SHOWN YET IN ELEVATION
- CLEAN ROOMS
- PIPING UNDER VACUUM MANIFOLD
 2. ONLY SEI EXTERNAL ENVELOPE AND OPTICS TABLES ARE SHOWN AROUND EACH CHAMBER



ELEVATION "B-B" SEE D980266 SHEET 1
VERTEX-LEFT BEAM MANIFOLD



VIEW B1



VIEW B2

| DWG. NO. | DESCRIPTION | DWG. NO. | DESCRIPTION | REV | DESCRIPTION | ISSUE DESCRIPTION | DCN NUMBER | DATE |
|----------|--------------------|----------|-------------|-----|-------------|-------------------|------------|----------------|
| | REFERENCE DRAWINGS | | | 00 | PRE-RELEASE | | | KABOT 06-29-98 |
| | | | | | | | | |
| | | | | | | | | |
| | | | | | | | | |

LIGO CALIFORNIA INSTITUTE OF TECHNOLOGY
MASSACHUSETTS INSTITUTE OF TECHNOLOGY

INTERFEROMETER CABLE TRAY LAYOUT
HANFORD SITE-ELEVATION VIEW
LASER VACUUM EQUIPMENT AREA (LVEA)
VERTEX Y-BEAM MANIFOLD

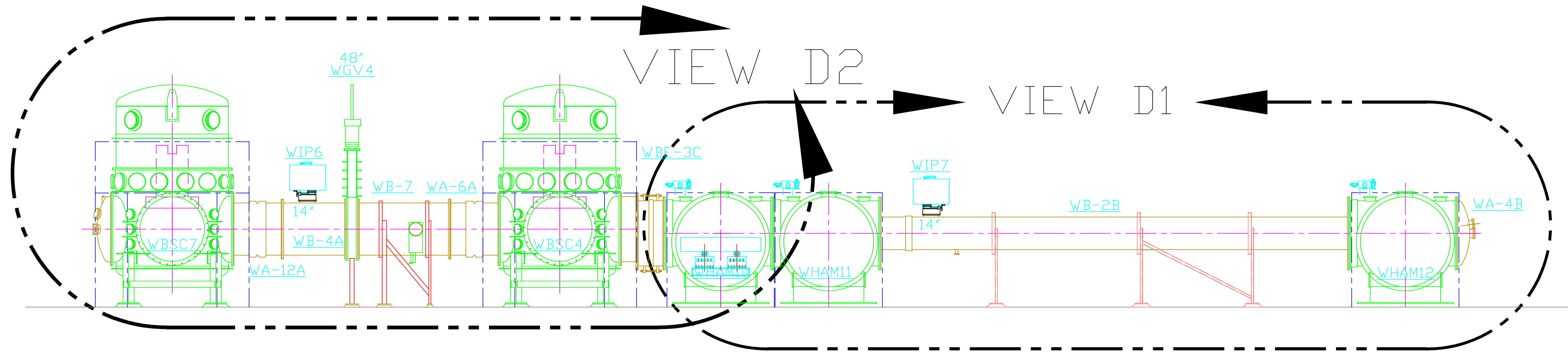
CAD FILE: D980269-00-s2.dwg
SIZE: E
DWG. NO.: D980266-00
SHEET: 3 OF 21

SCALE: NTS

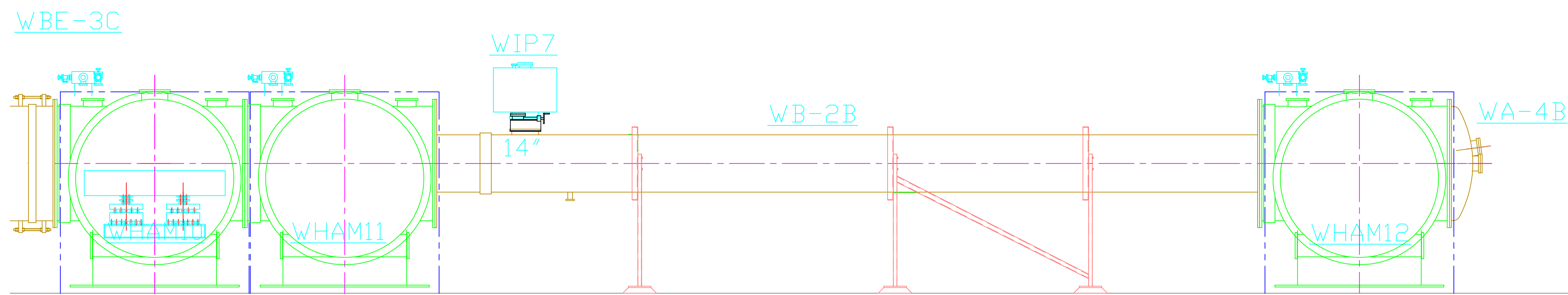
UNLESS OTHERWISE SPECIFIED
DIMENSIONS ARE IN FEET (in)
TOLERANCES:
FRACTIONAL: ± .005
ANGULAR: ± .05
THREE PLACE DECIMAL: ± .001
FINISHED SURFACE: ± .001
BREAK CORNERS: IN
REMOVE ALL BURRS

DO NOT SCALE THIS DRAWING

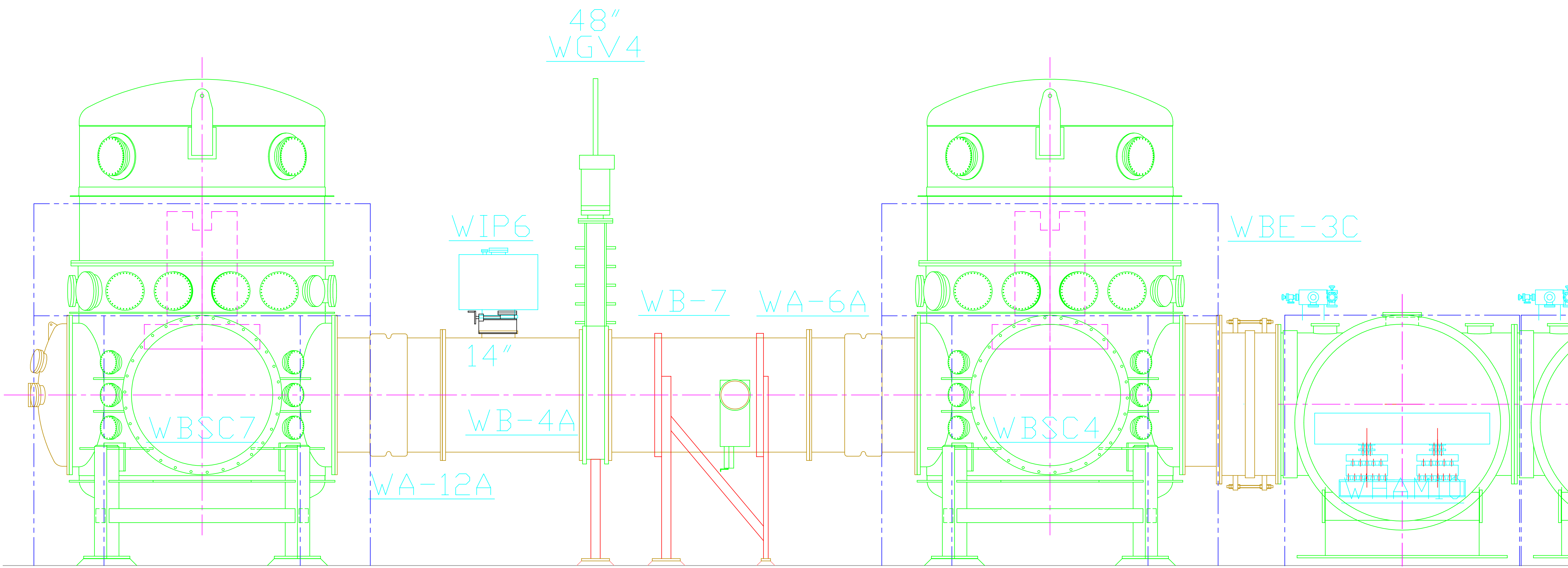
- NOTES:
1. NOT SHOWN YET IN ELEVATION:
 - CLEAN ROOMS
 - PIPING UNDER VACUUM MANIFOLD
 2. ONLY THE SEI EXTERNAL ENVELOPE AND OPTICS TABLES ARE SHOWN AROUND EACH CHAMBER.



ELEVATION "D-D" SEE D980266, SHEET 1
RIGHT BEAM MANIFOLD-DIAGONAL

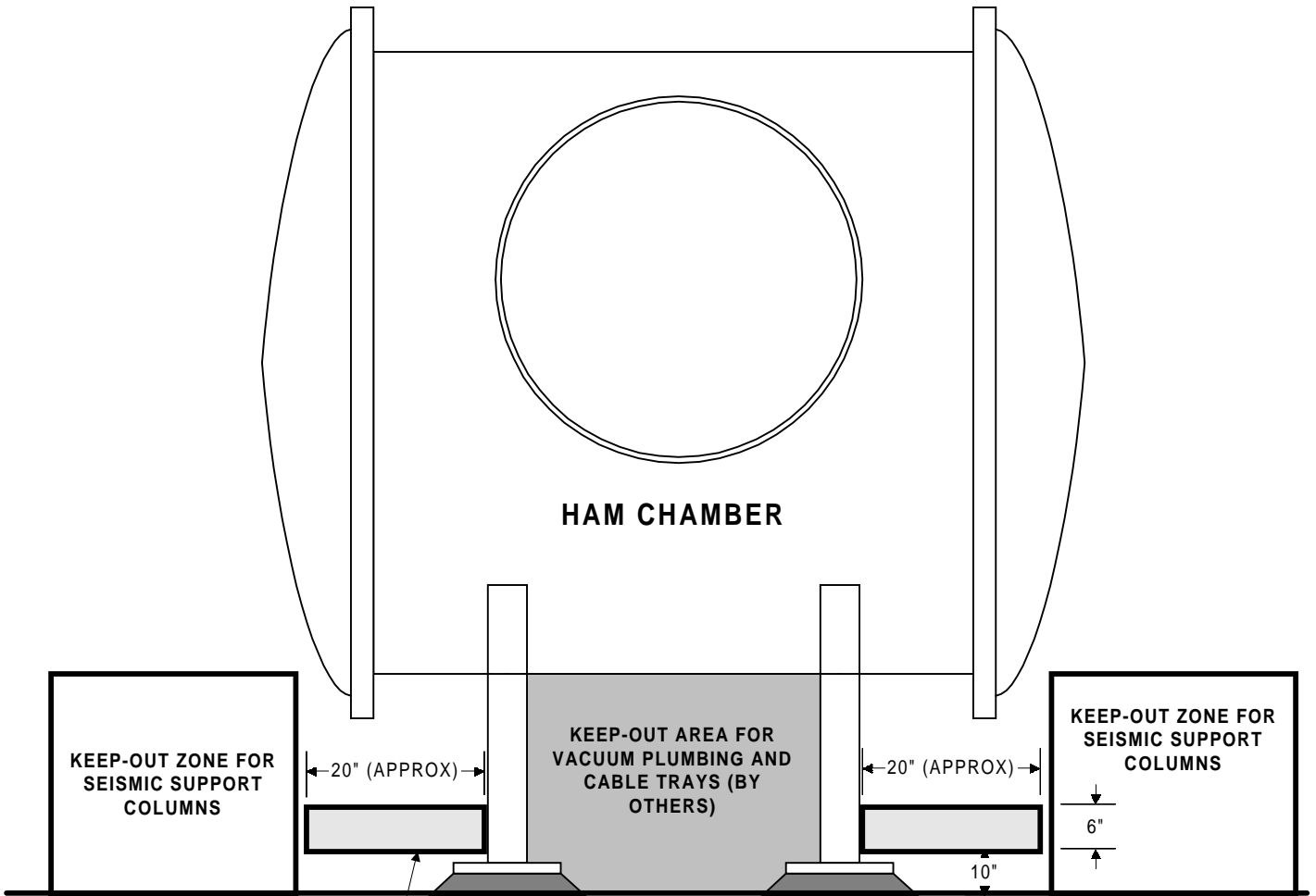


VIEW D1



VIEW D2

| | | | | | | | | | | | | | | | | | | | | | |
|--|--|---------------------------|--|----------|--|-------------|--|------------|--|------|--|------|--|-------|--|-----|--|-------|--|--|--|
| UNLESS OTHERWISE SPECIFIED DIMENSIONS ARE IN FEET (101) | | DO NOT SCALE THIS DRAWING | | 00 | | PRE-RELEASE | | | | | | | | | | | | | | LIGO CALIFORNIA INSTITUTE OF TECHNOLOGY MASSACHUSETTS INSTITUTE OF TECHNOLOGY | |
| TOLERANCES: FRACTIONAL # ANGULAR APPROX # BEND # TWO PLACE DECIMAL # THREE PLACE DECIMAL # FINISHED SURFACE INCH BREAK CORNERS BY REMOVE ALL BLANKS | | USED ON: | | REV | | DESCRIPTION | | DCN NUMBER | | DRWN | | DATE | | SCALE | | NTS | | SHEET | | D980266-00 | |
| DWG. NO. | | DESCRIPTION | | DWG. NO. | | DESCRIPTION | | DCN NUMBER | | DRWN | | DATE | | SCALE | | NTS | | SHEET | | 5 OF 21 | |
| 8 | | 7 | | 6 | | 5 | | 4 | | 3 | | 2 | | 1 | | | | | | | |



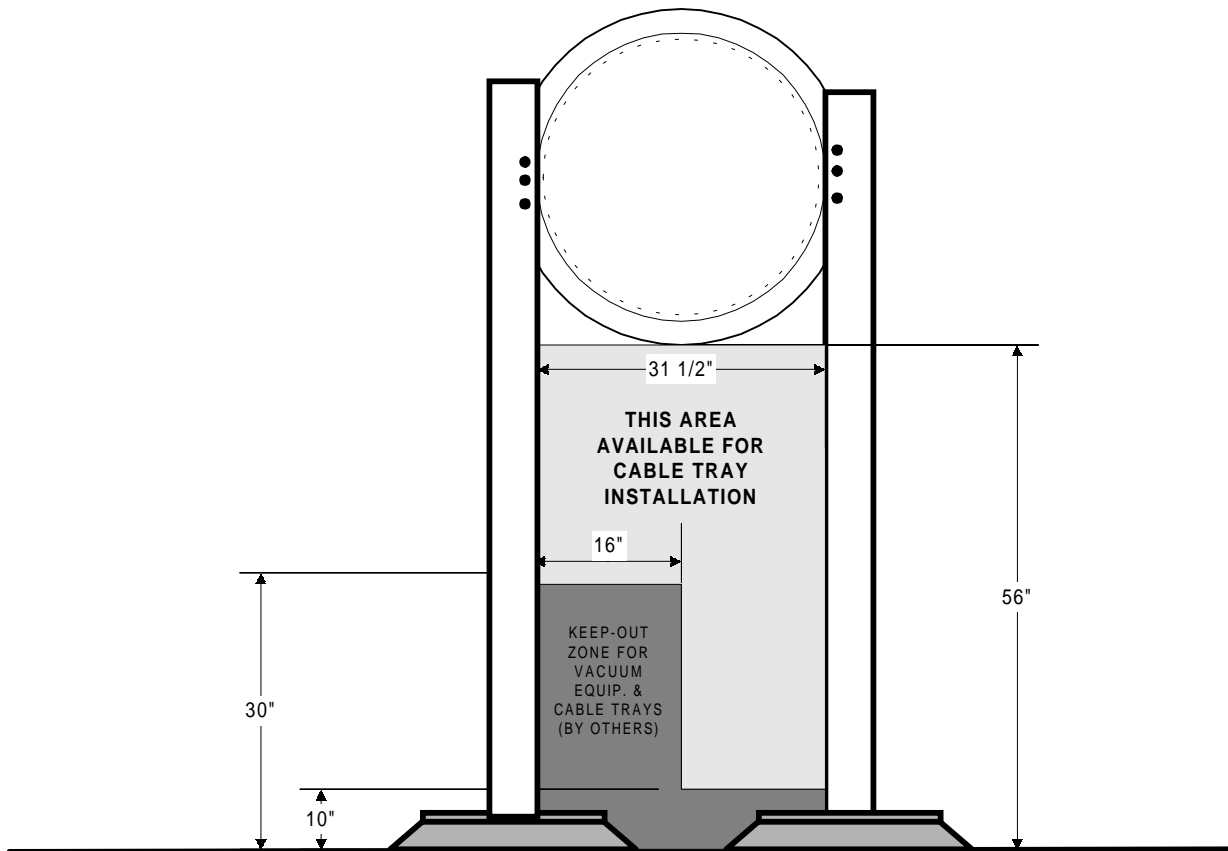
SECTION E - E
NOT TO SCALE

**NOTE: SEISMIC COLUMNS
MAY NOT BE INSTALLED
PRIOR TO CABLE TRAYS**

REMOVEABLE CABLE TRAYS MAY BE MOUNTED TO HAM LEGS BUT SHALL NOT CONTACT SEISMIC SUPPORT COLUMNS (BOTH SIDES)

INSTALLATION AREAS FOR CABLE TRAYS AROUND INPUT HAMS (HAMS 1, 2, 3, 7, 8, 9)

DRAWING D980266, SHEET 6

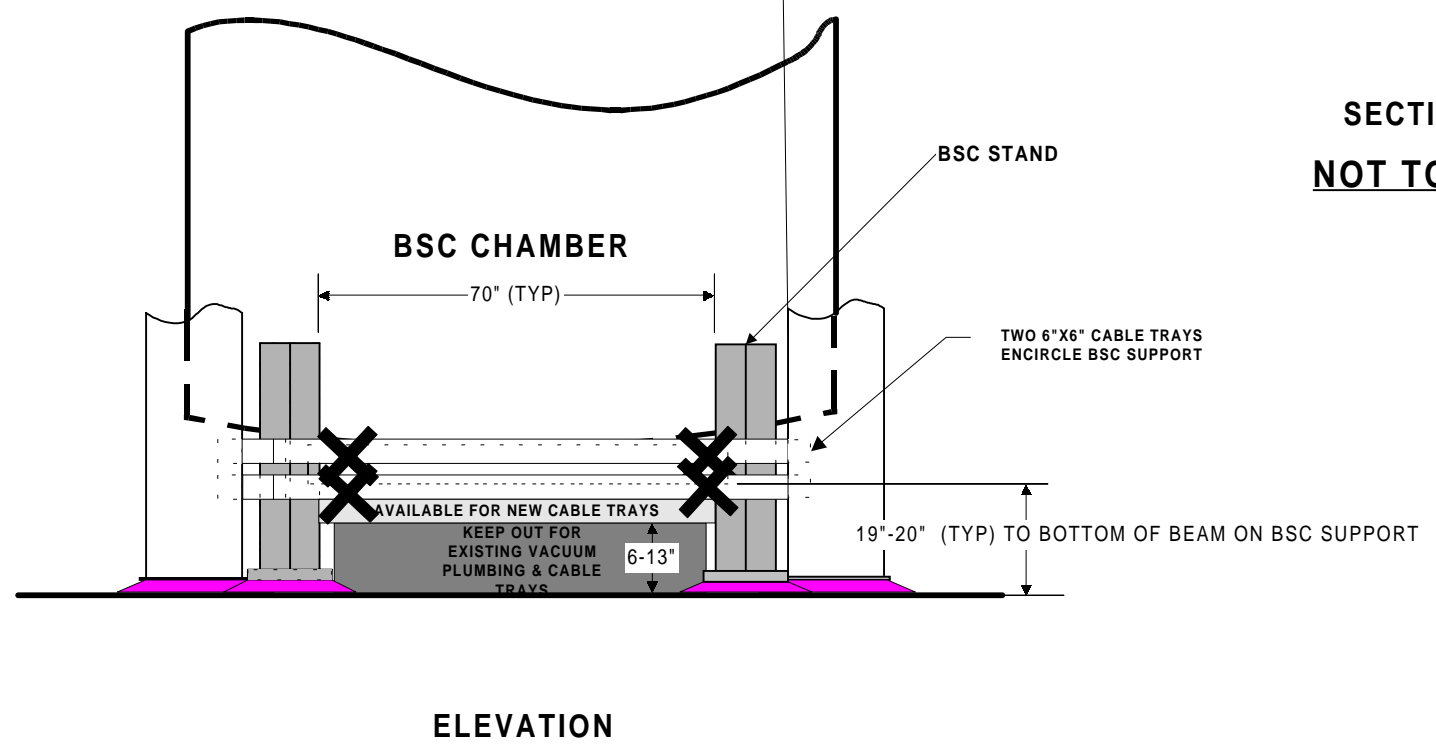
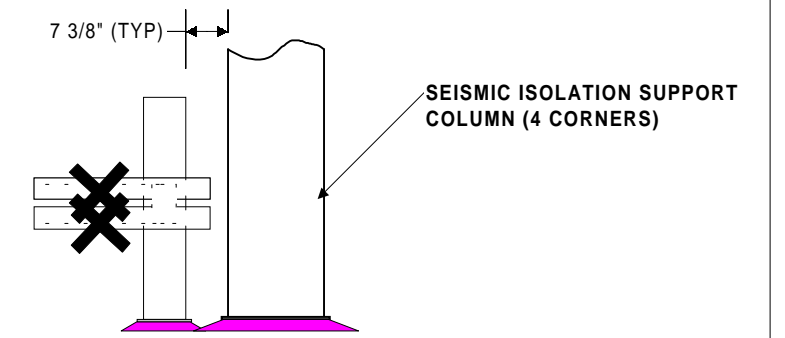
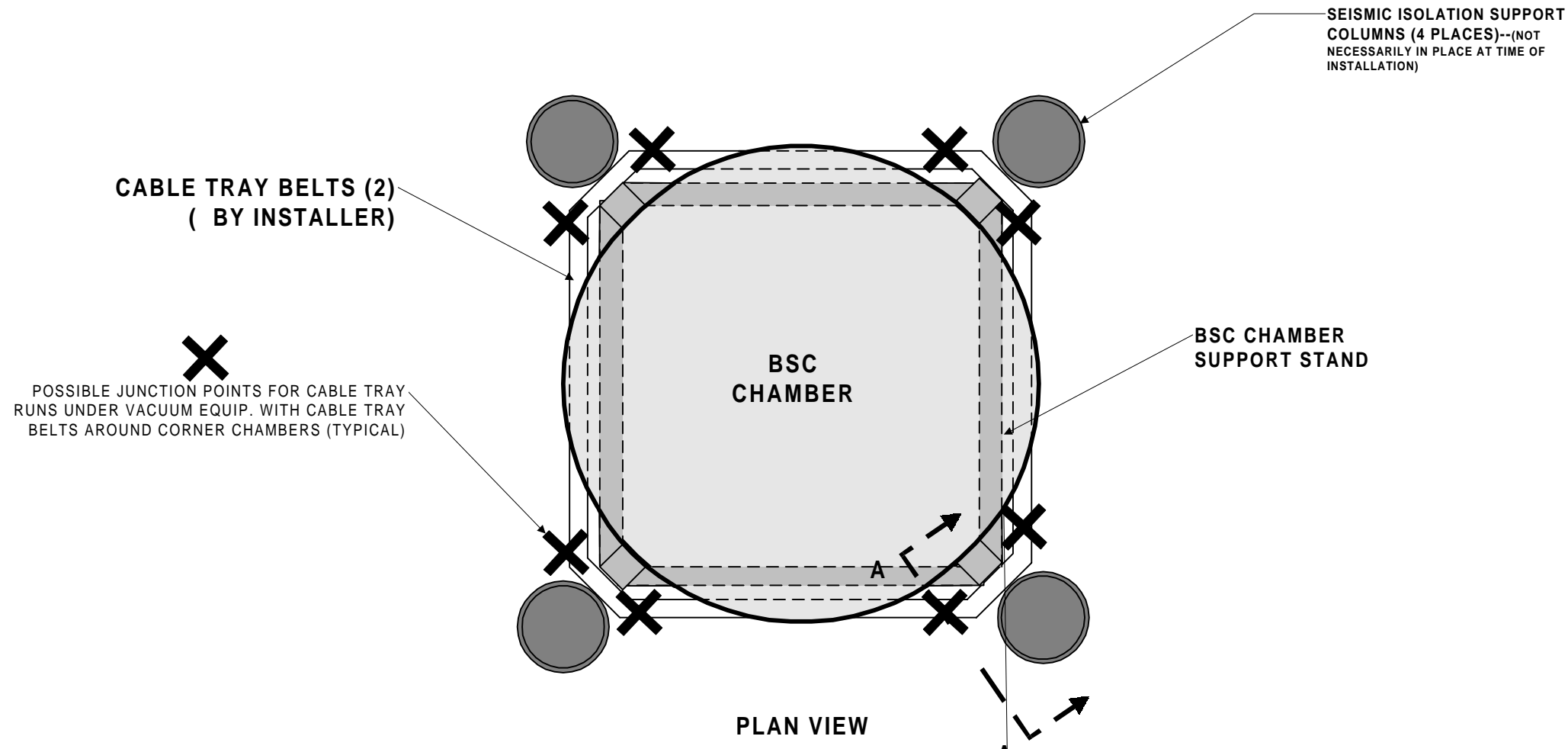


SECTION F-F
NOT TO SCALE

NOTE: CABLE TRAYS MAY BE ATTACHED TO VACUUM EQUIPMENT POSTS

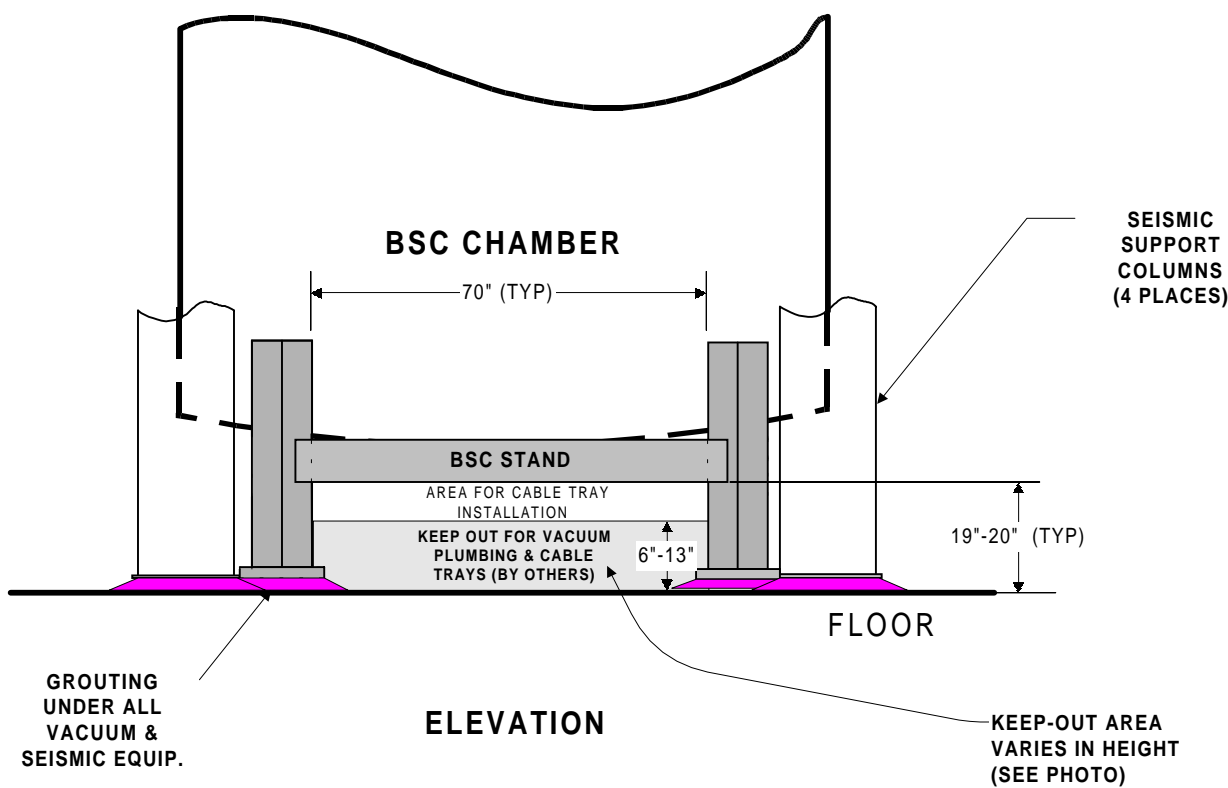
**MODE CLEANER AREA (X-ARM)
 LOOKING FROM LASER INPUT AREAS**

DRAWING D980266, SHEET 7



CABLE TRAY INSTALLATIONS FOR CORNER BSC CHAMBERS (BSCs 2, 4, 7, & 8)

DRAWING D980266, SHEET 8

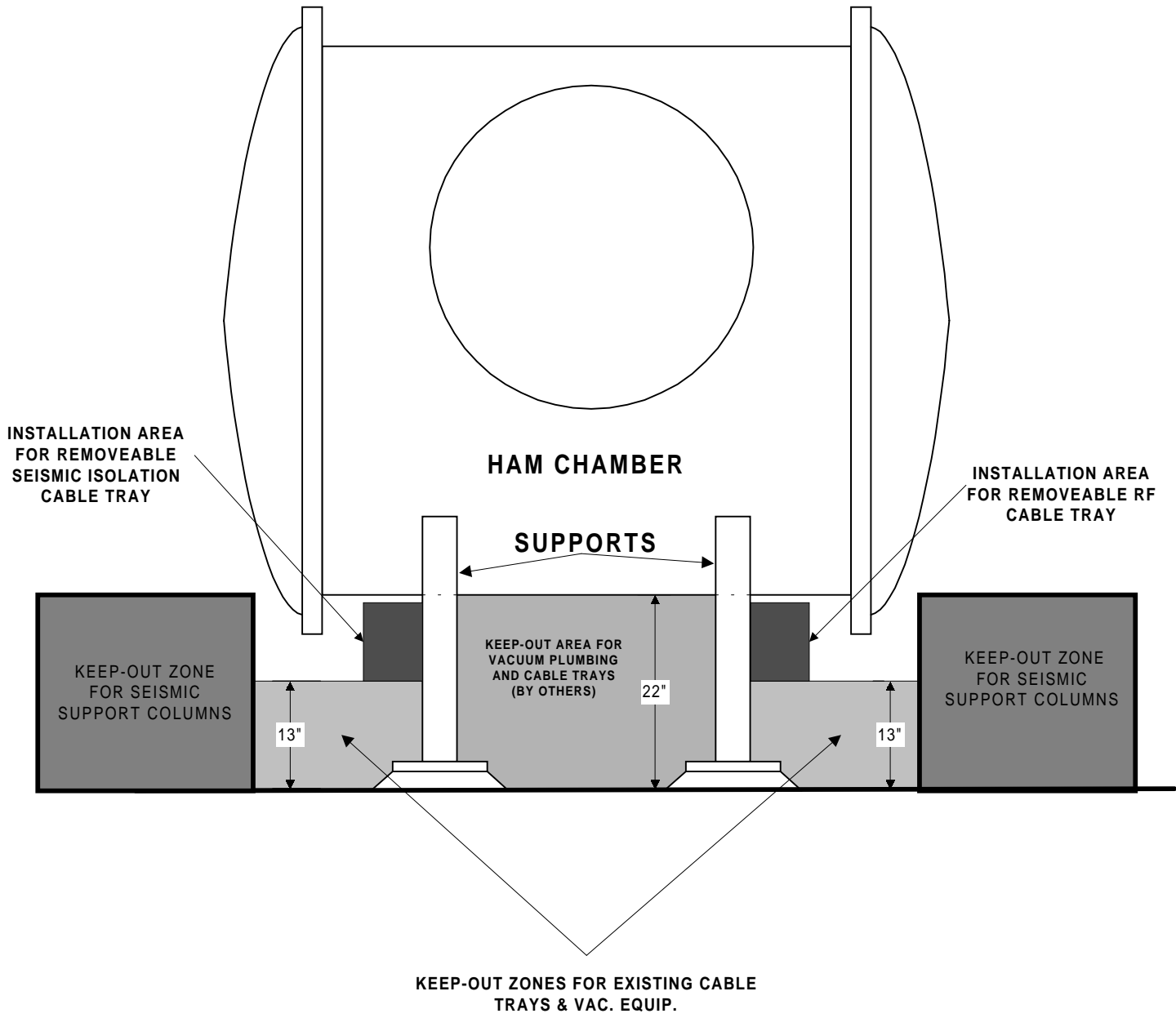


ELEVATION

SECTION I - I
NOT TO SCALE

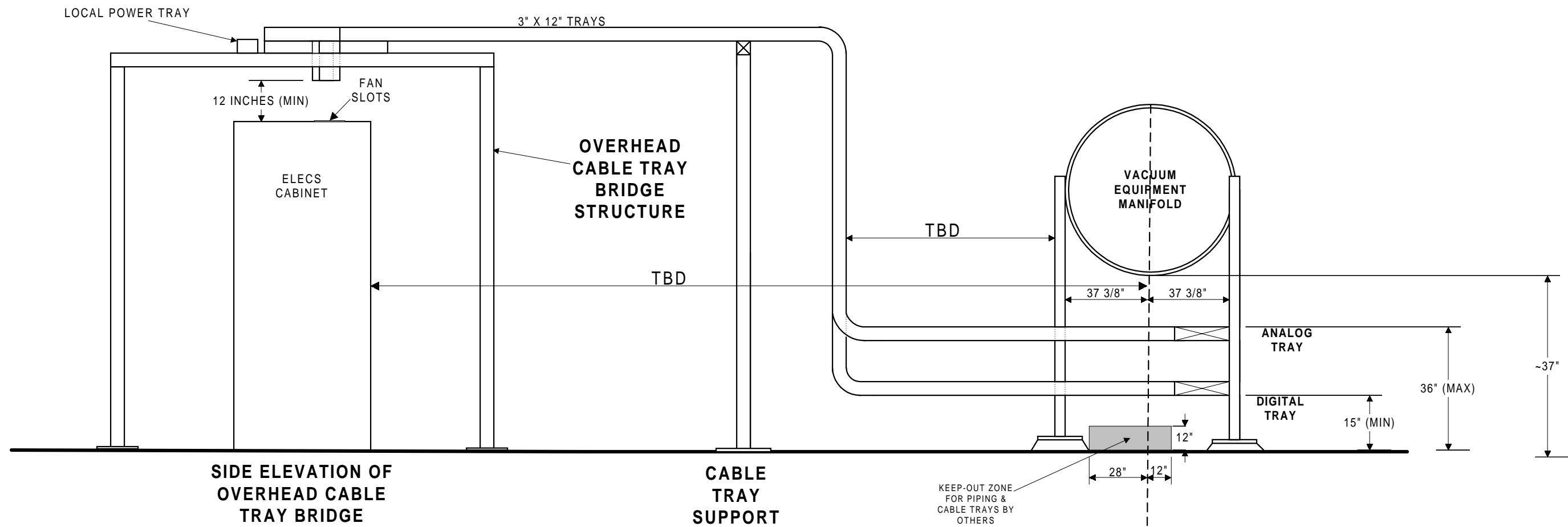
CABLE TRAY ROUTING UNDER BSCS 1 & 3

DRAWING D980266, SHEET 9



SECTION J-J
NOT TO SCALE

**INSTALLATION AREAS FOR CABLE TRAYS
 UNDER OUTPUT HAMS (HAMS 4 & 10)
 LOOKING TOWARDS VERTEX
 DRAWING D980266, SHEET 10**

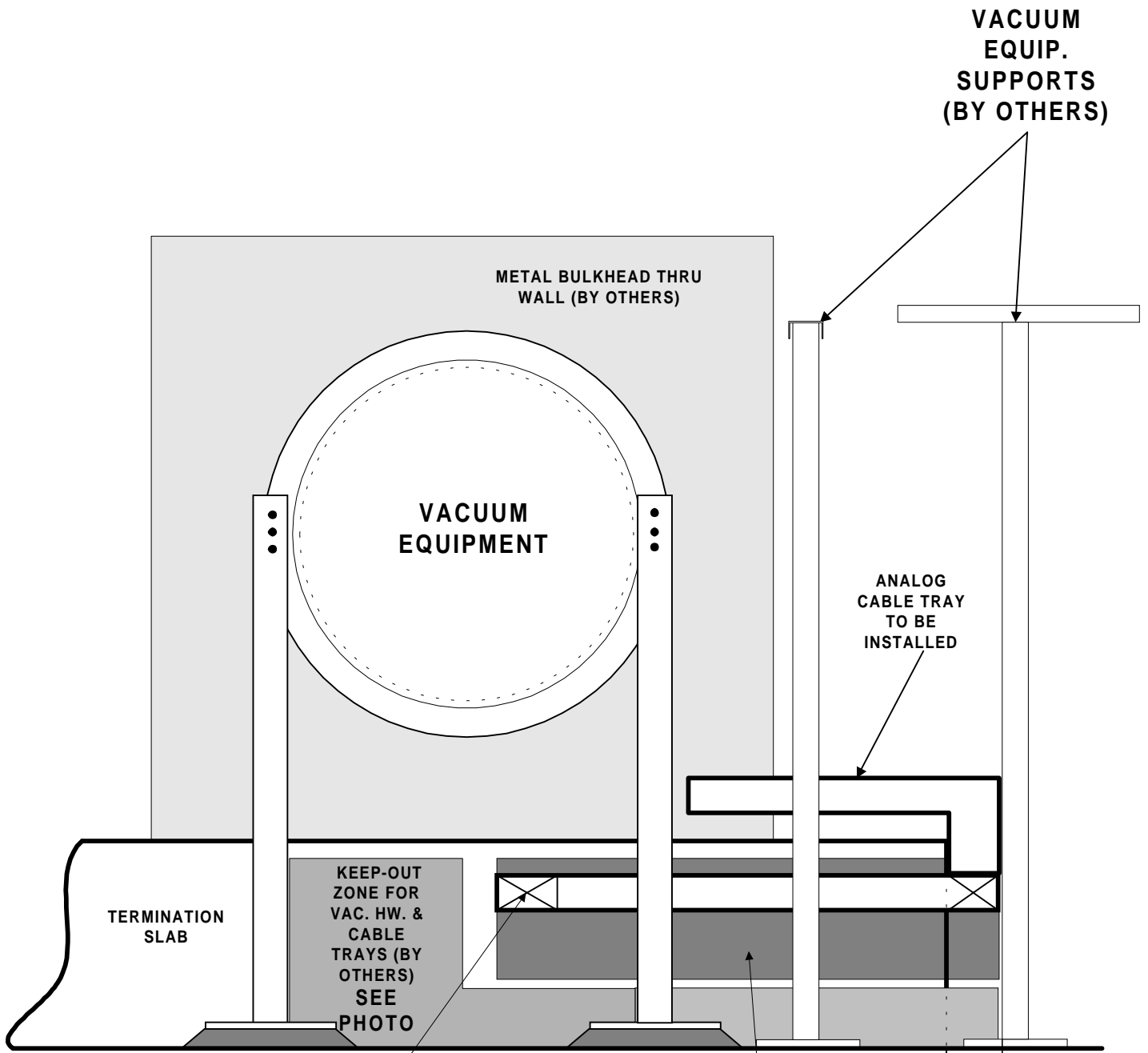


**SIDE ELEVATION OF
OVERHEAD CABLE
TRAY BRIDGE**

**CABLE
TRAY
SUPPORT**

SECTION G-G
NOT TO SCALE

CABLE TRAY INSTALLATIONS NEAR VACUUM MANIFOLDS
VIEW SHOWN: X-ARM LOOKING TOWARDS END STATION
DRAWING D980266, SHEET 11



FLOOR

ELEVATION

9" (TYP)
BETWEEN EDGE OF
TERMINATION SLAB &
VACUUM PLUMBING
STANDS (BY OTHERS)

ANALOG
CABLE
TRAY RUN
FROM
MANIFOLD

THIS AREA AVAILABLE
FOR CABLE TRAY
INSTALLATION

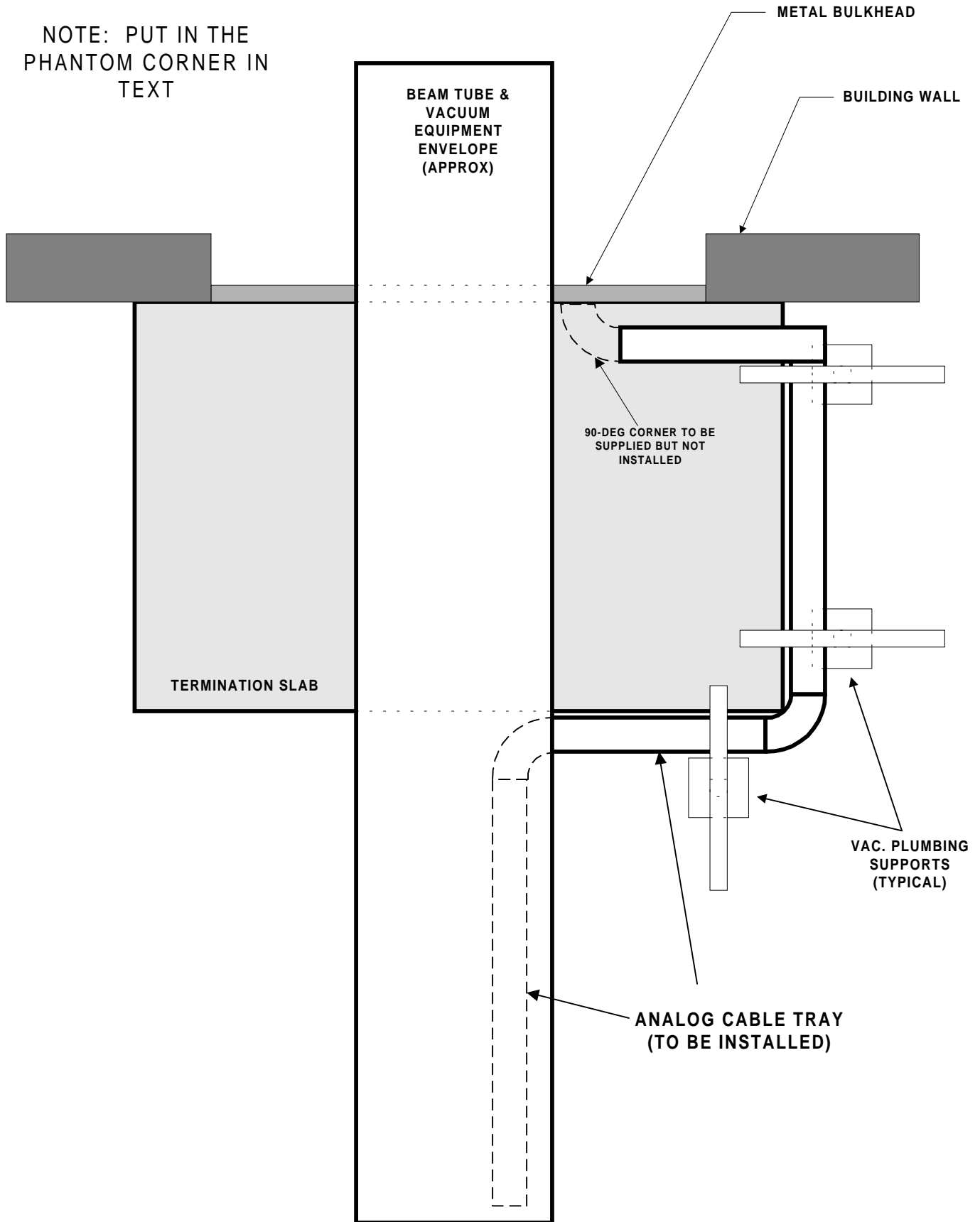
SECTION L-L
NOT TO SCALE

NOTE: FOR PLAN VIEW OF
THIS AREA SEE D980266,
SHEET 13

X ARM TERMINATION SLAB

DRAWING D980266, SHEET 12

NOTE: PUT IN THE
PHANTOM CORNER IN
TEXT



NOT TO SCALE

**X-ARM TERMINATION SLAB,
PLAN VIEW**

DRAWING D980266, SHEET 13

VACUUM
EQUIP.
SUPPORTS
(BY
OTHERS)

METAL BULKHEAD THRU
WALL (BY OTHERS)

VACUUM
EQUIPMENT

ANALOG
CABLE TRAY
TO BE
INSTALLED

KEEP-OUT
ZONE FOR
VAC. HW. &
CABLE
TRAYS (BY
OTHERS)
SEE
PHOTO

TERMINATION
SLAB

9" (TYP)

BETWEEN EDGE OF
TERMINATION SLAB &
VACUUM PLUMBING
STANDS (BY OTHERS)

ELEVATION

ANALOG
CABLE
TRAY RUN
FROM
MANIFOLD

FLOOR

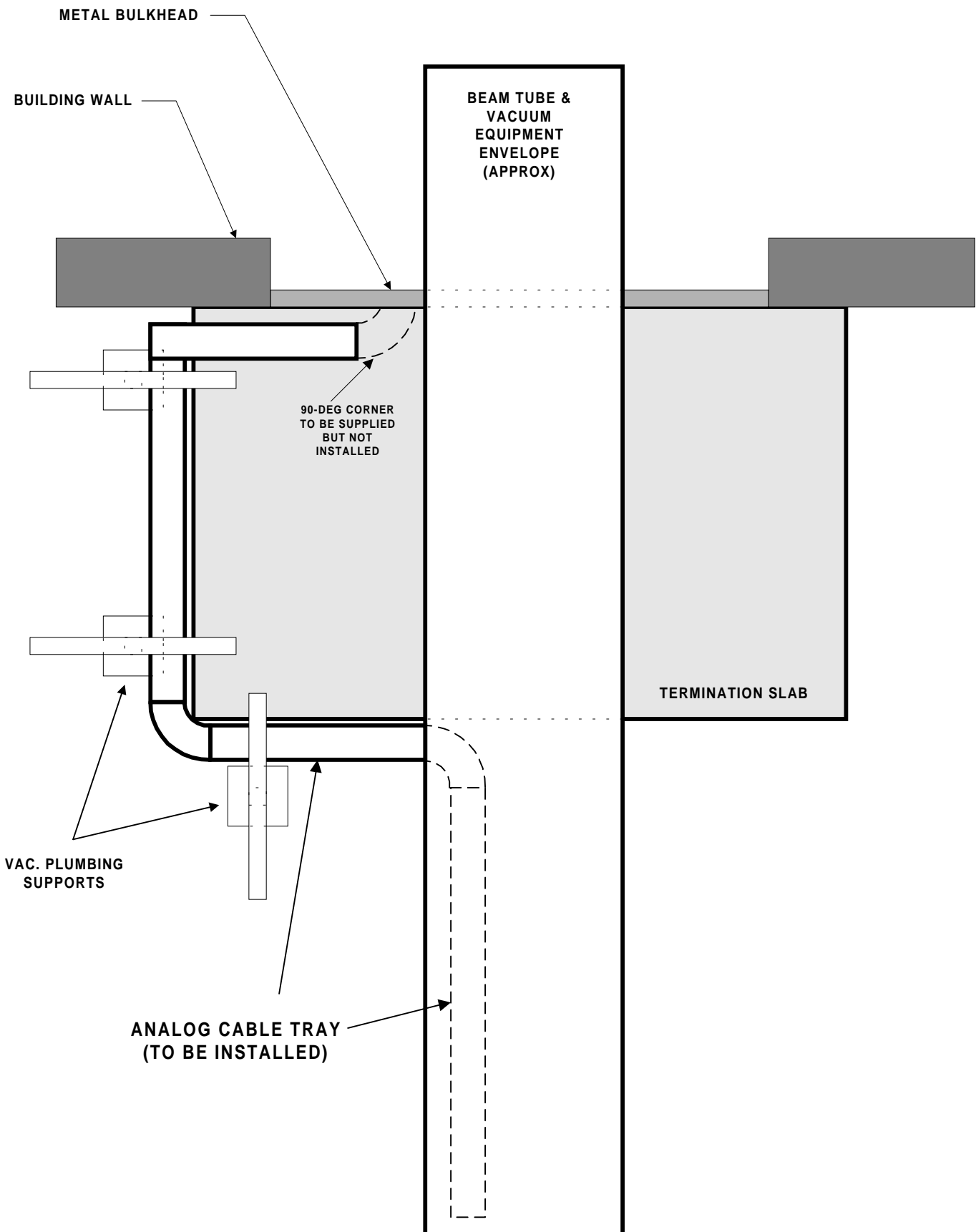
THIS AREA AVAILABLE
FOR CABLE TRAY
INSTALLATION

SECTION M-M
NOT TO SCALE

Y-ARM TERMINATION SLAB,
ELEVATION

DRAWING D980266, SHEET 14

Z:-visio/yterm slab.vsd

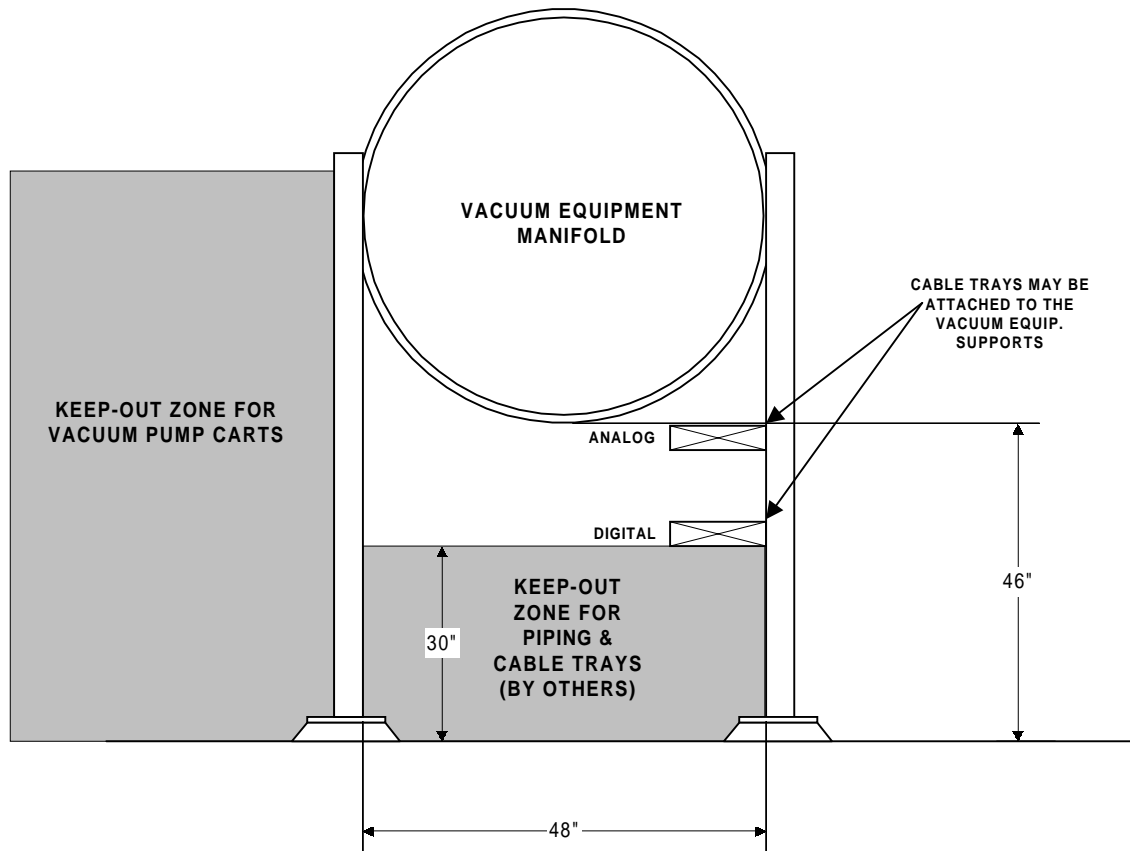


NOT TO SCALE

Y-ARM TERMINATION SLAB , PLAN VIEW

DRAWING D980266, SHEET 15

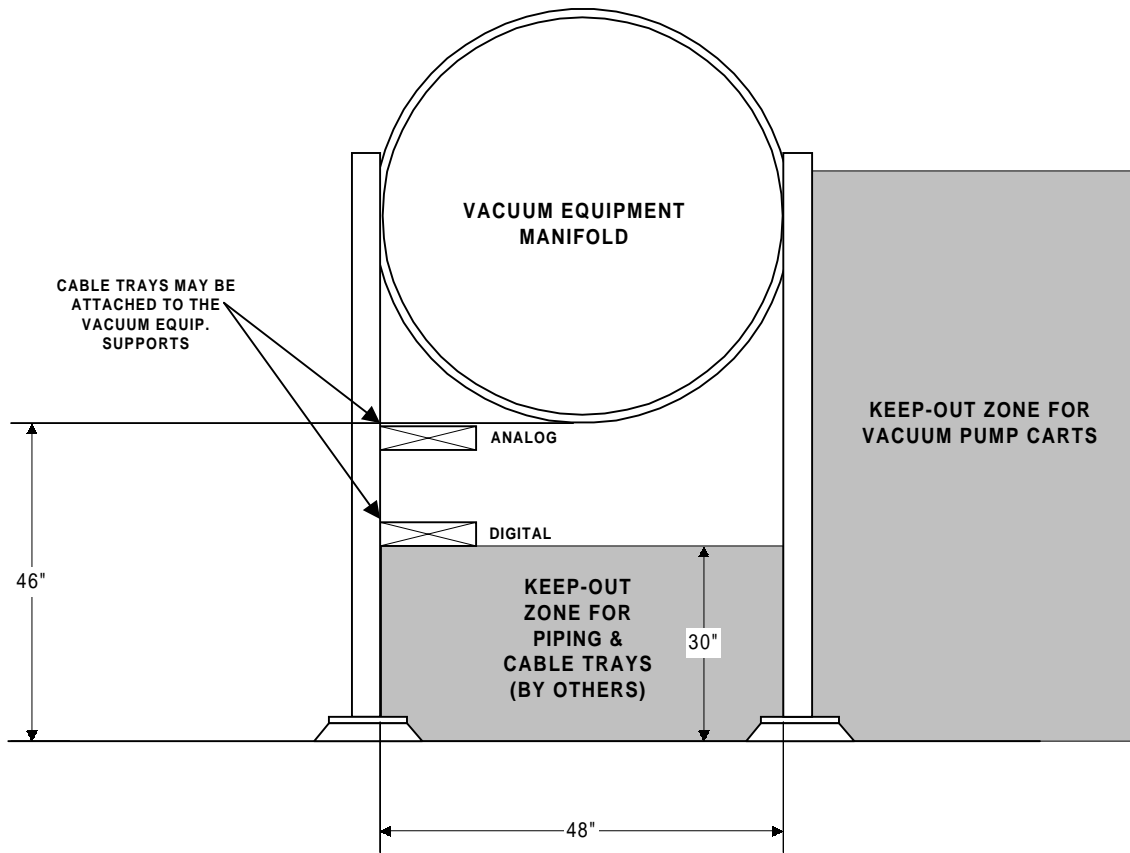
Z:-visio/ytermplanslab.vsd



SECTION N - N
NOT TO SCALE

DIAGONAL BEAM MANIFOLD (X-ARM)
LOOKING FROM BSC 4 TOWARDS BSC 7

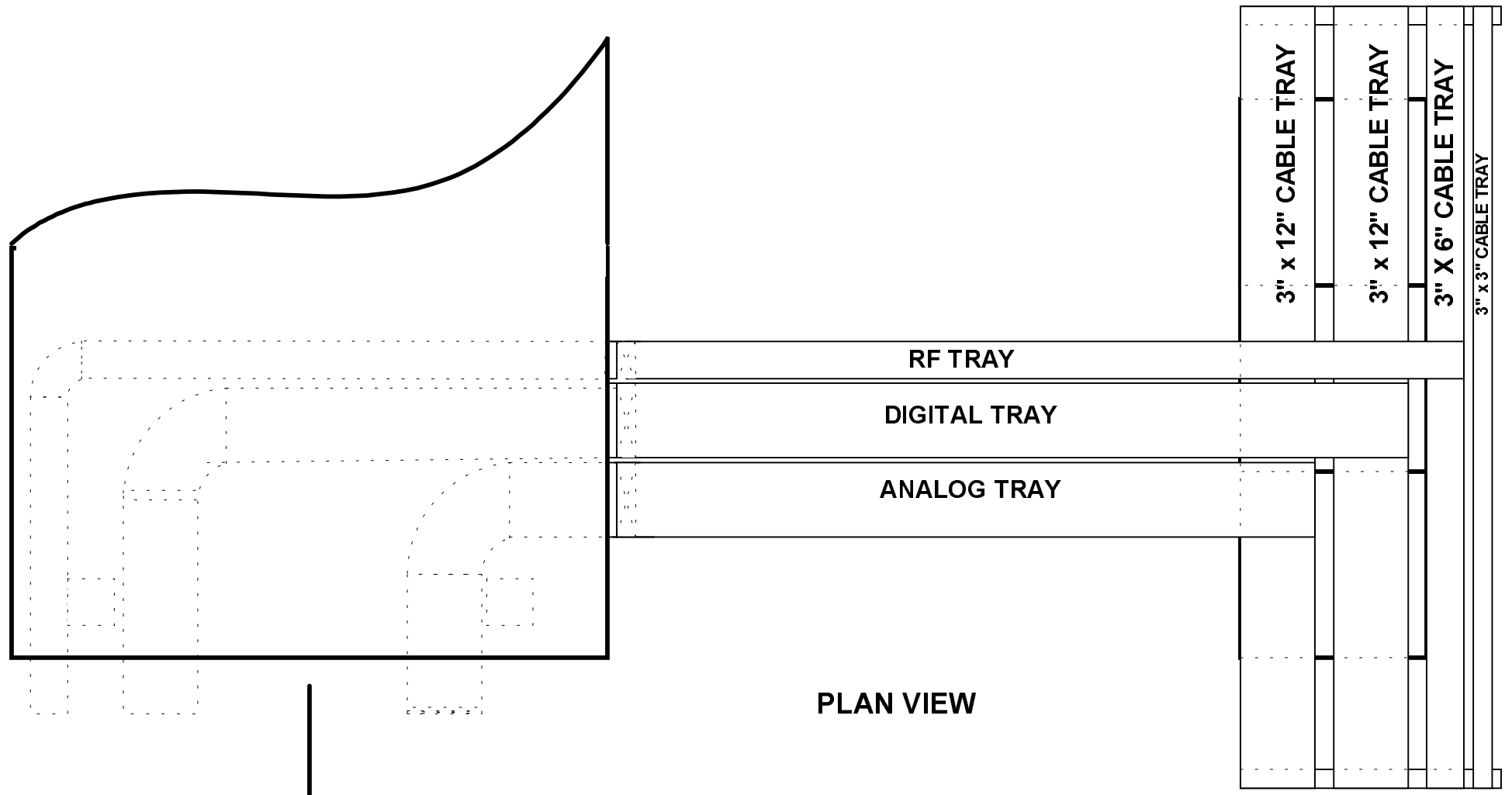
DRAWING D980266, SHEET 16



SECTION O - O
NOT TO SCALE

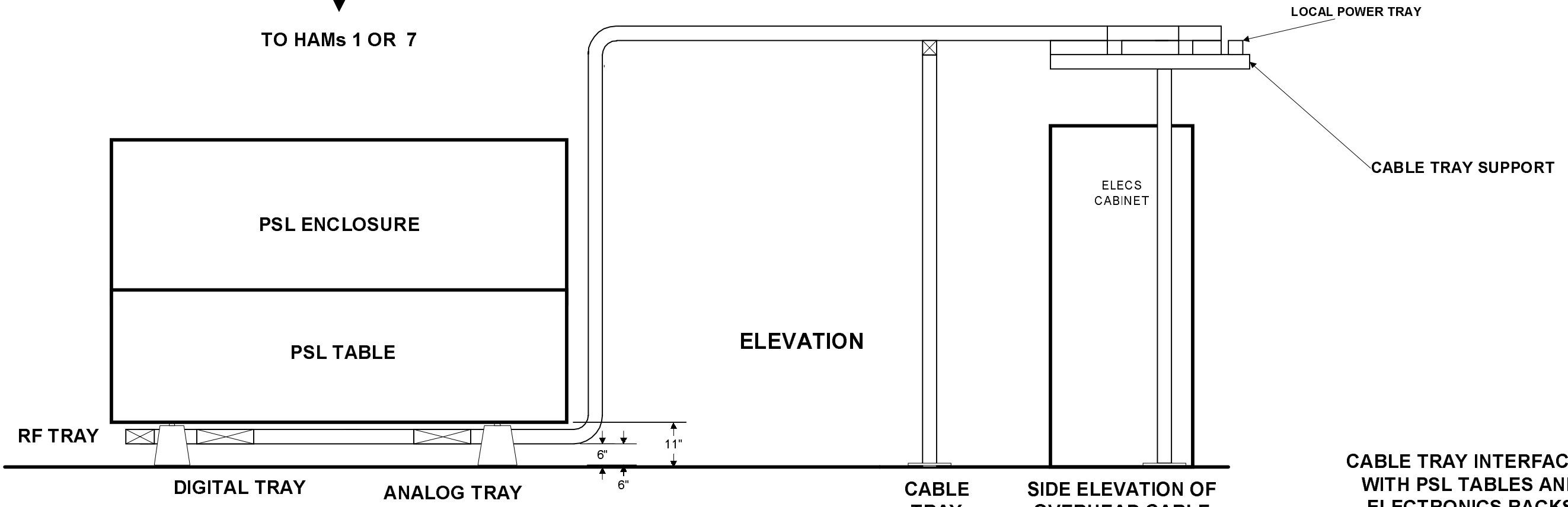
DIAGONAL BEAM MANIFOLD (Y-ARM)
LOOKING FROM BSC4 TOWARDS BSC 8

DRAWING D980266, SHEET 17



PLAN VIEW

TO HAMs 1 OR 7



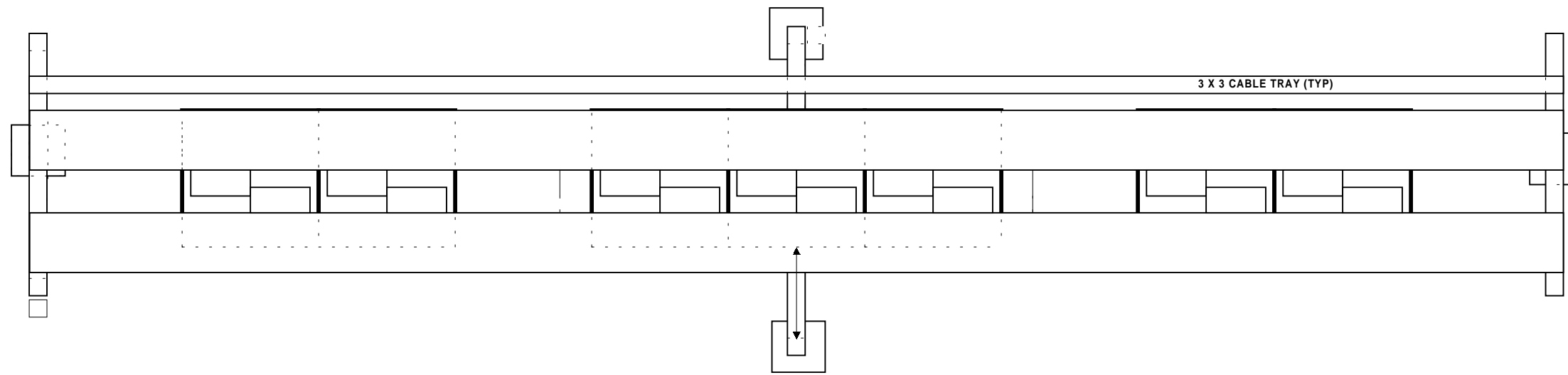
ELEVATION

NOT TO SCALE

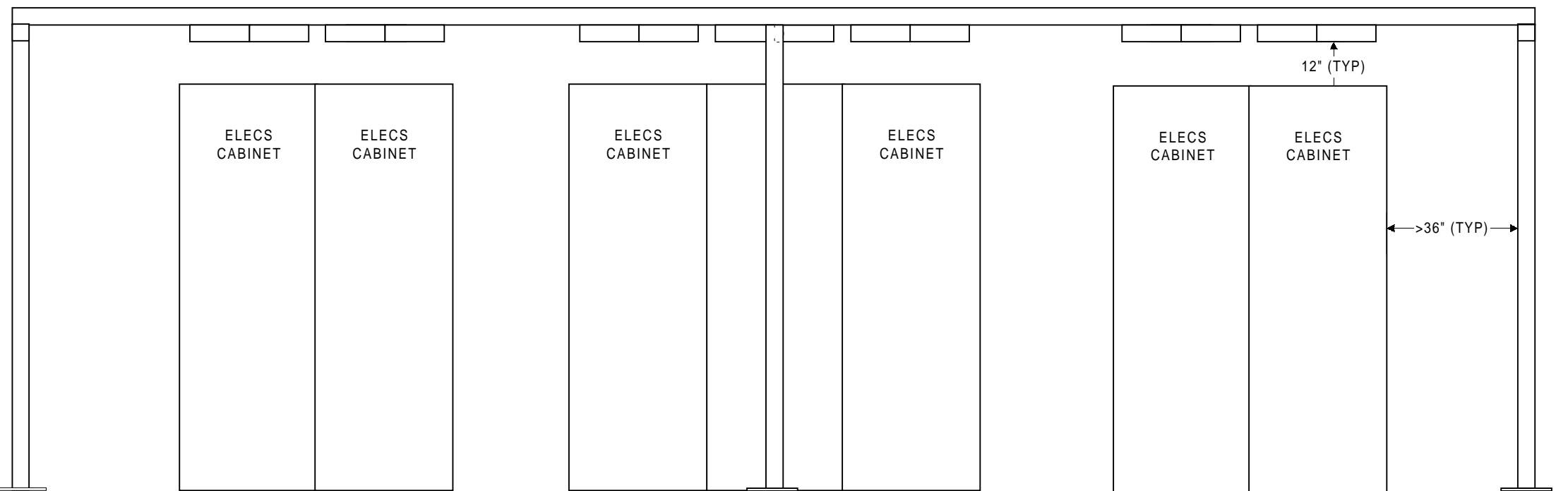
CABLE TRAY SUPPORT

SIDE ELEVATION OF OVERHEAD CABLE TRAY BRIDGE

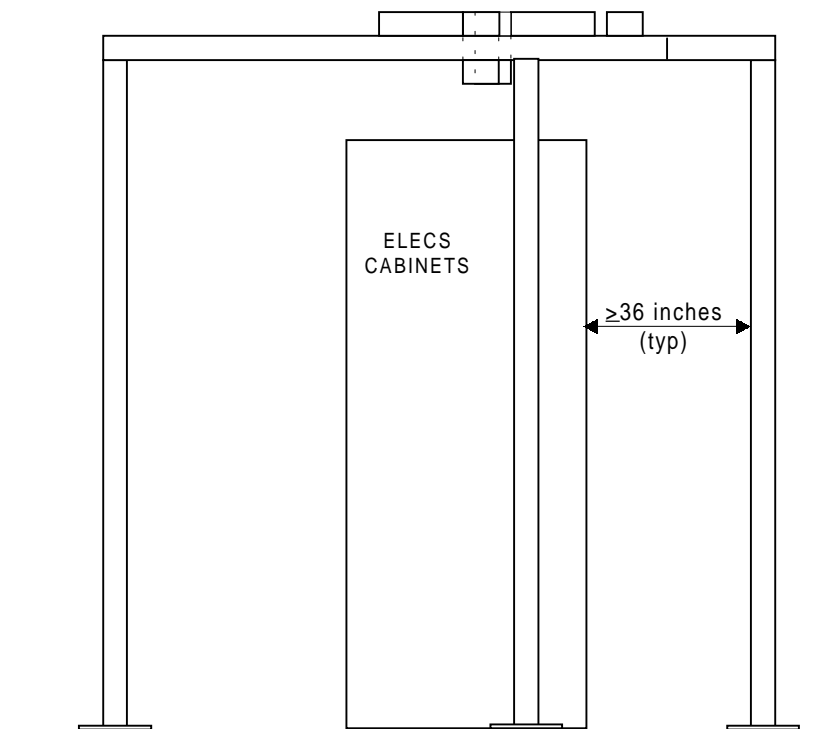
CABLE TRAY INTERFACES WITH PSL TABLES AND ELECTRONICS RACKS
DRAWING D980266, SHEET 18



PLAN VIEW



FRONT ELEVATION

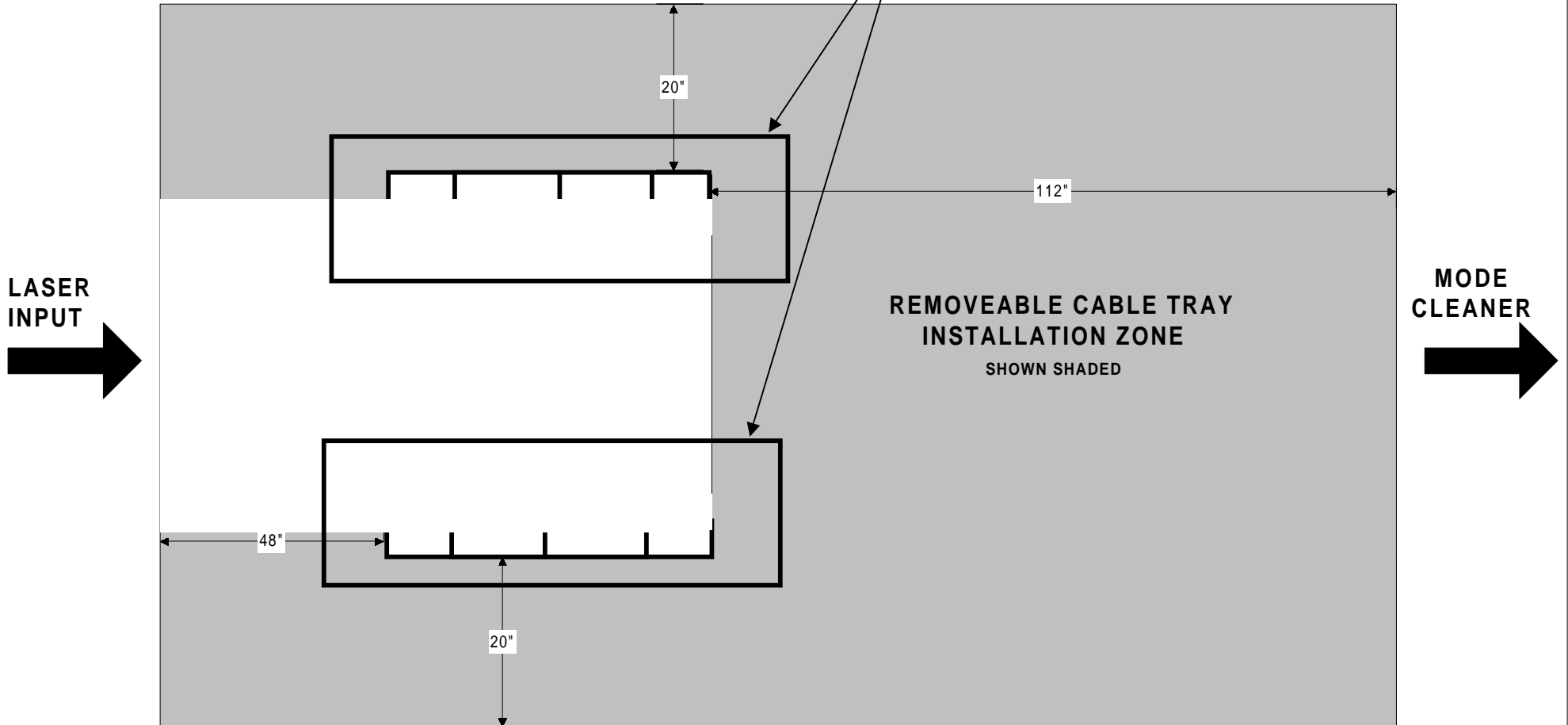


SIDE ELEVATION



NOTE: SEE SECTION E-E
(PHOTO E20) FOR ELEVATION
PHOTO OF A TYPICAL INPUT HAM
SUPPORT AREA

HAM SUPPORT
FOOTPRINT
SEE NOTE ABOVE



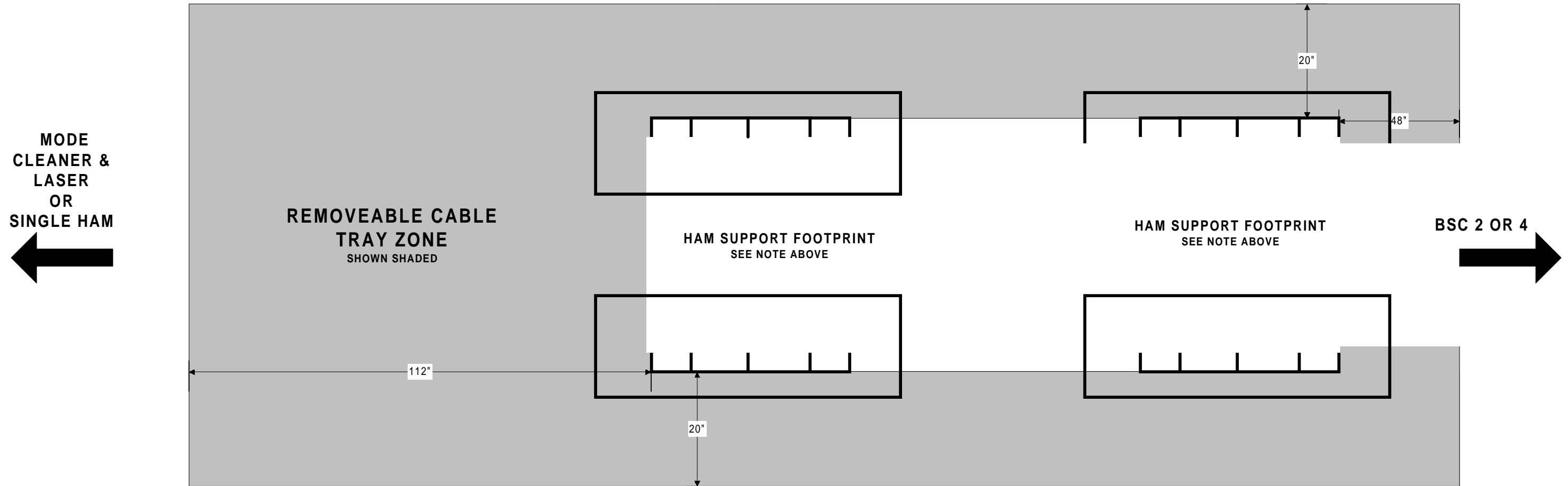
PLAN VIEW

NOT TO SCALE

REMOVEABLE CABLE TRAY ZONE
AROUND INPUT HAMS

DRAWING D980266, SHEET 20
Z:~visio/drawings/inhamfutprint.vsd

NOTE: SEE SECTION E-E
(PHOTO E20) FOR ELEVATION
PHOTO OF A TYPICAL INPUT HAM
SUPPORT AREA



PLAN VIEW

NOT TO SCALE

**REMOVEABLE CABLE TRAY
ZONE AROUND DUAL HAM
INSTALLATIONS**

DRAWING D980262, SHEET 21