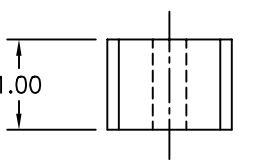
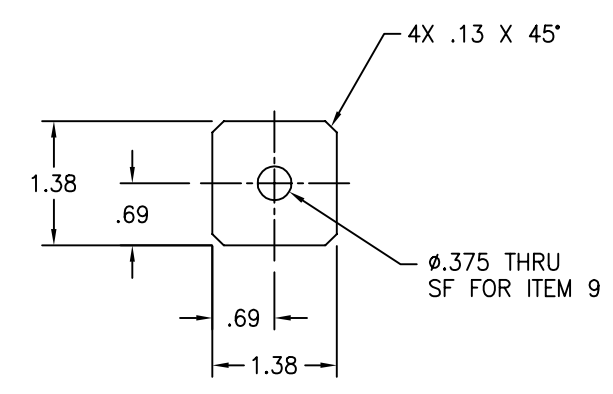
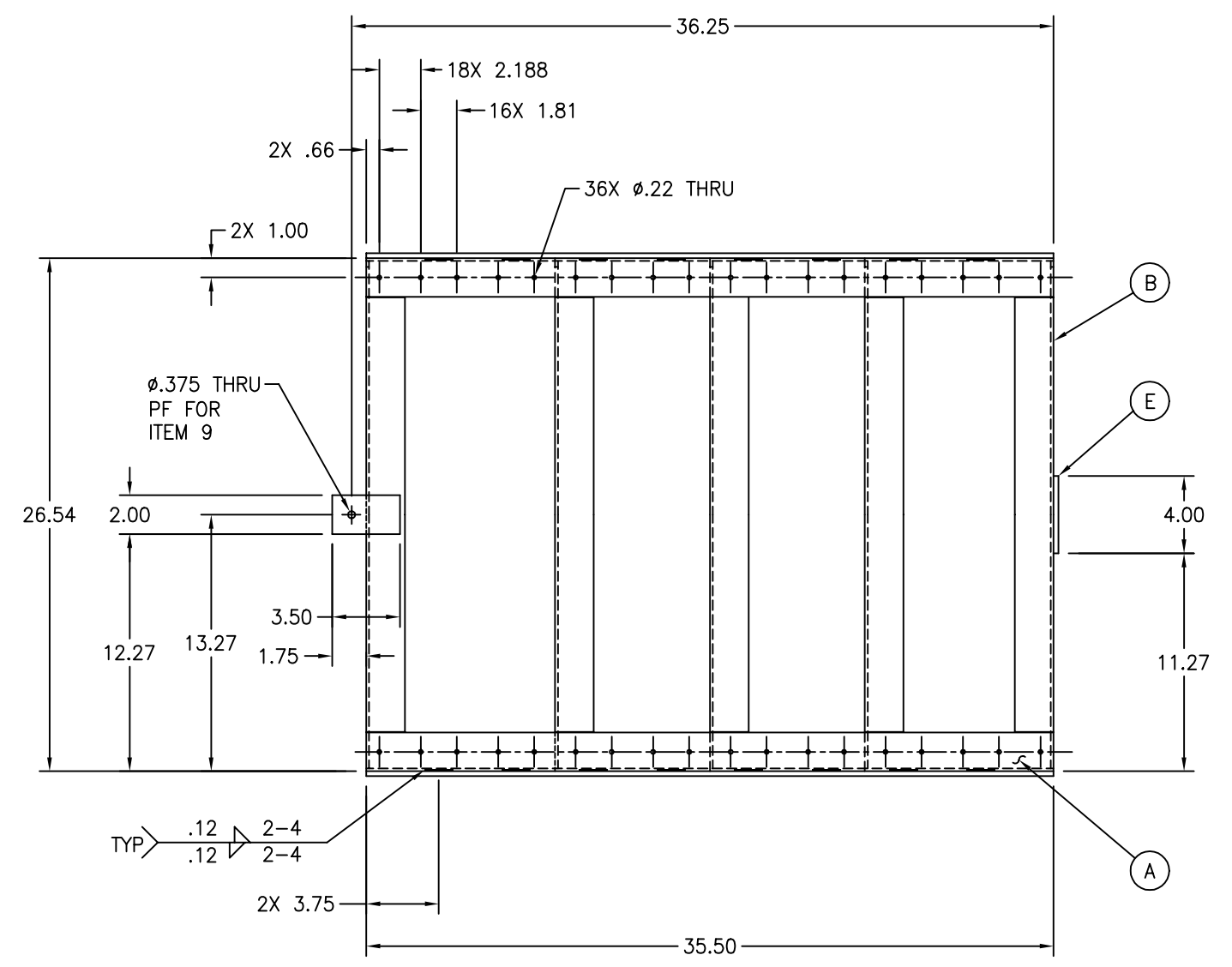


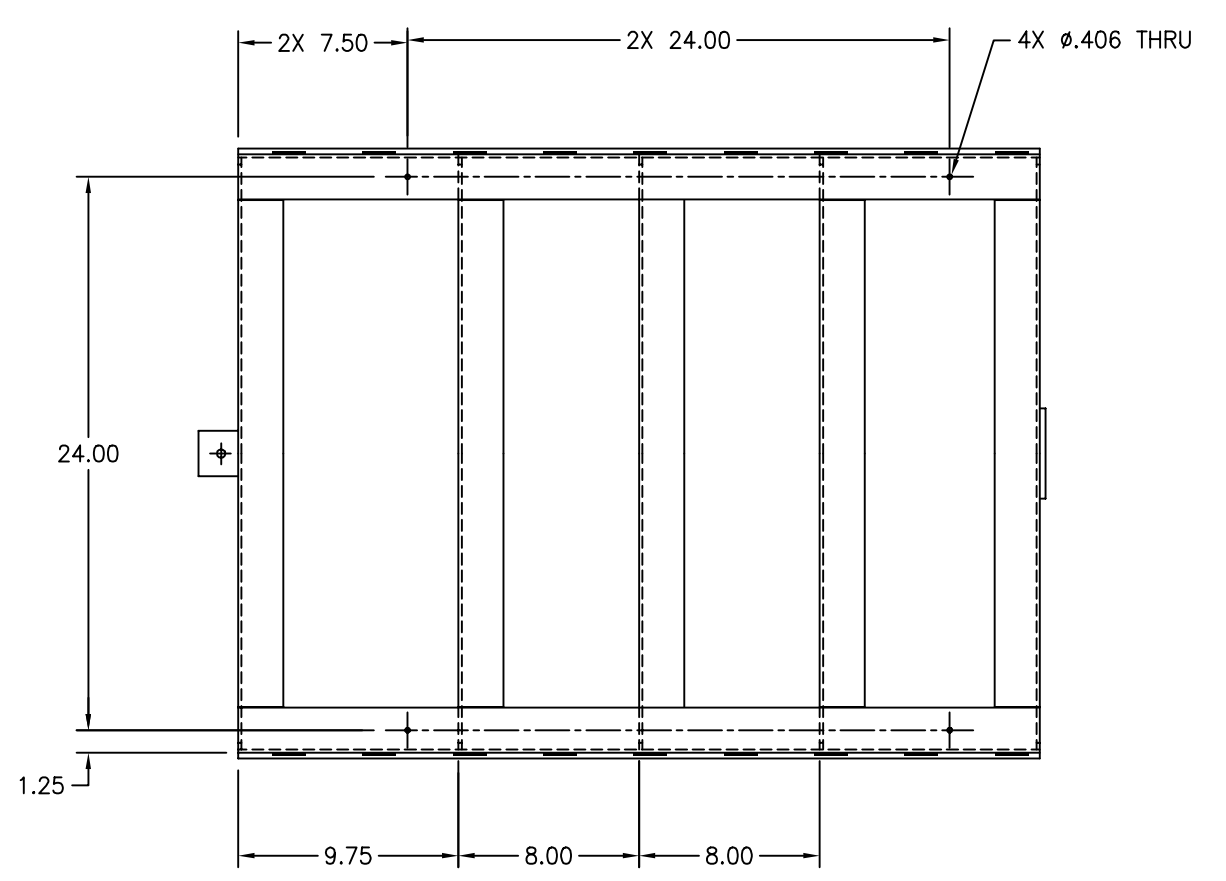
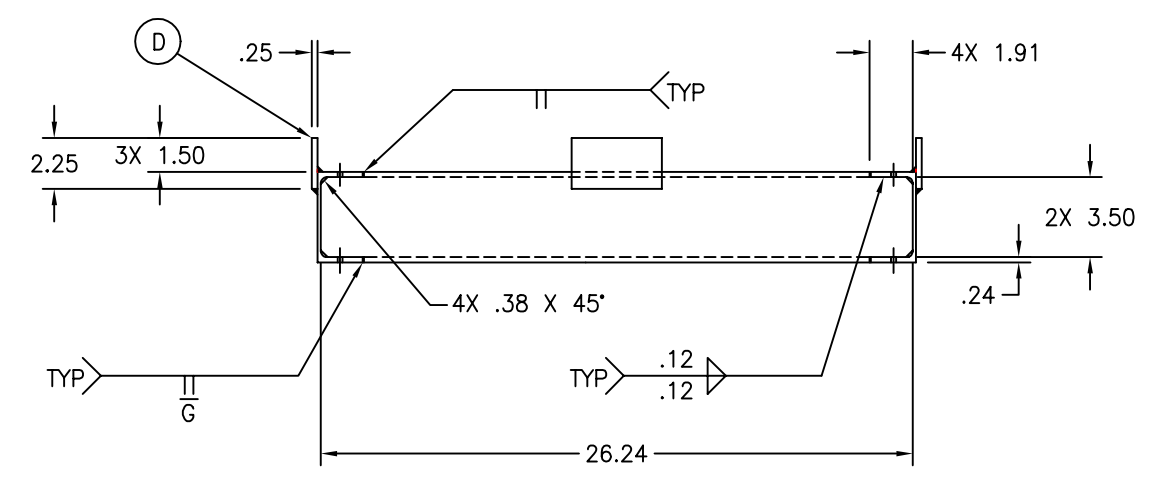
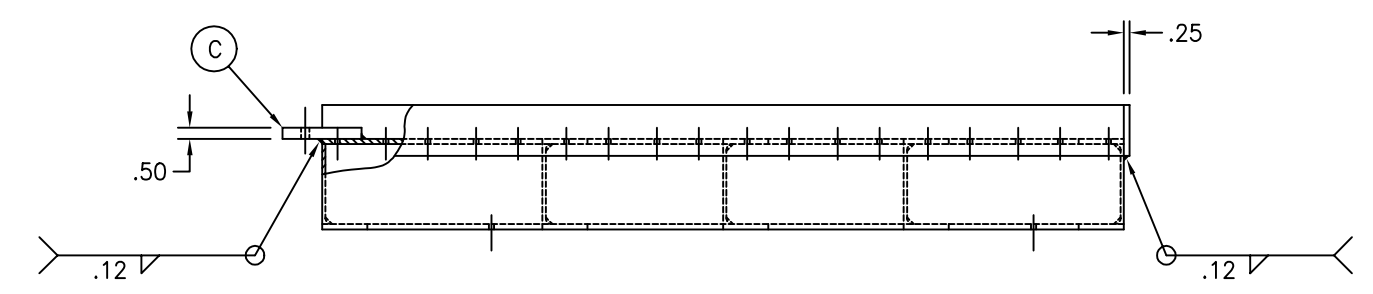
ALTER	PART OR IDENTIFYING NO	NOMENCLATURE OR DESCRIPTION	MATERIAL SPECIFICATION	ITEM NO
1	RF64	LIFT	REGAL	10
1		DOWEL Ø.375 X 1.00 LG	SST	9
36		NUT #10-24 UNC-2B	SST	8
4		NUT .375-16 UNC-2B	SST	7
36		SOC HD CAP SCR #10-24 UNC-2A X .75 LG	SST	6
4		SOC HD CAP SCR .375-16 UNC-2A X 2.00 LG	SST	5
18	5674K13	BALL TRANSFERS	McMASTER-CARR	4
1		BLOCK	ALUM 6061-T6	3
1		FRAME	WELDMENT	2
1		ASSEMBLY		1

DWG. NO.	DESCRIPTION	DWG. NO.	DESCRIPTION	REV	DESCRIPTION	DCN NUMBER	DRWN	DATE	SCALE	SHEET
					INITIAL RELEASE	D980084	KABDT	4-22-98	1/2	1
					PRE-RELEASE		CDI-LS	03-03-98		
					USED ON					
					NEXT ASS'Y					

**LIGO** CALIFORNIA INSTITUTE OF TECHNOLOGY  
 MASSACHUSETTS INSTITUTE OF TECHNOLOGY  
**LIFT TRUCK**  
 CAB FILE 9803-01-A.dwg  
 SHEET 1 OF 2  
 D980003-A



③ MATL: ALUM 6061-T6  
SCALE 1:1



LTR	DESCRIPTION	QTY
A	CHANNEL 4 X 2 (1.74#) MATERIAL: ALUM 6061-T6	2
B	CHANNEL 4 X 2 MATERIAL: ALUM 6061-T6	5
C	PLATE .50 THK MATERIAL: ALUM 6061-T6	1
D	PLATE .25 THK MATERIAL: ALUM 6061-T6	2
E	PLATE .25 THK MATERIAL: ALUM 6061-T6	1

UNLESS OTHERWISE SPECIFIED				LIGO CALIFORNIA INSTITUTE OF TECHNOLOGY MASSACHUSETTS INSTITUTE OF TECHNOLOGY			
DIMENSIONS ARE IN INCHES				LIFT TRUCK			
TOLERANCES				9803-02-A.dwg			
ANGLES 90°				E			
ONE PLACE DECIMAL & .050				D980003-A			
TWO PLACE DECIMAL & .010				4-22-98			
THREE PLACE DECIMAL & .005				KABDT			
FINISHED SURFACE RND .125				CDI-LS			
EDGE BREAMS AND FILLET RND .030				03-03-98			
REMOVE ALL BURRS				DRVN			
DO NOT SCALE THIS DRAWING				DATE			
USED ON				SCALE 1:1			
NEXT ASS'Y				SHEET 2			
REV		DESCRIPTION		ISSUE DESCRIPTION		DATE	
A		INITIAL RELEASE		D980004		-	
00		PRE-RELEASE		-		-	
REV		DESCRIPTION		DCN NUMBER		-	