

8 7 6 5 4 3 2 1

| REVISIONS |             |      |          |
|-----------|-------------|------|----------|
| REV.      | DESCRIPTION | DATE | APPROVED |
|           |             |      |          |
|           |             |      |          |
|           |             |      |          |

D

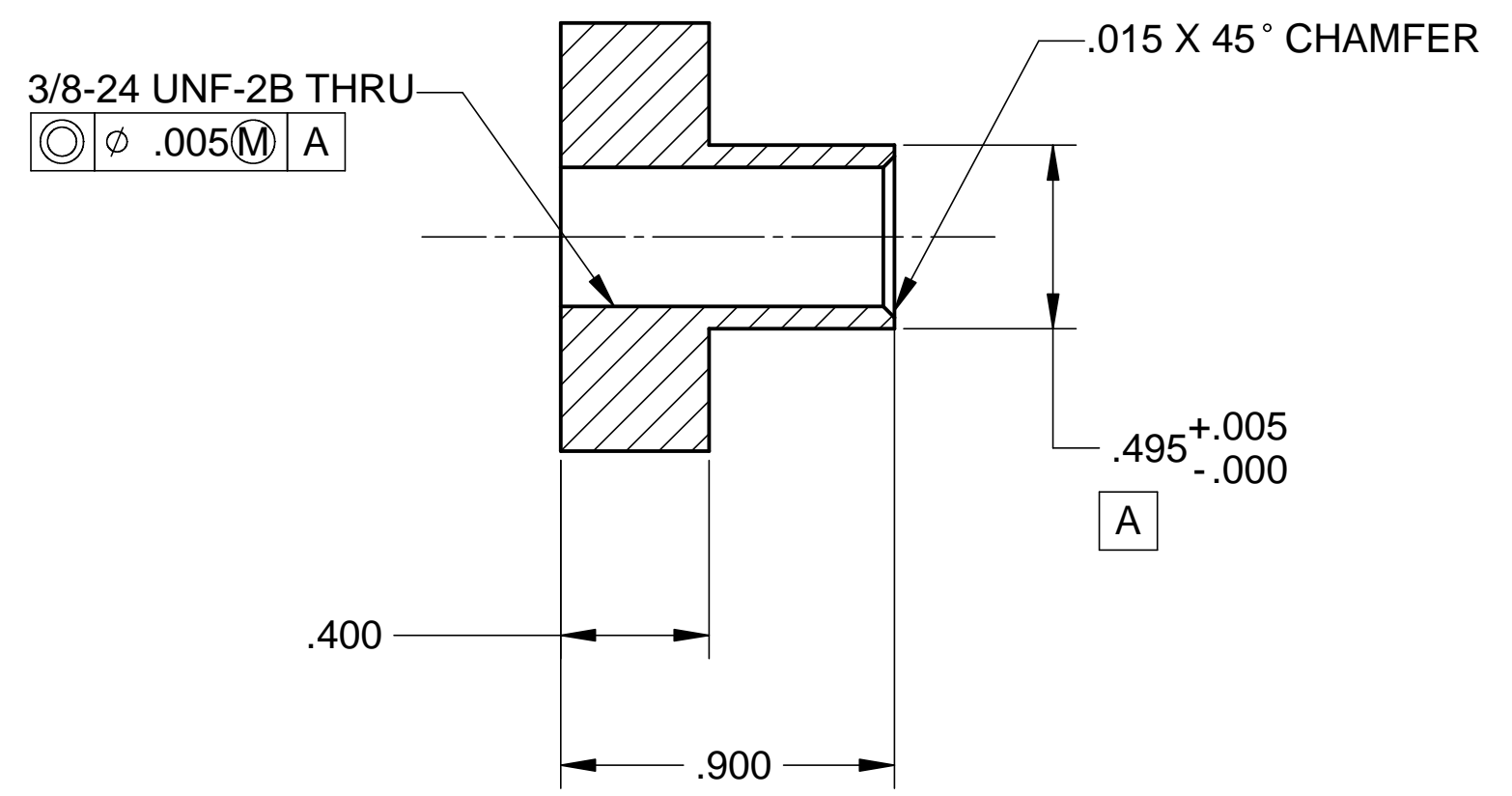
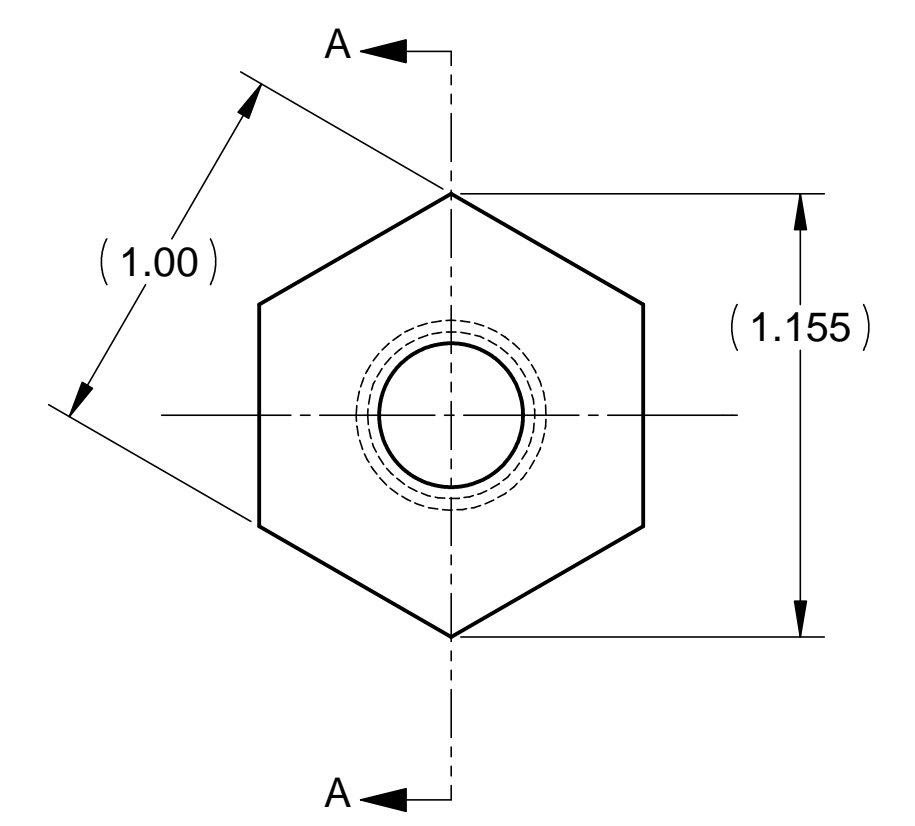
D

C

C

B

B



SECTION A-A  
SCALE 2 : 1

MATL: 1.0 SST HEX STOCK

NOTES: UNLESS OTHERWISE SPECIFIED

- ALL DIMENSIONS IN INCHES
- DIMENSIONS AND TOLERANCING PER ASME Y14.5M-1994
- SURFACE TEXTURE PER ANSI/ASME B 46.1-1985
- REMOVE ALL BURRS AND BREAK SHARP EDGES TO A MAXIMUM OF .015
- ALL INSIDE CORNERS TO BE .015 RADIUS MAX
- COUNTERSINK 82 DEGREES ALL TAPPED HOLES TO MAJOR DIAMETER
- COUNTERSINK 82 DEGREES APPROXIMATELY .015 DEEP ALL DRILLED HOLES
- PARTS TO BE THOROUGHLY CLEANED TO REMOVE ALL OIL, GREASE, DIRT AND CHIPS
- PART NUMBER (DRAWING NO. PLUS DASH NO. PLUS SERIAL NO. ) TO BE CLEARLY MARKED ON THE PART ITSELF.
- ALL FABRICATION, CLEANING, AND HANDLING MAINTAINED TO HYTEC SPECIFICATION: LIGO-TS-03 CATEGORY 1.
- NO SULFUR BASED CUTTING FLUIDS ALLOWED. APPROVED STAINLESS STEEL MACHINE LUBRICANT: RELTON A-9, RELTON
- PART WEIGHS .1 Lbs.

A

A

PARTS LIST

|   |  |   |                          |   |
|---|--|---|--------------------------|---|
| UNLESS OTHERWISE SPECIFIED:<br>DIMENSIONS ARE IN INCHES<br>-TOLERANCES- | CAD GENERATED DRAWING,<br>DO NOT MANUALLY UPDATE<br>DO NOT SCALE DRAWING |   |                          | <b>HYTEC, INC</b><br>TITLE<br><b>HAM BELLOWS<br/>                 COMPRESSION CLAMP<br/>                 CUSTOM HEX NUT</b> |
|   | DECIMALS<br>.XX = +/- .03<br>.XXX = +/- .010                             | ANGULAR = +/- 30'<br>SURFACE FINISH = 250 | FINISH                   |   |
| DESIGNED<br>W. K. MILLER  | SIGNATURE<br>W. K. MILLER  | DATE<br>3-26-98                           | CHECKED<br>HARRY SALAZAR | SCALE <b>2/1</b>  |
| DRAWN<br>W. K. MILLER   | ENGR.<br>T. THOMPSON   | APPROVED<br>T. THOMPSON                   | REVISION                 |   |

8 7 6 5 4 3 2 1