

8

7

6

5

4

3

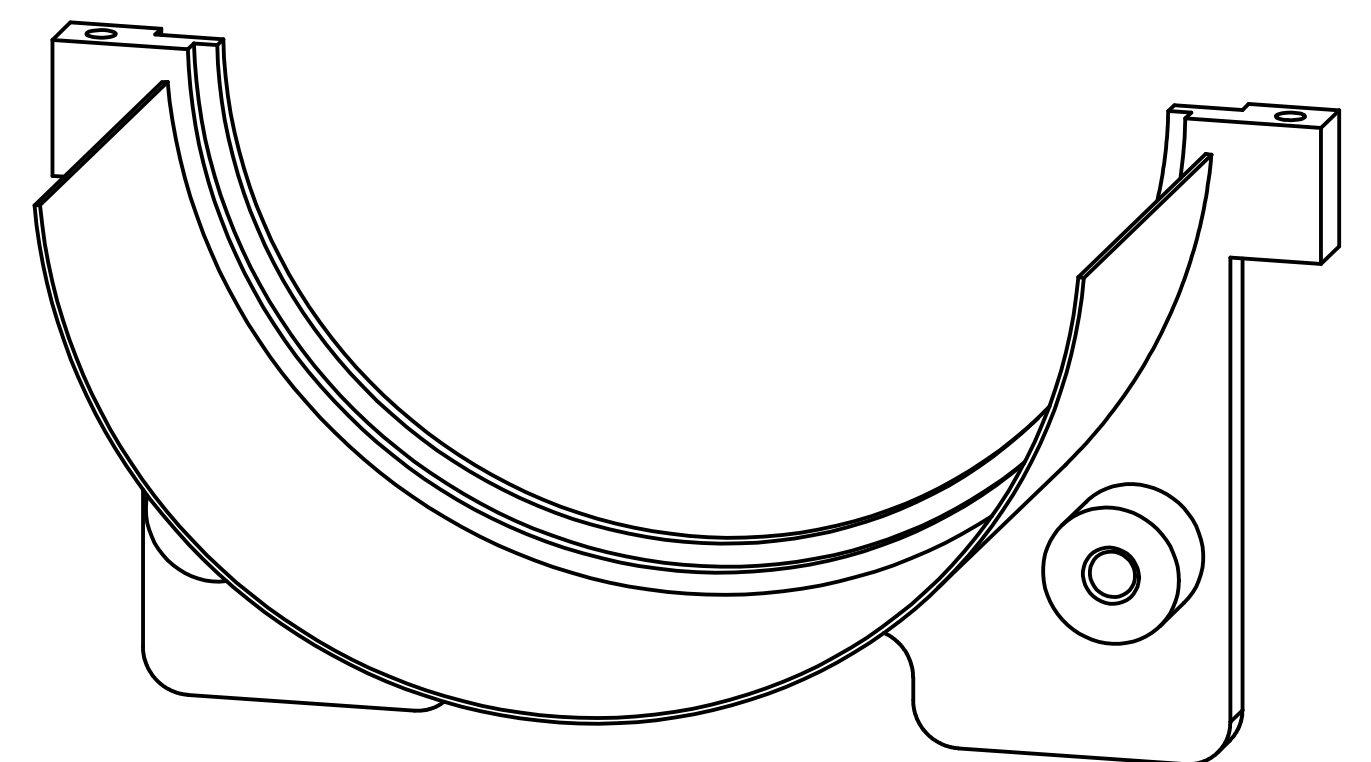
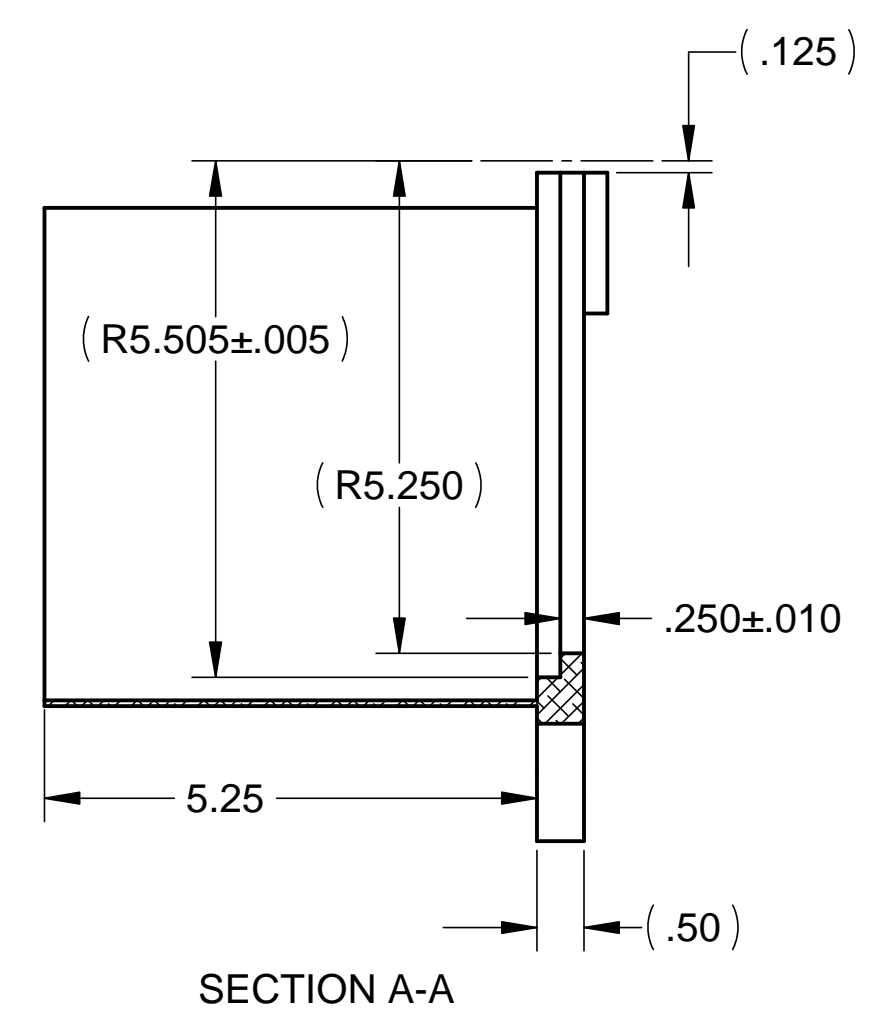
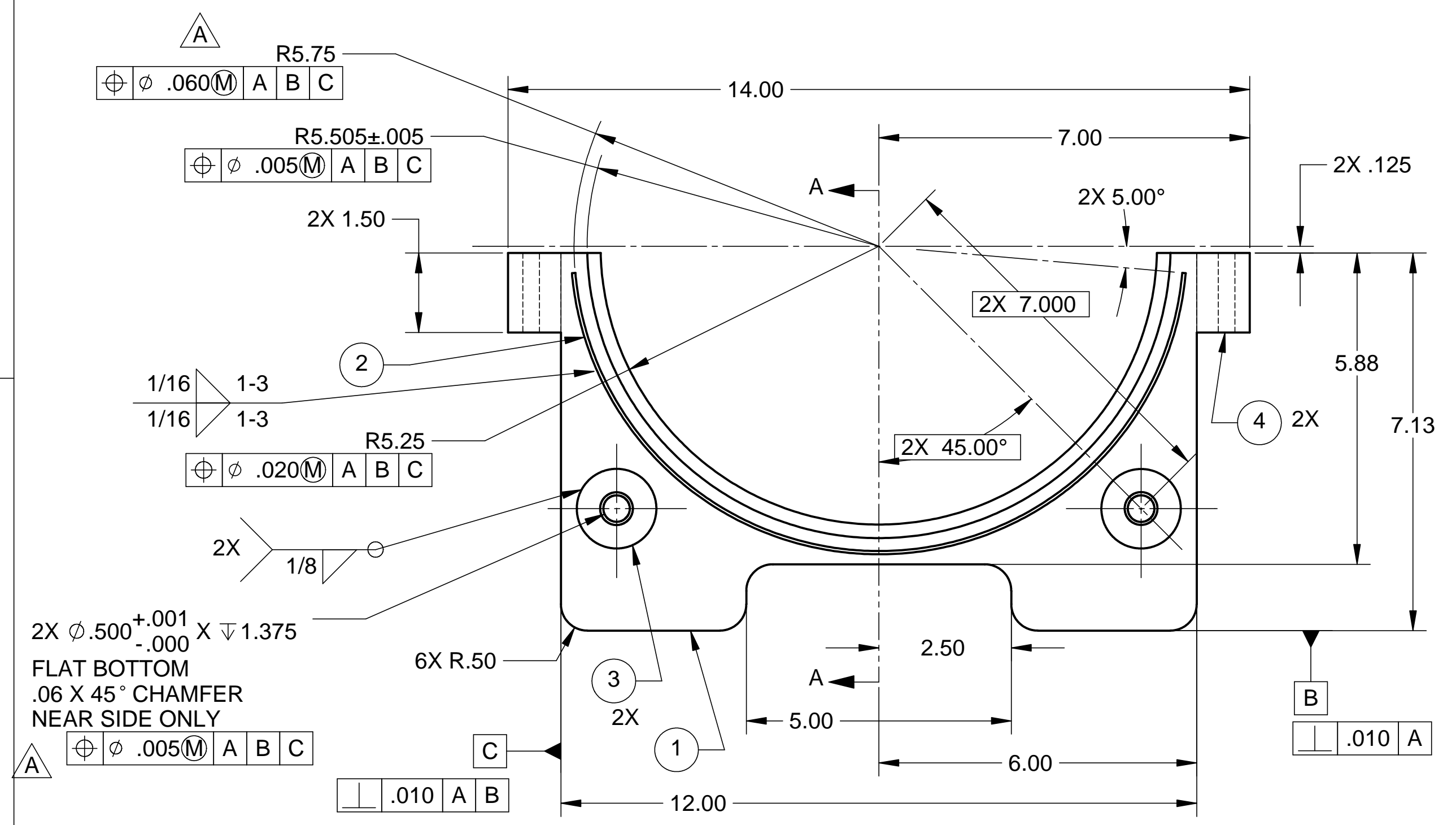
2

1

REVISIONS			
REV.	DESCRIPTION	DATE	APPROVED
A	ASSORTED CHANGES	4-20-98	WKM

D

D



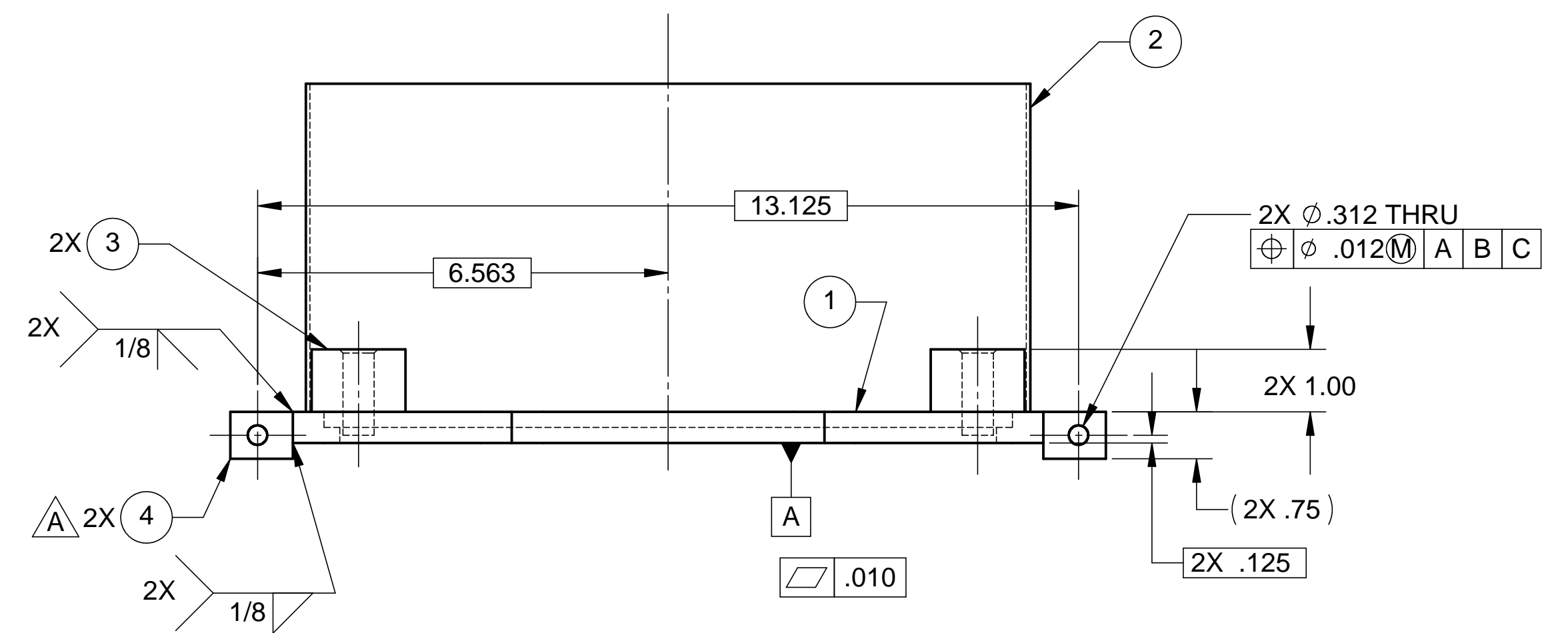
C

C

2X  $\phi .500^{+.001}_{-.000}$  X  $\nabla 1.375$   
 FLAT BOTTOM  
 .06 X 45° CHAMFER  
 NEAR SIDE ONLY

B

B



NOTES: UNLESS OTHERWISE SPECIFIED

- ALL DIMENSIONS IN INCHES
- DIMENSIONS AND TOLERANCING PER ASME Y14.5M-1994
- SURFACE TEXTURE PER ANSI/ASME B 46.1-1985
- REMOVE ALL BURRS AND BREAK SHARP EDGES TO A MAXIMUM OF .015
- ALL INSIDE CORNERS TO BE .015 RADIUS MAX
- COUNTERSINK 82 DEGREES ALL TAPPED HOLES TO MAJOR DIAMETER
- COUNTERSINK 82 DEGREES APPROXIMATELY .015 DEEP ALL DRILLED HOLES
- PART NUMBER (DRAWING NO. PLUS DASH NO. PLUS SERIAL NO.) TO BE CLEARLY MARKED ON THE PART ITSELF.
- ALL FABRICATION, CLEANING, AND HANDLING MAINTAINED TO HYTEC SPECIFICATION LIGO-TS-03 CATEGORY 1.
- ALL ALUM. WELDING DONE BY A GTAW PROCESS USING 2% THORIATED TUNGSTEN WELDING ELECTRODES AND ER4043 WELDING ROD (SPEC. PER AWS A5.10-80).
- NO SULFUR BASED CUTTING FLUIDS ALLOWED. APPROVED MACHINE LUBRICANT: ALUMICUT, MISTIC METAL MOVER, PRINCETON, IL.

ITEM NO.	QTY.	DESCRIPTION	MATERIAL
1	1	PLATE, .50 THK	6061-T6 ALUM
2	1	SHEET, .125 THK	6061-T6 ALUM
3	2	ROUNDSTOCK, 1.5 DIA.	6061-T6 ALUM
4	2	PLATE, .70 THK	6061-T6 ALUM

PARTS LIST

UNLESS OTHERWISE SPECIFIED: DIMENSIONS ARE IN INCHES -TOLERANCES-		CAD GENERATED DRAWING, DO NOT MANUALLY UPDATE DO NOT SCALE DRAWING		<b>HYTEC, INC</b> TITLE <b>HAM BELLOWS          COMPRESSION CLAMP          PART #2</b>		
DECIMALS .XX = +/- .03 .XXX = +/- .010	ANGULAR = +/- .30° SURFACE FINISH = 250					
FINISH	SIGNATURE	DATE				
	DESIGNED	W. K. MILLER	3/26/98			
	DRAWN	W. K. MILLER	3/26/98			
	CHECKED	HARRY SALAZAR	4-20-98			
	ENGR.	T. THOMPSON	4-20-98			
	APPROVED	T. THOMPSON	4-20-98			
PART NO. <b>D972969-1</b>	DWG. NO. <b>D972969</b>		SCALE 1/2	SIZE <b>D</b>	SHEET NO. <b>1 of 1</b>	
				REVISION <b>A</b>		

A

8

7

6

5

4

3

2

1