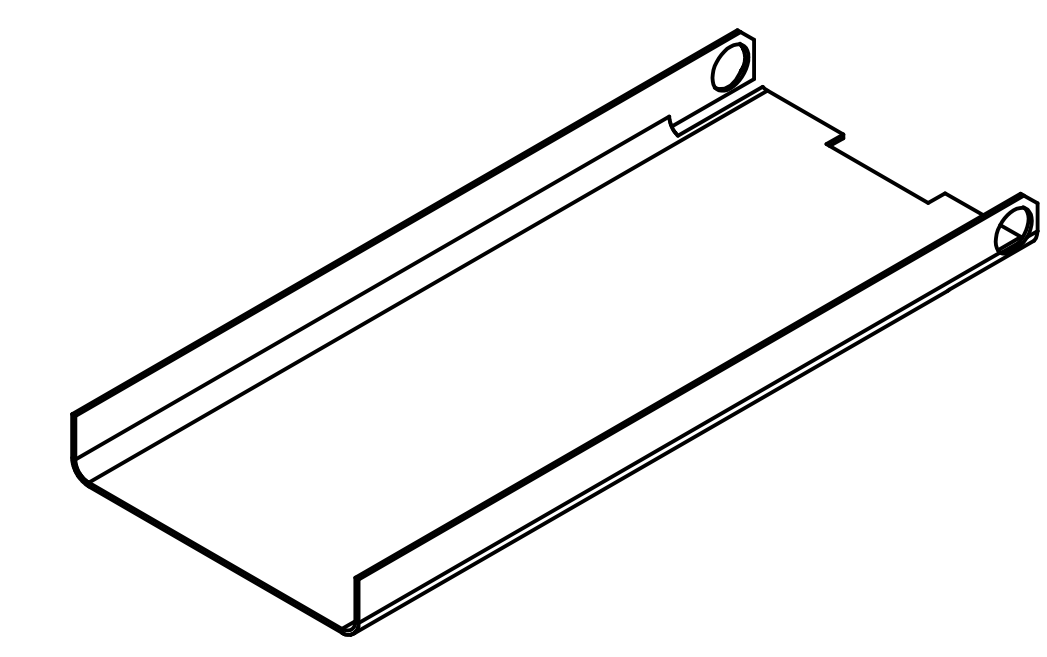
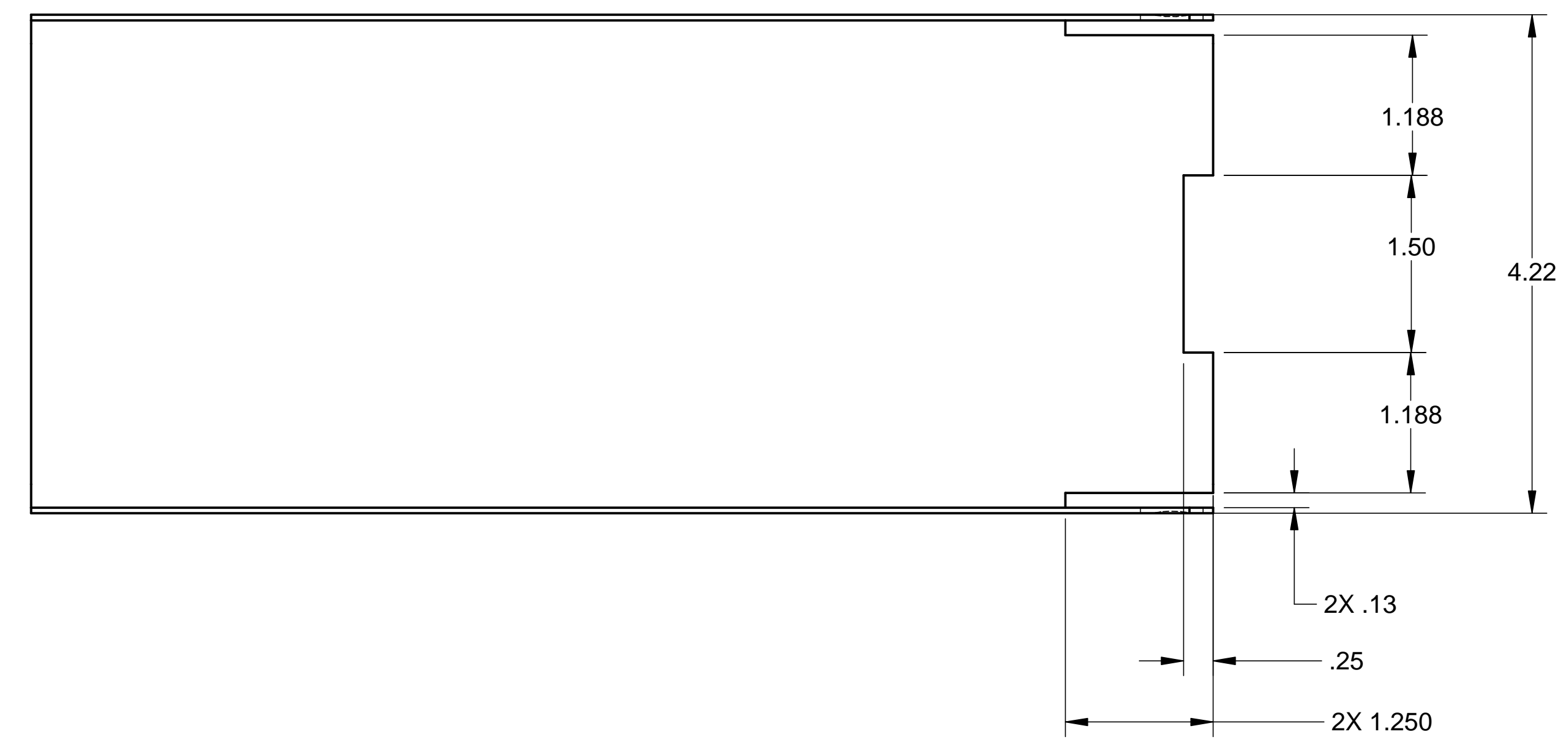


8 7 6 5 4 3 2 1

REVISIONS			
REV.	DESCRIPTION	DATE	APPROVED

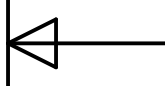
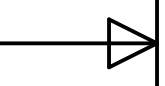
D

D



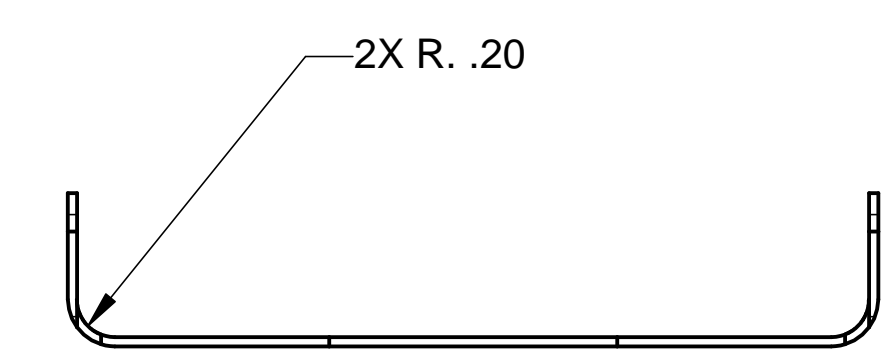
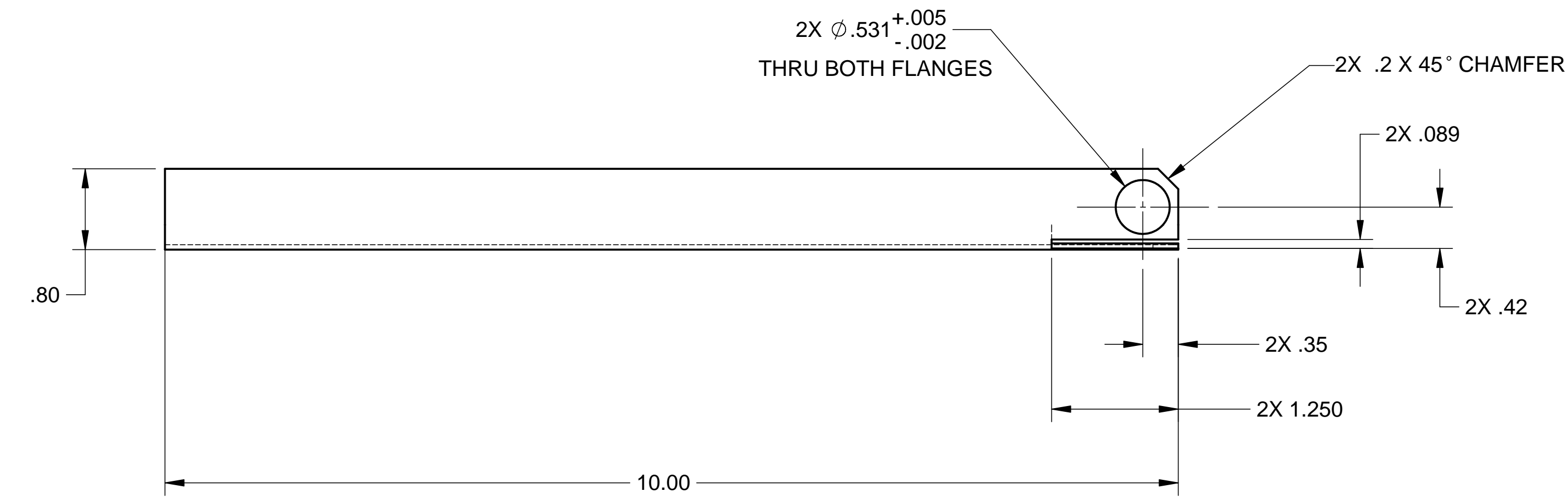
C

C



B

B



WEIGHT: .75 lbs

NOTES: UNLESS OTHERWISE SPECIFIED

1. ALL DIMENSIONS IN INCHES
2. DIMENSIONS AND TOLERANCING PER ASME Y14.5M-1994
3. SURFACE TEXTURE PER ANSI/ASME B 46.1-1985
4. REMOVE ALL BURRS AND BREAK SHARP EDGES TO A MAXIMUM OF .015
5. ALL INSIDE CORNERS TO BE .015 RADIUS MAX
6. COUNTERSINK 82 DEGREES ALL TAPPED HOLES TO MAJOR DIAMETER
7. COUNTERSINK 82 DEGREES APPROXIMATELY .015 DEEP ALL DRILLED HOLES
8. PARTS TO BE THOROUGHLY CLEANED TO REMOVE ALL OIL, GREASE, DIRT AND CHIPS
9. PART NUMBER (DRAWING NO. PLUS DASH NO. PLUS SERIAL NO.) TO BE CLEARLY MARKED ON THE PART ITSELF.

A

A

ITEM NO.	QTY.	DESCRIPTION	MATERIAL
1	1	SHEET, .048 THK.	304 EZ CUT STAINLESS STEEL
PARTS LIST			
UNLESS OTHERWISE SPECIFIED: DIMENSIONS ARE IN INCHES -TOLERANCES-		CAD GENERATED DRAWING, DO NOT MANUALLY UPDATE DO NOT SCALE DRAWING	
DECIMALS .XX = +/- .06 .XXX = +/- .020		ANGULAR = +/- 30' SURFACE FINISH = 250	
FINISH	SIGNATURE	DATE	HYTEC, INC TITLE HAM CENTERING JIG Z-ELEVATION STAGE HORIZONTAL PART DWG. NO. D972960 SIZE D SHEET NO. 1 of 1 SCALE 1/1 REVISION
DESIGNED	ROGER L. SMITH	1-21-98	
DRAWN	GERALD BUSTOS	1-21-98	
CHECKED	HARRY SALAZAR	----	
ENGR.	T. THOMPSON	----	
PART NO. D972960-1	APPROVED	T. THOMPSON	----

8 7 6 5 4 3 2 1