

8 7 6 5 4 3 2 1

REVISIONS			
REV.	DESCRIPTION	DATE	APPROVED

D

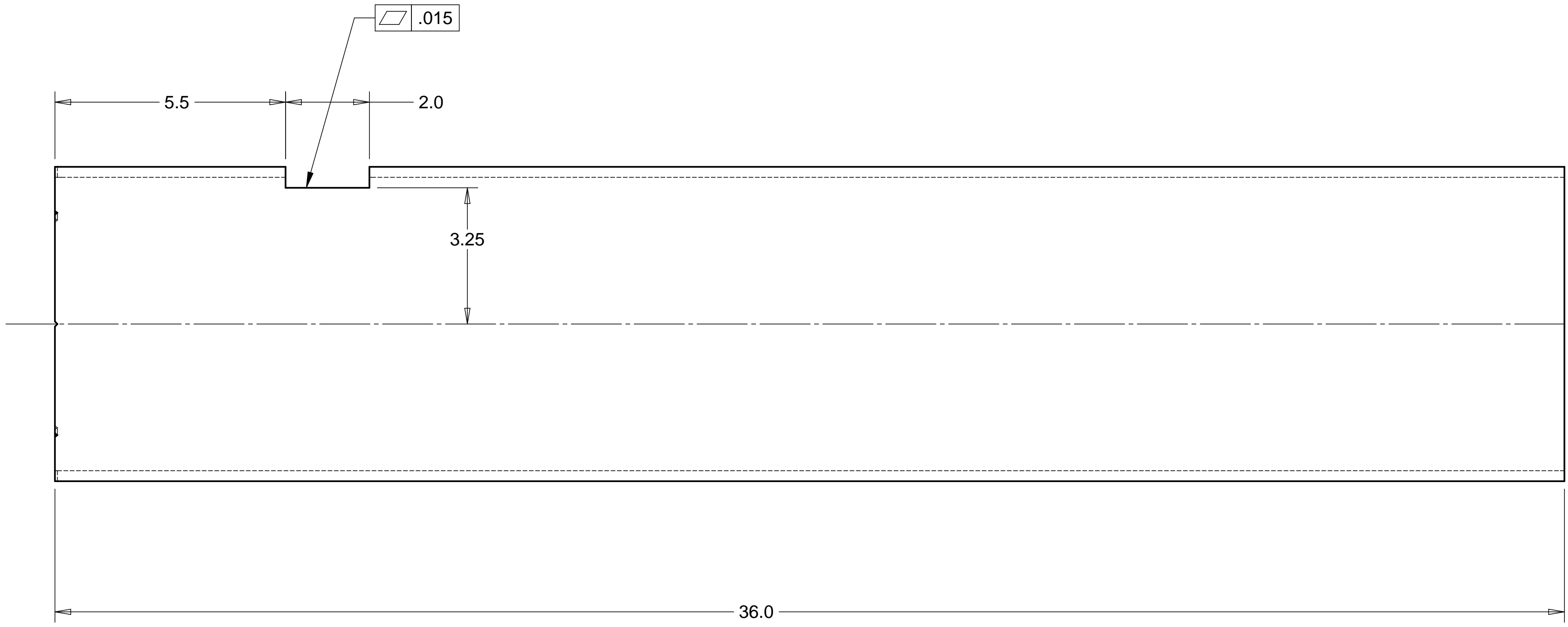
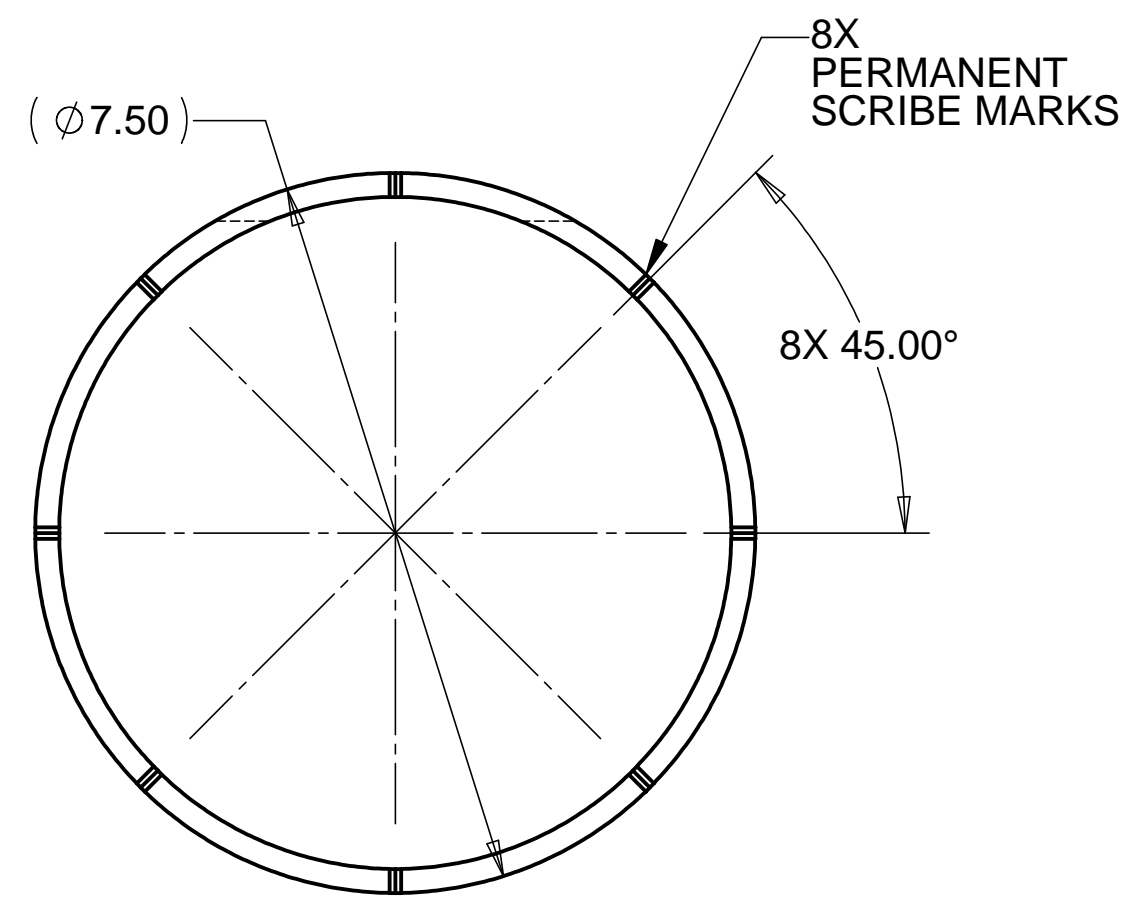
D

C

C

B

B



MATL: 7.5 O.D. X .25 WALL TUBE, ALUM. 6061-T6

NOTES: UNLESS OTHERWISE SPECIFIED

- ALL DIMENSIONS IN INCHES
- DIMENSIONS AND TOLERANCING PER ASME Y14.5M-1994
- SURFACE TEXTURE PER ANSI/ASME B 46.1-1985
- REMOVE ALL BURRS AND BREAK SHARP EDGES TO A MAXIMUM OF .015
- ALL INSIDE CORNERS TO BE .015 RADIUS MAX
- COUNTERSINK 82 DEGREES ALL TAPPED HOLES TO MAJOR DIAMETER
- COUNTERSINK 82 DEGREES APPROXIMATELY .015 DEEP ALL DRILLED HOLES
- PARTS TO BE THOROUGHLY CLEANED TO REMOVE ALL OIL, GREASE, DIRT AND CHIPS
- PART NUMBER (DRAWING NO. PLUS DASH NO. PLUS SERIAL NO. ) TO BE CLEARLY MARKED ON THE PART ITSELF.
- PART WEIGHS 19.1 Lbs.

A

A

8 7 6 5 4 3 2 1

PARTS LIST			
UNLESS OTHERWISE SPECIFIED: DIMENSIONS ARE IN INCHES -TOLERANCES- DECIMALS      ANGULAR = +/- 30' .X = +/- .1      SURFACE FINISH = 250 .XX = +/- .060	CAD GENERATED DRAWING, DO NOT MANUALLY UPDATE DO NOT SCALE DRAWING		<b>HYTEC, INC</b> TITLE <b>HAM ROLLER SYSTEM            TUBE JIG</b>
	FINISH	SIGNATURE	DATE
PART NO. <b>D972933-1</b>	DESIGNED	W. K. MILLER	12/12/97
	DRAWN	W. K. MILLER	12/12/97
	CHECKED	HARRY SALAZAR	2/2/98
	ENGR.	T. THOMPSON	2/2/98
APPROVED	T. THOMPSON	2/2/98	DWG. NO. <b>D972933</b> SIZE <b>D</b> SHEET NO. <b>1 of 1</b> SCALE 1/2      REVISION