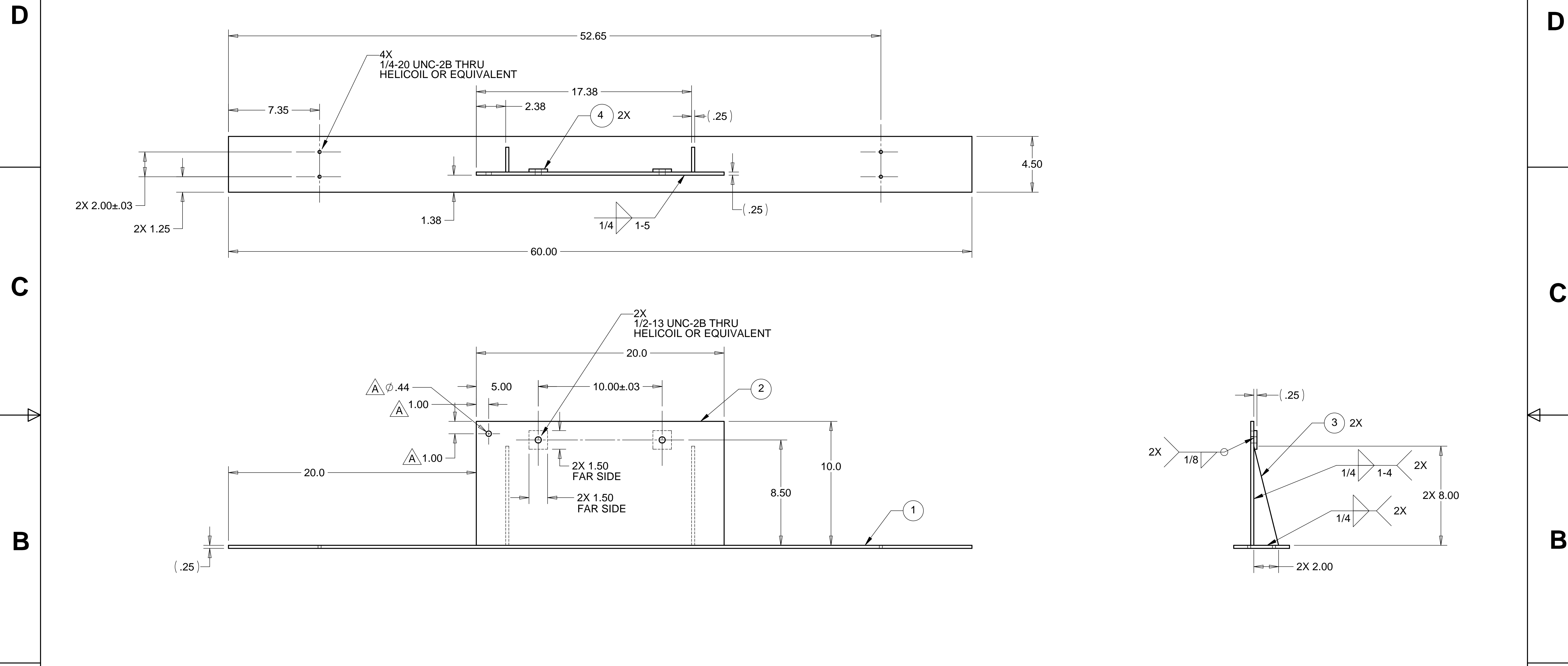


8 7 6 5 4 3 2 1

REVISIONS			
REV.	DESCRIPTION	DATE	APPROVED
A	REMOVED PAINT SPECIFICATION, ADDED PIN HOLE	3-14-98	WKM



- NOTES: UNLESS OTHERWISE SPECIFIED**
- ALL DIMENSIONS IN INCHES
  - DIMENSIONS AND TOLERANCING PER ASME Y14.5M-1994
  - SURFACE TEXTURE PER ANSI/ASME B 46.1-1985
  - REMOVE ALL BURRS AND BREAK SHARP EDGES TO A MAXIMUM OF .015
  - ALL INSIDE CORNERS TO BE .015 RADIUS MAX
  - COUNTERSINK 82 DEGREES ALL TAPPED HOLES TO MAJOR DIAMETER
  - COUNTERSINK 82 DEGREES APPROXIMATELY .015 DEEP ALL DRILLED HOLES
  - PARTS TO BE THOROUGHLY CLEANED TO REMOVE ALL OIL, GREASE, DIRT AND CHIPS
  - PART NUMBER (DRAWING NO. PLUS DASH NO. PLUS SERIAL NO. ) TO BE CLEARLY MARKED ON THE PART ITSELF.
  - PART WEIGHS 12.3 Lbs.

ITEM NO.	QTY.	DESCRIPTION	MATERIAL
1	1	1/4" THK BASEPLATE	ALUM. 6061-T6
2	1	1/4" THK VERTICAL PLATE	ALUM. 6061-T6
3	2	1/4" THK TRIANGULAR GUSSET	ALUM. 6061-T6
4	2	1/4" THK INSERT PLATE	

PARTS LIST				HYTEC, INC	
UNLESS OTHERWISE SPECIFIED: DIMENSIONS ARE IN INCHES -TOLERANCES-		CAD GENERATED DRAWING, DO NOT MANUALLY UPDATE DO NOT SCALE DRAWING		TITLE <b>HAM CROSSBEAM SPACER BASE WELDMENT</b>	
DECIMALS .X = +/- .1 .XX = +/- .060	ANGULAR = +/- 30' SURFACE FINISH = 250	SIGNATURE	DATE	DWG. NO.	SIZE SHEET NO.
FINISH		DESIGNED W. K. MILLER	12/12/97	D972921	D 1 of 1
		DRAWN W. K. MILLER	12/12/97		
PART NO. D972921-1		CHECKED HARRY SALAZAR	2/2/98		
		ENGR. T. THOMPSON	2/2/98		
		APPROVED T. THOMPSON	2/2/98	SCALE 1/4"	REVISION A

8 7 6 5 4 3 2 1