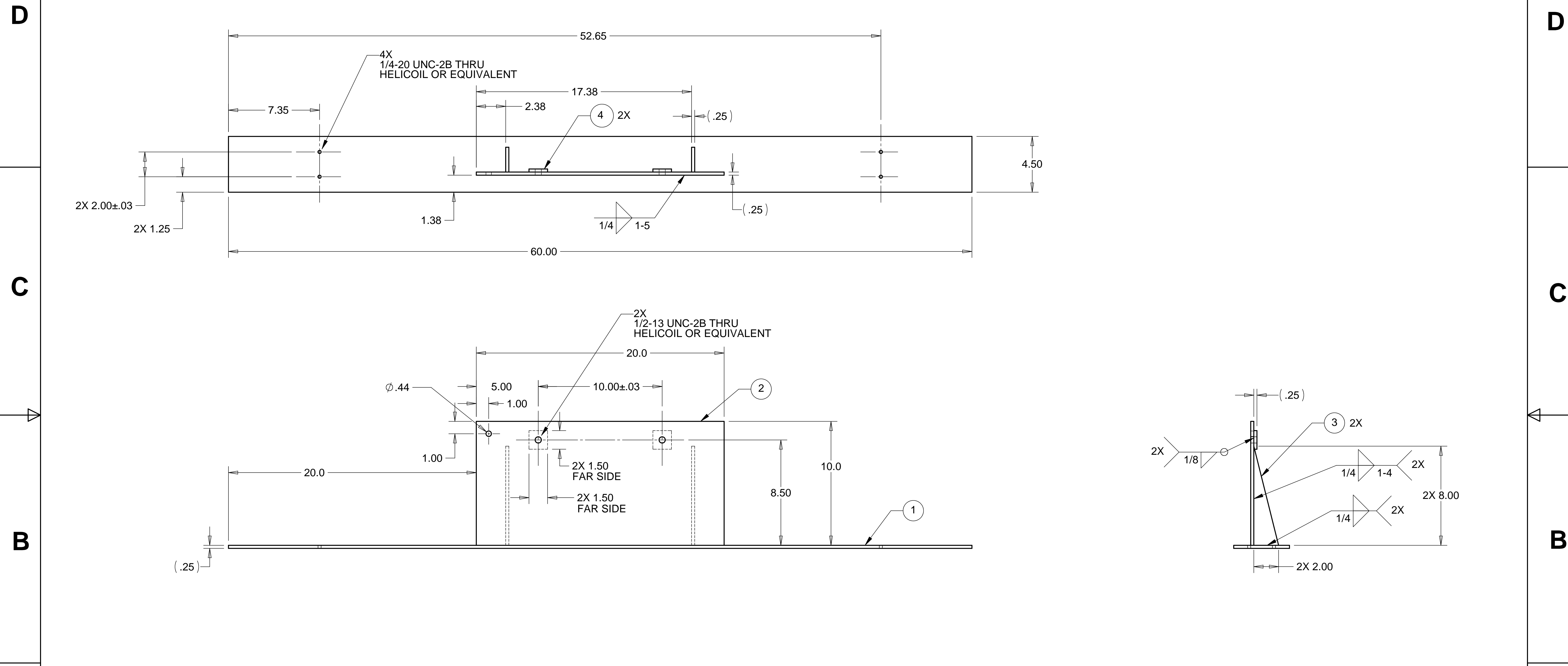


8 7 6 5 4 3 2 1

REVISIONS			
REV.	DESCRIPTION	DATE	APPROVED



NOTES: UNLESS OTHERWISE SPECIFIED

1. ALL DIMENSIONS IN INCHES
2. DIMENSIONS AND TOLERANCING PER ASME Y14.5M-1994
3. SURFACE TEXTURE PER ANSI/ASME B 46.1-1995
4. REMOVE ALL BURRS AND BREAK SHARP EDGES TO A MAXIMUM OF .015
5. ALL INSIDE CORNERS TO BE .015 RADIUS MAX
6. COUNTERSINK 82 DEGREES ALL TAPPED HOLES TO MAJOR DIAMETER
7. COUNTERSINK 82 DEGREES APPROXIMATELY .015 DEEP ALL DRILLED HOLES
8. PARTS TO BE THOROUGHLY CLEANED TO REMOVE ALL OIL, GREASE, DIRT AND CHIPS
9. PART NUMBER (DRAWING NO. PLUS DASH NO. PLUS SERIAL NO.) TO BE CLEARLY MARKED ON THE PART ITSELF.
10. PART WEIGHS 12.3 Lbs.
11. PAINT PART USING SHERMAN WILLIAMS MEDIUM TEXTURED BEIGE (D13 POLANE T-PLUS, POLYURETHANE ENAMEL, F63 SERIES, #SW-F63TX-H-1651-5864).

ITEM NO.	QTY.	DESCRIPTION	MATERIAL
1	1	1/4" THK BASEPLATE	ALUM. 6061-T6
2	1	1/4" THK VERTICAL PLATE	ALUM. 6061-T6
3	2	1/4" THK TRIANGULAR GUSSET	ALUM. 6061-T6
4	2	1/4" THK INSERT PLATE	

PARTS LIST			
UNLESS OTHERWISE SPECIFIED: DIMENSIONS ARE IN INCHES -TOLERANCES-		CAD GENERATED DRAWING, DO NOT MANUALLY UPDATE DO NOT SCALE DRAWING	
DECIMALS X = +/- .1 .XX = +/- .060	ANGULAR = +/- 30' SURFACE FINISH = 250	<p style="text-align: center;">HYTEC, INC</p> <p>TITLE HAM CROSSBEAM SPACER BASE WELDMENT</p>	
FINISH			
PART NO. D972921-1	DESIGNED	W. K. MILLER	12/12/97
	DRAWN	W. K. MILLER	12/12/97
	CHECKED	HARRY SALAZAR	2/2/98
	ENGR.	T. THOMPSON	2/2/98
APPROVED	T. THOMPSON	2/2/98	
SCALE 1/4"		REVISION	

8 7 6 5 4 3 2 1