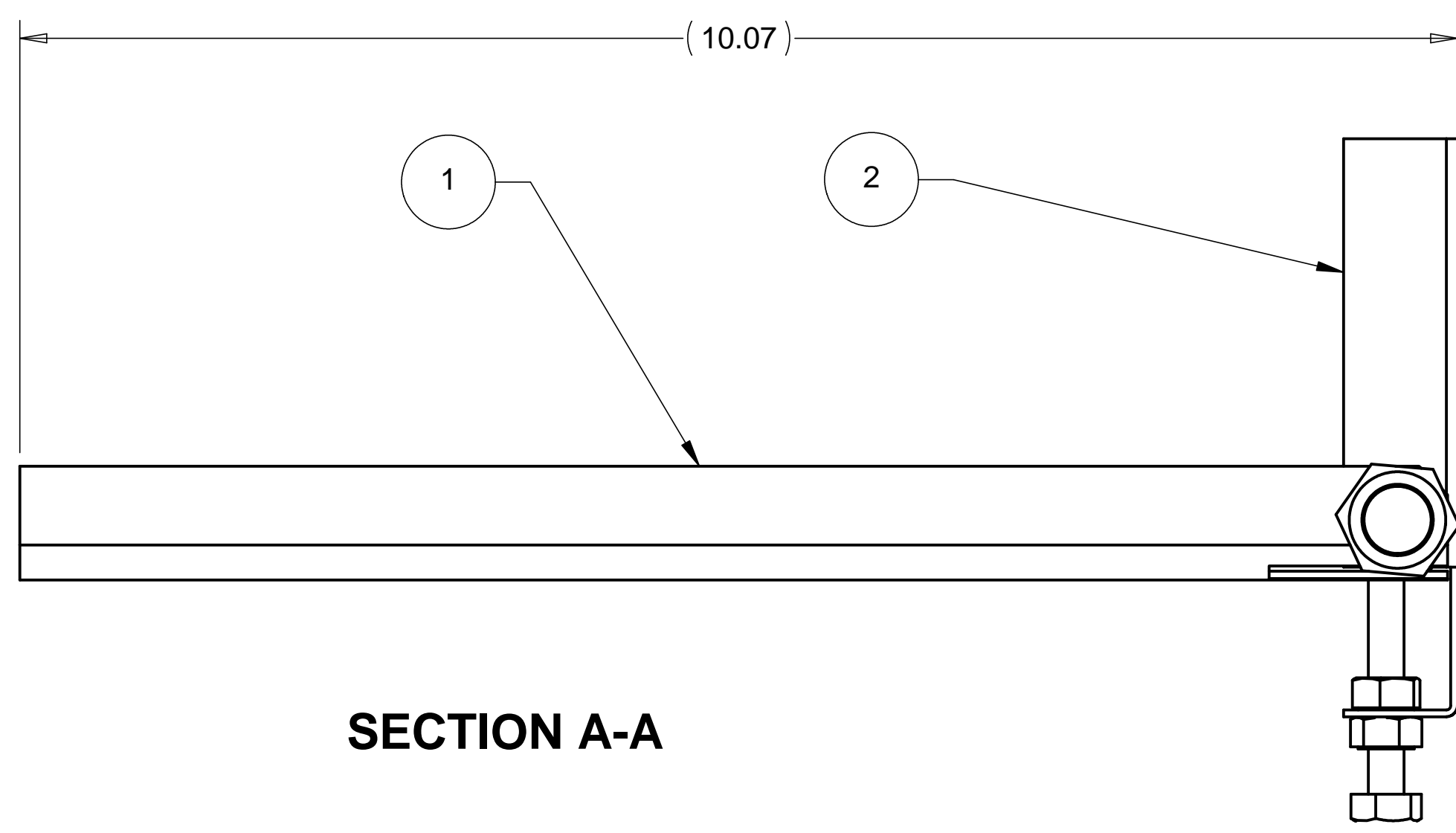
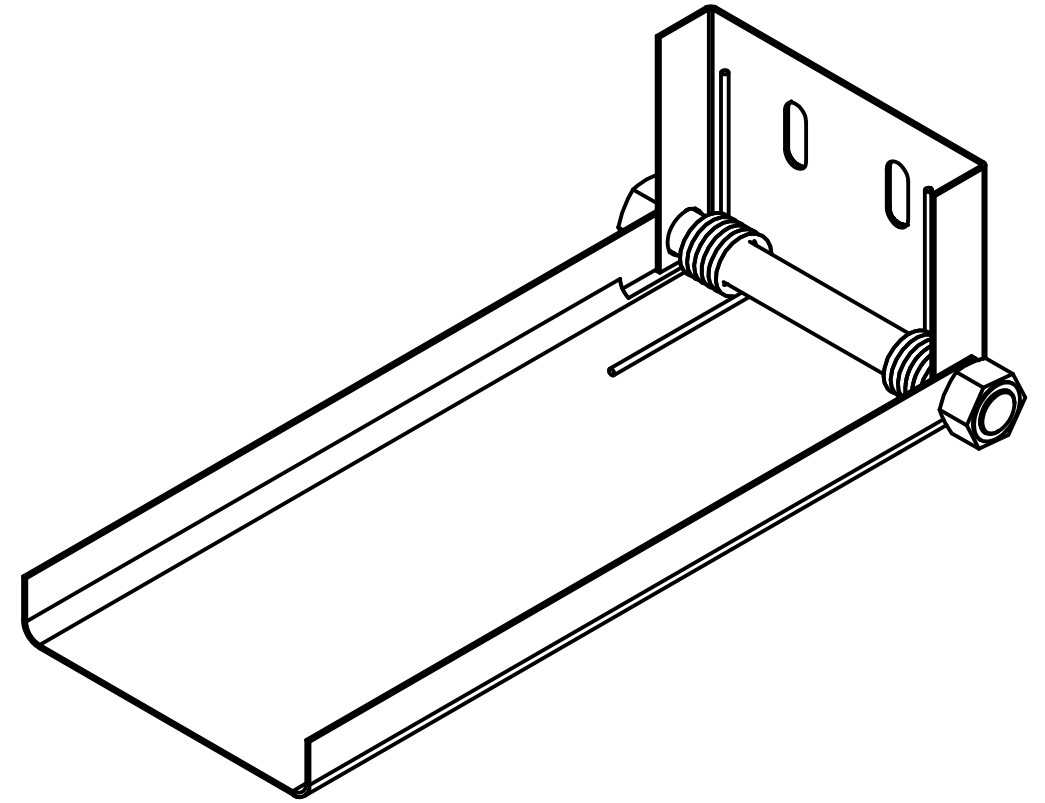


8 7 6 5 4 3 2 1

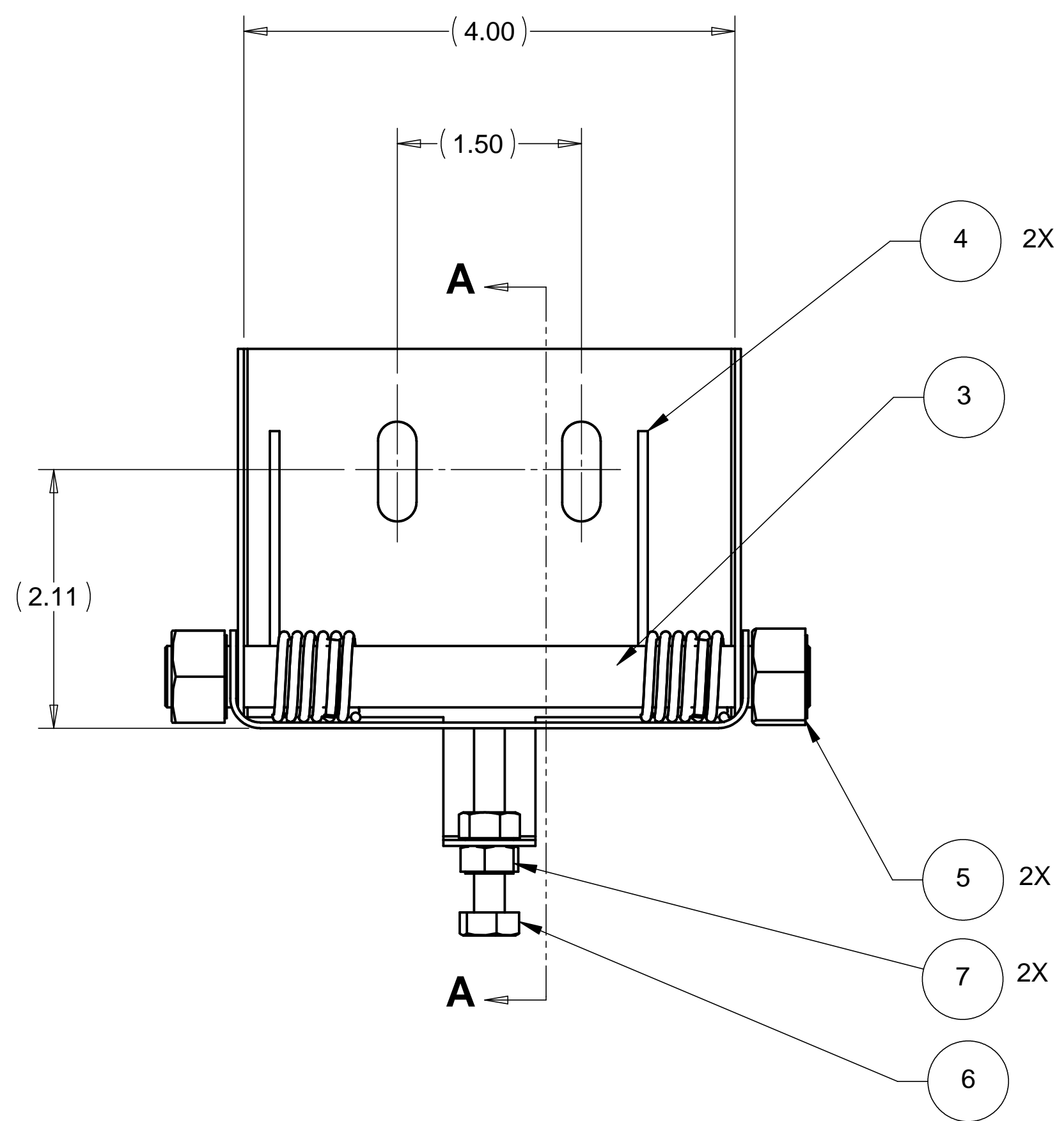
REVISIONS			
REV.	DESCRIPTION	DATE	APPROVED

D
C
B
A

D
C
B
A



SECTION A-A



WEIGHT: 1.3 lbs

ITEM NO.	QTY.	PART NO.	DESCRIPTION
1	1	D972960-1	Z-ELEVATION HORIZONTAL PART
2	1	D972425-1	Z-ELEVATION VERTICAL PART
3	1	D972426-1	Z-ELEVATION HINGE PIN
4	2	McMASTER #9287K47	TORSION SPRINGS
5	2		NUT, HEX 1/2-13 UNC-2B, STAINLESS STEEL
6	1		BOLT, HEX HD 1/4-20 UNC-2A X 2.0 LG., STAINLESS STEEL
7	2		NUT, HEX 1/4-20 UNC-2B, STAINLESS STEEL

PARTS LIST			
UNLESS OTHERWISE SPECIFIED: DIMENSIONS ARE IN INCHES -TOLERANCES-		CAD GENERATED DRAWING, DO NOT MANUALLY UPDATE DO NOT SCALE DRAWING	
DECIMALS .X = +/- .1 .XX = +/- .03 .XXX = +/- .010	ANGULAR = +/- .30° SURFACE FINISH = 250	<p>HYTEC, INC</p> <p>TITLE HAM CENTERING JIG Z-ELEVATION STAGE SUB-ASSEMBLY</p>	
FINISH		SIGNATURE	DATE
		DESIGNED ROGER L. SMITH	1-21-98
		DRAWN GERALD BUSTOS	1-21-98
		CHECKED HARRY SALAZAR	----
		ENGR. T. THOMPSON	----
		APPROVED T. THOMPSON	----
PART NO. D972891-1		DWG. NO. D972891	SIZE SHEET NO. D 1 of 1
		SCALE 1/1	REVISION

8 7 6 5 4 3 2 1