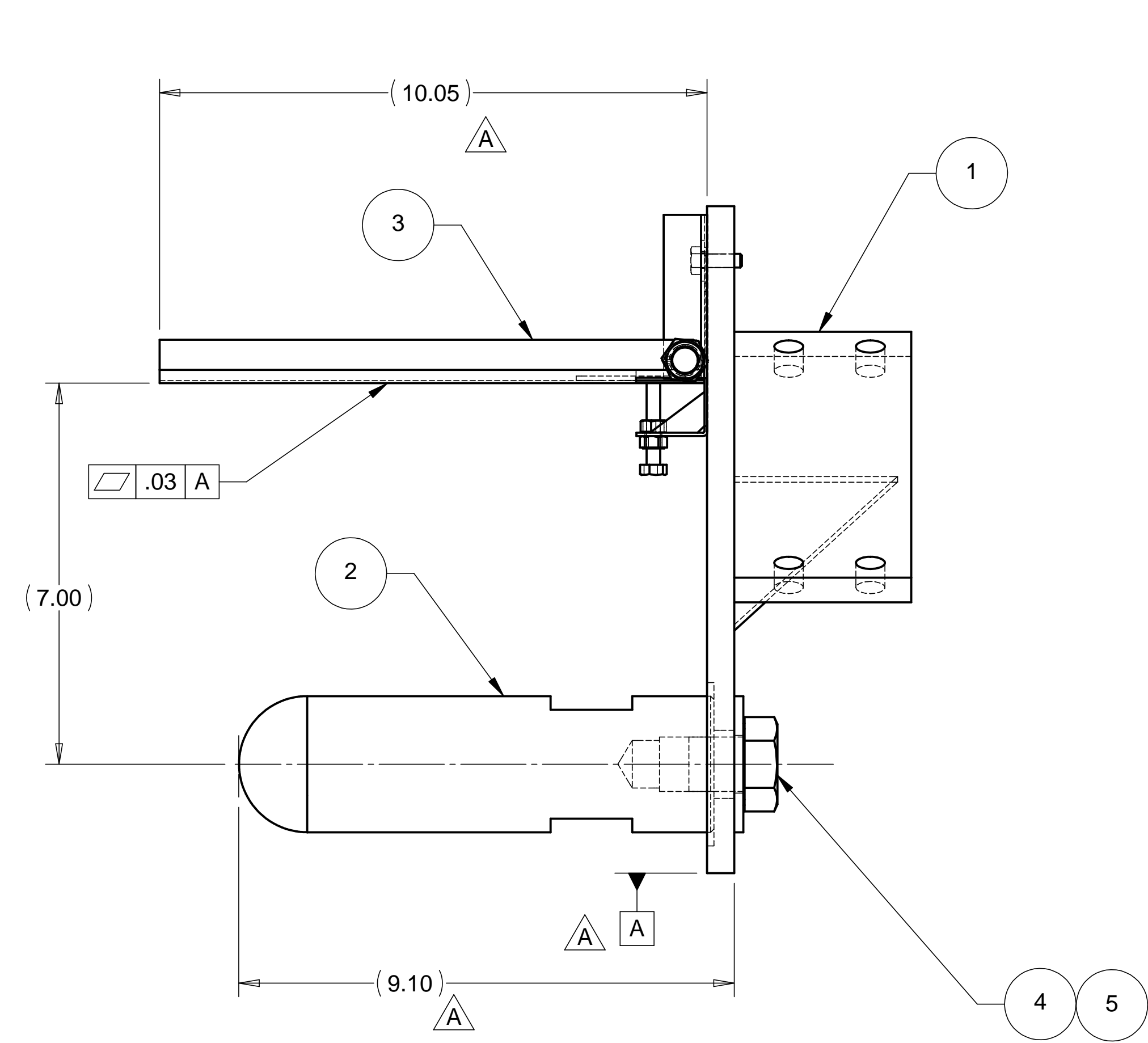
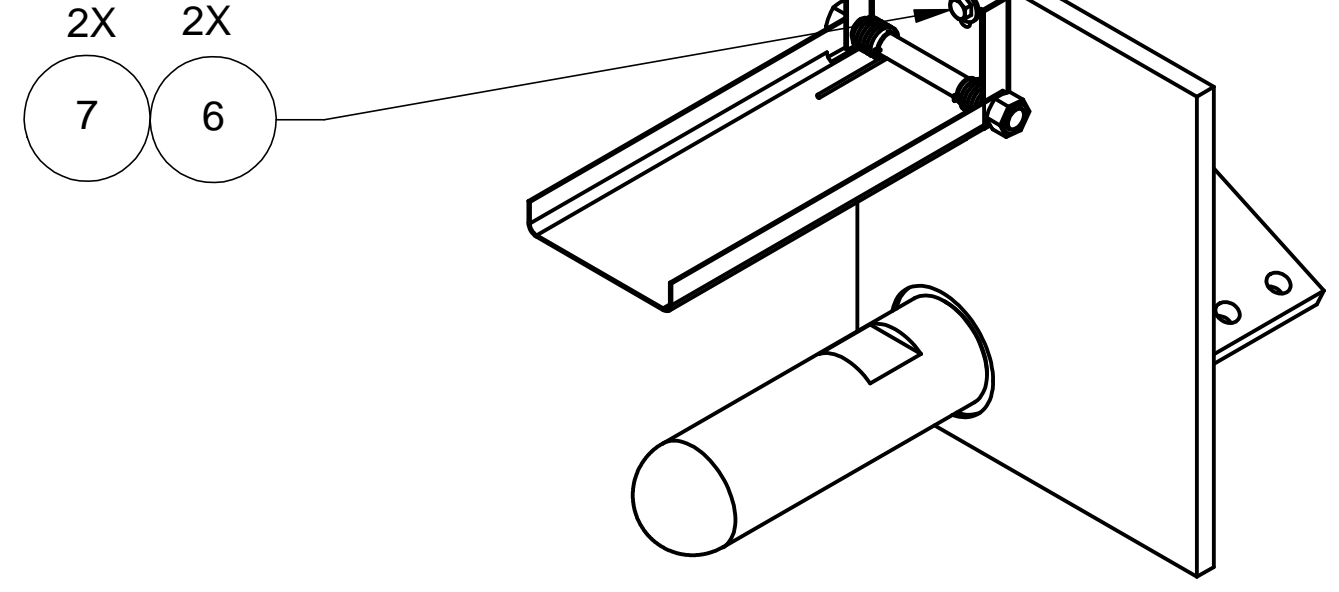
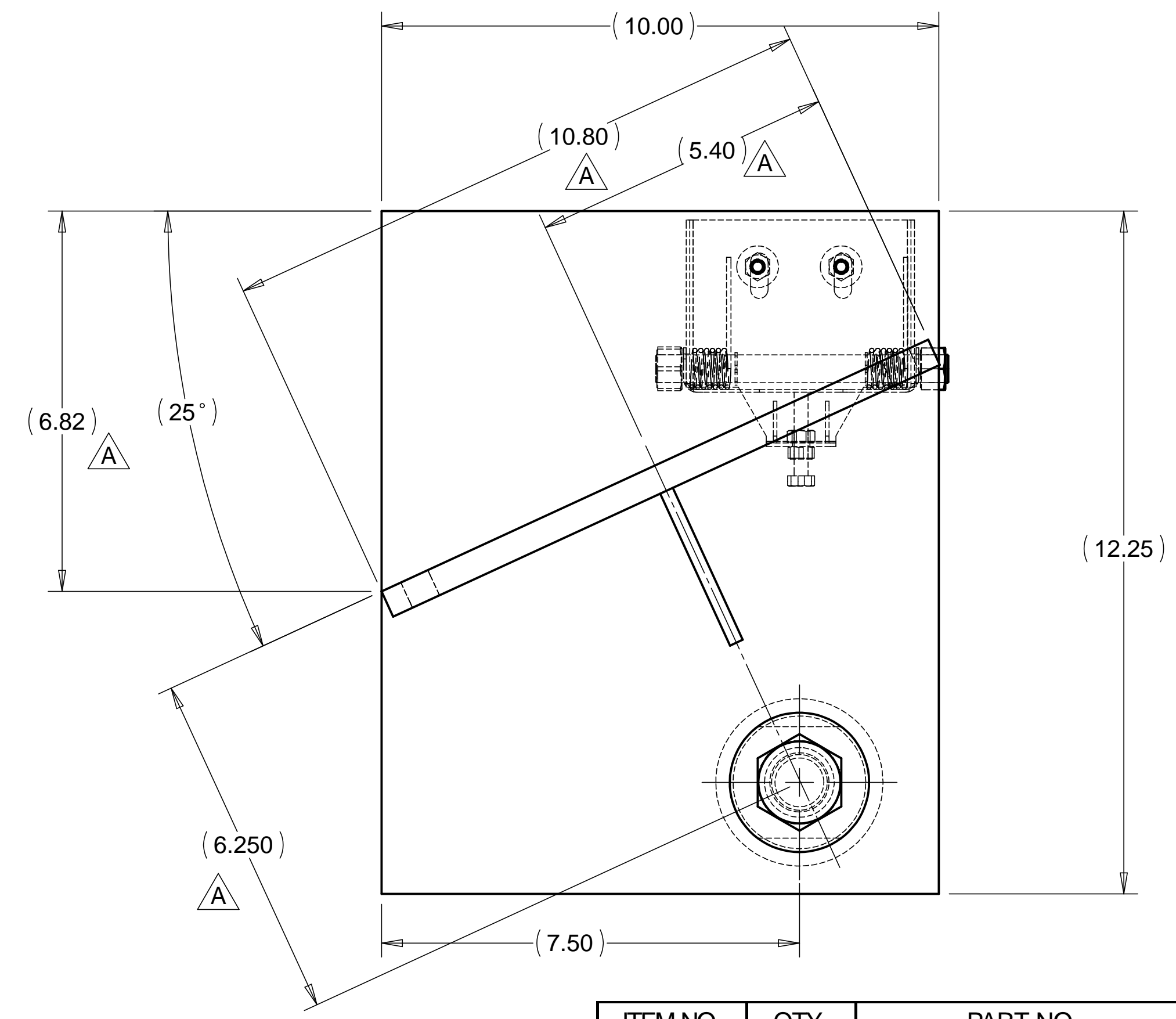


8 7 6 5 4 3 2 1

REVISIONS			
REV.	DESCRIPTION	DATE	APPROVED
A	SEE ECM FOR CHANGES	3-23-98	WKM



WEIGHT: 35.3 lbs



ITEM NO.	QTY.	PART NO.	DESCRIPTION
1	1	D972959-1	HAM CENTERING JIG RIGHT SIDE WELDMENT
2	1	D972957-1	HAM CENTERING JIG POINT CONTACT
3	1	D972377-3	BSC PIER LIFTING JIG ELEVATION STAGE SUB-ASSY
4	1		BOLT, HEX HD 1-8 UNC-2B X 1.25 LG., STAINLESS STEEL
5	1		WASHER, REGULAR 1.00 DIA., STAINLESS STEEL
6	2		SCREW, HEX HD .250-20 UNC-2B X .50 LG., STAINLESS STEEL
7	2		WASHER, REGULAR .250 DIA., STAINLESS STEEL

PARTS LIST			
UNLESS OTHERWISE SPECIFIED: DIMENSIONS ARE IN INCHES -TOLERANCES-		CAD GENERATED DRAWING, DO NOT MANUALLY UPDATE DO NOT SCALE DRAWING	
DECIMALS .X = +/- .1 .XX = +/- .03 .XXX = +/- .010	ANGULAR = +/- .30° SURFACE FINISH = 250	<p>HYTEC, INC</p> <p>TITLE HAM CENTERING JIG RIGHT SIDE SUB-ASSEMBLY</p>	
FINISH		SIGNATURE	DATE
		W. K. MILLER	1-21-98
		GERALD BUSTOS	1-21-98
		HARRY SALAZAR	3-14-98
		T. THOMPSON	3-14-98
		T. THOMPSON	3-14-98
PART NO. D972890-1		DWG. NO. D972890	SIZE SHEET NO. D 1 of 1
		SCALE 1/2	REVISION A

8 7 6 5 4 3 2 1

D
C
B
A

D
C
B
A