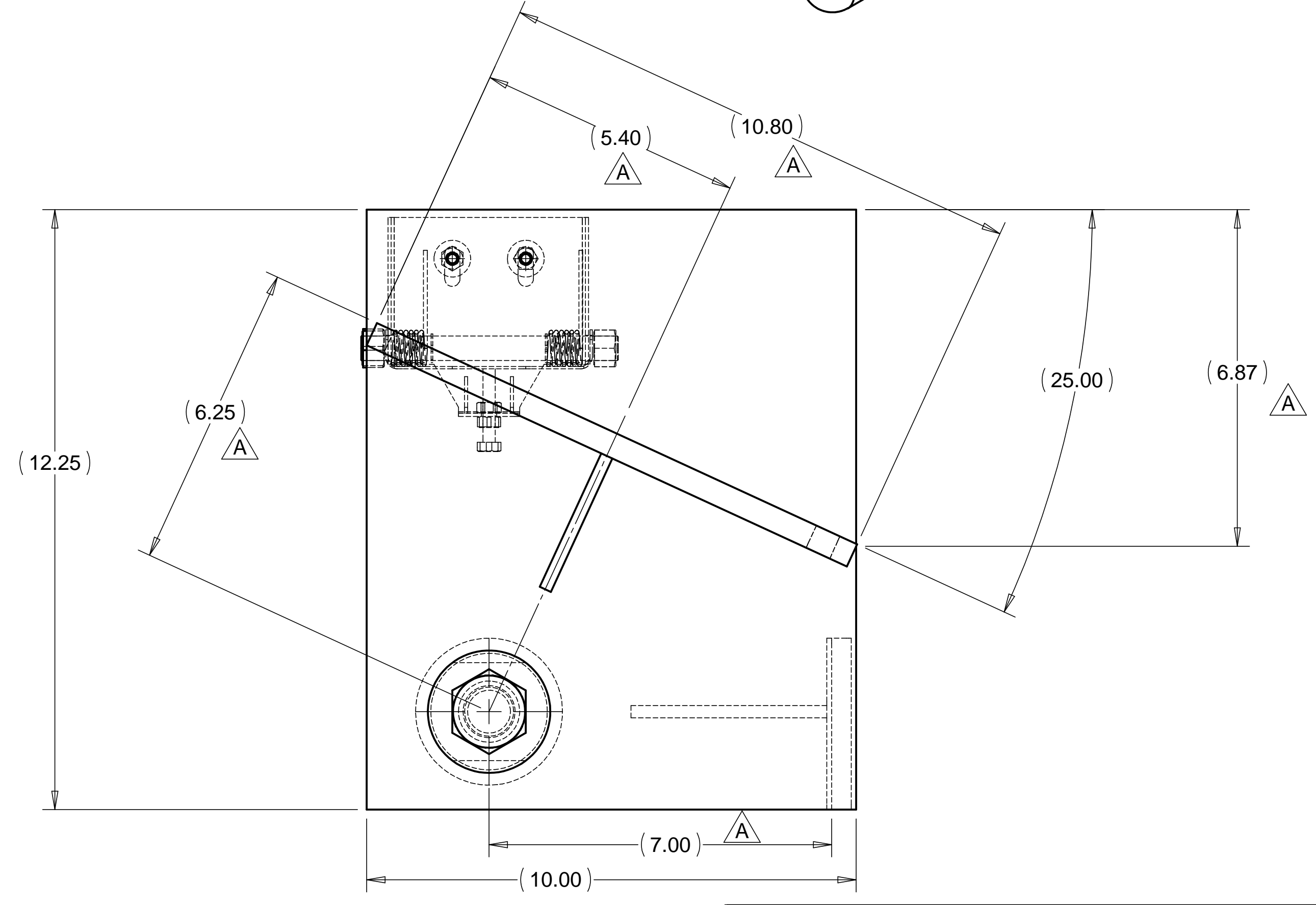
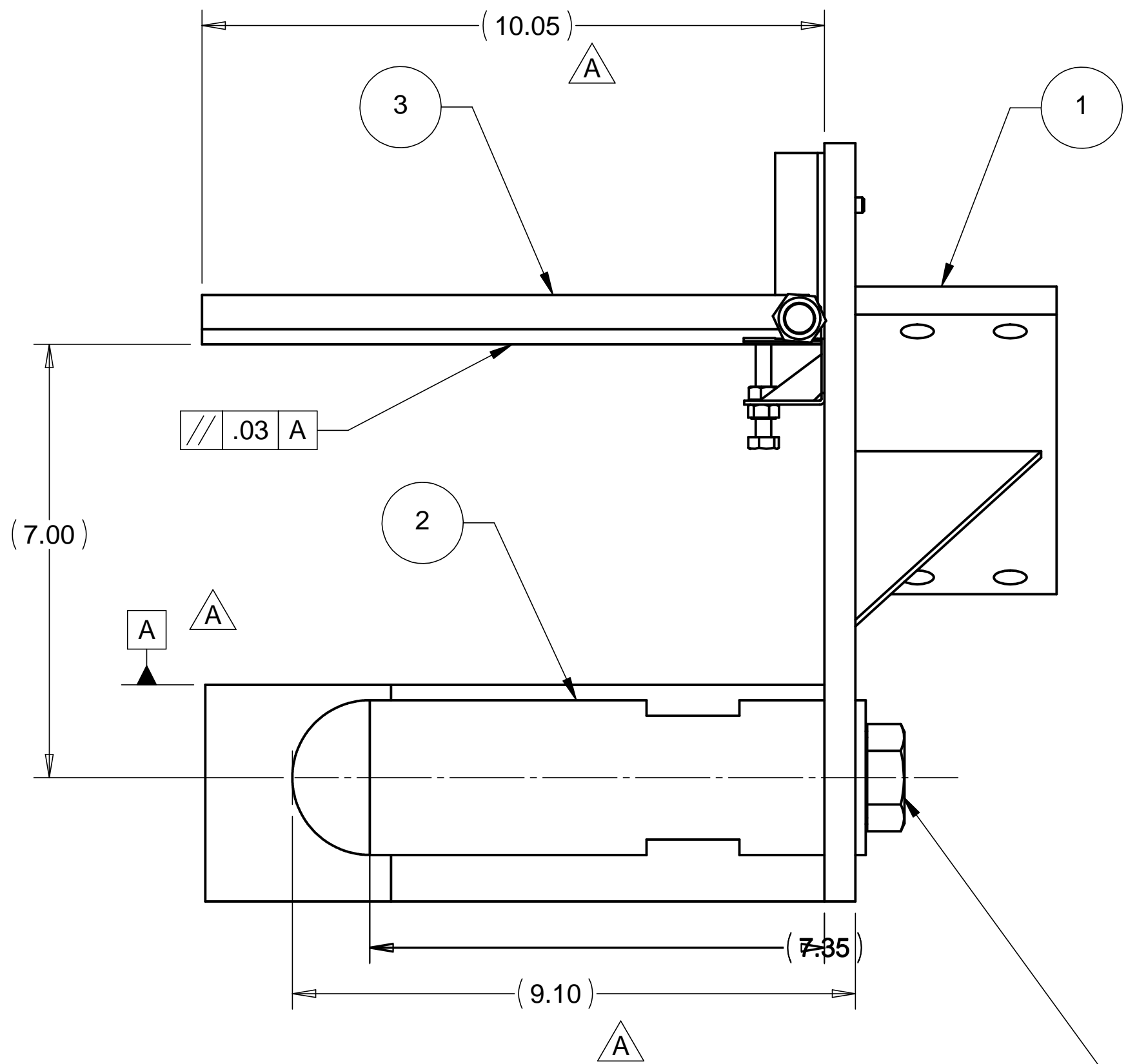
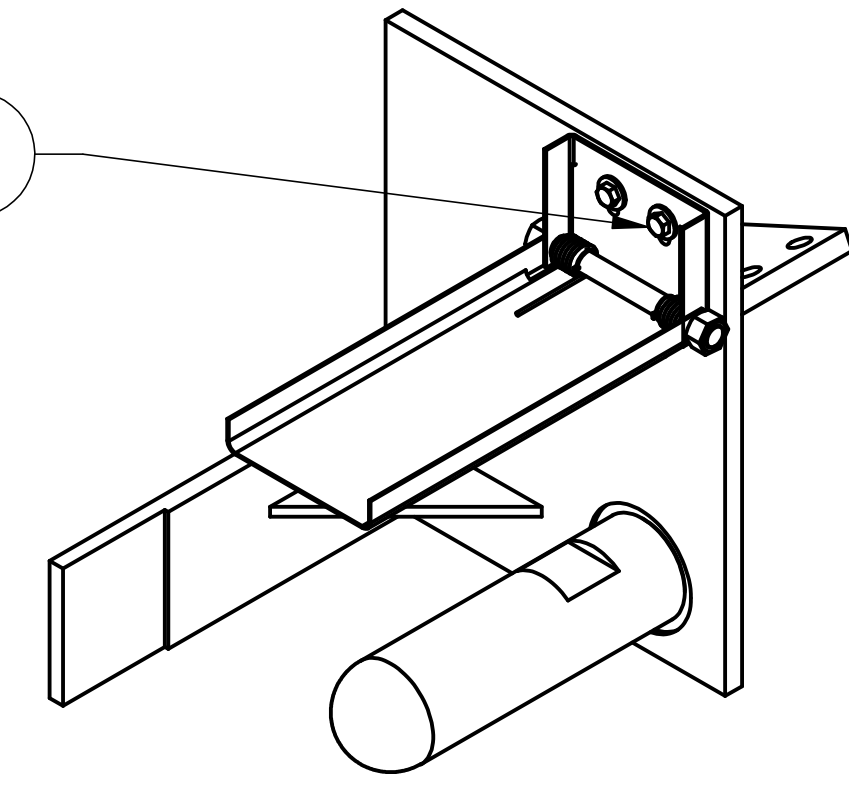


| REVISIONS |                                    | DATE    | APPROVED |
|-----------|------------------------------------|---------|----------|
| REV. A    | DESCRIPTION<br>SEE ECN FOR CHANGES | 3-23-98 | WKM      |



WEIGHT: 40.6 lbs  $\triangle A$

| ITEM NO. | QTY. | PART NO.  | DESCRIPTION   |
|----------|------|-----------|---|
| 1        | 1    | D972958-1 | HAM CENTERING JIG LEFT SIDE WELDMENT                    |
| 2        | 1    | D972957-1 | HAM CENTERING JIG POINT CONTACT                         |
| 3        | 1    | D972377-3 | BSC PIER LIFTING JIG ELEVATION STAGE SUB-ASSY           |
| 4        | 1    |           | BOLT, 1-8 UNC-2B X 1.25 LG., STAINLESS STEEL            |
| 5        | 1    |           | WASHER, REGULAR 1.00 DIA., STAINLESS STEEL              |
| 6        | 2    |           | SCREW, HEX HD .250-20 UNC-2B X .50 LG., STAINLESS STEEL |
| 7        | 2    |           | WASHER, REGULAR .250 DIA., STAINLESS STEEL              |

| PARTS LIST  |                   |  |                        | HYTEC, INC  |                            |
|---|-------------------|--|------------------------|---|----------------------------|
| UNLESS OTHERWISE SPECIFIED:<br>DIMENSIONS ARE IN INCHES<br>-TOLERANCES- |                   | CAD GENERATED DRAWING,<br>DO NOT MANUALLY UPDATE<br>DO NOT SCALE DRAWING |                        | TITLE<br>HAM CENTERING JIG<br>LEFT SIDE<br>ASSEMBLY |                            |
| DECIMALS<br>.X = +/- .1<br>.XX = +/- .03<br>.XXX = +/- .010             | ANGULAR = +/- 30' | SURFACE FINISH = 250   | FINISH                 | DESIGNED<br>W. K. MILLER                            | DATE<br>1-21-98            |
| PART NO.<br>D972889-1   |                   |  | DRAWN<br>GERALD BUSTOS | CHECKED<br>HARRY SALAZAR                            | DATE<br>1-21-98<br>3-14-98 |
|   |                   |  | ENGR.<br>T. THOMPSON   | APPROVED<br>T. THOMPSON                             | DATE<br>3-14-98<br>3-14-98 |
|   |                   |  |                        | DWG. NO.<br>D972889                                 | SIZE<br>D                  |
|   |                   |  |                        | SHEET NO.<br>1 of 1                                 | REVISION<br>A              |

