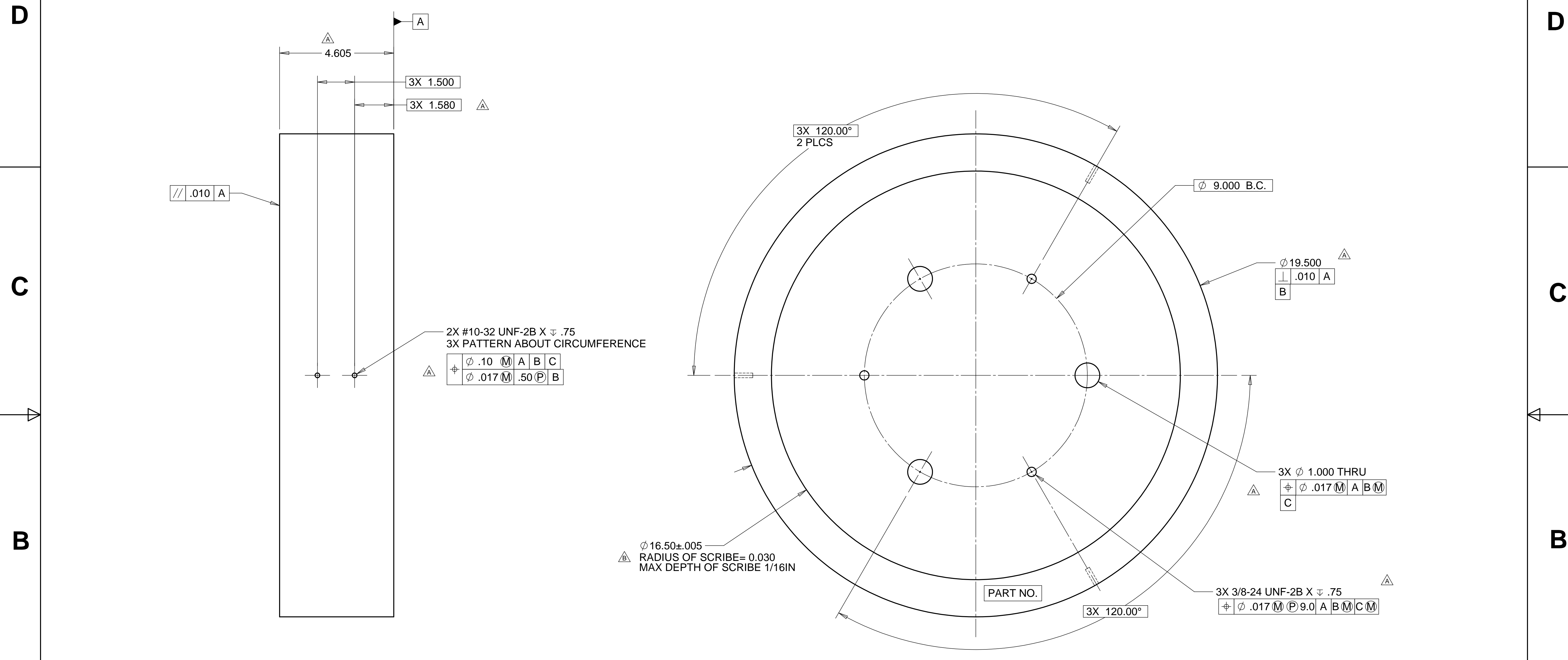


8 7 6 5 4 3 2 1

REVISIONS			
REV.	DESCRIPTION	DATE	APPROVED
A	SEE ECN# D972712-A FOR CHANGE LIST	11-03-97	T. THOMPSON
B	SEE ECN# D972712-B FOR CHANGE LIST	04-15-98	T. THOMPSON



2X #10-32 UNF-2B X .75
3X PATTERN ABOUT CIRCUMFERENCE

Ø .10	M	A	B	C
Ø .017	M	.50	P	B

Ø 19.500
|.010 A
B

3X Ø 1.000 THRU
|.017 M A B M
C

3X 3/8-24 UNF-2B X .75
|.017 M P 9.0 A B M C M

Ø 16.50 ± .005
RADIUS OF SCRIBE = 0.030
MAX DEPTH OF SCRIBE 1/16IN

NOTES: UNLESS OTHERWISE SPECIFIED

- ALL DIMENSIONS IN INCHES
- DIMENSIONS AND TOLERANCING PER ASME Y14.5M-1994
- SURFACE TEXTURE PER ANSI/ASME B 46.1-1985
- REMOVE ALL BURRS AND BREAK SHARP EDGES TO A MAXIMUM OF .015
- ALL INSIDE CORNERS TO BE .015 RADIUS MAX
- COUNTERSINK 82 DEGREES ALL TAPPED HOLES TO MAJOR DIAMETER
- COUNTERSINK 82 DEGREES APPROXIMATELY .015 DEEP ALL DRILLED HOLES
- PARTS TO BE THOROUGHLY CLEANED TO REMOVE ALL OIL, GREASE, DIRT AND CHIPS
- PART NUMBER (DRAWING NO. PLUS DASH NO. PLUS SERIAL NO.) TO BE CLEARLY MARKED ON THE PART ITSELF.
- ALL FABRICATION, CLEANING, AND HANDLING MAINTAINED TO HYTEC SPECIFICATION: LIGO-TS-03 CATEGORY 1.
- NO SULFUR BASED CUTTING FLUIDS ALLOWED. APPROVED STAINLESS STEEL MACHINE LUBRICANT: RELTON A-9, RELTON

MATL: 304 SST
WEIGHT: 394.2 lbs.

PARTS LIST			
UNLESS OTHERWISE SPECIFIED: DIMENSIONS ARE IN INCHES -TOLERANCES- DECIMALS ANGULAR = +/- 30' .X = +/- .1 .XX = +/- .03 .XXX = +/- .010 SURFACE FINISH = 250	CAD GENERATED DRAWING, DO NOT MANUALLY UPDATE DO NOT SCALE DRAWING		HYTEC, INC TITLE LIGO HAM ISOLATION STACK LEG ELEMENT #1
	FINISH ALL MACHINED SURFACES 64 RMS	SIGNATURE DESIGNED ROGER L. SMITH DRAWN ROGER L. SMITH CHECKED HARRY SALAZAR ENGR. T. THOMPSON APPROVED T. THOMPSON	
PART NO. D972712-1	DWG. NO. D972712	SIZE D	SHEET NO. 1 of 1
	SCALE 1/2	REVISION B	

8 7 6 5 4 3 2 1