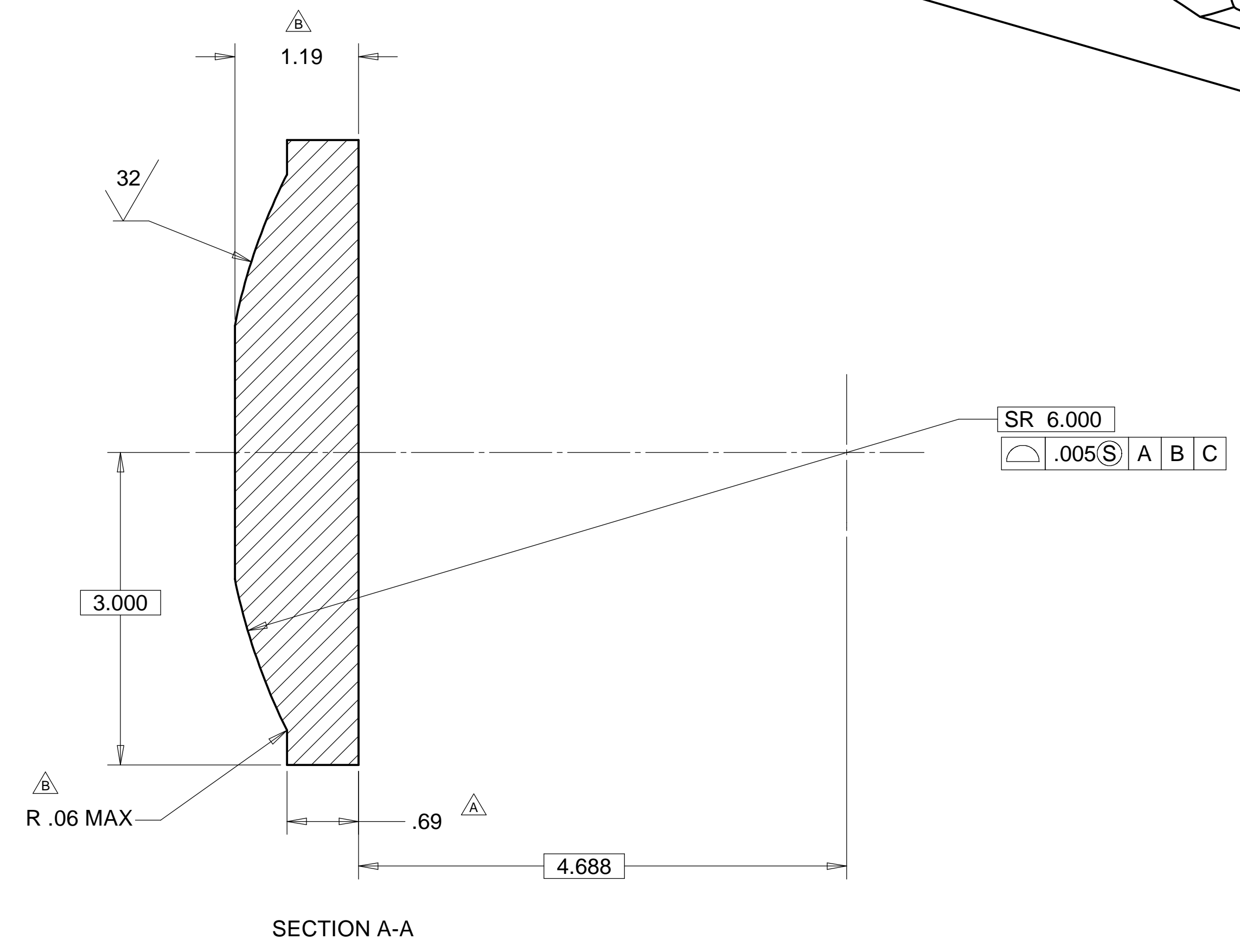
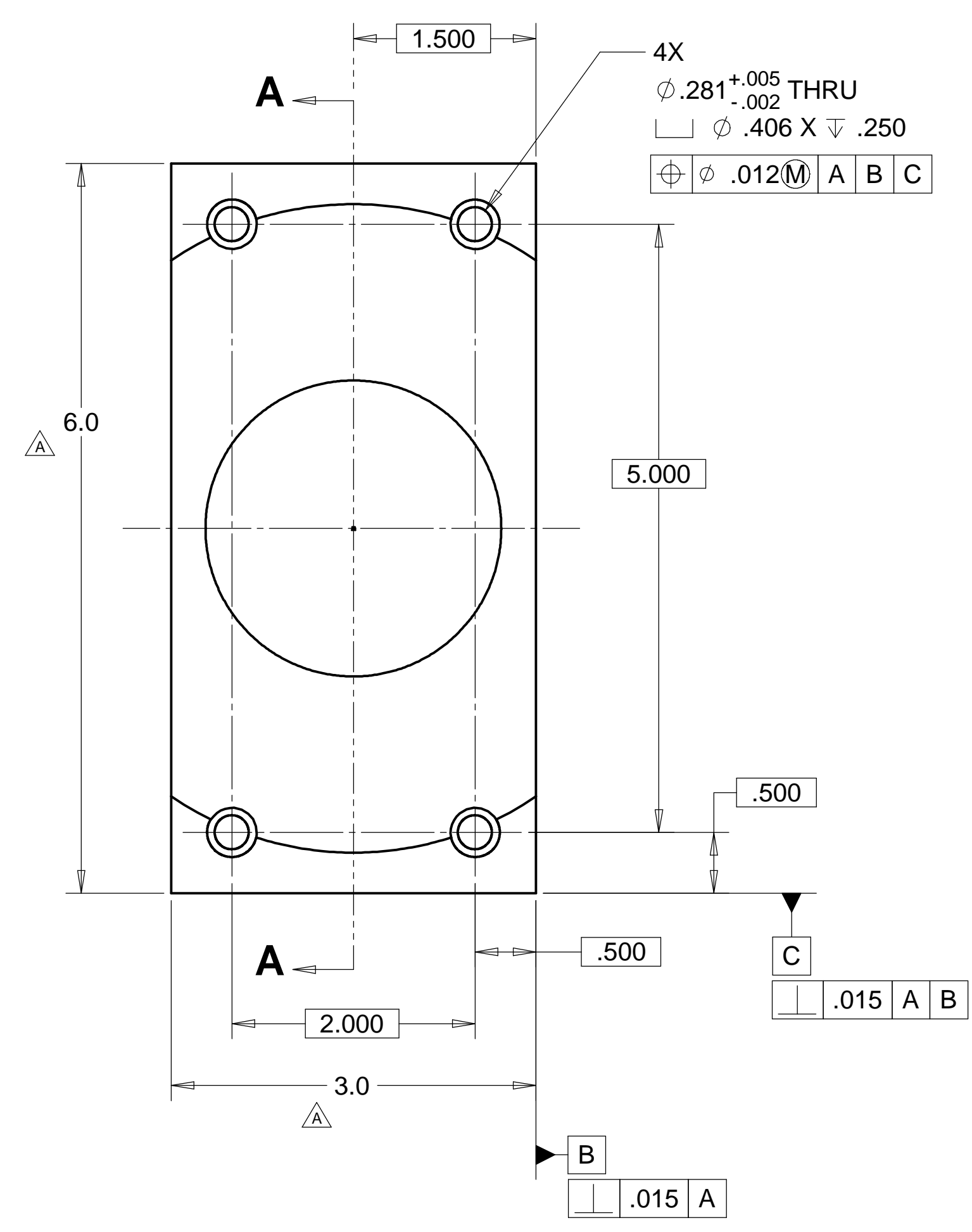
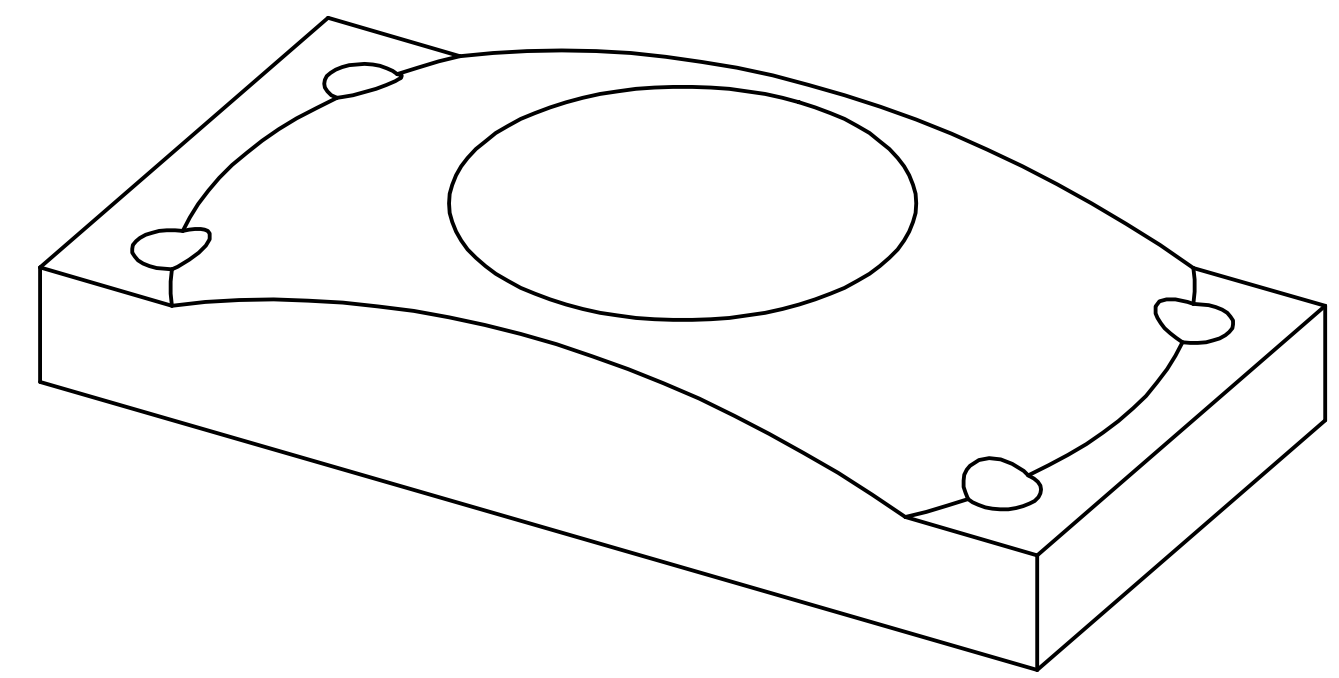
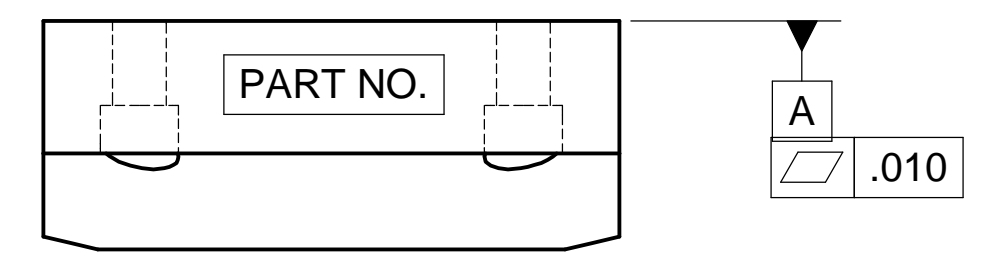


REVISIONS			
REV.	DESCRIPTION	DATE	APPROVED
A	SEE ECN# D972615-A FOR CHANGE LIST	11-03-97	T. THOMPSON
B	SEE ECN# D972615-B FOR CHANGE LIST	01-16-98	T. THOMPSON



NOTES: UNLESS OTHERWISE SPECIFIED

1. ALL DIMENSIONS IN INCHES
2. DIMENSIONS AND TOLERANCING PER ASME Y14.5M-1994
3. SURFACE TEXTURE PER ANSI/ASME B 46.1-1985
4. REMOVE ALL BURRS AND BREAK SHARP EDGES TO A MAXIMUM OF .015
5. ALL INSIDE CORNERS TO BE .015 RADIUS MAX
6. COUNTERSINK 82 DEGREES ALL TAPPED HOLES TO MAJOR DIAMETER
7. COUNTERSINK 82 DEGREES APPROXIMATELY .015 DEEP ALL DRILLED HOLES
8. PARTS TO BE THOROUGHLY CLEANED TO REMOVE ALL OIL, GREASE, DIRT AND CHIPS
9. PART NUMBER (DRAWING NO. PLUS DASH NO. PLUS SERIAL NO.) TO BE CLEARLY MARKED ON THE PART ITSELF.

MATL: LOW CARBON STEEL
 COATING: HI-T LUBE, MAGNAPLATE
 WEIGHT: 5.1 lbs.

PARTS LIST			
UNLESS OTHERWISE SPECIFIED: DIMENSIONS ARE IN INCHES -TOLERANCES-		CAD GENERATED DRAWING, DO NOT MANUALLY UPDATE DO NOT SCALE DRAWING	
DECIMALS	ANGULAR = +/- .30'	<p style="text-align: center;">HYTEC, INC</p> <p style="text-align: center;">TITLE</p> <p style="text-align: center;">LIGO HAM SPHERICAL BEARING</p>	
.X = +/- .1			
.XX = +/- .03	SURFACE FINISH = 250		
.XXX = +/- .010		FINISH	DATE
DESIGNED	ROGER L. SMITH	5-28-97	
DRAWN	ROGER L. SMITH	7-10-97	
CHECKED	HARRY SALAZAR	7-10-97	
ENGR.	T. THOMPSON	7-10-97	
APPROVED	T. THOMPSON	7-10-97	
PART NO. D972615-1		DWG. NO. D972615	SCALE 1/1
		SIZE D	SHEET NO. 1 of 1
		REVISION B	