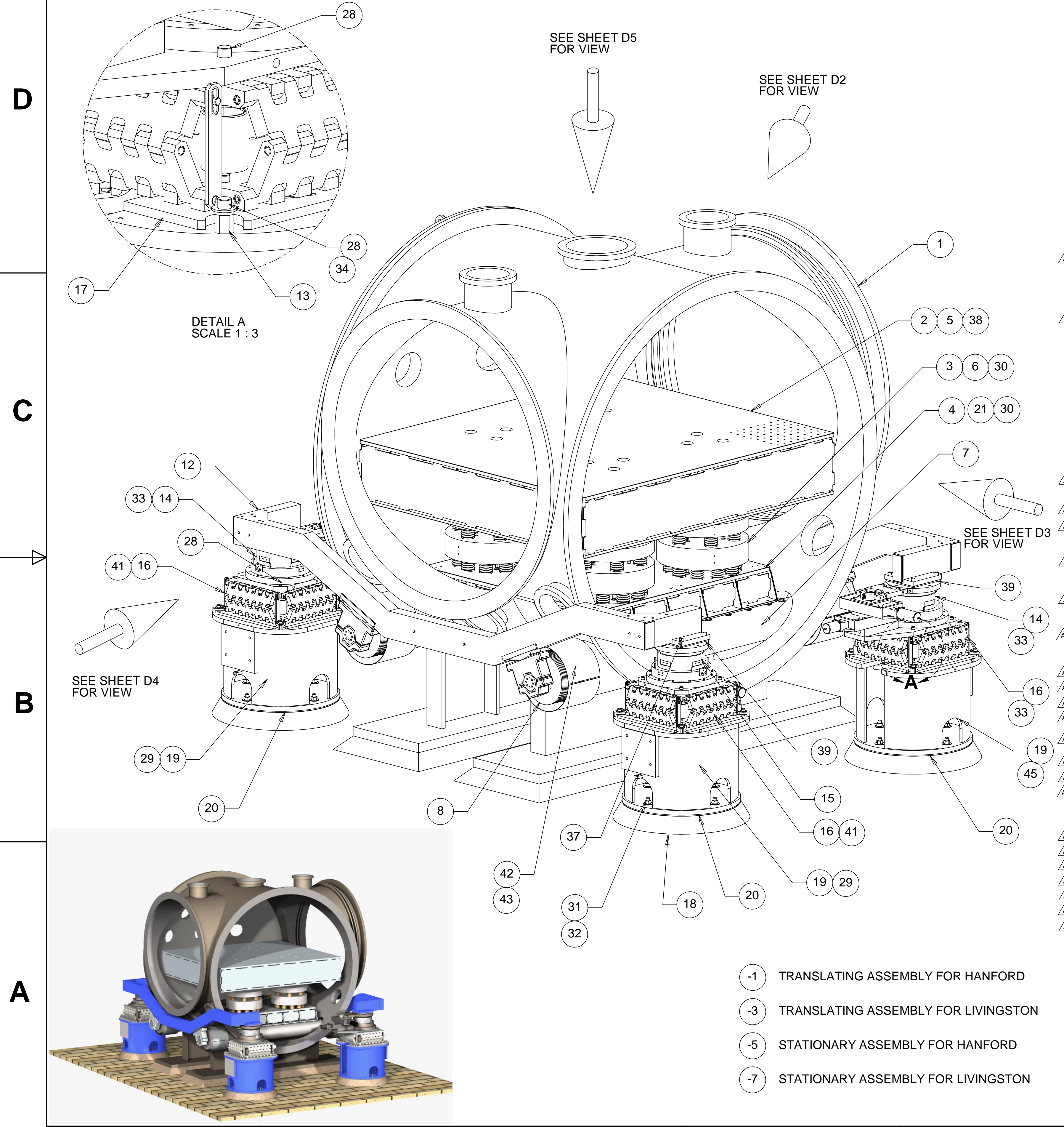


		REVISIONS		DATE	APPROVED
REV	DESCRIPTION				
A	SEE ECN# D972501-A FOR CHANGE LIST			01/21/99	T. THOMPSON
B	SEE ECN# D972501-B FOR CHANGE LIST			04/26/99	T. THOMPSON



ITEM NO.	QTY.	QTY.	QTY.	QTY.	PART NO.	DESCRIPTION
1	1	1	1	1	PSI V049-4-002	HAM CHAMBER
2	1	1	1	1	D972710-1	OPTICAL TABLE
3	4	4	4	4	D972701-1	ISOLATION STACK LEG ASSY
4	1	1	1	1	D972711-1	SUPPORT TABLE WELDMENT
5	12	12	12	12	D972715-1	ISOLATION STACK LEG SCREW #1
6	12	12	12	12	D972715-5	ISOLATION STACK SAFETY PIN
7	2	2	2	2	D972610-1	SUPPORT TUBE WELDMENT
8	4	4	4	4	D972611-1	EXPANSION BELLOW S
9	4	4	4	4	D972614-1	SUPPORT TUBE MOUNTING CAP
10	4	4	4	4	D972613-1	SUPPORT TUBE MOUNTING BASE
11	4	4	4	4	D972615-1	SPHERICAL BEARING
12	2	2	2	2	D972612-1	CROSSBEAM WELDMENT
13	16	16	16	16	D972418-1	PIER PLATE ADAPTOR MOUNTING CLAMP
14	2	2	0	0	D972102-1	COARSE X-Y DRIVEN TRANSLATION ASSY
15	2	2	2	2	D972103-1	COARSE X-Y FLOATING TRANSLATION ASSY
16	4	4	0	0	D972104-3	SCISSORS TABLE ASSY, TRANSLATING
17	4	4	4	4	D972904-1	PIER PLATE ADAPTER
18	AR	AR	AR	AR	1107	ADVANTAGE GROUT, DAYTON SUPERIOR
19	4	0	4	0	D972609-1	SUPPORT PIER (HANFORD)
20	4	4	4	4	D972126-1	PIER LEVELING & GROUT PLATE
21	18	18	18	18		SOC HD SST SCREW, 3/8-24 UNF-2A X 1.25 lg Ag PLATED
22	4	4	4	4	MDC # 191025	COPPER GASKET
23	AR	AR	AR	AR		USE PSI SUPPLIED HARDWARE
24	4	4	4	4	MDC # 191017	COPPER GASKET
25	64	64	64	64		SOC HD SST SCREW, 5/16-24 UNF-2A X 1.5 lg Ag PLATED
26	16	16	16	16		SOC HD SST SCREW, 1/2-20 UNF-2A X 3.0 LG
27	16	16	16	16		SOC HD SST SCREW, 1/2-20 UNF-2A X 3.50 LG
28	32	32	32	32		SOC HD SST SCREW, 1/2-13 UNC-2A X 1.75 LG
29	0	4	0	4	D972609-3	SUPPORT PIER (LIVINGSTON)
30	30	30	30	30	W FV-38-.75-.089	VENTED WASHER,U-C COMPONENTS, INC.
31	16	16	16	16	96802004	HILTI THREADED ANCHOR
					00256702	HILTI ADHESIVE CAPSULE
32	16	16	16	16		FLANGED HEX NUT, 3/4-10 UNC-2B
33	0	0	2	2	D972102-3	COARSE X-Y STATIONARY TRANS. ASSY
34	16	16	16	16	318-12-A-01	BARNHILL HARD HVY DTY FLAT W ASHER OR EQUIV.
35	32	32	32	32	D972146-1	SCISSORS TABLE MOUNTING CLAMP
36	32	32	32	32		SOC HD SST SCREW, 1/2-13 UNC-2A X 3.5 LG
37	16	16	16	16		SOC HD SST SCREW, 1/2-13 UNC-2A X 2.25 LG
38	12	12	12	12	D972716-1	CUSTOM VENTED W ASHER
39	4	4	4	4	D972142-1	SPHERICAL MOUNTING PAD
40	16	16	16	16	CL-148	SPHERICAL W ASHER, 1/2, CARR-LANE OR EQUIV.
41	0	0	4	4	D972104-5	SCISSORS TABLE ASSY, STATIONARY
42	4	4	4	4		BELLOW S GUARD SUPPLIED BY USER
43	4	4	4	4		BELLOW S GUARD CLAMP SUPPLIED BY USER
DASH #	-1	-3	-5	-7		

- ① TRANSLATING ASSEMBLY FOR HANFORD
- ③ TRANSLATING ASSEMBLY FOR LIVINGSTON
- ⑤ STATIONARY ASSEMBLY FOR HANFORD
- ⑦ STATIONARY ASSEMBLY FOR LIVINGSTON

PARTS LIST				UNLESS OTHERWISE SPECIFIED: DIMENSIONS ARE IN INCHES -TOLERANCES-		CAD GENERATED DRAWING, DO NOT MANUALLY UPDATE DO NOT SCALE DRAWING		HYTEC, INC	
DECIMALS .XX = +/- .03 .XXX = +/- .010		ANGULAR = +/- .30° SURFACE FINISH = 250		SIGNATURE		DATE		TITLE	
FINISH		DESIGNED		ROGER L. SMITH		5-28-97		LIGO HAM TOP ASSEMBLY	
PART NO.		DRAWN		ROGER L. SMITH		04-08-98		DWG. NO.	
D972501-1,3,5 & 7		CHECKED		HARRY SALAZAR		04-29-98		D972501	
		ENGR.		T. THOMPSON		05-04-98		SIZE	
		APPROVED		T. THOMPSON		05-04-98		D 1 of 5	
		SCALE		NONE				REVISION	
								B	

8

7

6

5

4

3

2

1

REVISIONS		DATE	APPROVED
REV	DESCRIPTION		
A	SEE ECN# D972501-A FOR CHANGE LIST	01/21/99	T. THOMPSON
B	SEE ECN# D972501-B FOR CHANGE LIST	04/26/99	T. THOMPSON

D

D

C

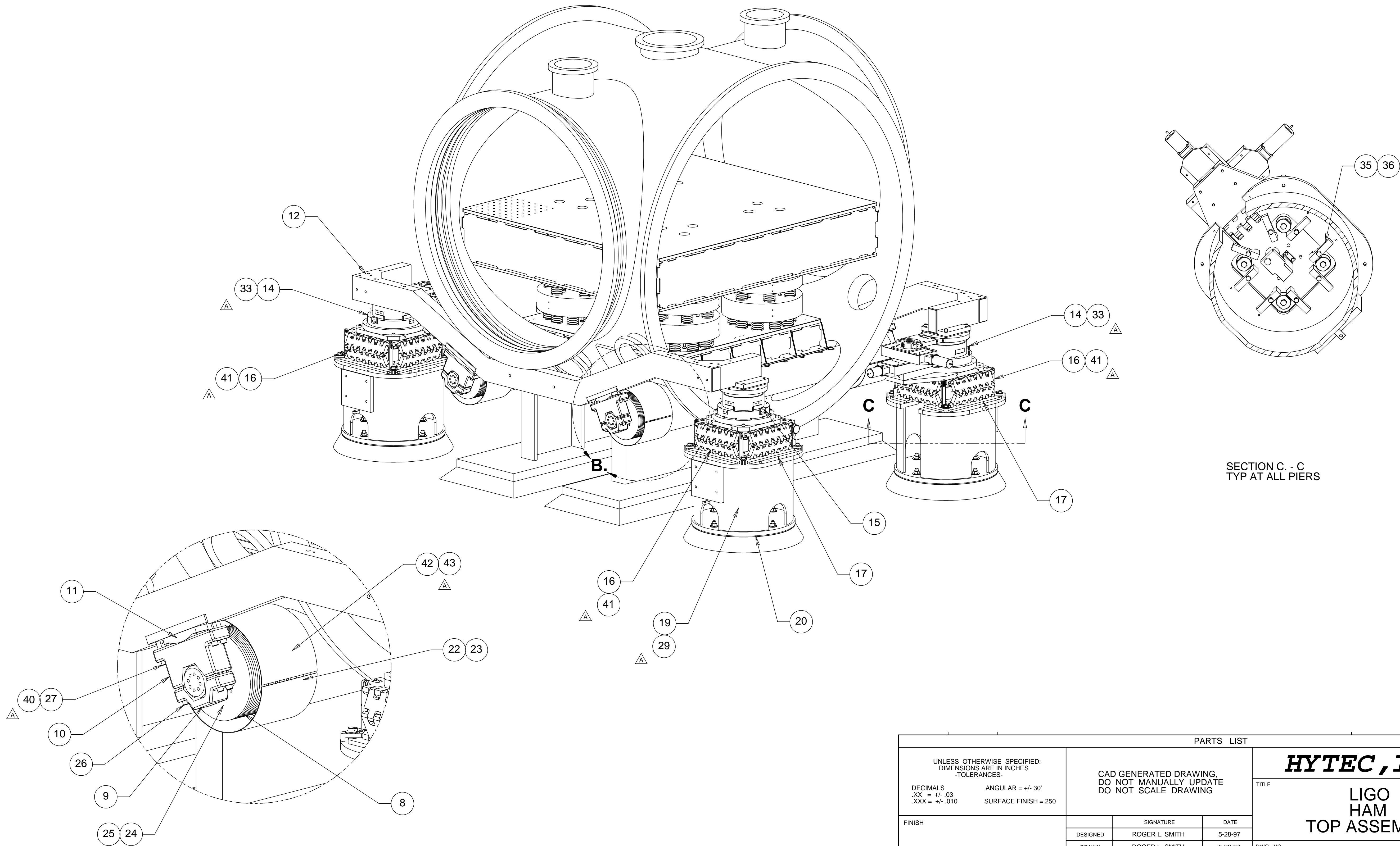
C

B

B

A

A



SECTION C - C
TYP AT ALL PIERS

DETAIL B
TYP 4 PLACES
SCALE 1:6

PARTS LIST			
UNLESS OTHERWISE SPECIFIED: DIMENSIONS ARE IN INCHES -TOLERANCES-		CAD GENERATED DRAWING. DO NOT MANUALLY UPDATE DO NOT SCALE DRAWING	
DECIMALS	ANGULAR = +/- .30°	<p>HYTEC, INC</p> <p>TITLE LIGO HAM TOP ASSEMBLY</p> <p>DWG. NO. D972501 SIZE D SHEET NO. 2 of 5</p>	
.XX = +/- .03	SURFACE FINISH = 250		
.XXX = +/- .010			
FINISH			
PART NO.	D972501-1	SIGNATURE	DATE
		DESIGNED ROGER L. SMITH	5-28-97
		DRAWN ROGER L. SMITH	5-28-97
		CHECKED HARRY SALAZAR	5-12-98
		ENGR. T. THOMPSON	5-12-98
		APPROVED T. THOMPSON	5-12-98
		SCALE	NONE
		REVISION	B

8

7

6

5

4

3

2

1

8

7

6

5

4

3

2

1

REVISIONS			
REV	DESCRIPTION	DATE	APPROVED
A	SEE ECN# D972501-A FOR CHANGE LIST	01/21/99	T. THOMPSON
B	SEE ECN# D972501-B FOR CHANGE LIST	04/26/99	T. THOMPSON

D

D

C

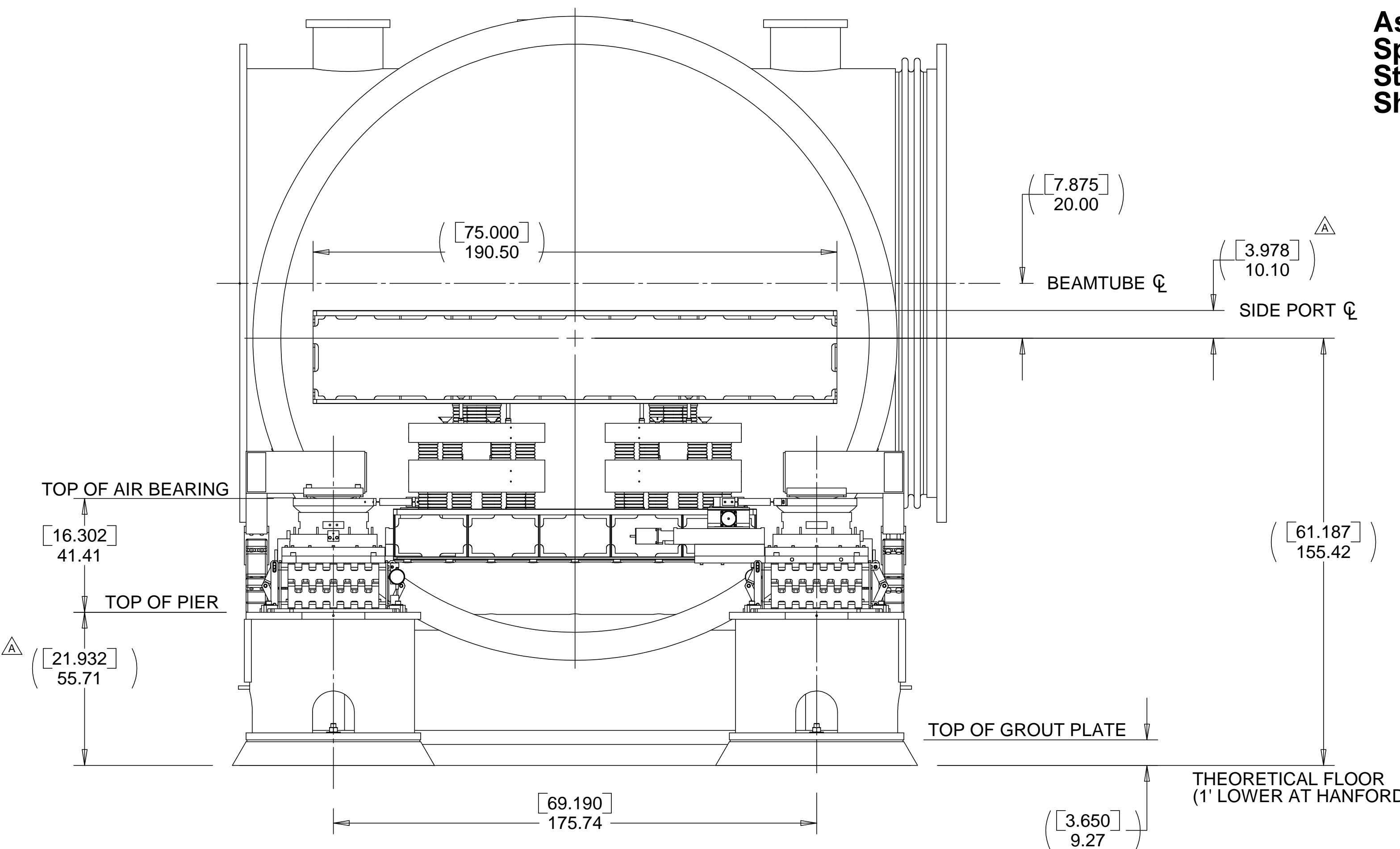
C

B

B

A

A



As Built Configuration 4/23/99
Spring Height = 2.516 inches
Stack Height = 15.288 inches
Shim Height = .275 inches

TOP OF AIR BEARING
 [16.302]
 41.41
 TOP OF PIER
 [21.932]
 55.71

TOP OF GROUT PLATE
 [61.187]
 155.42
 THEORETICAL FLOOR
 (1' LOWER AT HANFORD)
 [3.650]
 9.27

NOTE: LIVINGSTON CONFIGURATION SHOWN

IN
 CM

PARTS LIST			
UNLESS OTHERWISE SPECIFIED: DIMENSIONS ARE IN INCHES -TOLERANCES-	CAD GENERATED DRAWING, DO NOT MANUALLY UPDATE DO NOT SCALE DRAWING		HYTEC, INC TITLE LIGO HAM TOP ASSEMBLY
	DECIMALS .XX = +/- .03 .XXX = +/- .010	ANGULAR = +/- .30° SURFACE FINISH = 250	
FINISH	SIGNATURE	DATE	SCALE 1/12 REVISION B
	DESIGNED ROGER L. SMITH	5-28-97	
	DRAWN ROGER L. SMITH	5-28-97	
PART NO. D972501-1	CHECKED HARRY SALAZAR	6-6-97	
	ENGR. T. THOMPSON	7-10-97	
	APPROVED T. THOMPSON	7-10-97	

8

7

6

5

4

3

2

1

8

7

6

5

4

3

2

1

REVISIONS			
REV	DESCRIPTION	DATE	APPROVED
A	SEE ECN# D972501-A FOR CHANGE LIST	01/21/99	T. THOMPSON
B	SEE ECN# D972501-B FOR CHANGE LIST	04/26/99	T. THOMPSON

D

D

C

C

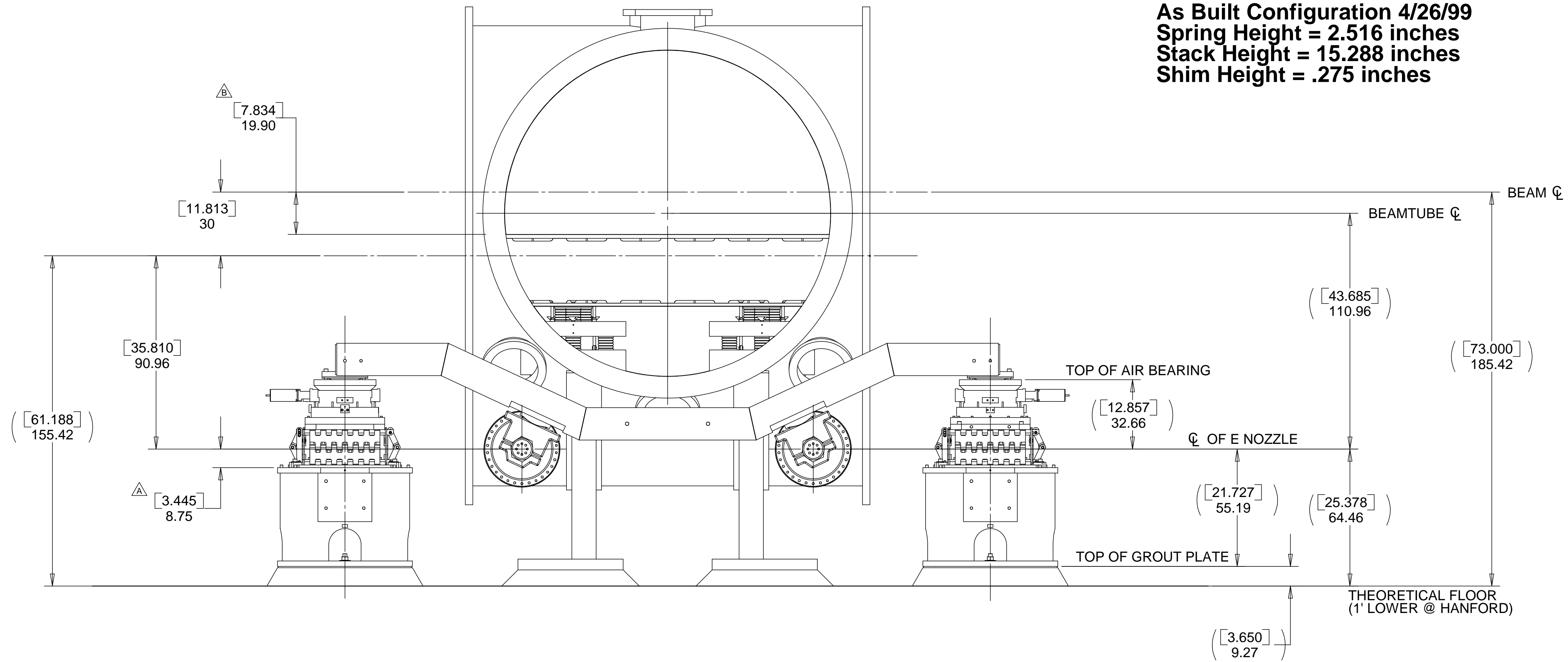
B

B

A

A

As Built Configuration 4/26/99
Spring Height = 2.516 inches
Stack Height = 15.288 inches
Shim Height = .275 inches



NOTE; LIVINGSTON CONFIGURATION SHOWN

IN
CM

PARTS LIST			
UNLESS OTHERWISE SPECIFIED: DIMENSIONS ARE IN INCHES -TOLERANCES-	DECIMALS	ANGULAR = +/- .30°	<p>HYTEC, INC</p> <p>TITLE</p> <p>LIGO HAM TOP ASSEMBLY</p>
	.XX = +/- .03	SURFACE FINISH = 250	
FINISH	SIGNATURE	DATE	<p>DWG. NO. D972501 SIZE D SHEET NO. 4 of 5</p>
	DESIGNED: ROGER L. SMITH	5-28-97	
	DRAWN: ROGER L. SMITH	5-28-97	
PART NO. D972501-1	CHECKED: HARRY SALAZAR	5-12-98	
	ENGR. T. THOMPSON	5-12-98	SCALE 1/12
	APPROVED: T. THOMPSON	5-12-98	REVISION B

8

7

6

5

4

3

2

1

8

7

6

5

4

3

2

1

REVISIONS		DATE	APPROVED
REV	DESCRIPTION		
A	SEE ECN# D972501-A FOR CHANGE LIST	01/21/99	T. THOMPSON
B	SEE ECN# D972501-B FOR CHANGE LIST	04/26/99	T. THOMPSON

D

D

C

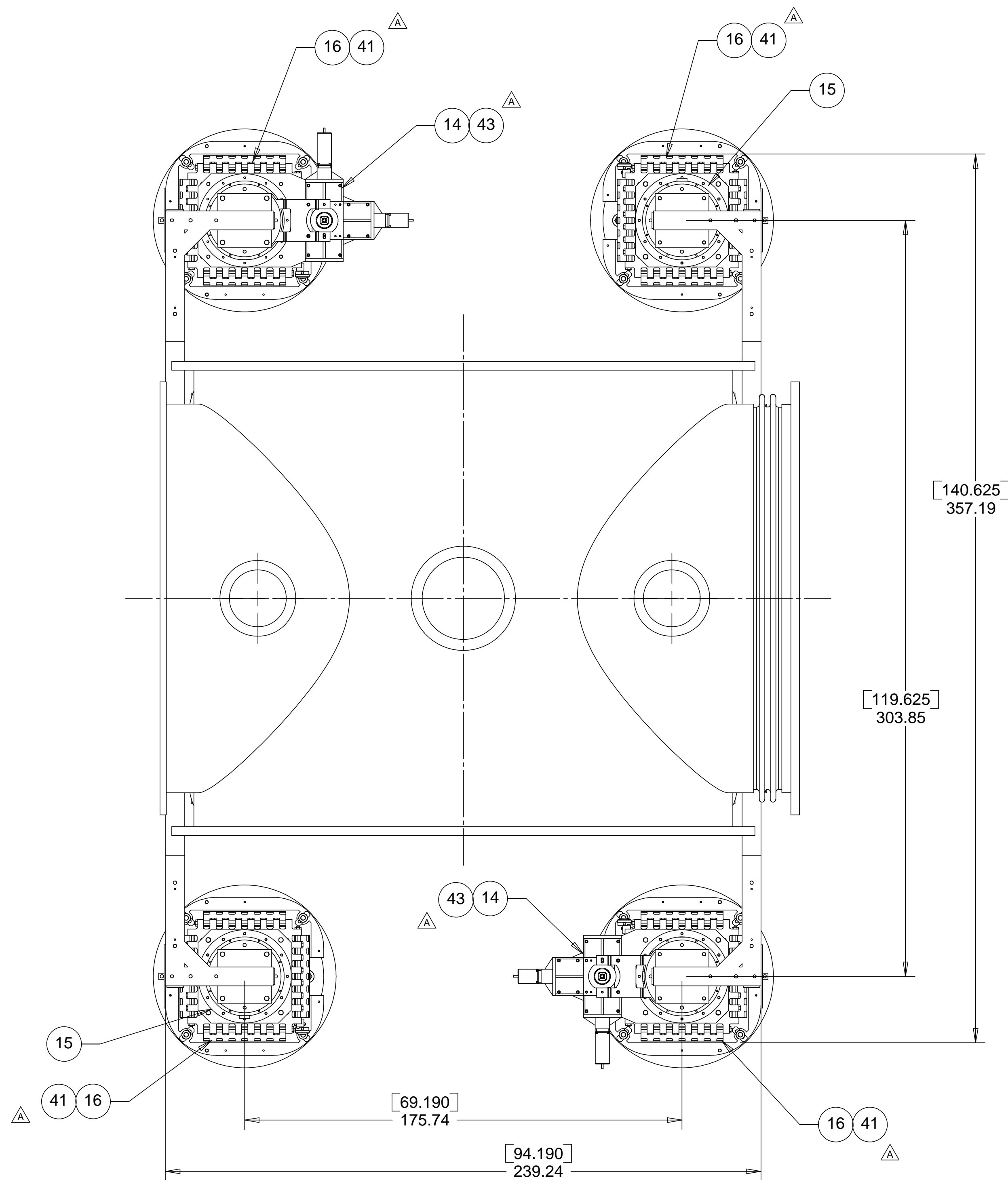
C

B

B

A

A



IN
CM

8

7

6

5

4

3

2

1

PARTS LIST			
UNLESS OTHERWISE SPECIFIED: DIMENSIONS ARE IN INCHES -TOLERANCES-		CAD GENERATED DRAWING, DO NOT MANUALLY UPDATE DO NOT SCALE DRAWING	
DECIMALS .XX = +/- .03 .XXX = +/- .010		ANGULAR = +/- .30° SURFACE FINISH = 250	
FINISH	SIGNATURE	DATE	TITLE
	ROGER L. SMITH	5-28-97	HYTEC, INC LIGO HAM TOP ASSEMBLY
	ROGER L. SMITH	5-28-97	
PART NO.	CHECKED	ENGR.	DWG. NO.
D972501-1	HARRY SALAZAR	T. THOMPSON	D972501
		T. THOMPSON	
	APPROVED	DATE	SIZE SHEET NO.
	T. THOMPSON	5-12-98	D 5 of 5
		5-12-98	SCALE 1/12
			REVISION B