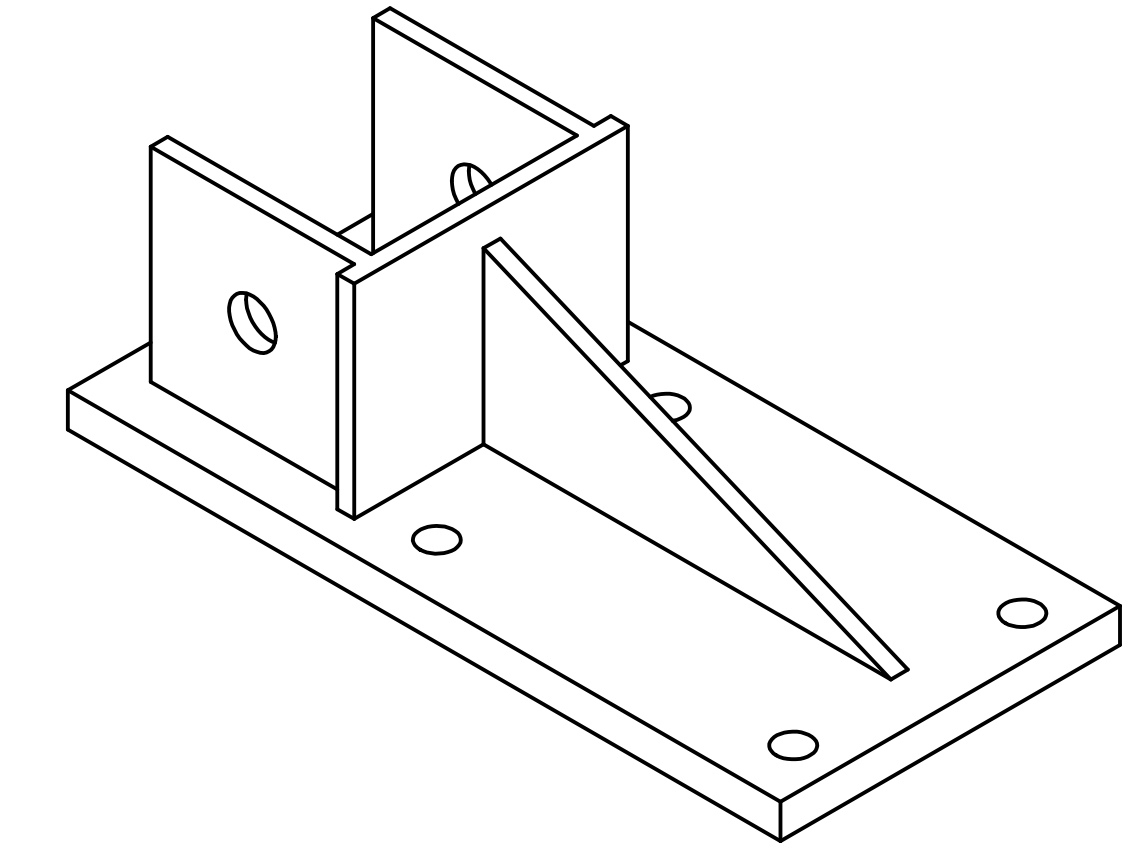
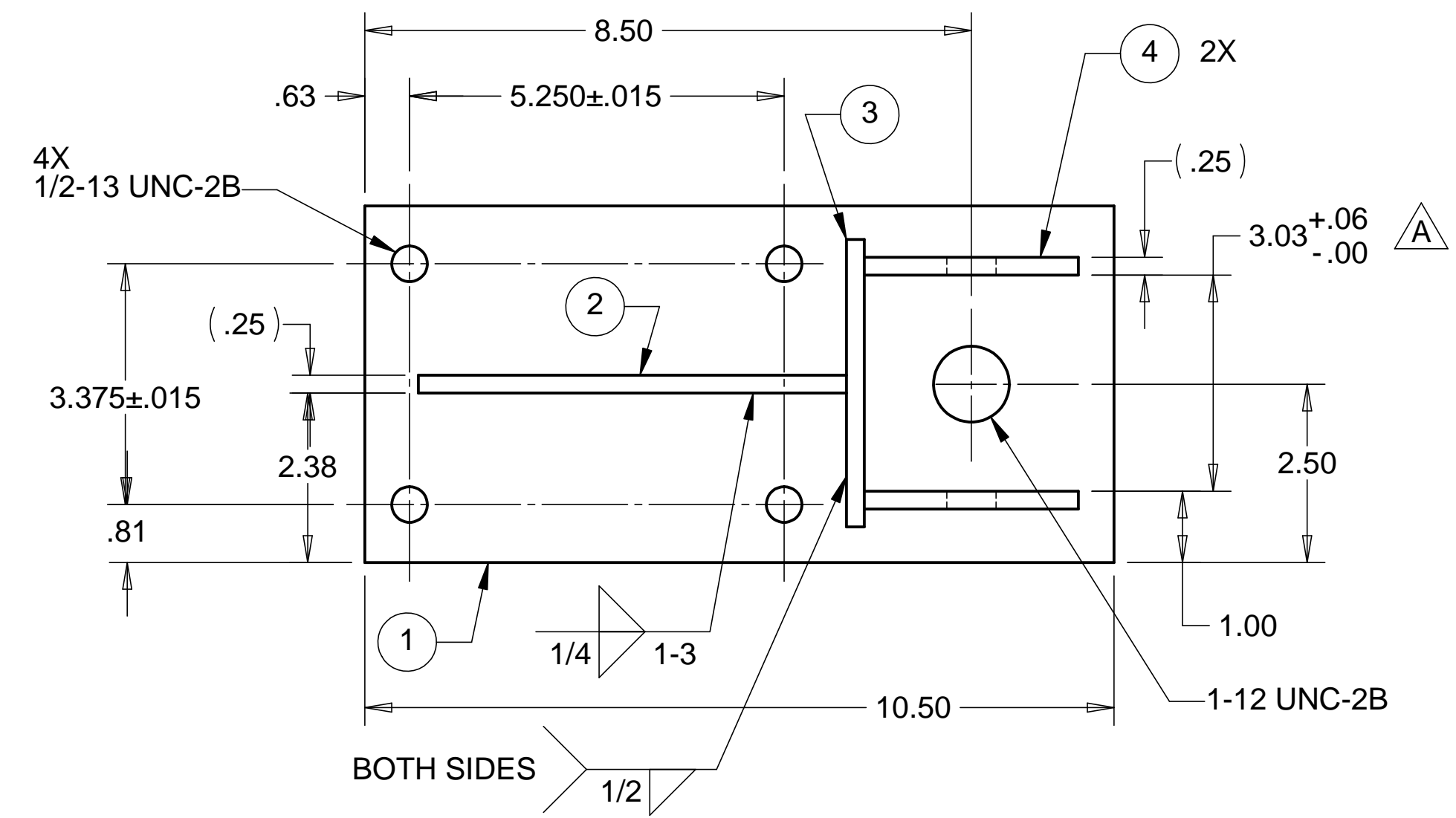


8 7 6 5 4 3 2 1

| REVISIONS | | | |
|-----------|--------------------------------|---------|----------|
| REV. | DESCRIPTION | DATE | APPROVED |
| A | ASSORTED DIMS, AND PAINT SPEC. | 3-16-98 | WKM |

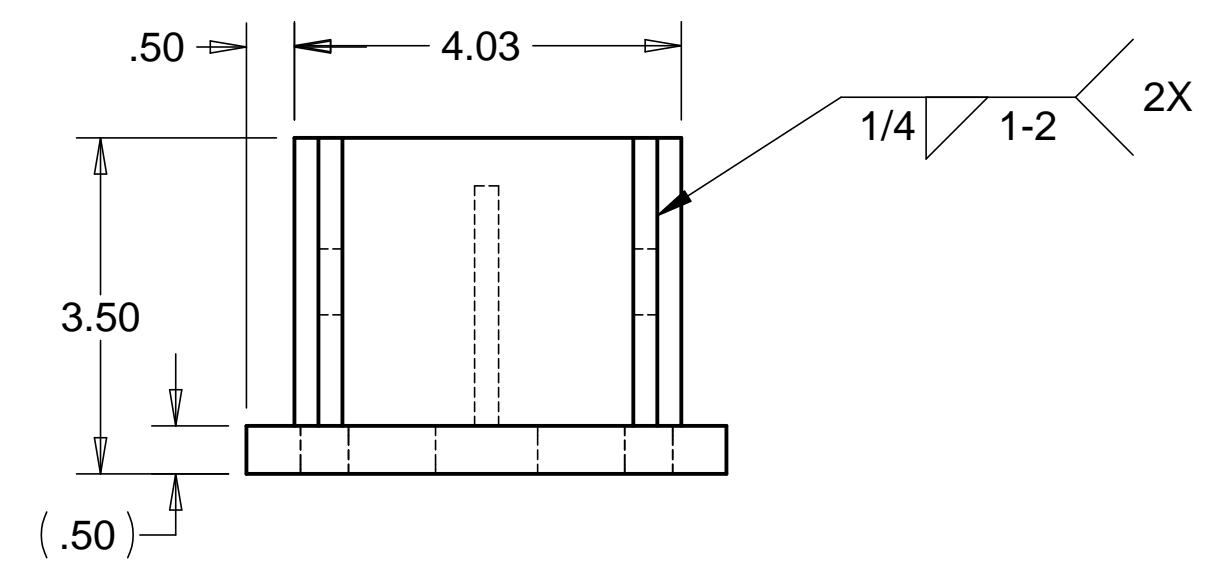
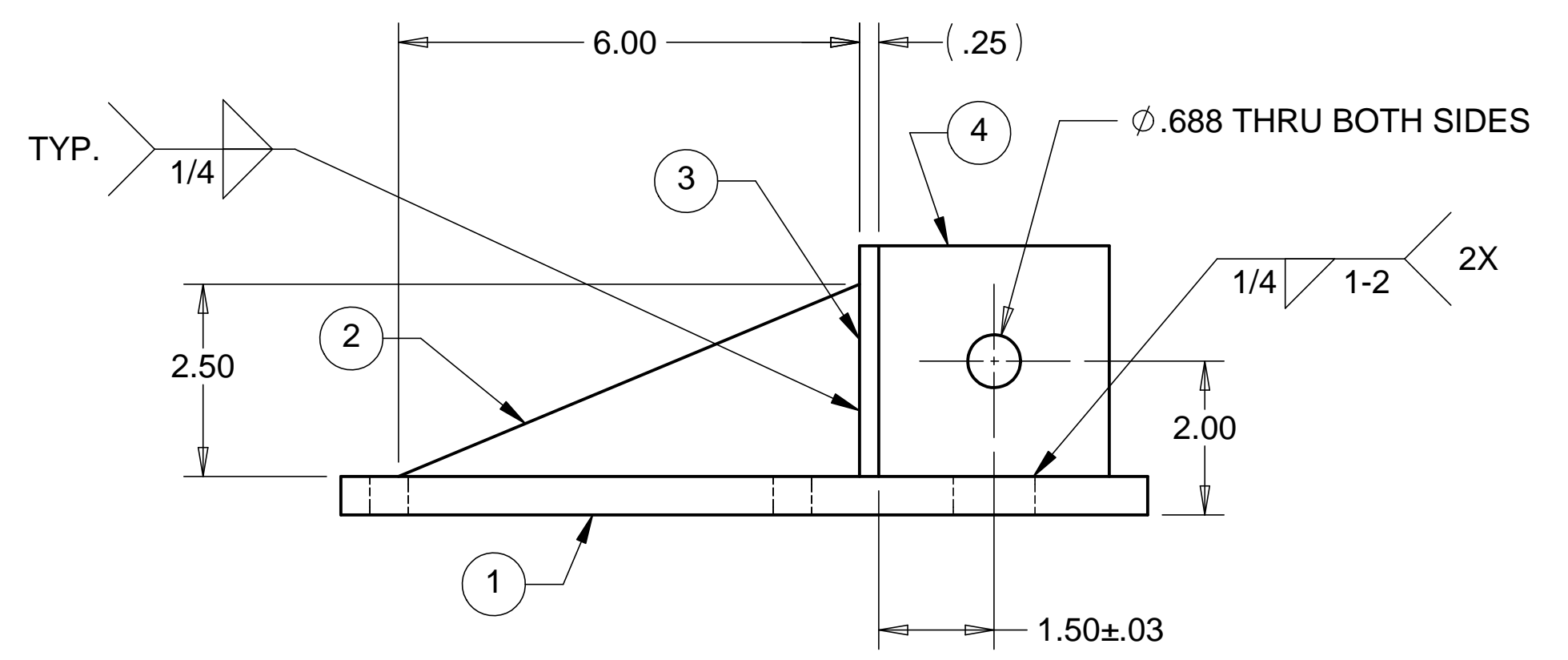
D

D



C

C



B

B

NOTES: UNLESS OTHERWISE SPECIFIED

1. ALL DIMENSIONS IN INCHES
2. DIMENSIONS AND TOLERANCING PER ASME Y14.5M-1994
3. SURFACE TEXTURE PER ANSI/ASME B 46.1-1985
4. REMOVE ALL BURRS AND BREAK SHARP EDGES TO A MAXIMUM OF .015
5. ALL INSIDE CORNERS TO BE .015 RADIUS MAX
6. COUNTERSINK 82 DEGREES ALL TAPPED HOLES TO MAJOR DIAMETER
7. COUNTERSINK 82 DEGREES APPROXIMATELY .015 DEEP ALL DRILLED HOLES
8. PARTS TO BE THOROUGHLY CLEANED TO REMOVE ALL OIL, GREASE, DIRT AND CHIPS
9. PART NUMBER (DRAWING NO. PLUS DASH NO. PLUS SERIAL NO.) TO BE CLEARLY MARKED ON THE PART ITSELF.
10. PART WEIGHS 10 Lbs.
11. PRIMER (ALL VISIBLE SURFACES): SHERMAN WILLIAMS INDUSTRIAL WASH PRIMER PG062.
12. PAINT (ALL VISIBLE SURFACES): SHERMAN WILLIAMS POLANE T POLYURETHANE COLOR BASIN, COLOR #F63TXL-4054-4352 FLAT.

| ITEM NO. | QTY. | DESCRIPTION | MATERIAL |
|----------|------|----------------|------------|
| 1 | 1 | 1/2" THK PLATE | 1010 STEEL |
| 2 | 1 | 1/4" THK PLATE | 1010 STEEL |
| 3 | 1 | 1/4" THK PLATE | 1010 STEEL |
| 4 | 2 | 1/4" THK PLATE | 1010 STEEL |

PARTS LIST

| | | | | | |
|-------------------------------------------------------------------------|--------------------------------------------|--------------------------------------------------------------------------|---------|---------------------------------------------------------------------------------------------------------------------------------------|----------------|
| UNLESS OTHERWISE SPECIFIED: DIMENSIONS ARE IN INCHES -TOLERANCES- | | CAD GENERATED DRAWING, DO NOT MANUALLY UPDATE DO NOT SCALE DRAWING | | HYTEC, INC TITLE BSC ROLLER SYSTEM ADJUSTABLE CASTOR BASEPLATE WELDMENT | |
| DECIMALS .XX = +/- .06 .XXX = +/- .010 | ANGULAR = +/- .30' SURFACE FINISH = 250 | SIGNATURE | DATE | | |
| FINISH | | DESIGNED W. K. MILLER | 2/5/98 | DWG. NO. | SIZE SHEET NO. |
| | | DRAWN W. K. MILLER | 2/5/98 | D972440 | D 1 of 1 |
| PART NO. | | CHECKED HARRY SALAZAR | 3-16-98 | | |
| D972440-1 | | ENGR. T. THOMPSON | 3-16-98 | | |
| | | APPROVED T. THOMPSON | 3-16-98 | SCALE 1/2 | REVISION A |

8 7 6 5 4 3 2 1

A

A