

8                      7                      6                      5                      4                      3                      2                      1

REVISIONS			
REV.	DESCRIPTION	DATE	APPROVED

D

D

C

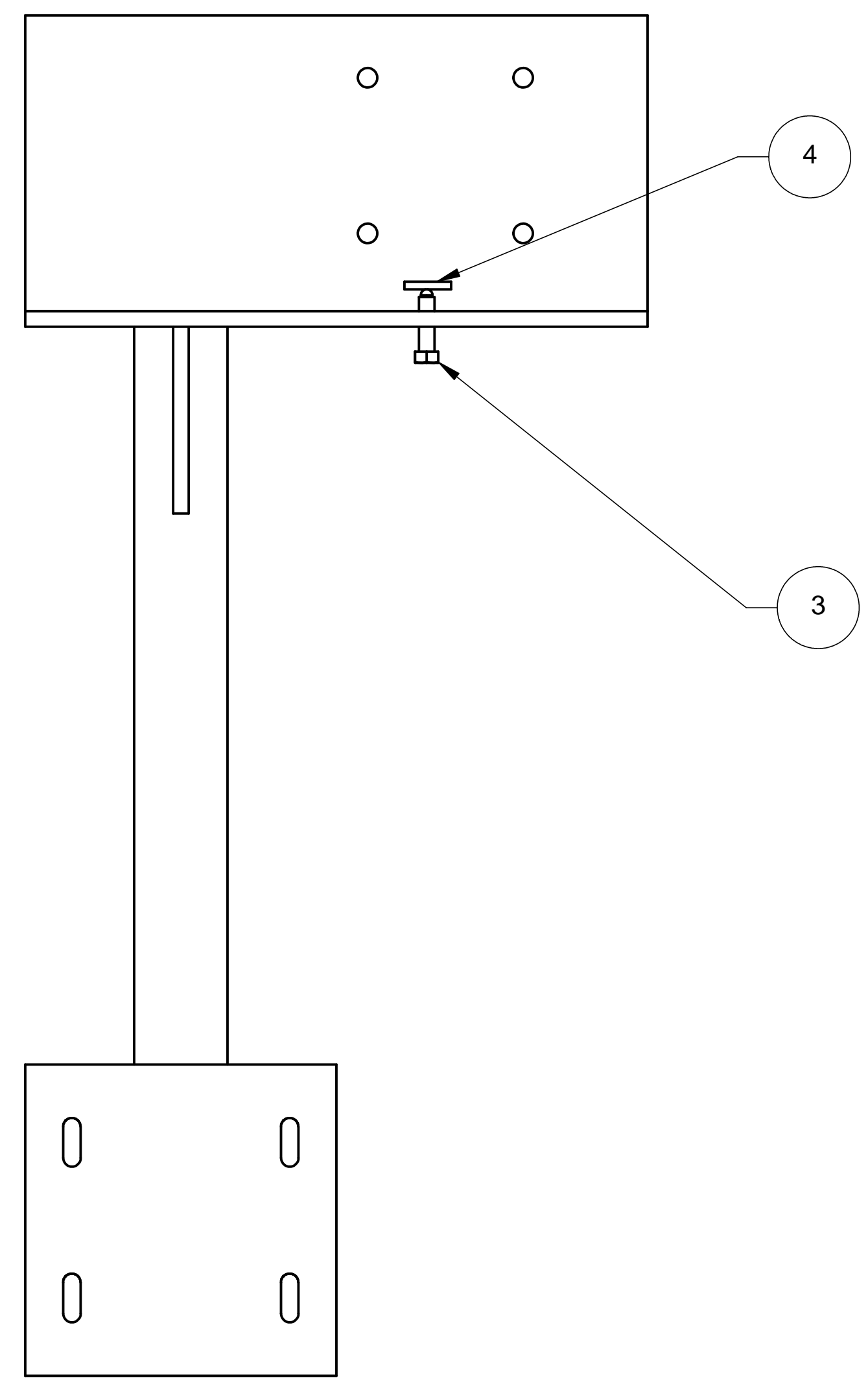
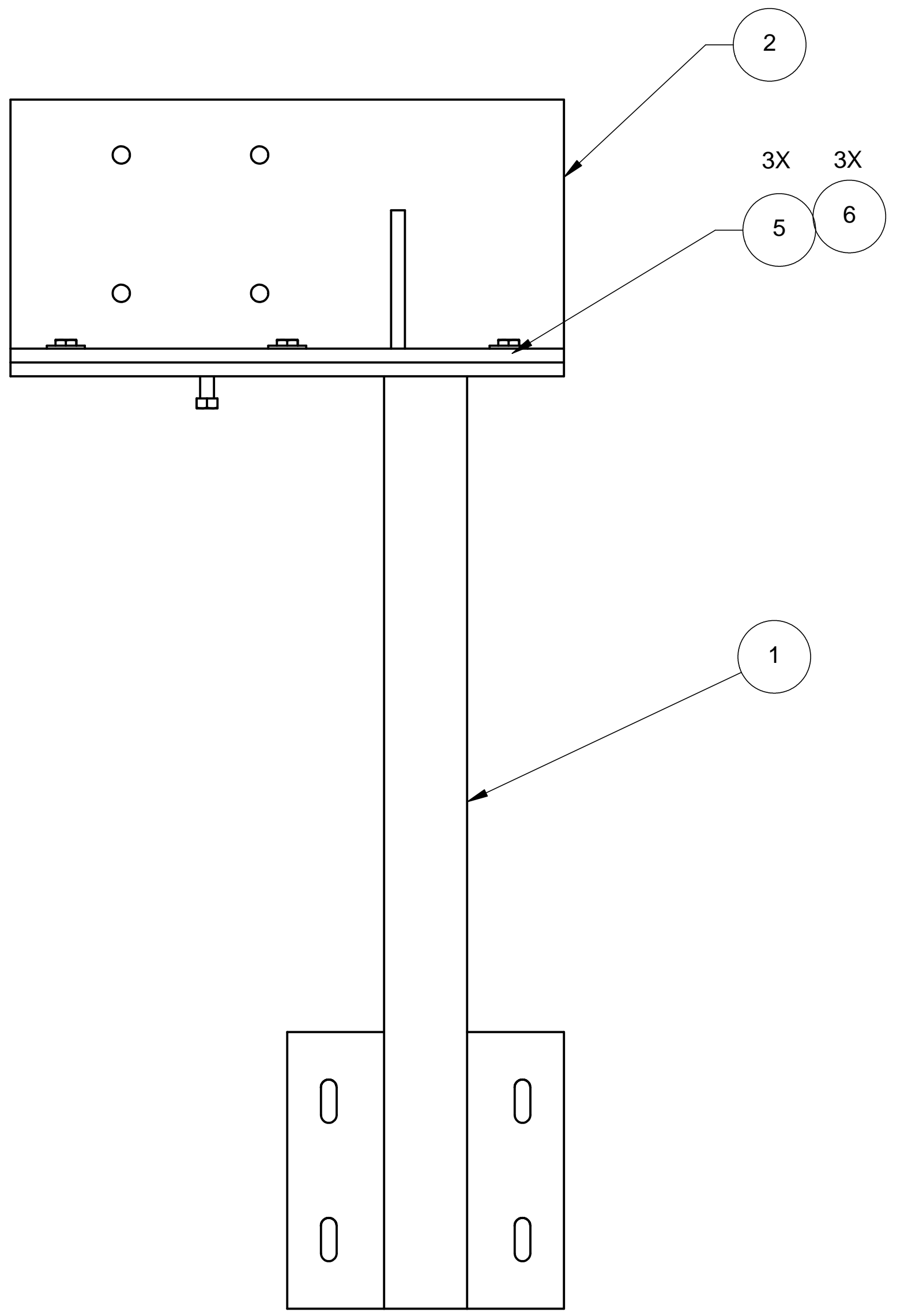
C

B

B

A

A



ITEM NO.	QTY.	PART NO.	DESCRIPTION
1	1	D972437-1	BSC SUPPORT BRACKET, RIGHT SIDE
2	1	D972438-1	BSC SUPPORT BRACKET, RIGHT SIDE ANGLE PLATE
3	1	D972927-1	HARD SHIM
4	1	D972928-1	BALL SCREW ADJUSTER
5	3	STD HARDWARE	SCREW, HEX HD .500-13 UNC-2A X 1.00 LG
6	3	STD HARDWARE	WASHER, REGULAR .500 DIA.

UNLESS OTHERWISE SPECIFIED: DIMENSIONS ARE IN INCHES -TOLERANCES-		CAD GENERATED DRAWING, DO NOT MANUALLY UPDATE DO NOT SCALE DRAWING		<b>HYTEC, INC</b> TITLE <b>BSC SUPPORT BRACKET          RIGHT SIDE          SUB-ASSEMBLY</b>	
DECIMALS .X = +/- .1 .XX = +/- .03 .XXX = +/- .010	ANGULAR = +/- .30° SURFACE FINISH = 250	SIGNATURE	DATE		
FINISH		DESIGNED W. K. MILLER	2-1-98	DWG. NO.	SIZE
		DRAWN GERALD BUSTOS	2-1-98	D972389	D
PART NO. <b>D972389-1</b>		CHECKED HARRY SALAZAR	----	SHEET NO.	1 of 1
		ENGR. T. THOMPSON	----	SCALE	1/4
		APPROVED T. THOMPSON	----	REVISION	

8                      7                      6                      5                      4                      3                      2                      1