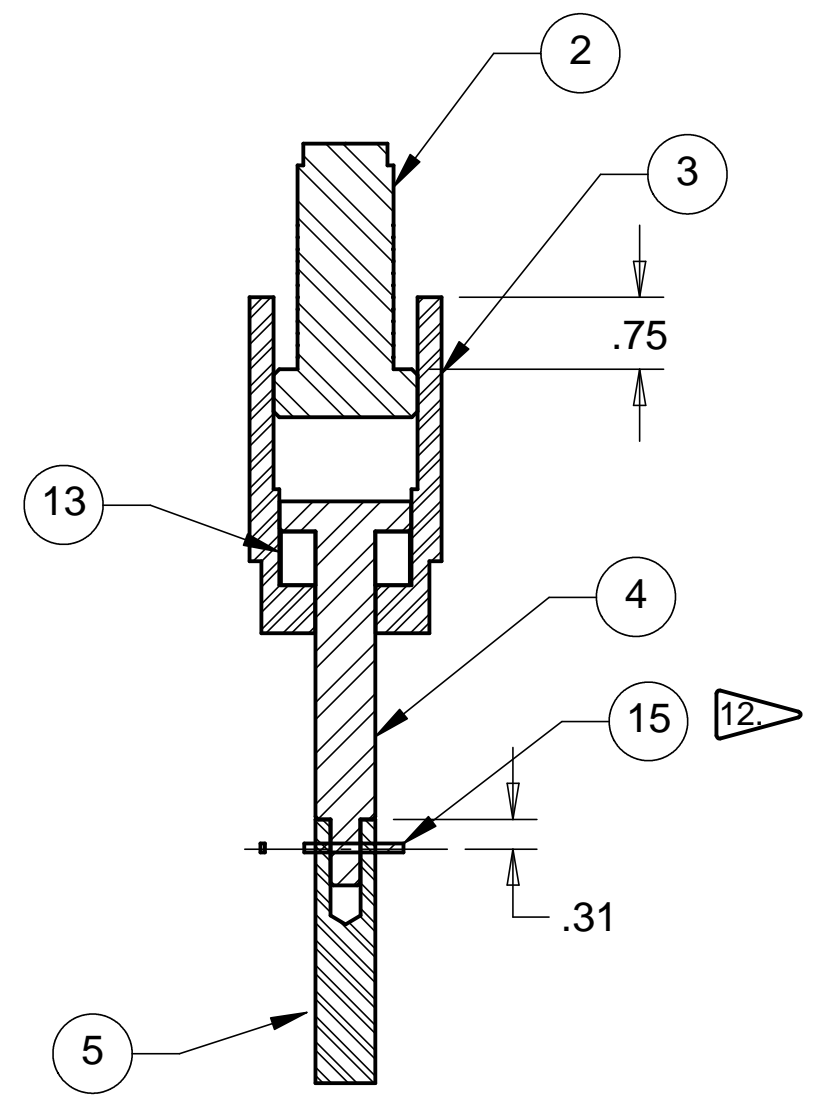
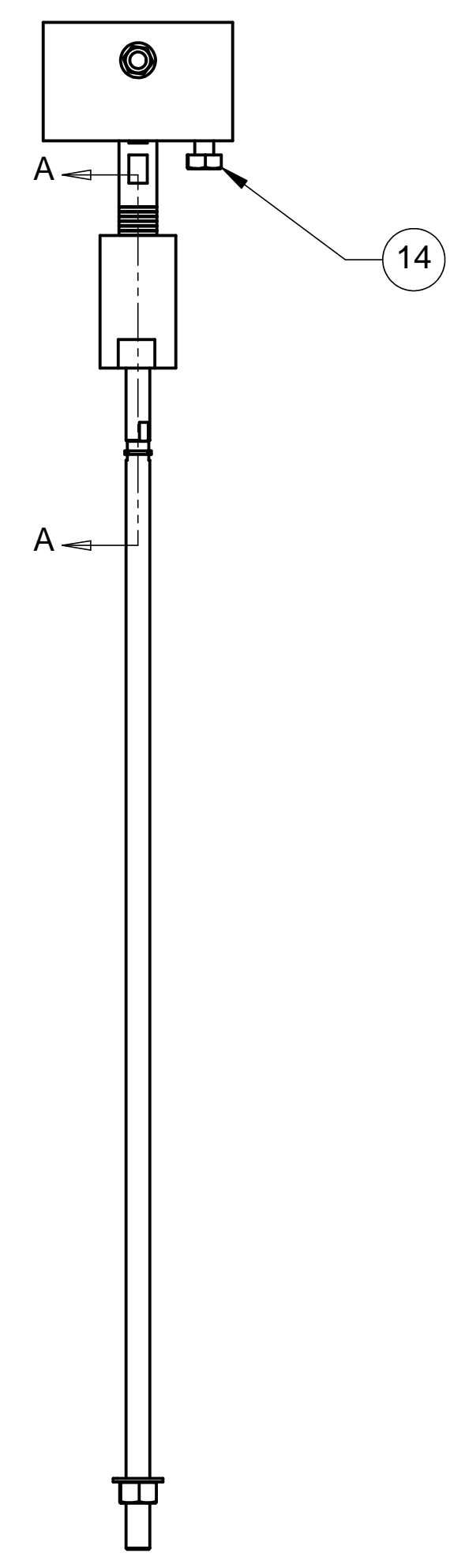
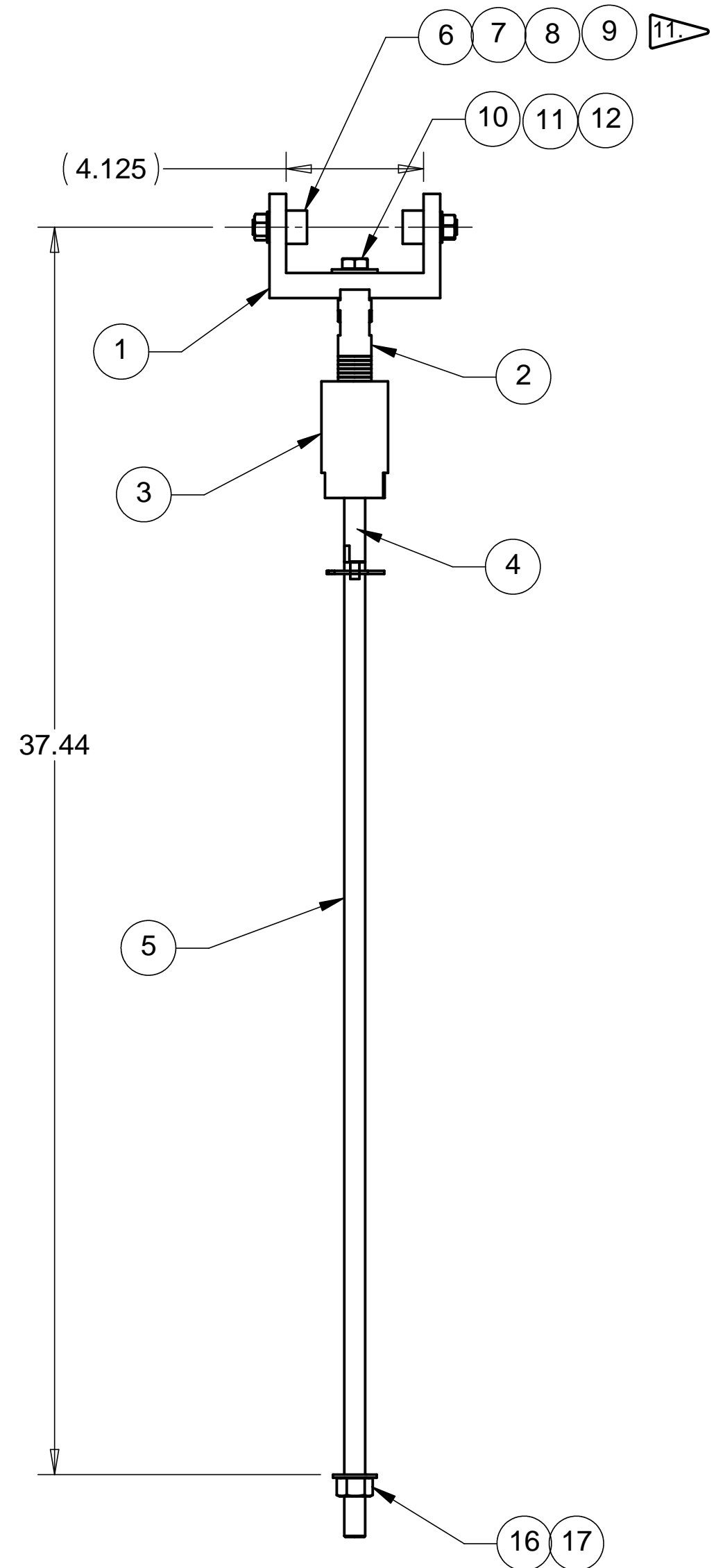


8 7 6 5 4 3 2 1

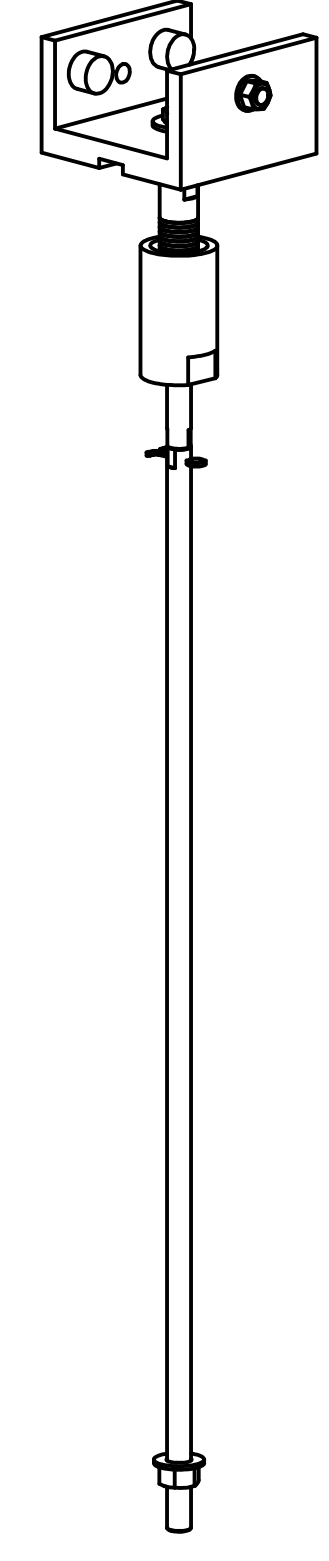
REVISIONS			
REV.	DESCRIPTION	DATE	APPROVED

D

D



SECTION A-A



C

C

B

B

A

A

NOTES: UNLESS OTHERWISE SPECIFIED

1. ALL DIMENSIONS IN INCHES
 2. DIMENSIONS AND TOLERANCING PER ASME Y14.5M-1994
 3. SURFACE TEXTURE PER ANSI/ASME B 46.1-1985
 4. REMOVE ALL BURRS AND BREAK SHARP EDGES TO A MAXIMUM OF .015
 5. ALL INSIDE CORNERS TO BE .015 RADIUS MAX
 6. COUNTERSINK 82 DEGREES ALL TAPPED HOLES TO MAJOR DIAMETER
 7. COUNTERSINK 82 DEGREES APPROXIMATELY .015 DEEP ALL DRILLED HOLES
 8. PARTS TO BE THOROUGHLY CLEANED TO REMOVE ALL OIL, GREASE, DIRT AND CHIPS
 9. PART NUMBER (DRAWING NO. PLUS DASH NO. PLUS SERIAL NO.) TO BE CLEARLY MARKED ON THE PART ITSELF.
 10. PART WEIGHS 14.7 Lbs.
11. USE A VAPOR DEGREASER TO REMOVE ALL GREASE FROM CAM FOLLOWERS (ITEM 7).
12. DRILL AND COTTER PIN AFTER BOLTING CONNECTION TOGETHER.
13. STAMP ALL MATING PIECES.

ITEM NO.	QTY.	PART NO.	DESCRIPTION
1	1	D972946-1	RAIL SYSTEM TROLLEY
2	1	D972949-1	RAIL SYSTEM TROLLEY LINK #1
3	1	D972950-1	RAIL SYSTEM TROLLEY LINK #2
4	1	D972951-1	RAIL SYSTEM TROLLEY LINK #3
5	1	D972431-1	BSC SYSTEM TROLLEY LINK #1
6	3	RBC-S-32-LW	CAM FOLLOWER, 1.0 O.D. X .625, MOORE BEARING
7	3	STD HARDWARE	WASHER, SST 7/16 FLAT
8	3	STD HARDWARE	WASHER, SST 7/16 LOCK
9	3	STD HARDWARE	SST HEX NUT, 7/16-20 UNC-2B
10	1	STD HARDWARE	WASHER, SST 1/2 FLAT
11	1	STD HARDWARE	WASHER, SST 1/2 LOCK
12	1	STD HARDWARE	HEX HEAD SST BOLT, 1/2-13 UNC-2A X 1.0 LONG
13	1	McMASTER 60715K12	THRUST BEARING, 1 11/32 O.D. X .562 THK
14	1	STD HARDWARE	HEX HEAD SST BOLT, 1/2-13 UNC-2A X 1.5 LONG
15	1	McMASTER 98355A030	COTTER PIN, 1/16" X 1.0 LONG
16	1	STD HARDWARE	SST HEX NUT, 5/8-20 UNF-2B
17	1	STD HARDWARE	WASHER, SST 5/8 FLAT WIDE

PARTS LIST			
UNLESS OTHERWISE SPECIFIED: DIMENSIONS ARE IN INCHES -TOLERANCES-		CAD GENERATED DRAWING, DO NOT MANUALLY UPDATE DO NOT SCALE DRAWING	
DECIMALS .XX = +/- .03 .XXX = +/- .010	ANGULAR = +/- 30' SURFACE FINISH = 250	TITLE HYTEC, INC BSC TROLLEY AND LINKAGE ASSEMBLY #1	
FINISH	SIGNATURE	DATE	DWG. NO.
	DESIGNED W. K. MILLER	1/18/98	SIZE
	DRAWN W. K. MILLER	1/18/98	SHEET NO.
PART NO. D972386-1	CHECKED HARRY SALAZAR	2/5/98	D972386 D 1 of 1
	ENGR. T. THOMPSON	2/5/98	REVISION
	APPROVED T. THOMPSON	2/5/98	SCALE 1/4

8 7 6 5 4 3 2 1