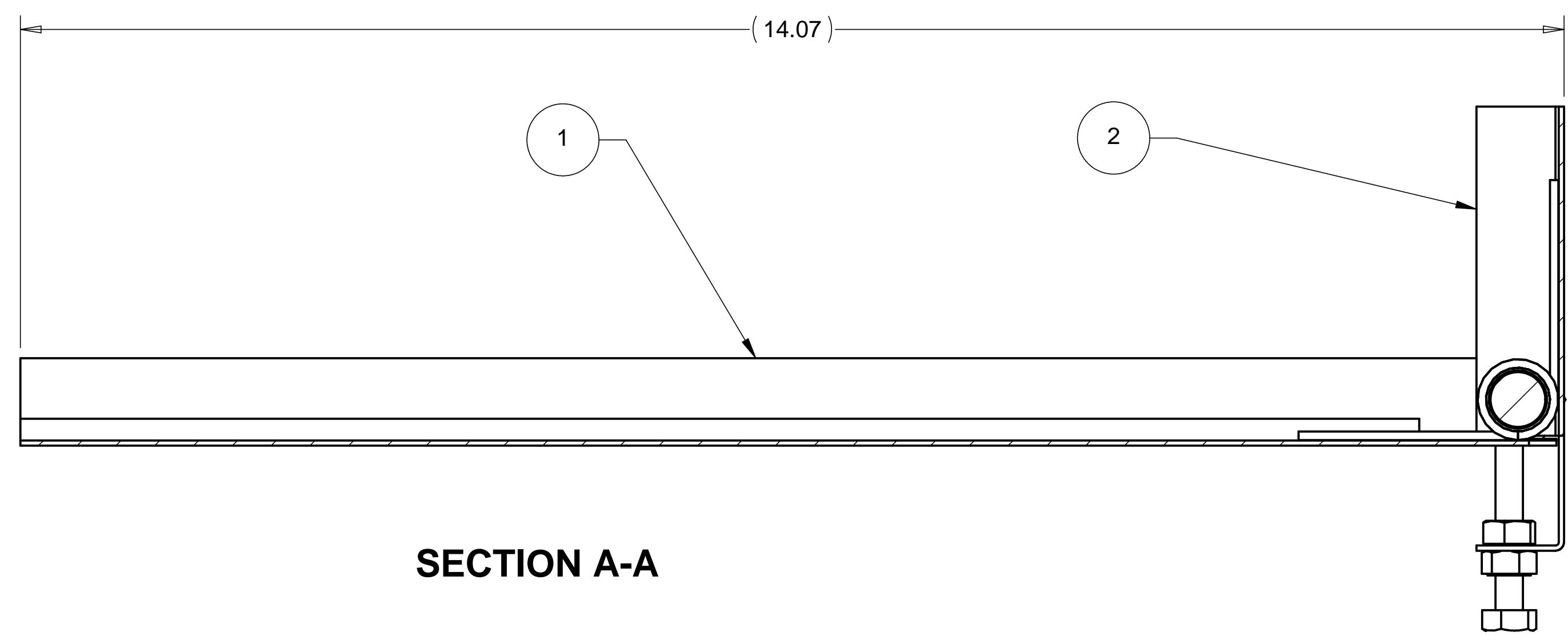
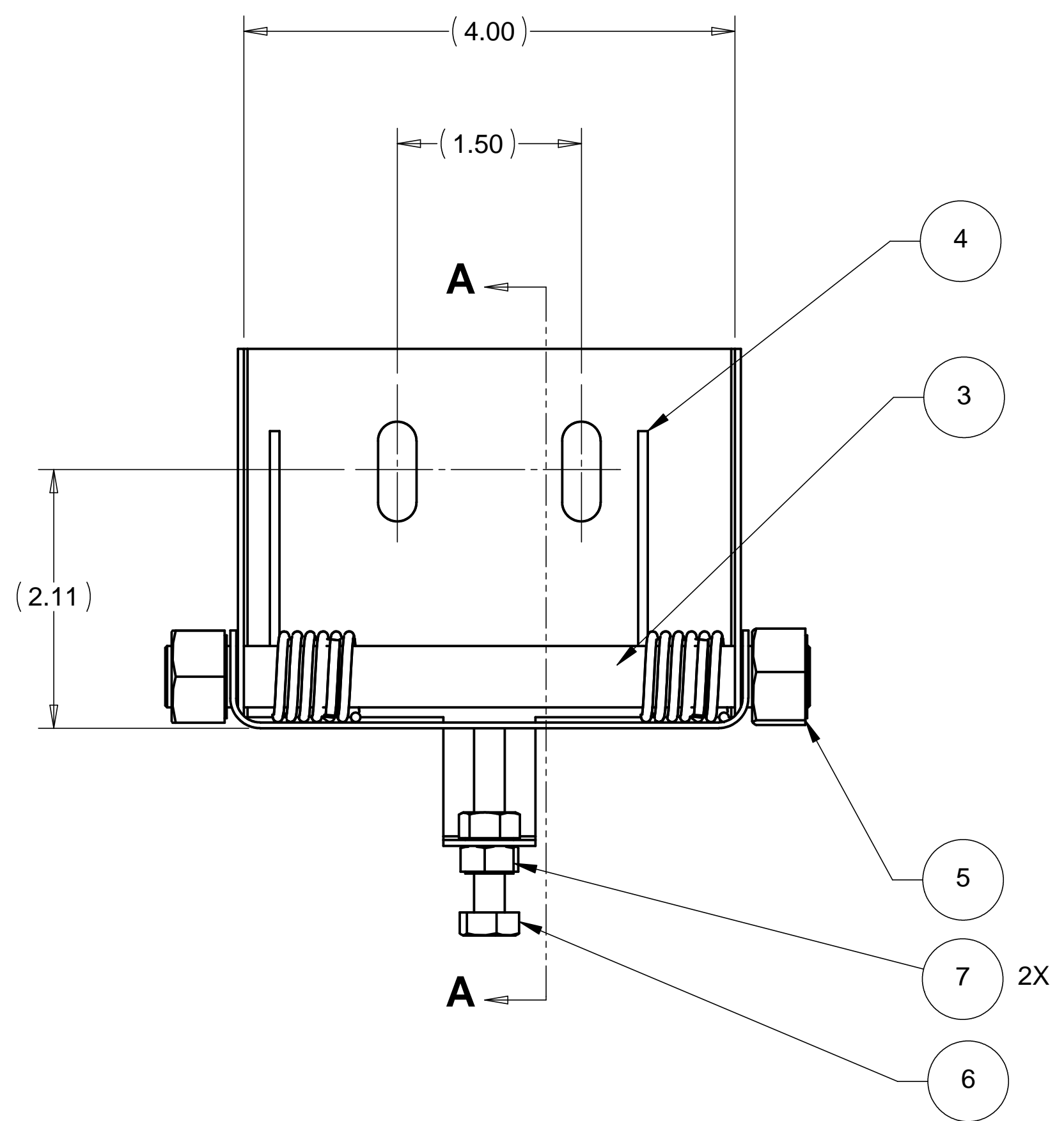
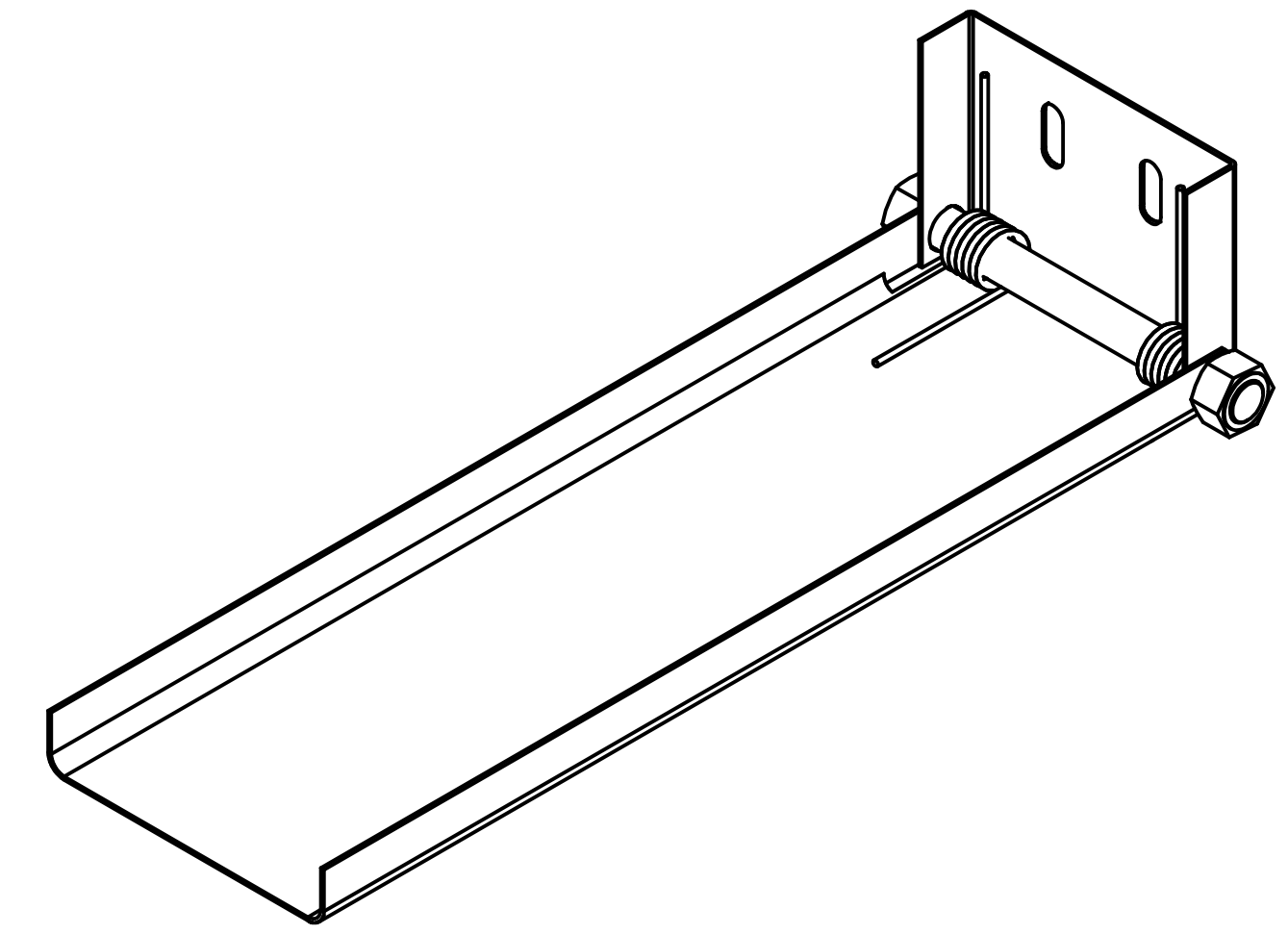


8 7 6 5 4 3 2 1

REVISIONS			
REV.	DESCRIPTION	DATE	APPROVED

D
C
B
A

D
C
B
A



SECTION A-A

WEIGHT: 1.6 lbs

ITEM NO.	QTY.	PART NO.	DESCRIPTION
1	1	D972424-1	Z-ELEVATION HORIZONTAL PART
2	1	D972425-1	Z-ELEVATION VERTICAL PART
3	1	D972426-1	Z-ELEVATION HINGE PIN
4	2	McMASTER #9287K47	TORSION SPRINGS
5	2		NUT, HEX 1/2-13 UNC-2B, STAINLESS STEEL
6	1		BOLT, HEX HD 1/4-20 UNC-2A X 2.0 LG., STAINLESS STEEL
7	2		NUT, HEX 1/4-20 UNC-2B, STAINLESS STEEL

PARTS LIST			
UNLESS OTHERWISE SPECIFIED: DIMENSIONS ARE IN INCHES -TOLERANCES-		CAD GENERATED DRAWING, DO NOT MANUALLY UPDATE DO NOT SCALE DRAWING	
DECIMALS .X = +/- .1 .XX = +/- .03 .XXX = +/- .010	ANGULAR = +/- .30° SURFACE FINISH = 250	<p>HYTEC, INC</p> <p>TITLE BSC CENTERING JIG Z-ELEVATION STAGE SUB-ASSEMBLY</p>	
FINISH	SIGNATURE	DATE	DWG. NO. D972382 SIZE D SHEET NO. 1 of 1 SCALE 1/1 REVISION
	DESIGNED W. K. MILLER	1-14-98	
	DRAWN GERALD BUSTOS	1-14-98	
	CHECKED HARRY SALAZAR	----	
	ENGR. T. THOMPSON	----	
PART NO. D972382-1	APPROVED T. THOMPSON	----	

8 7 6 5 4 3 2 1