

8

7

6

5

4

3

2

1

REVISIONS		DATE	APPROVED
REV	DESCRIPTION		

D

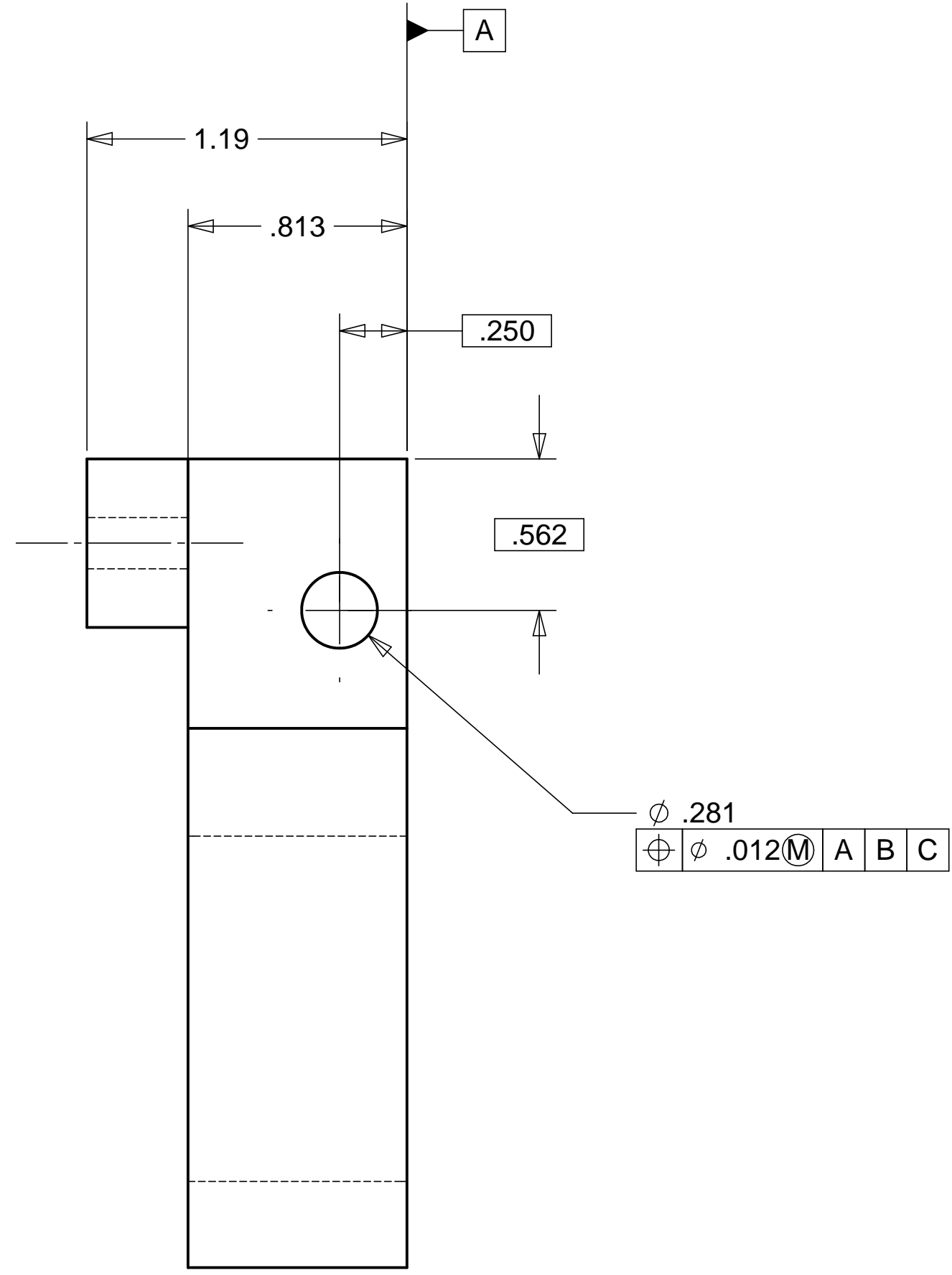
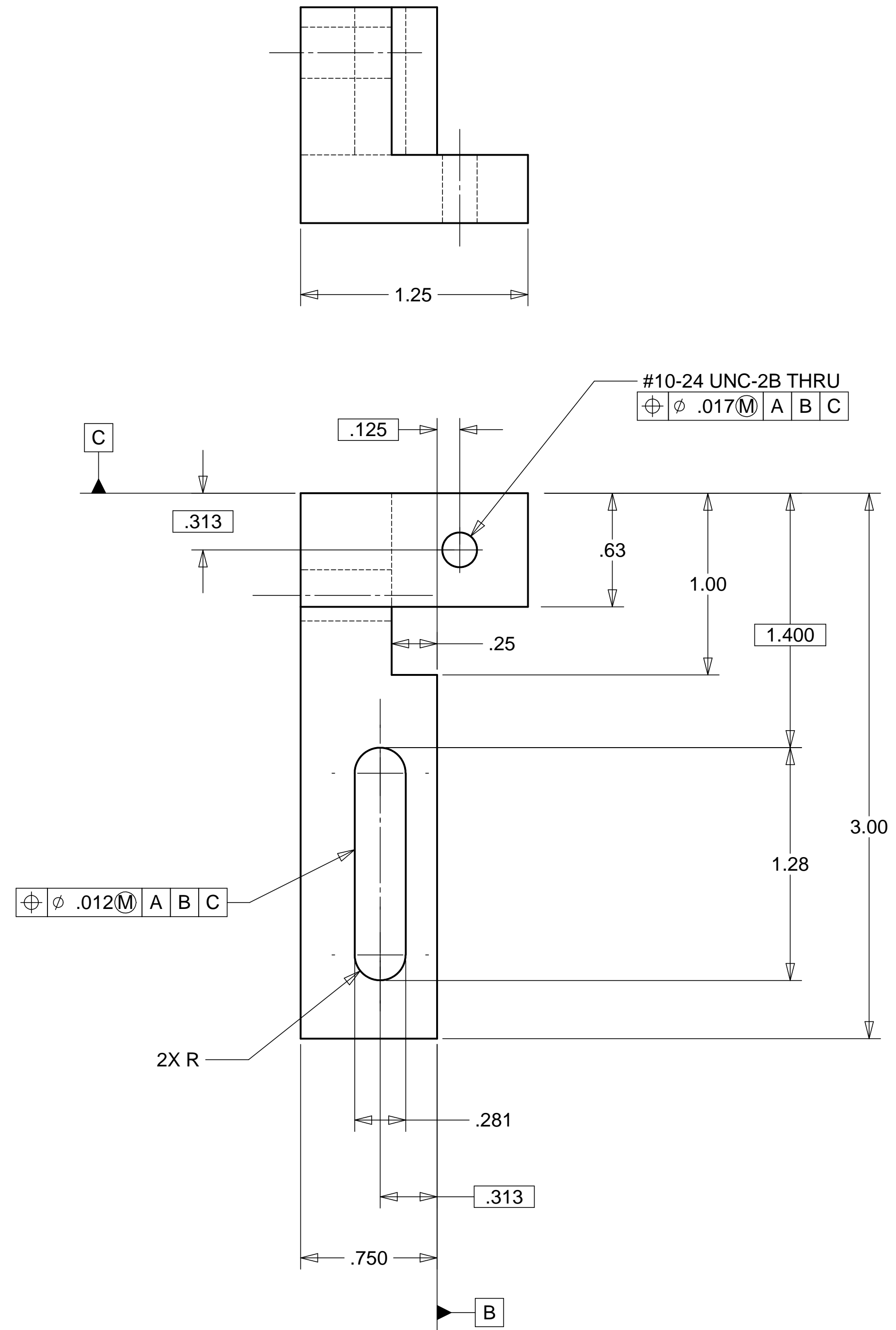
D

C

C

B

B



MATERIAL: ALUM. 6061

NOTES: UNLESS OTHERWISE SPECIFIED

1. ALL DIMENSIONS IN INCHES
2. DIMENSIONS AND TOLERANCING PER ANAS1 Y14.5M-1994
3. SURFACE TEXTURE PER ANI/ASME B 46.1-1985
4. REMOVE ALL BURRS AND BREAK SHARP EDGES TO A MAXIMUM OF .015
5. ALL INSIDE CORNERS TO BE .015 RADIUS MAX
6. COUNTERSINK 82 DEGREES ALL TAPPED HOLES TO MAJOR DIAMETER
7. COUNTERSINK 82 DEGREES APPROXIMATELY .03/.06 DEEP ALL DRILLED HOLES
8. PARTS TO BE THOROUGHLY CLEANED TO REMOVE ALL OIL, GREASE, DIRT AND CHIPS
9. PART NUMBER (DRAWING NO., DASH NO., REVISION NO., SERIAL NO.) TO BE CLEARLY MARKED ON THE PART ITSELF.

ITEM NO.	QTY.	PART NO.	DESCRIPTION
PARTS LIST			
UNLESS OTHERWISE SPECIFIED: DIMENSIONS ARE IN INCHES -TOLERANCES-		CAD GENERATED DRAWING, DO NOT MANUALLY UPDATE DO NOT SCALE DRAWING	
DECIMALS ANGULAR = +/- .30'		HYTEC, INC TITLE LIGO DIAL INDICATOR MOUNTING BLOCK	
.X = +/- .1			
.XX = +/- .03			
.XXX = +/- .010 SURFACE FINISH = 250			
FINISH		SIGNATURE	DATE
		H. SALAZAR	1-10-99
		H. SALAZAR	1-10-99
PART NO. D972158-1		CHECKED E. SWENSEN	DATE 04-22-99
		ENGR. E. SWENSEN	DATE 04-22-99
		APPROVED T. THOMPSON	DATE 04-22-99
		SCALE 1/2	REVISION
		DWG. NO. D972158	SIZE SHEET NO. D 1 of 1

A

A

8

7

6

5

4

3

2

1