

8 7 6 5 4 3 2 1

REVISIONS			
REV.	DESCRIPTION	DATE	APPROVED

D

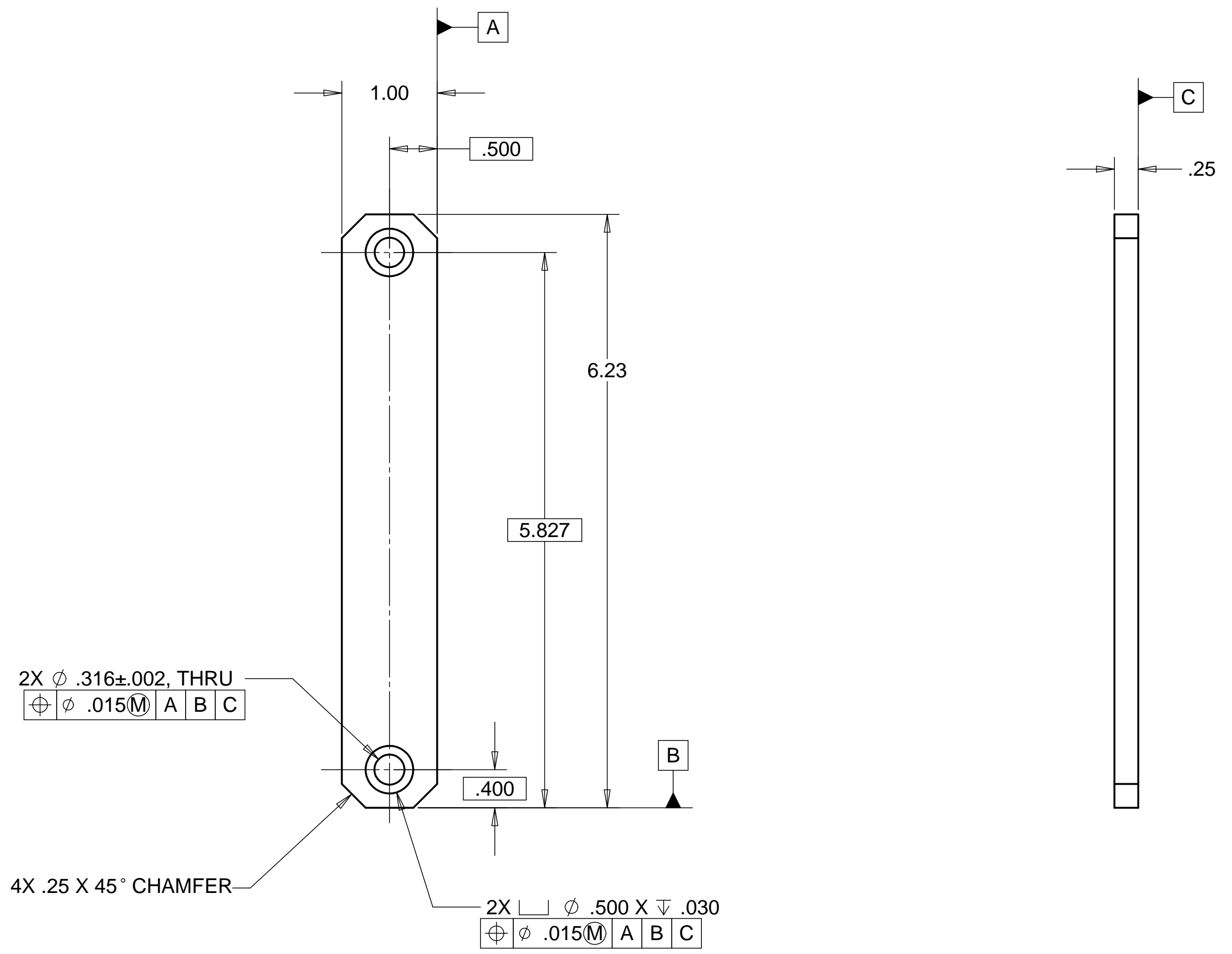
D

C

C

B

B



MATL: 6061-T6 ALUM.  
WEIGHT: 0.14 lbs.

NOTES: UNLESS OTHER WISE SPECIFIED

1. ALL DIMENSIONS IN INCHES
2. DIMENSIONS AND TOLERANCING PER ANAS1 Y14.5M-1994
3. SURFACE TEXTURE PER ANI/ASME B 46.1-1985
4. REMOVE ALL BURRS AND BREAK SHARP EDGES TO A MAXIMUM OF .015
5. ALL INSIDE CORNERS TO BE .015 RADIUS MAX
6. COUNTERSINK 82 DEGREES ALL TAPPED HOLES TO MAJOR DIAMETER
7. COUNTERSINK 82 DEGREES APPROXIMATELY .015 DEEP ALL DRILLED HOLES
8. PARTS TO BE THOROUGHLY CLEANED TO REMOVE ALL OIL, GREASE, DIRT AND CHIPS
9. PART NUMBER (DRAWING NO. PLUS DASH NO. PLUS SERIAL NO.) TO BE CLEARLY MARKED ON THE PART ITSELF.

PARTS LIST			
UNLESS OTHERWISE SPECIFIED: DIMENSIONS ARE IN INCHES -TOLERANCES-  DECIMALS            ANGULAR = +/- 30' .X = +/- .1 .XX = +/- .03 .XXX = +/- .010            SURFACE FINISH = 250	CAD GENERATED DRAWING, DO NOT MANUALLY UPDATE DO NOT SCALE DRAWING		<b>HYTEC, INC</b>  TITLE <b>LIGO            SCISSOR TABLE            LOCK LINK</b>
	FINISH	SIGNATURE	
PART NO.  <b>D972148-1</b>	DESIGNED	ROGER L. SMITH	05-14-98
	DRAWN	ROGER L. SMITH	05-14-98
	CHECKED	ERIK SWENSEN	05-14-98
	ENGR.	ERIK SWENSEN	05-14-98
APPROVED	T. THOMPSON	05-14-98	SCALE 1/1
DWG. NO. <b>D972148</b>		SIZE <b>D</b>	SHEET NO. <b>1 of 1</b>
REVISION		REVISION	

A

A

8 7 6 5 4 3 2 1