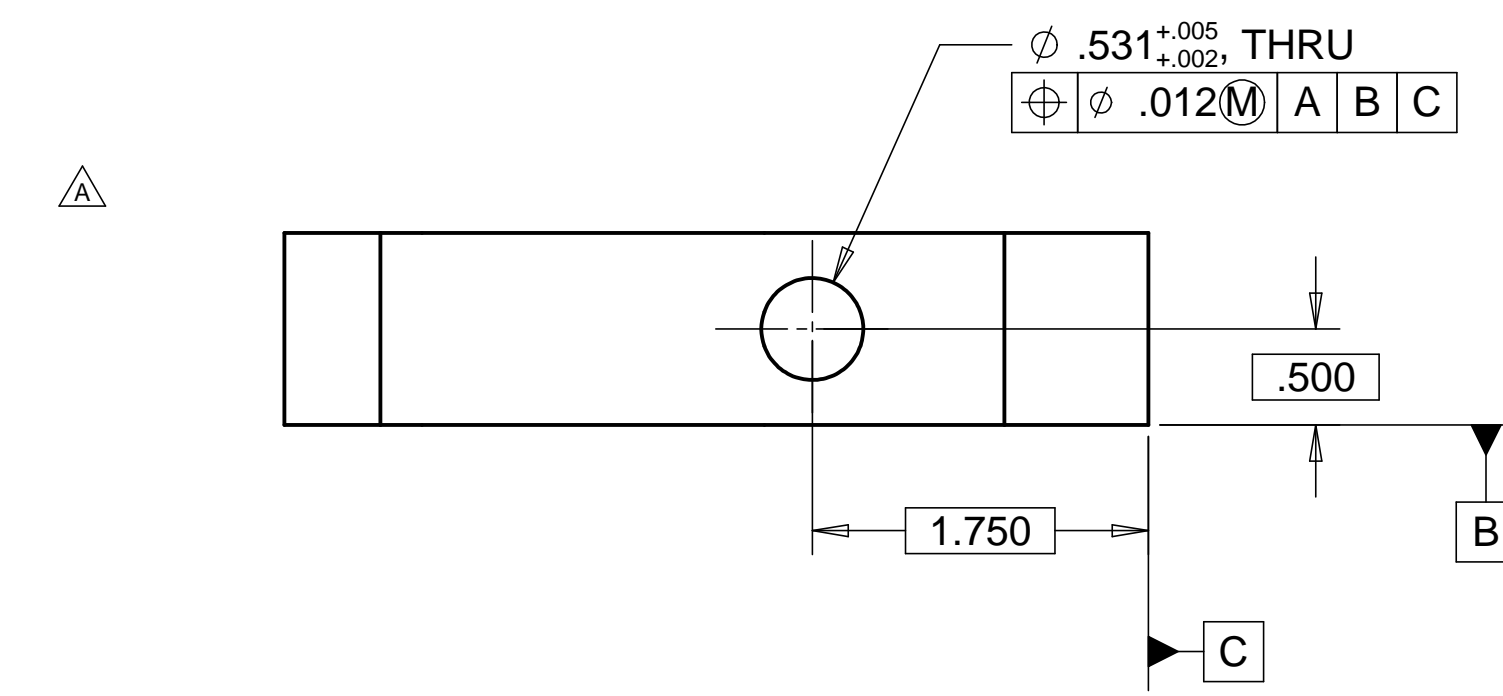
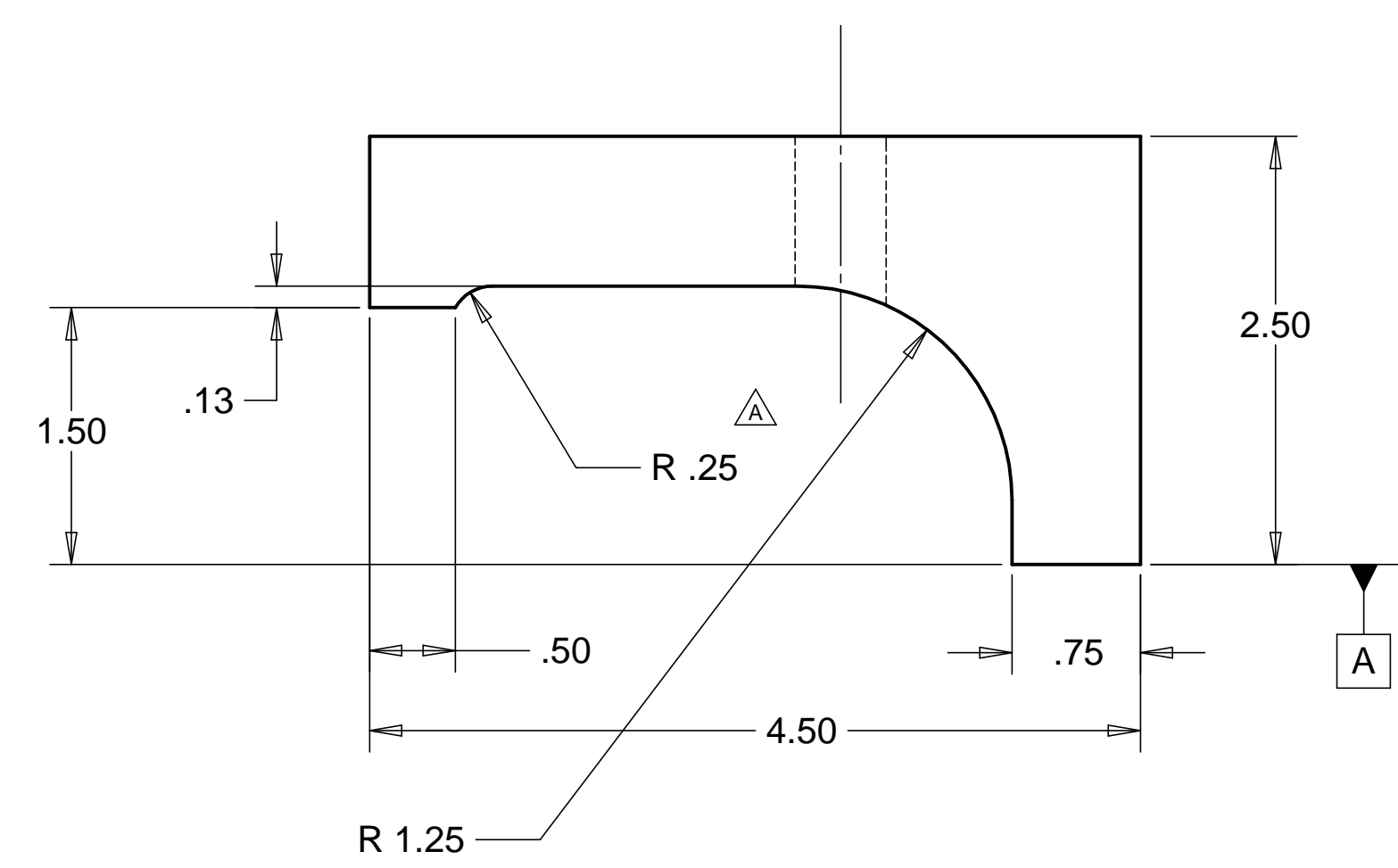
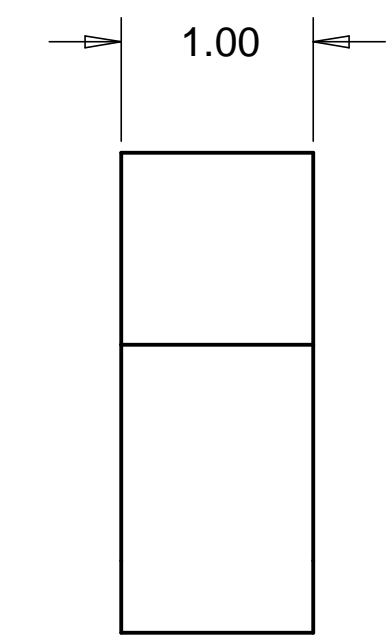


8 7 6 5 4 3 2 1

REVISIONS		DATE	APPROVED
REV	DESCRIPTION		
A	SEE ECN# D972146-A FOR CHANGE LIST	09/21/98	T. THOMPSON

D
C
B
A

D
C
B
A



MATL: 304 SST
 △ WEIGHT: 1.5 lbs

NOTES: UNLESS OTHERWISE SPECIFIED

1. ALL DIMENSIONS IN INCHES
2. DIMENSIONS AND TOLERANCING PER ASME Y14.5M-1994
3. SURFACE TEXTURE PER ANSI/ASME B 46.1-1985
4. REMOVE ALL BURRS AND BREAK SHARP EDGES TO A MAXIMUM OF .015
5. ALL INSIDE CORNERS TO BE .015 RADIUS MAX
6. COUNTERSINK 82 DEGREES ALL TAPPED HOLES TO MAJOR DIAMETER
7. COUNTERSINK 82 DEGREES APPROXIMATELY .03/.06 DEEP ALL DRILLED HOLES
8. PARTS TO BE THOROUGHLY CLEANED TO REMOVE ALL OIL, GREASE, DIRT AND CHIPS
9. PART NUMBER (DRAWING NO., DASH NO., REVISION NO., SERIAL NO.) TO BE CLEARLY MARKED ON THE PART ITSELF.

PARTS LIST			
UNLESS OTHERWISE SPECIFIED: DIMENSIONS ARE IN INCHES -TOLERANCES-	CAD GENERATED DRAWING, DO NOT MANUALLY UPDATE DO NOT SCALE DRAWING		HYTEC, INC TITLE LIGO SCISSORS TABLE MOUNTING CLAMP
	DECIMALS	ANGULAR = +/- .30'	
FINISH		SIGNATURE	DATE
		DESIGNED	ROGER L. SMITH
		DRAWN	ROGER L. SMITH
		CHECKED	T. THOMPSON
		ENGR.	T. THOMPSON
		APPROVED	T. THOMPSON
PART NO. D972146-1		DWG. NO. D972146	SCALE 1/1
		SIZE D	SHEET NO. 1 of 1
		REVISION A	

8 7 6 5 4 3 2 1