

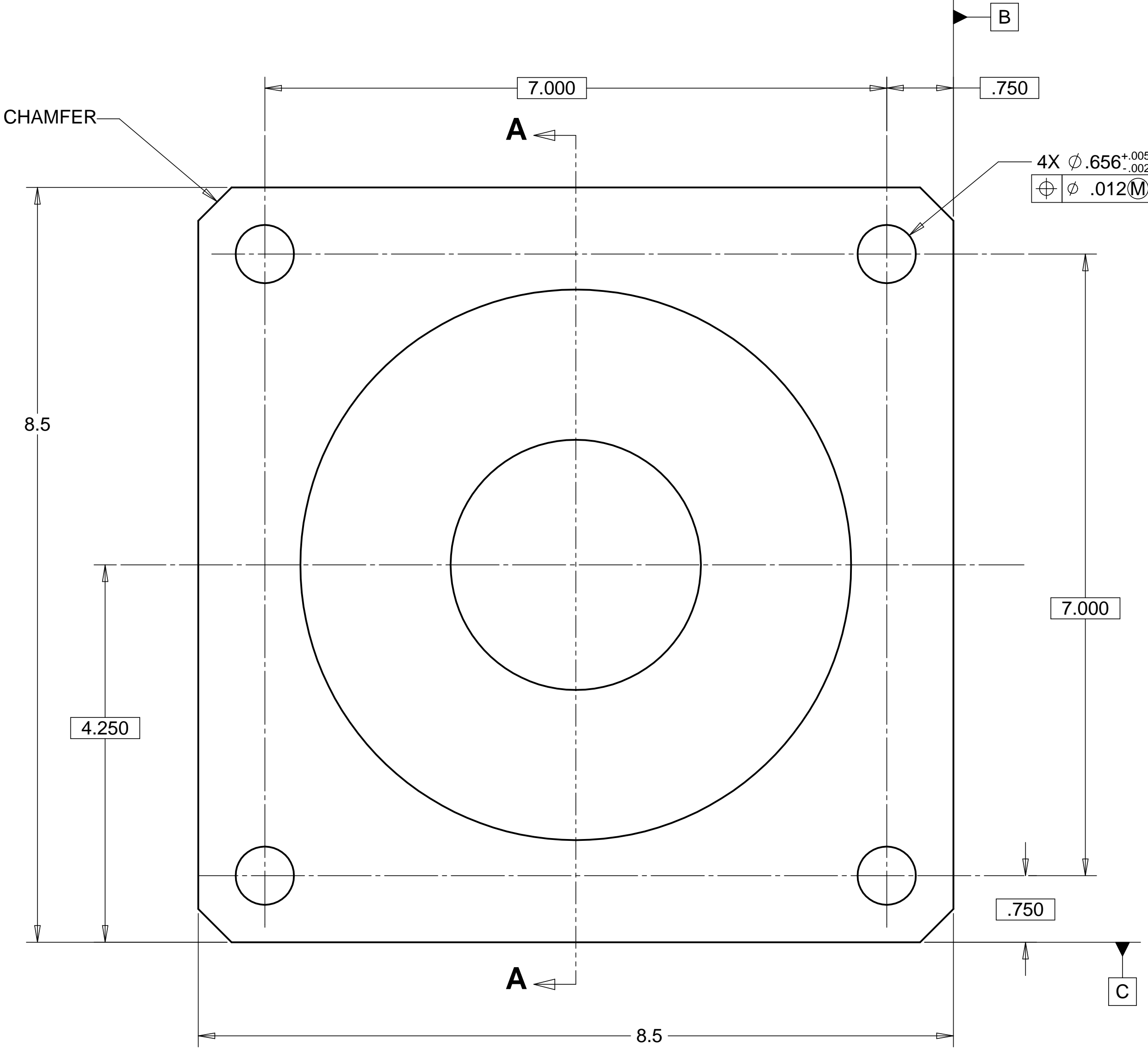
8 7 6 5 4 3 2 1

REVISIONS		DATE	APPROVED
REV.	DESCRIPTION		
A	SEE ECN# D972142-A FOR CHANGE LIST	1-06-98	T. THOMPSON

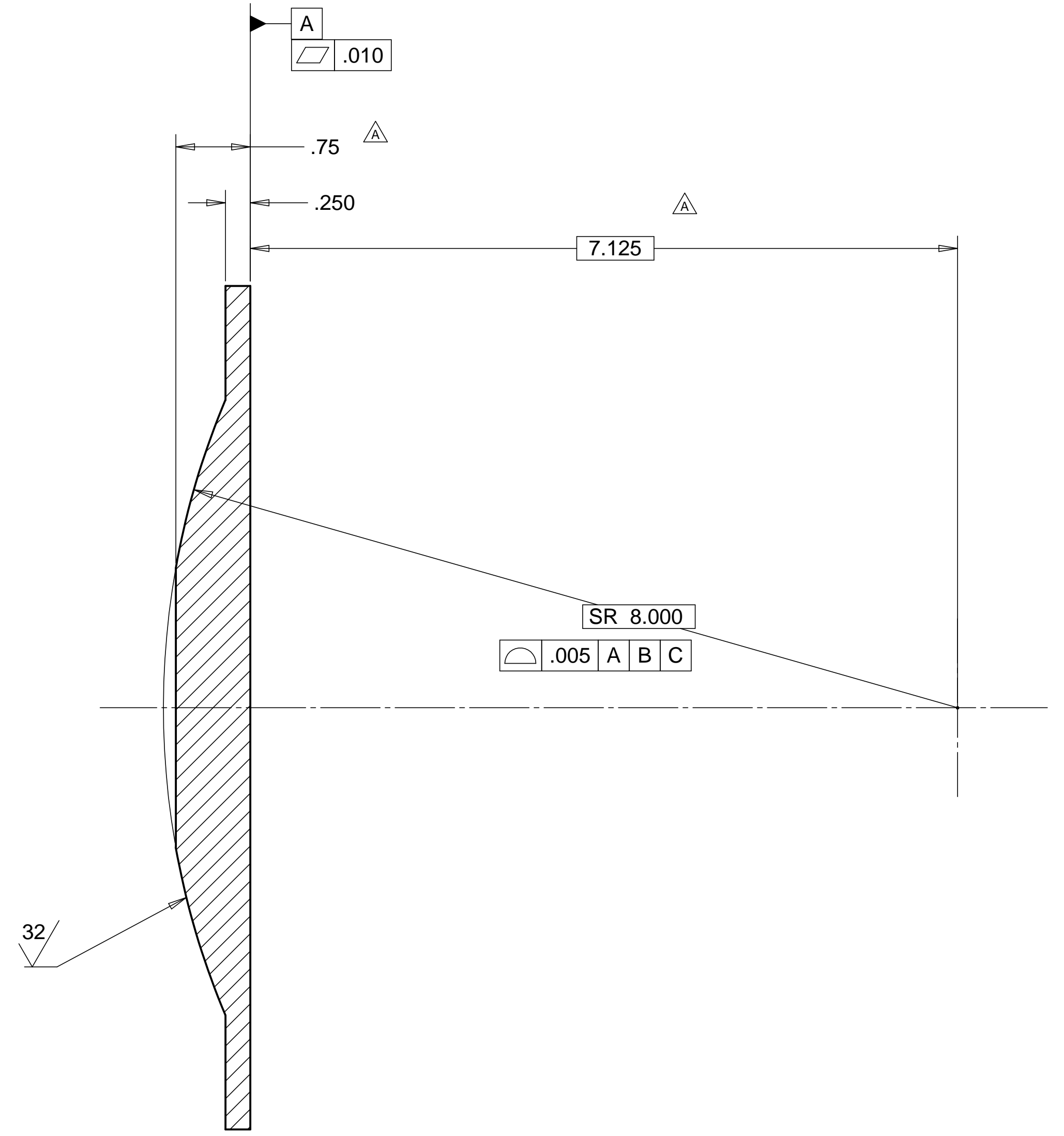
D
C
B
A

D
C
B
A

4X
.4 X 45° CHAMFER



4X ϕ .656^{+0.005}_{-.002} THRU
 ϕ .012(M) A B C



SECTION A-A

MATL: LOW CARBON STEEL
COATING: HI-T-LUBE, MAGNAPLATE INC.
WEIGHT: 7.7 lbs.

NOTES: UNLESS OTHER WISE SPECIFIED

- ALL DIMENSIONS IN INCHES
- DIMENSIONS AND TOLERANCING PER ANAS1 Y14.5M-1994
- SURFACE TEXTURE PER ANI/ASME B 46.1-1985
- REMOVE ALL BURRS AND BREAK SHARP EDGES TO A MAXIMUM OF .015
- ALL INSIDE CORNERS TO BE .015 RADIUS MAX
- COUNTERSINK 82 DEGREES ALL TAPPED HOLES TO MAJOR DIAMETER
- COUNTERSINK 82 DEGREES APPROXIMATELY .015 DEEP ALL DRILLED HOLES
- PARTS TO BE THOROUGHLY CLEANED TO REMOVE ALL OIL, GREASE, DIRT AND CHIPS
- PART NUMBER (DRAWING NO. PLUS DASH NO. PLUS SERIAL NO.) TO BE CLEARLY MARKED ON THE PART ITSELF.

PARTS LIST			
UNLESS OTHERWISE SPECIFIED: DIMENSIONS ARE IN INCHES -TOLERANCES-	CAD GENERATED DRAWING, DO NOT MANUALLY UPDATE DO NOT SCALE DRAWING		HYTEC, INC TITLE LIGO CROSSBEAM / AIRBEARING SPHERICAL MOUNTING PAD
	DECIMALS	ANGULAR = +/- .30°	
FINISH	SIGNATURE	DATE	
PART NO. D972142-1	DESIGNED	ROGER L. SMITH	10-22-97
	DRAWN	ROGER L. SMITH	12-08-97
	CHECKED	HARRY SALAZAR	12-09-97
	ENGR.	T. THOMPSON	12-10-97
	APPROVED	T. THOMPSON	12-10-97
		SCALE 1/2	REVISION A
		DWG. NO. D972142	SIZE D SHEET NO. 1 of 1

8 7 6 5 4 3 2 1