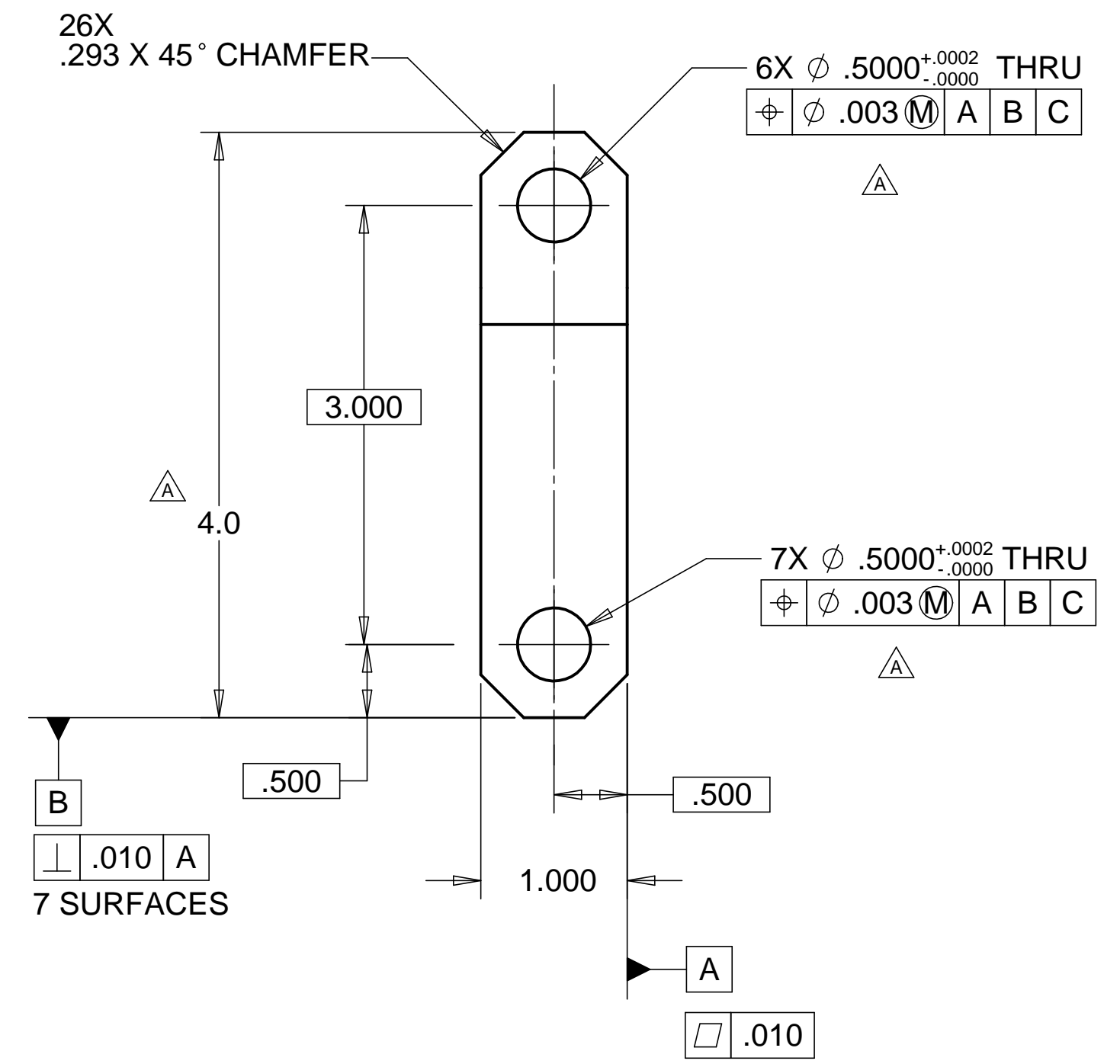
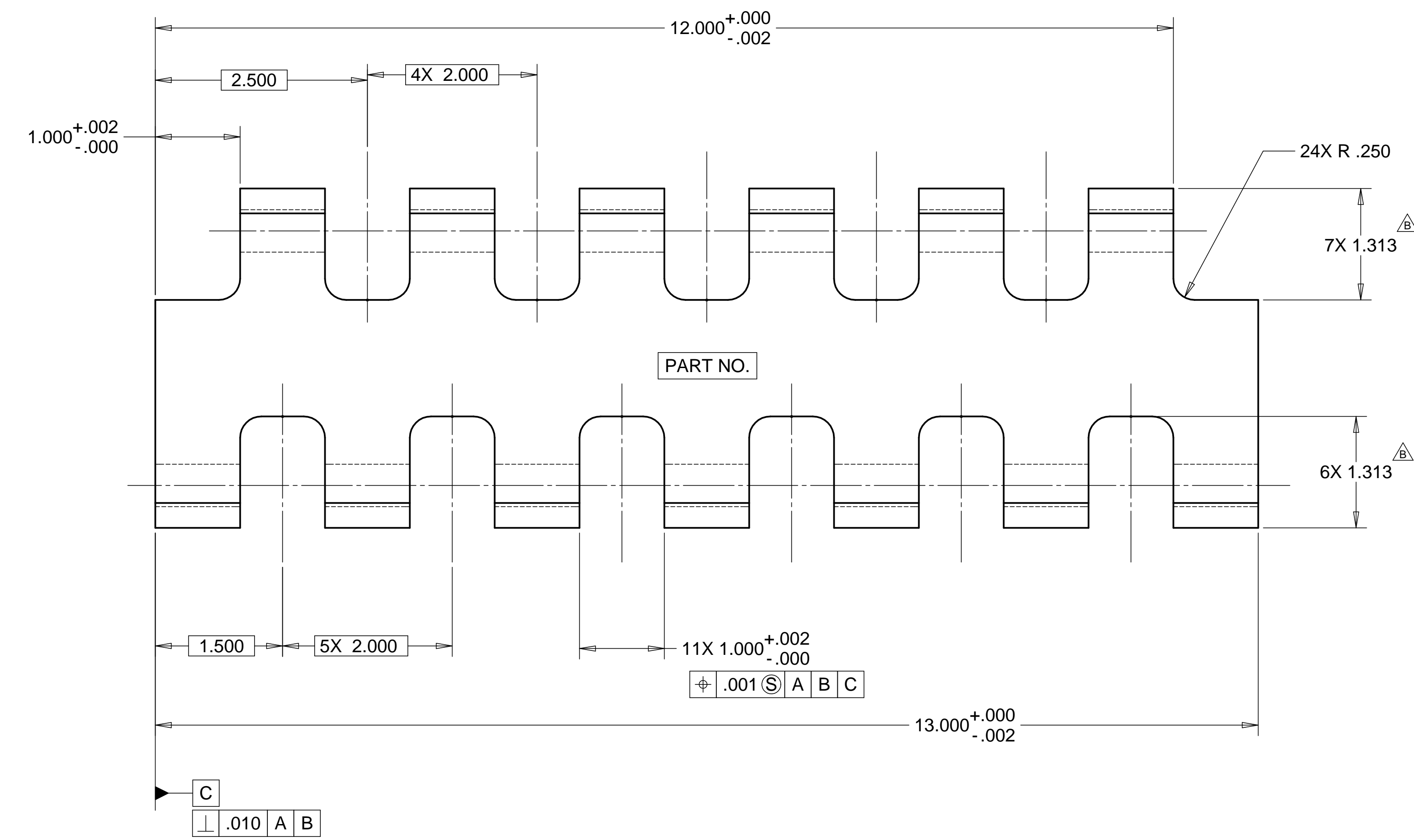


8 7 6 5 4 3 2 1

REVISIONS			
REV.	DESCRIPTION	DATE	APPROVED
A	SEE ECN# D972133-A FOR CHANGE LIST	11-03-97	T. THOMPSON
B	SEE ECN# D972133-B FOR CHANGE LIST	01-23-98	T. THOMPSON



MATL: 303 STAINLESS STEEL  
WEIGHT: 9.2 lbs.

NOTES: UNLESS OTHERWISE SPECIFIED

- ALL DIMENSIONS IN INCHES
- DIMENSIONS AND TOLERANCING PER ASME Y14.5M-1994
- SURFACE TEXTURE PER ANSI/ASME B 46.1-1985
- REMOVE ALL BURRS AND BREAK SHARP EDGES TO A MAXIMUM OF .015
- ALL INSIDE CORNERS TO BE .015 RADIUS MAX
- COUNTERSINK 82 DEGREES ALL TAPPED HOLES TO MAJOR DIAMETER
- COUNTERSINK 82 DEGREES APPROXIMATELY .015 DEEP ALL DRILLED HOLES
- PARTS TO BE THOROUGHLY CLEANED TO REMOVE ALL OIL, GREASE, DIRT AND CHIPS
- PART NUMBER (DRAWING NO. PLUS DASH NO. PLUS SERIAL NO.) TO BE CLEARLY MARKED ON THE PART.

PARTS LIST			
UNLESS OTHERWISE SPECIFIED: DIMENSIONS ARE IN INCHES -TOLERANCES-  DECIMALS      ANGULAR = +/- .30° X = +/- .1 .XX = +/- .03 .XXX = +/- .010  FINISH  PART NO. <b>D972133-1</b>	CAD GENERATED DRAWING, DO NOT MANUALLY UPDATE DO NOT SCALE DRAWING		<b>HYTEC, INC</b> TITLE <b>LIGO            SCISSOR TABLE            UPPER HING LINK</b>
	DESIGNED	ROGER L. SMITH	DATE 5-28-97
	DRAWN	ROGER L. SMITH	5-28-97
	CHECKED	HARRY SALAZAR	8-5-97
	ENGR.	T. THOMPSON	8-6-97
APPROVED	T. THOMPSON	8-6-97	DWG. NO. <b>D972133</b>
SCALE 1/1			SIZE SHEET NO. <b>D 1 of 1</b>
			REVISION <b>B</b>

8 7 6 5 4 3 2 1