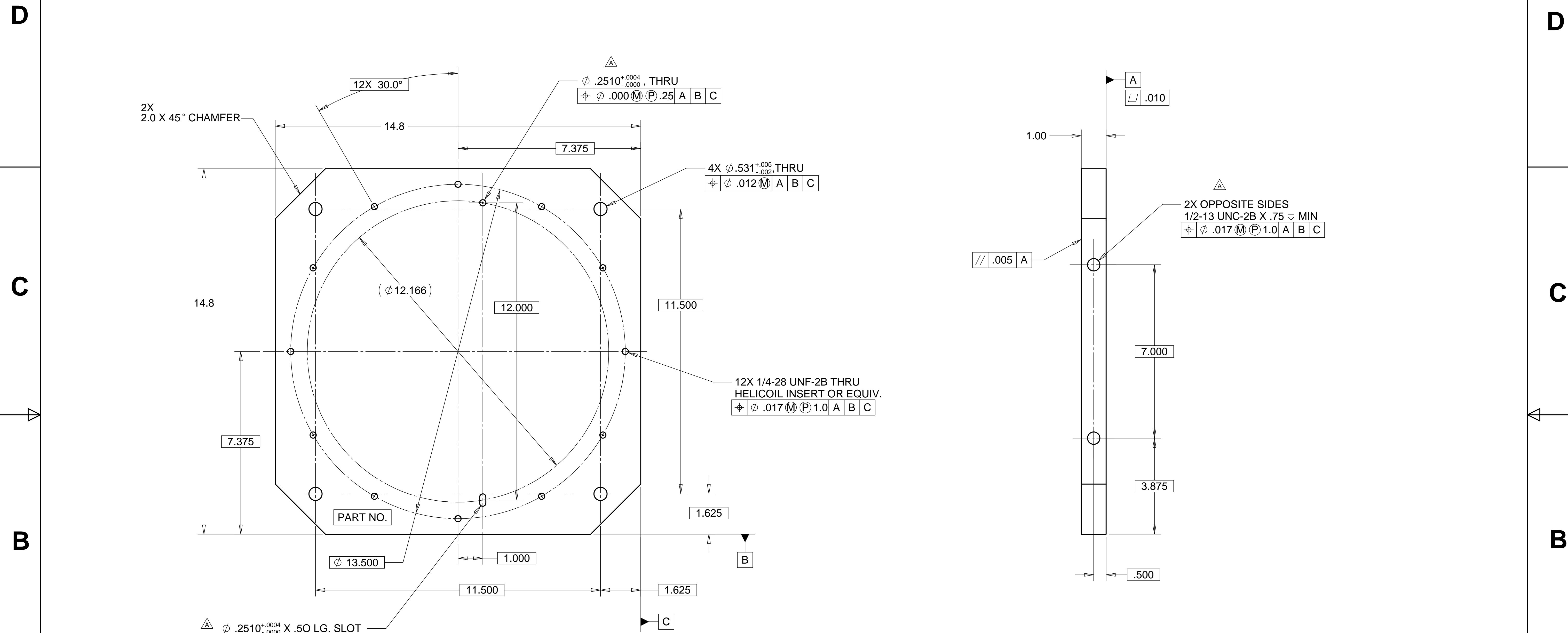


8 7 6 5 4 3 2 1

REVISIONS			
REV.	DESCRIPTION	DATE	APPROVED
A	SEE ECN# D972120-A FOR CHANGE LIST	03-30-98	E. SWENSEN



2X
2.0 X 45° CHAMFER

$\phi .2510^{+0.0004}_{-.0000}$ THRU
 $\phi .000 \text{ (M) (P) .25 A B C}$

4X $\phi .531^{+0.005}_{-.002}$ THRU
 $\phi .012 \text{ (M) A B C}$

12X 1/4-28 UNF-2B THRU
HELICOIL INSERT OR EQUIV.
 $\phi .017 \text{ (M) (P) 1.0 A B C}$

2X OPPOSITE SIDES
1/2-13 UNC-2B X .75 MIN
 $\phi .017 \text{ (M) (P) 1.0 A B C}$

$\phi .2510^{+0.0004}_{-.0000}$ X .50 LG. SLOT
 $\phi .000 \text{ (M) (P) .25 A B C}$

NOTES: UNLESS OTHERWISE SPECIFIED

1. ALL DIMENSIONS IN INCHES
2. DIMENSIONS AND TOLERANCING PER ASME Y14.5M-1994
3. SURFACE TEXTURE PER ANSI/ASME B 46.1-1985
4. REMOVE ALL BURRS AND BREAK SHARP EDGES TO A MAXIMUM OF .015
5. ALL INSIDE CORNERS TO BE .015 RADIUS MAX
6. COUNTERSINK 82 DEGREES ALL TAPPED HOLES TO MAJOR DIAMETER
7. COUNTERSINK 82 DEGREES APPROXIMATELY .015 DEEP ALL DRILLED HOLES
8. PARTS TO BE THOROUGHLY CLEANED TO REMOVE ALL OIL, GREASE, DIRT AND CHIPS
9. PART NUMBER (DRAWING NO. PLUS DASH NO. PLUS SERIAL NO.) TO BE CLEARLY MARKED ON THE PART.

MATL: ALUM 6061-T6
WEIGHT: 20.0 lbs.

PARTS LIST			
UNLESS OTHERWISE SPECIFIED: DIMENSIONS ARE IN INCHES -TOLERANCES-		CAD GENERATED DRAWING, DO NOT MANUALLY UPDATE DO NOT SCALE DRAWING	
DECIMALS .X = +/- .1 .XX = +/- .03 .XXX = +/- .010	ANGULAR = +/- .30° SURFACE FINISH = 250	TITLE HYTEC, INC LIGO BSC AIRBEARING MOUNTING PLATE	
FINISH	SIGNATURE	DATE	DWG. NO.
	ROGER L. SMITH	5-28-97	D972120
DRAWN	ROGER L. SMITH	5-28-97	SIZE
CHECKED	E. SWENSEN	03-14-98	SHEET NO.
ENGR.	E. SWENSEN	03-14-98	D 1 of 1
APPROVED	T. THOMPSON	03-14-98	REVISION A
PART NO. D972120-1		SCALE 1/2	

8 7 6 5 4 3 2 1