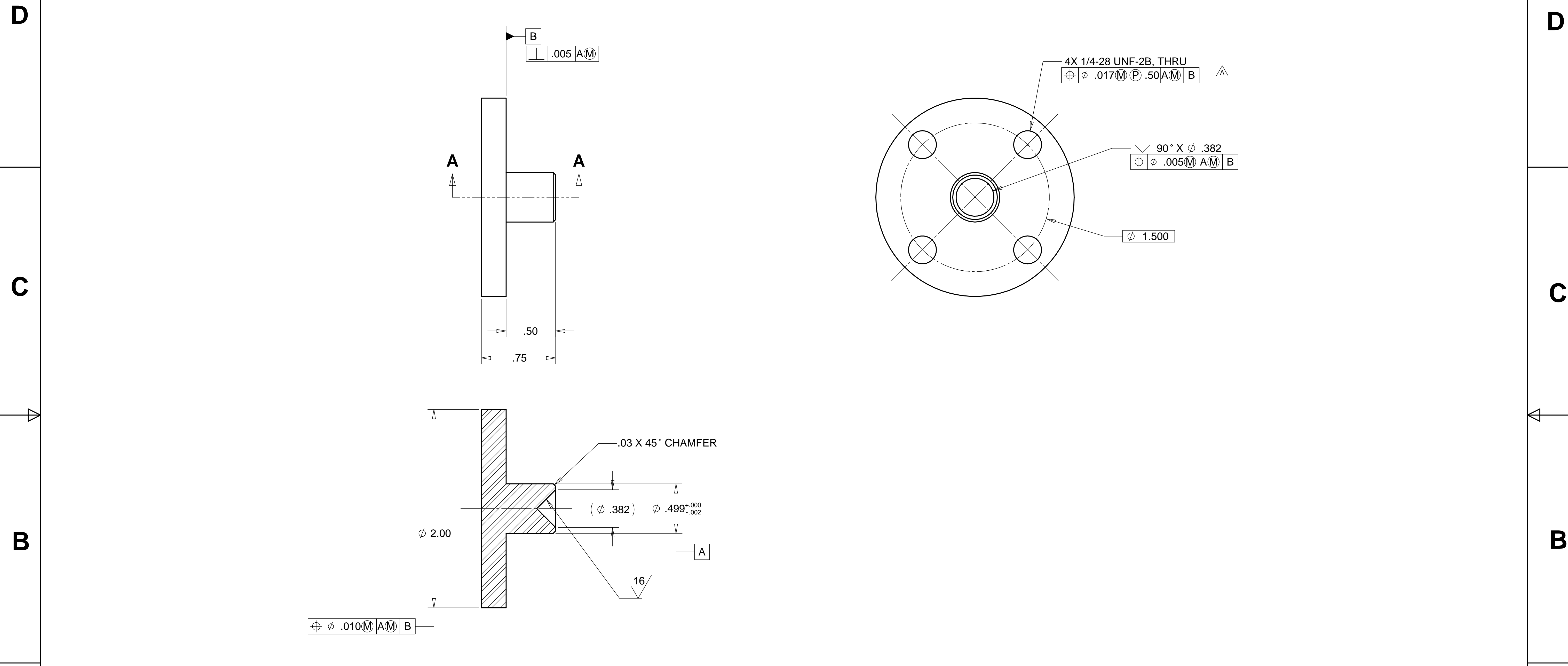


8 7 6 5 4 3 2 1

REVISIONS			
REV.	DESCRIPTION	DATE	APPROVED
A	SEE ECN# D972117-A FOR CHANGE LIST	05-04-98	T. THOMPSON



⊕ ⌀ .010 (M) (A) (M) B

SECTION A-A

MATL: 17-4PH STAINLESS STEEL - H900
WEIGHT: 0.23 lbs.

NOTES: UNLESS OTHERWISE SPECIFIED

- ALL DIMENSIONS IN INCHES
- DIMENSIONS AND TOLERANCING PER ANAS1 Y14.5M-1994
- SURFACE TEXTURE PER ANI/ASME B 46.1-1985
- REMOVE ALL BURRS AND BREAK SHARP EDGES TO A MAXIMUM OF .015
- ALL INSIDE CORNERS TO BE .015 RADIUS MAX
- COUNTERSINK 82 DEGREES ALL TAPPED HOLES TO MAJOR DIAMETER
- COUNTERSINK 82 DEGREES APPROXIMATELY .03/.06 DEEP ALL DRILLED HOLES
- PARTS TO BE THOROUGHLY CLEANED TO REMOVE ALL OIL, GREASE, DIRT AND CHIPS
- PART NUMBER (DRAWING NO. PLUS DASH NO. PLUS SERIAL NO.) TO BE CLEARLY MARKED ON THE PART ITSELF.

PARTS LIST			
UNLESS OTHERWISE SPECIFIED: DIMENSIONS ARE IN INCHES -TOLERANCES- DECIMALS ANGULAR = +/- 30' .X = +/- .1 .XX = +/- .03 .XXX = +/- .010 SURFACE FINISH = 250	CAD GENERATED DRAWING, DO NOT MANUALLY UPDATE DO NOT SCALE DRAWING		HYTEC, INC TITLE LIGO FINE X TRANSLATION FRAME MOUNTED BALL SEAT
	FINISH	SIGNATURE	
PART NO. D972117-1	DESIGNED	ROGER L. SMITH	10-22-97
	DRAWN	ROGER L. SMITH	15-20-97
	CHECKED	HARRY SALAZAR	11-28-97
	ENGR.	ERIC PONSLET	11-01-97
	APPROVED	T. THOMPSON	11-21-97
SCALE 2/1		REVISION A	
DWG. NO. D972117		SIZE D	SHEET NO. 1 of 1

8 7 6 5 4 3 2 1