

8

7

6

5

4

3

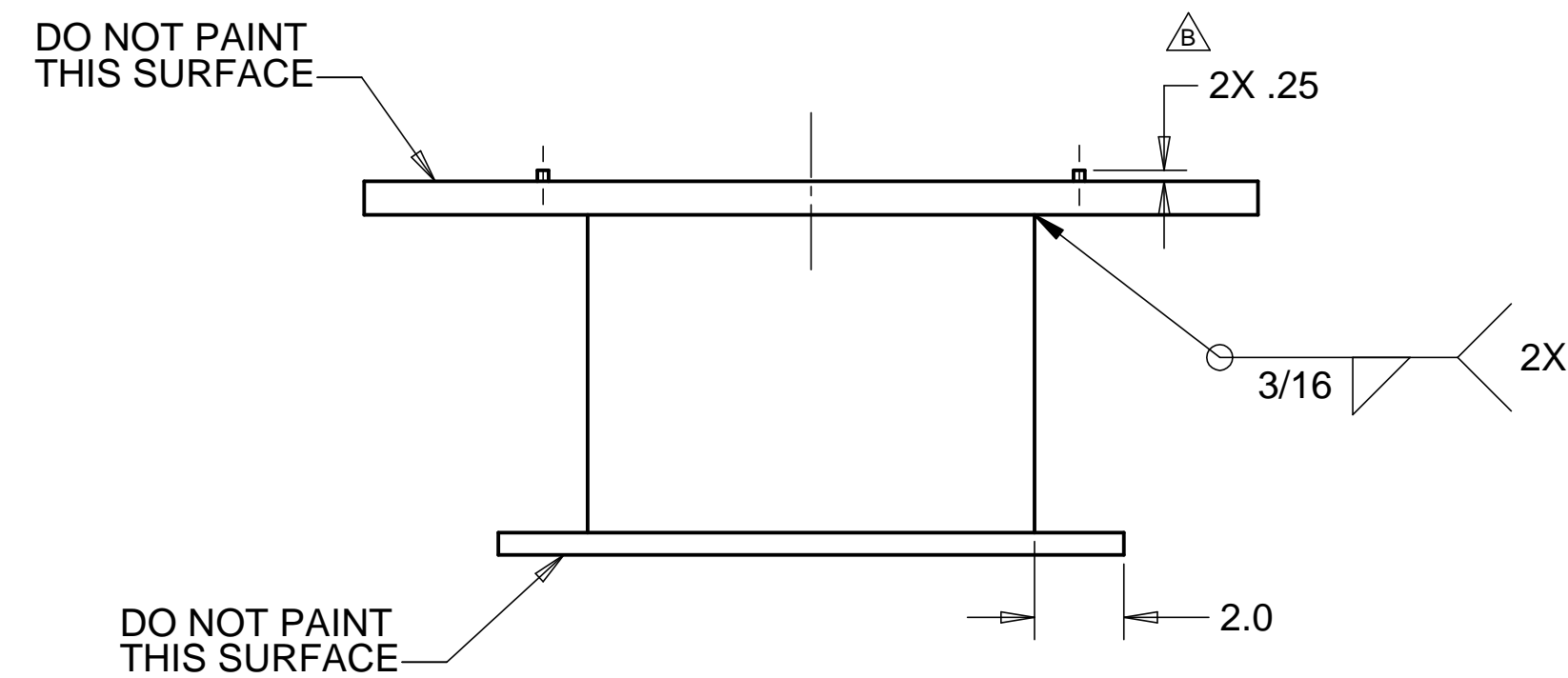
2

1

| REVISIONS | | | |
|-----------|------------------------------------|----------|-------------|
| REV | DESCRIPTION | DATE | APPROVED |
| A | SEE ECN# D972107-A FOR CHANGE LIST | 01/12/98 | T. THOMPSON |
| B | SEE ECN# D972107-B FOR CHANGE LIST | 06/25/98 | T. THOMPSON |
| C | SEE ECN# D972107-C FOR CHANGE LIST | 04/21/99 | T. THOMPSON |

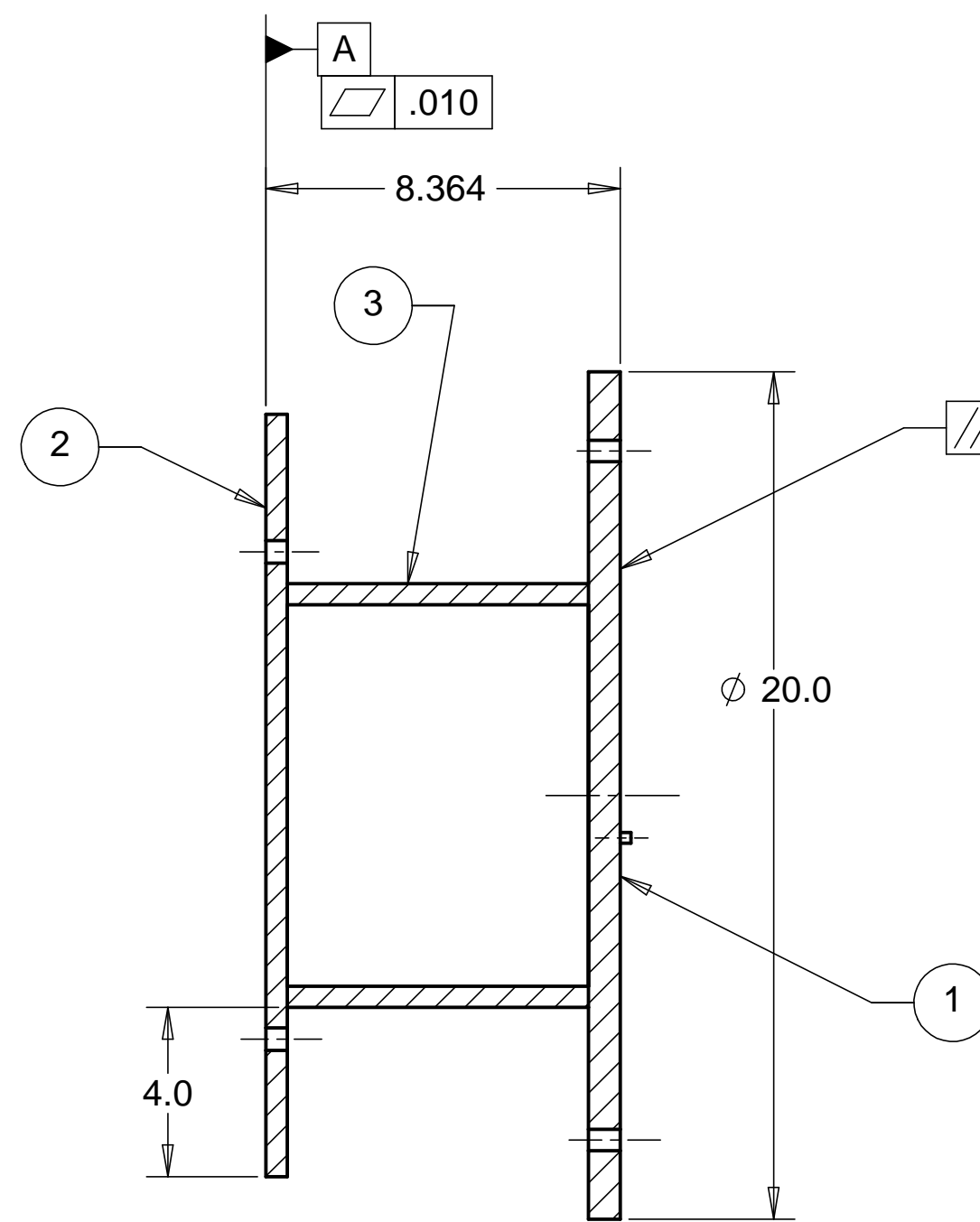
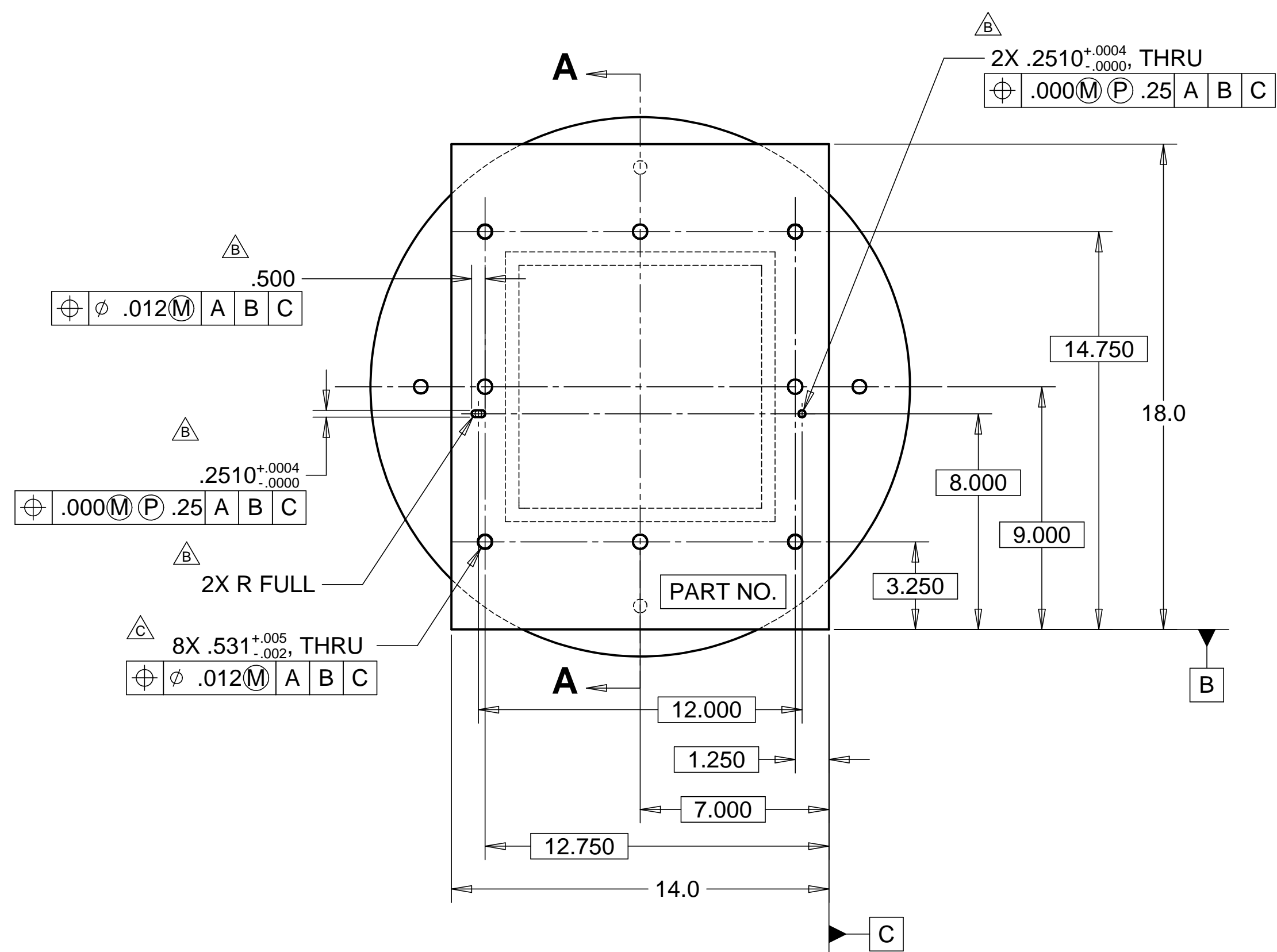
D

D



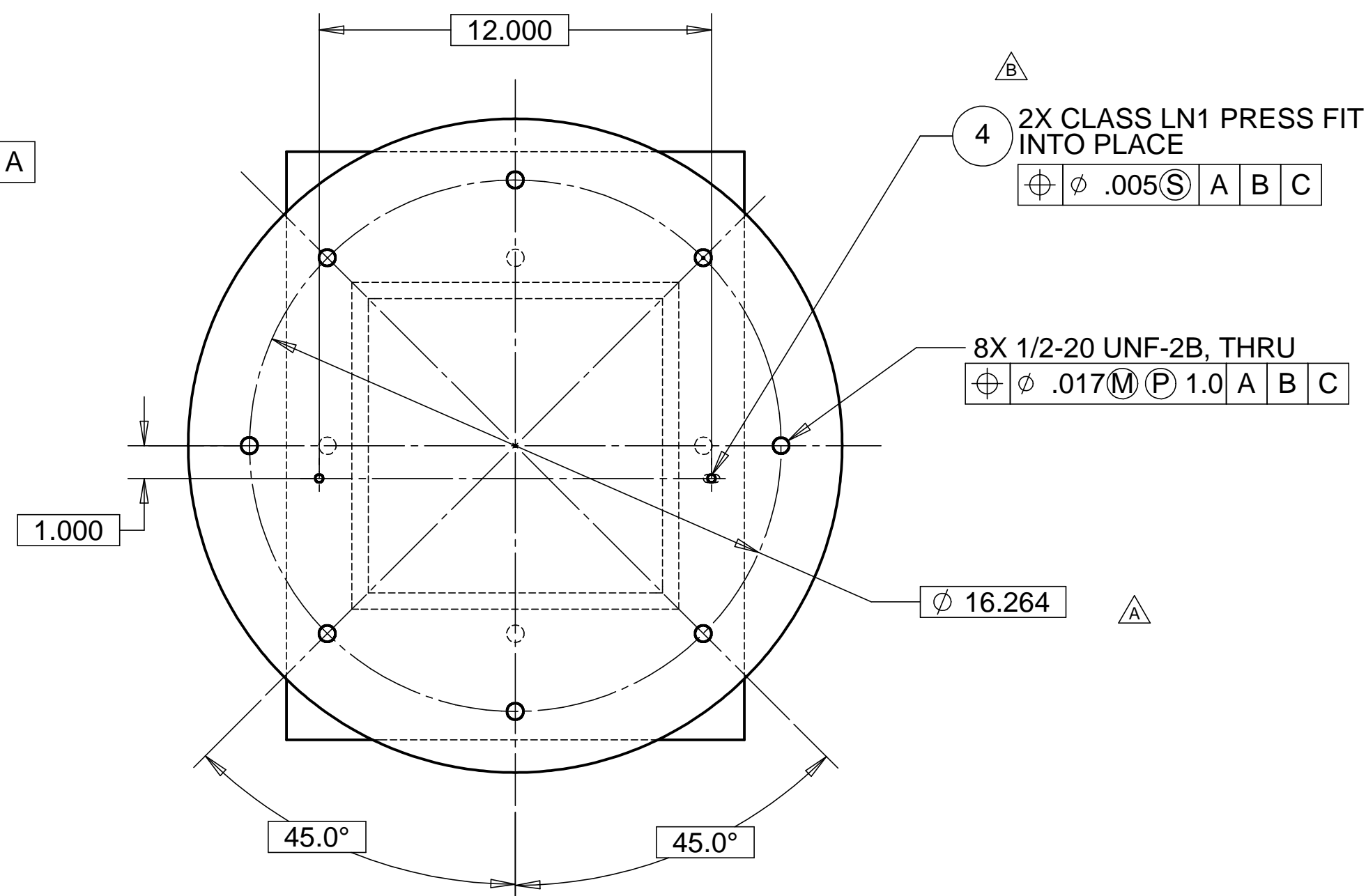
C

C



SECTION A-A

WEIGHT: 140.6 lbs.



B

B

A

A

NOTES: UNLESS OTHERWISE SPECIFIED

- ALL DIMENSIONS IN INCHES
- DIMENSIONS AND TOLERANCING PER ASME Y14.5M-1994
- SURFACE TEXTURE PER ANSI/ASME B 46.1-1985
- REMOVE ALL BURRS AND BREAK SHARP EDGES TO A MAXIMUM OF .015
- ALL INSIDE CORNERS TO BE .015 RADIUS MAX
- COUNTERSINK 82 DEGREES ALL TAPPED HOLES TO MAJOR DIAMETER
- COUNTERSINK 82 DEGREES APPROXIMATELY .03/.06 DEEP ALL DRILLED HOLES
- PARTS TO BE THOROUGHLY CLEANED TO REMOVE ALL OIL, GREASE, DIRT AND CHIPS
- PART NUMBER (DRAWING NO., DASH NO., REVISION NO., SERIAL NO.) TO BE CLEARLY MARKED ON THE PART ITSELF.
- PAINT:
ALL VISIBLE SURFACES
MEDIUM BLUE SHERWIN WILLIAMS (POLANE (R) T-PLUS,
POLYURETHANE ENAMEL.) #SW-F63TX-L-2822-5864.
PRIME WITH SHERMAN-WILLIAMS INDUSTRIAL WASH PRIMER P60G2.
- "OXI SOLV RUST INHIBITER" TO BE APPLIED PER MFG. INSTRUCTIONS TO ALL UNPAINTED SURFACES.
BOTH TAPPED AND THRU BOLT HOLES WILL BE PLUGGED DURING APPLICATION.

| QTY | DESCRIPTION | MATERIAL | |
|-----|-------------|----------------------------------|--------------|
| 2 | 1 | PLATE, .75 THK | A36 STEEL |
| 2 | 1 | PLATE, .50 THK | A36 STEEL |
| 3 | 1 | SQ. TUBING, 10.0 X .50 WALL | A500 GRADE B |
| 4 | 2 | DOWEL PIN, .250 DIA. X 1.00 LONG | |

PARTS LIST

| | | | | | |
|---|--------------|--|-------------|---|----------------|
| UNLESS OTHERWISE SPECIFIED: DIMENSIONS ARE IN INCHES -TOLERANCES- | | CAD GENERATED DRAWING, DO NOT MANUALLY UPDATE DO NOT SCALE DRAWING | | HYTEC, INC | |
| DECIMALS .X = +/- .1 .XX = +/- .03 .XXX = +/- .010 | | ANGULAR = +/- .30° SURFACE FINISH = 250 | | TITLE LIGO BSC X-FINE ASSEMBLY REPLACEMENT WELDMENT | |
| FINISH | DESIGNED | SIGNATURE | DATE | DWG. NO. | SIZE SHEET NO. |
| | DRAWN | ROGER L. SMITH | 12-05-97 | D972107 | D 1 of 1 |
| PART NO. | CHECKED | ENGR. | APPROVED | SCALE | REVISION |
| D972107-1 | B. WEINSTEIN | ERIC PONSLET | T. THOMPSON | 1/4 | C |

8

7

6

5

4

3

2

1