

8

7

6

5

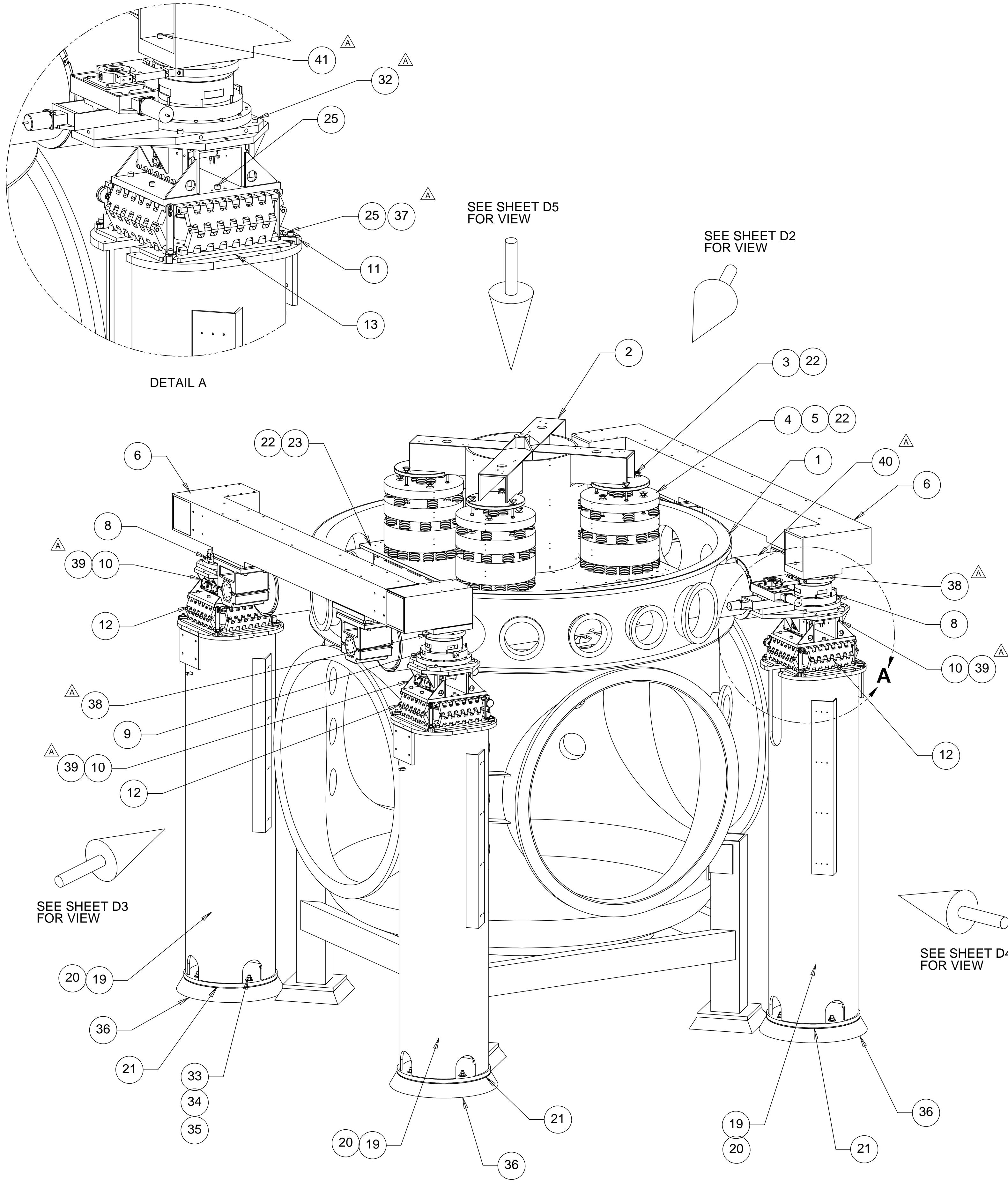
4

3

2

1

REVISIONS			
REV	DESCRIPTION	DATE	APPROVED
A	SEE ECN# D972001-A FOR CHANGE LIST	04/21/99	T. THOMPSON
B	SEE ECN# D972001-B FOR CHANGE LIST	05/04/99	T. THOMPSON



- 1 ASSEMBLY FOR HANFORD - TRANSLATING FINE FLEXURE
- 3 ASSEMBLY FOR LIVINGSTON - TRANSLATING FINE FLEXURE
- 5 ASSEMBLY FOR HANFORD - STATIONARY FINE FLEXURE
- 7 ASSEMBLY FOR LIVINGSTON - STATIONARY FINE FLEXURE

ITEM NO.	QTY.	QTY.	QTY.	QTY.	PART NO.	DESCRIPTION
1	1	1	1	1	PSI-V049-4-003	BSC CHAMBER
2	1	1	1	1	D972210-1	DOWNTUBE / SUPPORT TABLE ASSEMBLY
3	12	12	12	12	D972217-5	ISOLATION STACK LEG SCREW #3
4	4	4	4	4	D972201-1	ISOLATION STACK LEG ASSEMBLY
5	12	12	12	12	D972217-9	ISOLATION STACK SAFETY PIN
6	2	2	2	2	D972118-1	CROSSBEAM WELDMENT
7	32	32	32	32	D972146-1	SCISSORS TABLE MOUNTING CLAMP
8	2	2	2	2	D972102-1	COARSE X-Y DRIVEN TRANSLATION ASSEMBLY
9	2	2	2	2	D972103-1	COARSE X-Y FLOATING TRANSLATION ASSEMBLY
10	4	4	0	0	D972101-1	FLEXURE MOUNT ASSEMBLY
11	16	16	16	16	D972418-1	PIER PLATE ADAPTOR MOUNTING CLAMP
12	4	4	4	4	D972104-1	SCISSORS TABLE ASSEMBLY
13	4	4	4	4	D972904-1	PIER PLATE ADAPTOR
14	2	2	2	2	D792121-1	SUPPORT TUBE WELDMENT
15	4	4	4	4	D972122-1	EXPANSION BELLOWS
16	4	4	4	4	D972123-1	SUPPORT TUBE SPHERICAL MOUNT
17	4	4	4	4	D972124-1	SUPPORT TUBE MOUNT CAP
18	4	4	4	4	D972125-1	SUPPORT TUBE MOUNT BASE
19	0	4	0	4	D972128-3	SUPPORT PIER (FOR LIVINGSTON)
20	4	0	4	0	D972128-1	SUPPORT PIER (FOR HANFORD)
21	4	4	4	4	D972126-1	PIER LEVELING & GROUT PLATE
22	60	60	60	60	WV-38-.75 X .089	VENTED WASHER, U-C COMPONENTS, INC.
23	36	36	36	36		SOC HD SST SCREW, 3/8-24 UNF-2A X 1.25 LG, Ag PLATED
24	32	32	32	32		SOC HD SCREW, 1/2-13 UNC-2A X 3.50 LG
25	48	48	48	48		SOC HD SST SCREW, 1/2-13 UNC-2A X 1.75 LG
26	4	4	4	4	MDC# 191028	COPPER GASKET
27	4	4	4	4	MDC# 191020	COPPER GASKET
28	120	120	120	120		MOUNTING HARDWARE SUPPLIED WITH PSI CHAMBER
29	96	96	96	96		SOC HD SST SCREW, 5/16-24 UNF-2A X 1.50 LG, Ag PLATED
30	16	16	16	16		SOC HD SCREW, 5/8-18 UNF-2A X 4.0 LG
31	16	16	16	16		SOC HD SCREW, 3/4-16 UNF-2A X 2.75 LG
32	16	16	16	16		SOC HD SST SCREW, 1/2-20 UNF-2A X 1.75 LG
33	16	16	16	16	96802004 00256702	HILTI THREADED ANCHOR HILTI ADHESIVE CAPSULE
34	16	16	16	16		NUT, 3/4-10 UNC-2B
35	16	16	16	16		FLAT WASHER, 3/4
36	AR	AR	AR	AR	1107	DAYTON SUPERIOR, 1107 ADVANTAGE GROUT
37	16	16	16	16	318-12-A-01	FLAT WIDE WASHER, 1/2, BARNHILL BOLT OR EQUIV.
38	4	4	4	4	D972142-1	SPHERICAL MOUNTING PAD
39	0	0	4	4	D972107-1	FINE FLEXURE MOUNT REPLACEMENT
40	4	4	4	4		BELLOWS GUARD - SUPPLIED BY USER
41	16	16	16	16		SOC HD SCREW, 1/2-13 UNC-2A X 3.5 LG
42	4	4	4	4		BELLOWS GUARD CLAMP - SUPPLIED BY USER
DASH NO.	-1	-3	-5	-7		

PARTS LIST

UNLESS OTHERWISE SPECIFIED: DIMENSIONS ARE IN INCHES -TOLERANCES-		CAD GENERATED DRAWING, DO NOT MANUALLY UPDATE DO NOT SCALE DRAWING		<p style="text-align: center;">HYTEC, INC</p> <p style="text-align: center;">TITLE LIGO BSC TOP ASSEMBLY</p>		
DECIMALS .XX = +/- .03 .XXX = +/- .010	ANGULAR = +/- .30° SURFACE FINISH = 250	SIGNATURE	DATE			
FINISH		DESIGNED ROGER L. SMITH	5-28-97	DWG. NO. D972001	SIZE D	
		DRAWN ROGER L. SMITH	5-28-97			SHEET NO. 1 of 5
PART NO. D972001-1		CHECKED HARRY SALAZAR	5-12-98			
		ENGR. T. THOMPSON	5-12-98			
		APPROVED T. THOMPSON	5-12-98	SCALE 1/16	REVISION B	

8

7

6

5

4

3

2

1

8

7

6

5

4

3

2

1

REVISIONS			
REV	DESCRIPTION	DATE	APPROVED
A	SEE ECN# D972001-A FOR CHANGE LIST	04/21/99	T. THOMPSON
B	SEE ECN# D972001-B FOR CHANGE LIST	05/04/99	T. THOMPSON

D

D

C

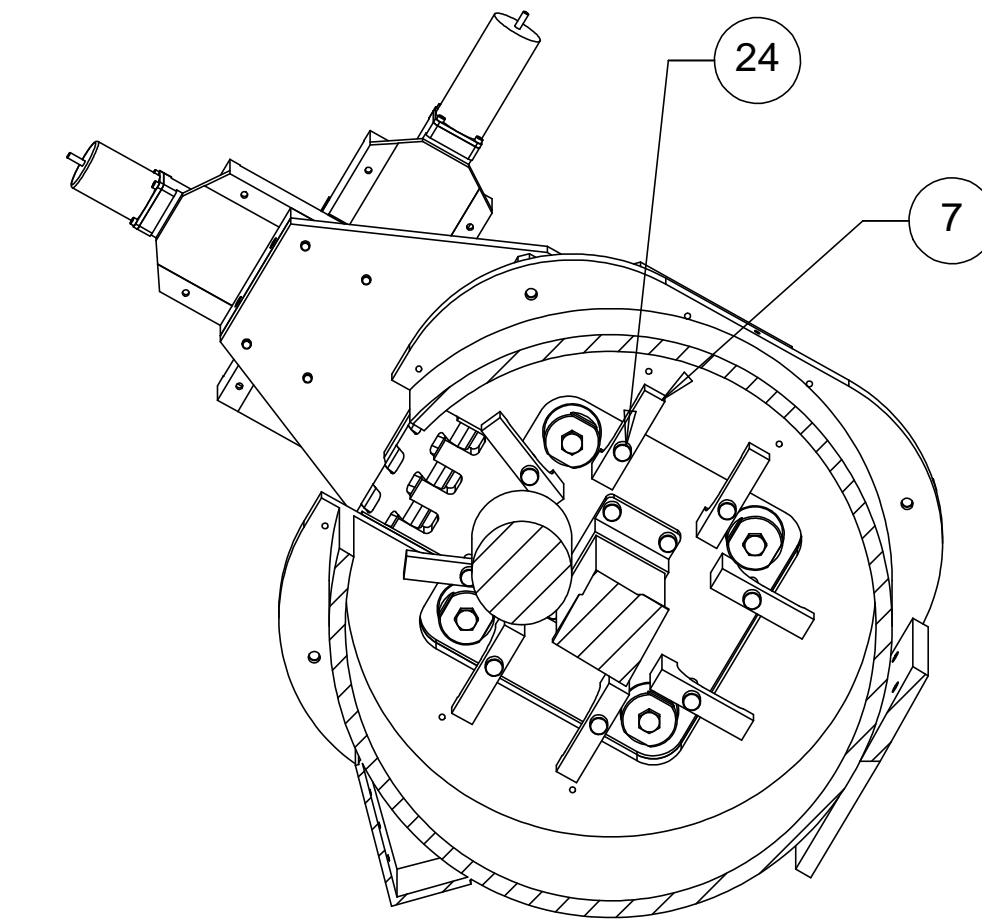
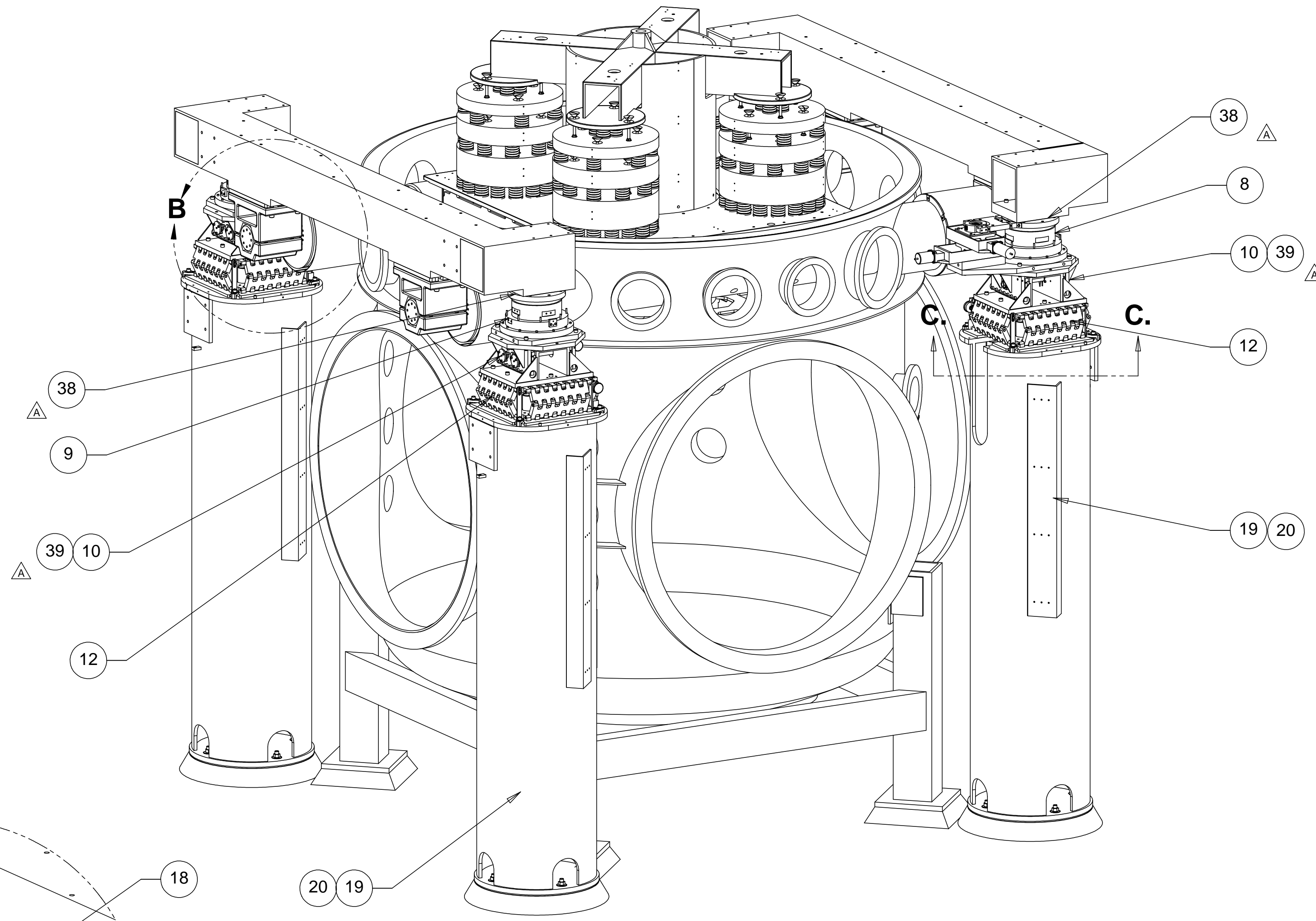
C

B

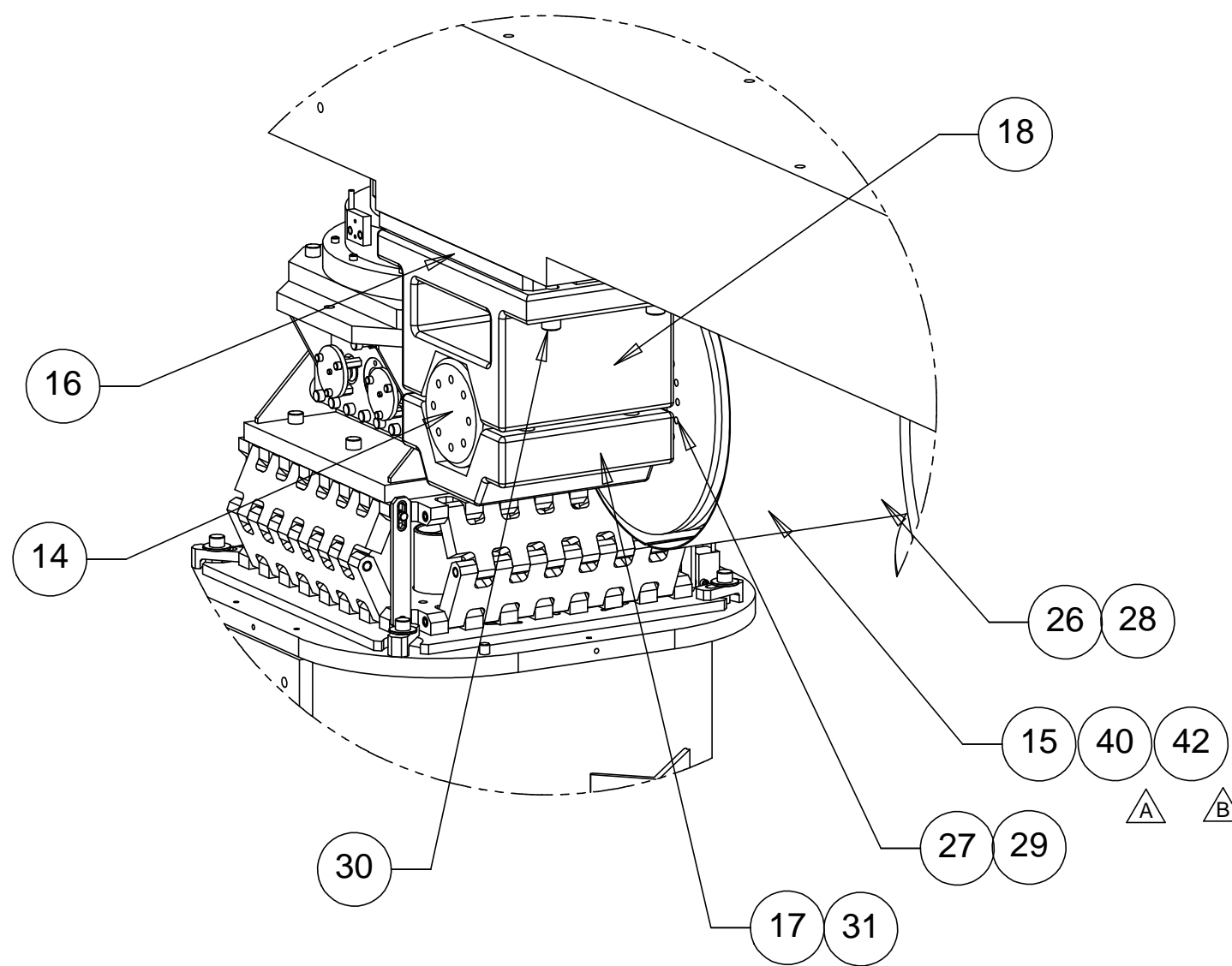
B

A

A



SECTION C-C



DETAIL B

PARTS LIST			
UNLESS OTHERWISE SPECIFIED: DIMENSIONS ARE IN INCHES -TOLERANCES-	CAD GENERATED DRAWING, DO NOT MANUALLY UPDATE DO NOT SCALE DRAWING		HYTEC, INC TITLE LIGO BSC TOP ASSEMBLY
	DECIMALS .XX = +/- .03 .XXX = +/- .010	ANGULAR = +/- .30° SURFACE FINISH = 250	
FINISH	SIGNATURE	DATE	
	DESIGNED	ROGER L. SMITH	5-28-97
	DRAWN	ROGER L. SMITH	5-28-97
	CHECKED	HARRY SALAZAR	5-12-98
	ENGR.	T. THOMPSON	5-12-98
	APPROVED	T. THOMPSON	5-12-98
PART NO. D972001-1	SCALE	NONE	REVISION B

8

7

6

5

4

3

2

1

8

7

6

5

4

3

2

1

REVISIONS			
REV	DESCRIPTION	DATE	APPROVED
A	SEE ECN# D972001-A FOR CHANGE LIST	04/21/99	T. THOMPSON
B	SEE ECN# D972001-B FOR CHANGE LIST	05/04/99	T. THOMPSON

D

D

C

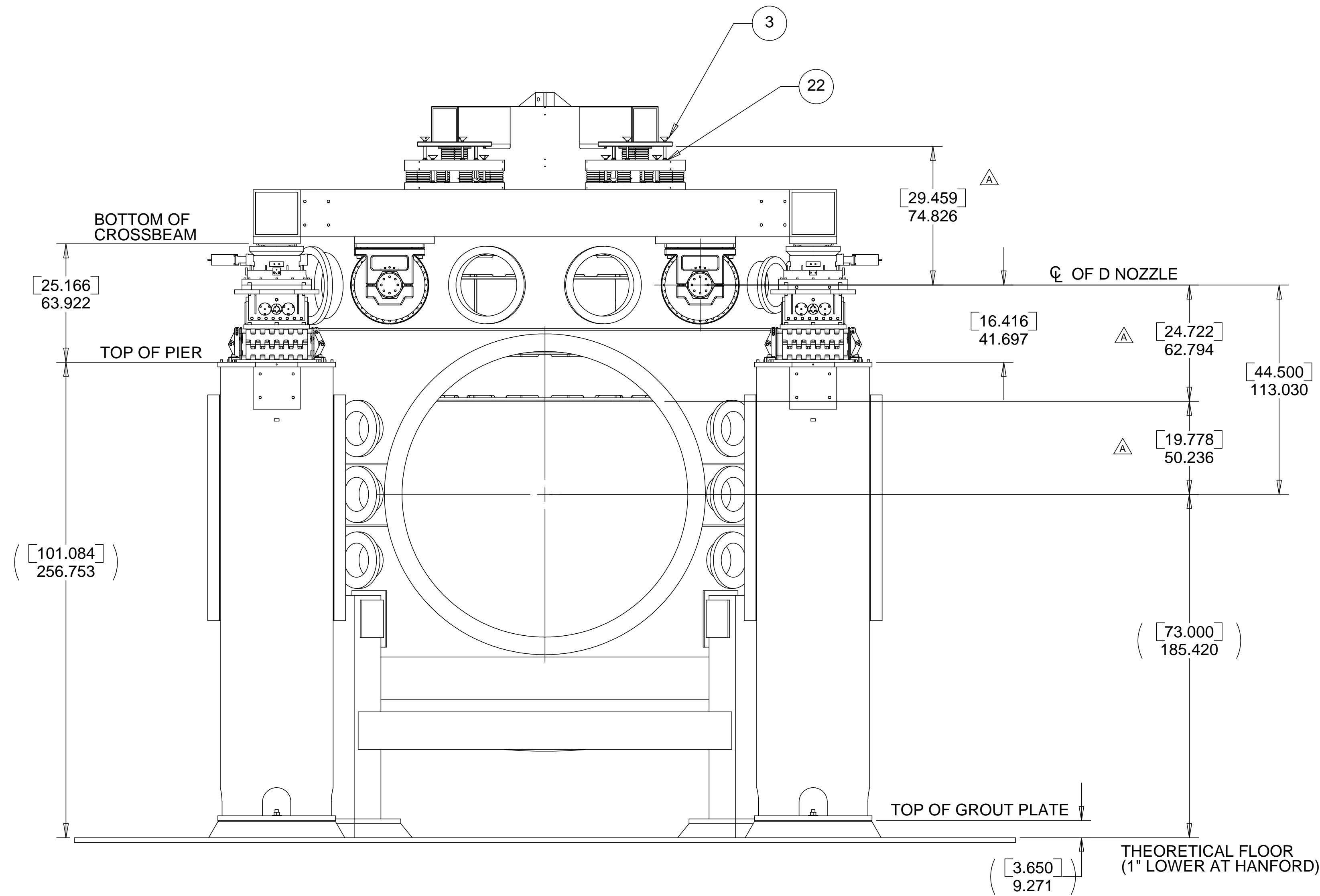
C

B

B

A

A



As Built Configuration 4/12/99
 Spring Height = 2.516 inches
 Stack Height = 22.459 inches
 Shim Height = .275 inches

NOTE: LIVINGSTON CONFIGURATION SHOWN

IN
CM

PARTS LIST			
UNLESS OTHERWISE SPECIFIED: DIMENSIONS ARE IN INCHES -TOLERANCES-	DECIMALS	ANGULAR = +/- .30°	CAD GENERATED DRAWING. DO NOT MANUALLY UPDATE DO NOT SCALE DRAWING
	.XX = +/- .03	SURFACE FINISH = 250	
FINISH	SIGNATURE	DATE	HYTEC, INC TITLE LIGO BSC TOP ASSEMBLY
DESIGNED	ROGER L. SMITH	5-28-97	
DRAWN	ROGER L. SMITH	5-28-97	
CHECKED	HARRY SALAZAR	5-12-98	
PART NO. D972001-1	ENGR.	T. THOMPSON	5-12-98
	APPROVED	T. THOMPSON	5-12-98
SCALE 1/1		DWG. NO. D972001	SIZE SHEET NO. D 3 of 5
			REVISION B

8

7

6

5

4

3

2

1

8

7

6

5

4

3

2

1

REVISIONS			
REV	DESCRIPTION	DATE	APPROVED
A	SEE ECN# D972001-A FOR CHANGE LIST	04/21/99	T. THOMPSON
B	SEE ECN# D972001-B FOR CHANGE LIST	05/04/99	T. THOMPSON

D

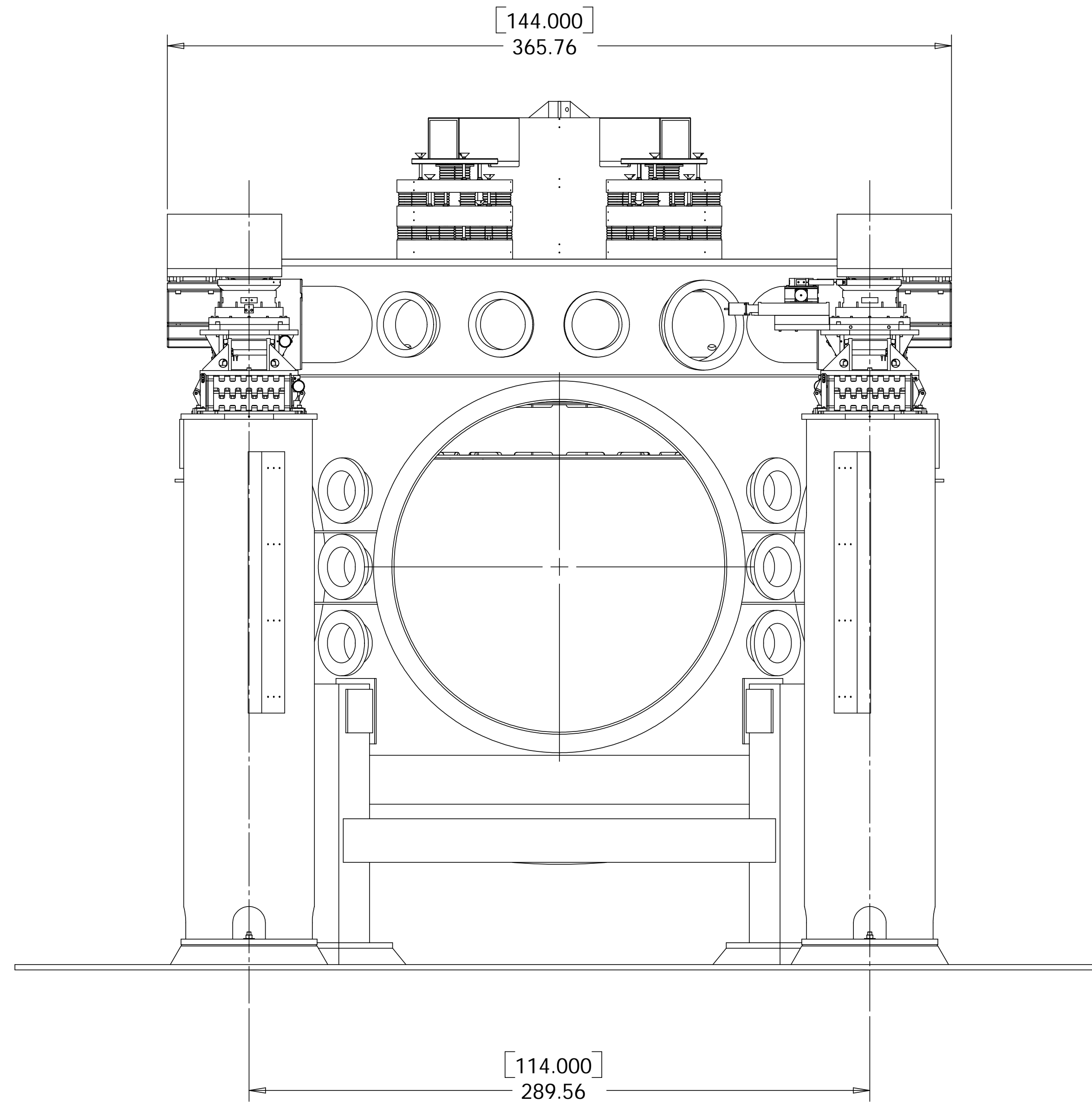
D

C

C

B

B



A

A

8

7

6

5

4

3

2

1

PARTS LIST			
UNLESS OTHERWISE SPECIFIED: DIMENSIONS ARE IN INCHES -TOLERANCES-	CAD GENERATED DRAWING, DO NOT MANUALLY UPDATE DO NOT SCALE DRAWING		HYTEC, INC TITLE LIGO BSC TOP ASSEMBLY
	DECIMALS .XX = +/- .03 .XXX = +/- .010	ANGULAR = +/- .30° SURFACE FINISH = 250	
FINISH	SIGNATURE	DATE	SIZE SHEET NO.
	DESIGNED ROGER L. SMITH	5-28-97	D 4 of 5
PART NO. D972001-1	DRAWN ROGER L. SMITH	5-12-98	REVISION B
	CHECKED HARRY SALAZAR	5-12-98	SCALE 1/16
	ENGR. T. THOMPSON	5-12-98	
	APPROVED T. THOMPSON	5-12-98	

8

7

6

5

4

3

2

1

REVISIONS			
REV	DESCRIPTION	DATE	APPROVED
A	SEE ECN# D972001-A FOR CHANGE LIST	04/21/99	T. THOMPSON
B	SEE ECN# D972001-B FOR CHANGE LIST	05/04/99	T. THOMPSON

D

D

([142.926])
363.03

([114.000])
289.56

14

14

([114.000])
289.56

([144.000])
365.76

C

C

B

B

A

A

8

7

6

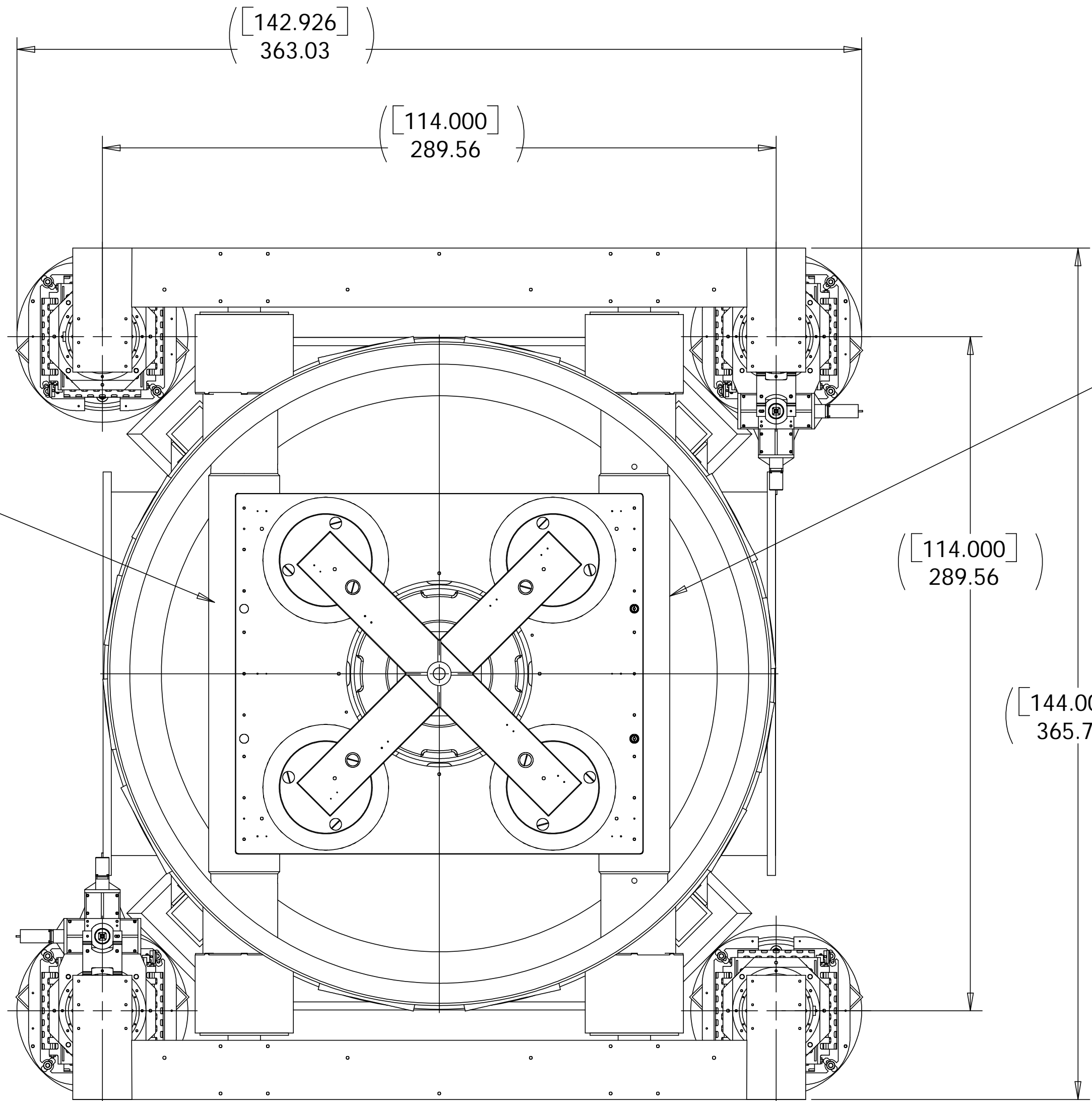
5

4

3

2

1



PARTS LIST			
UNLESS OTHERWISE SPECIFIED: DIMENSIONS ARE IN INCHES -TOLERANCES-	CAD GENERATED DRAWING, DO NOT MANUALLY UPDATE DO NOT SCALE DRAWING		HYTEC, INC TITLE LIGO BSC TOP ASSEMBLY
	DECIMALS .XX = +/- .03 .XXX = +/- .010	ANGULAR = +/- .30° SURFACE FINISH = 250	
FINISH	DESIGNED	SIGNATURE	DATE
	DRAWN	ROGER L. SMITH	5-28-97
	CHECKED	HARRY SALAZAR	5-12-98
PART NO. D972001-1	ENGR.	T. THOMPSON	5-12-98
	APPROVED	T. THOMPSON	5-12-98
		SCALE 1/16	REVISION B