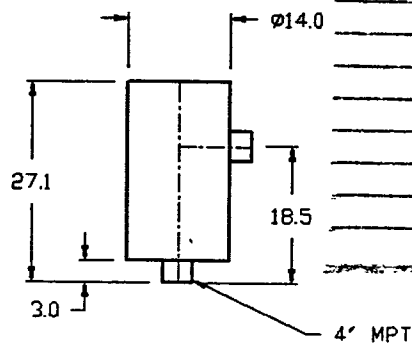


**PROCESS SYSTEMS INTERNATIONAL
DOCUMENT REVIEW CHECKLIST**

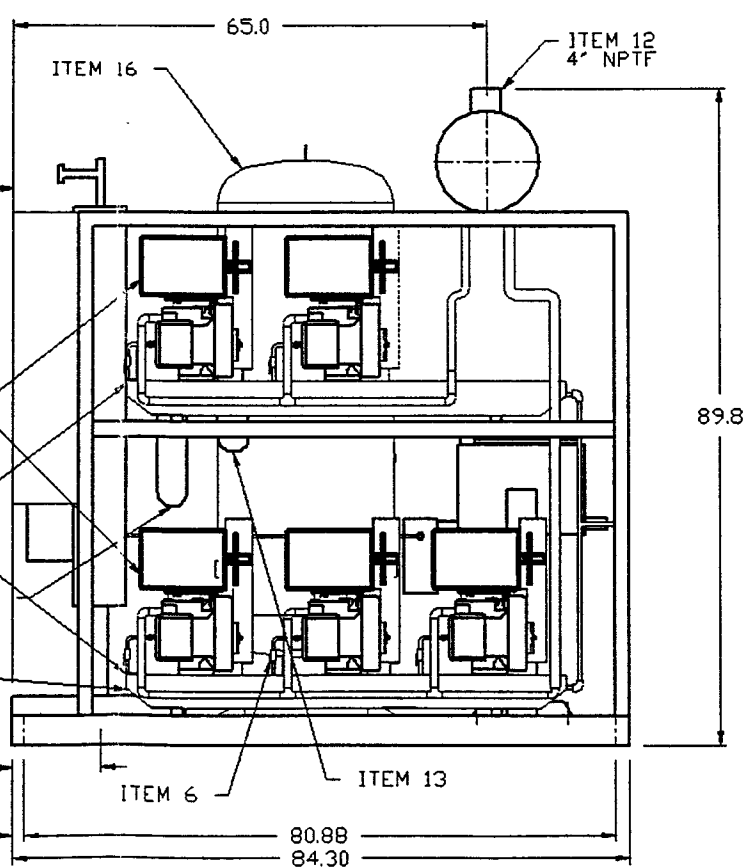
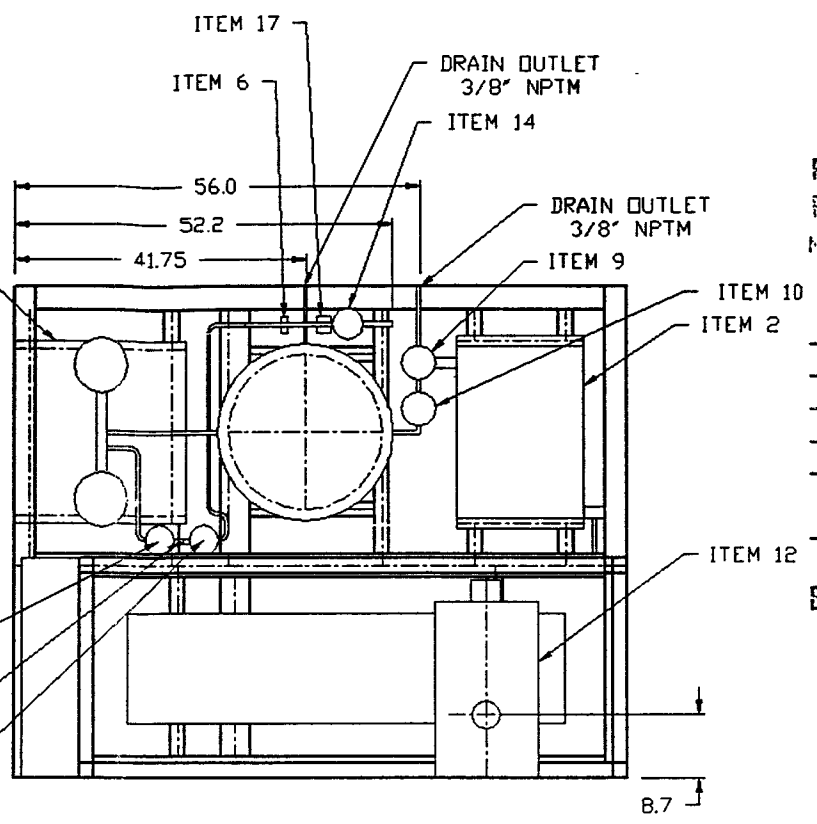
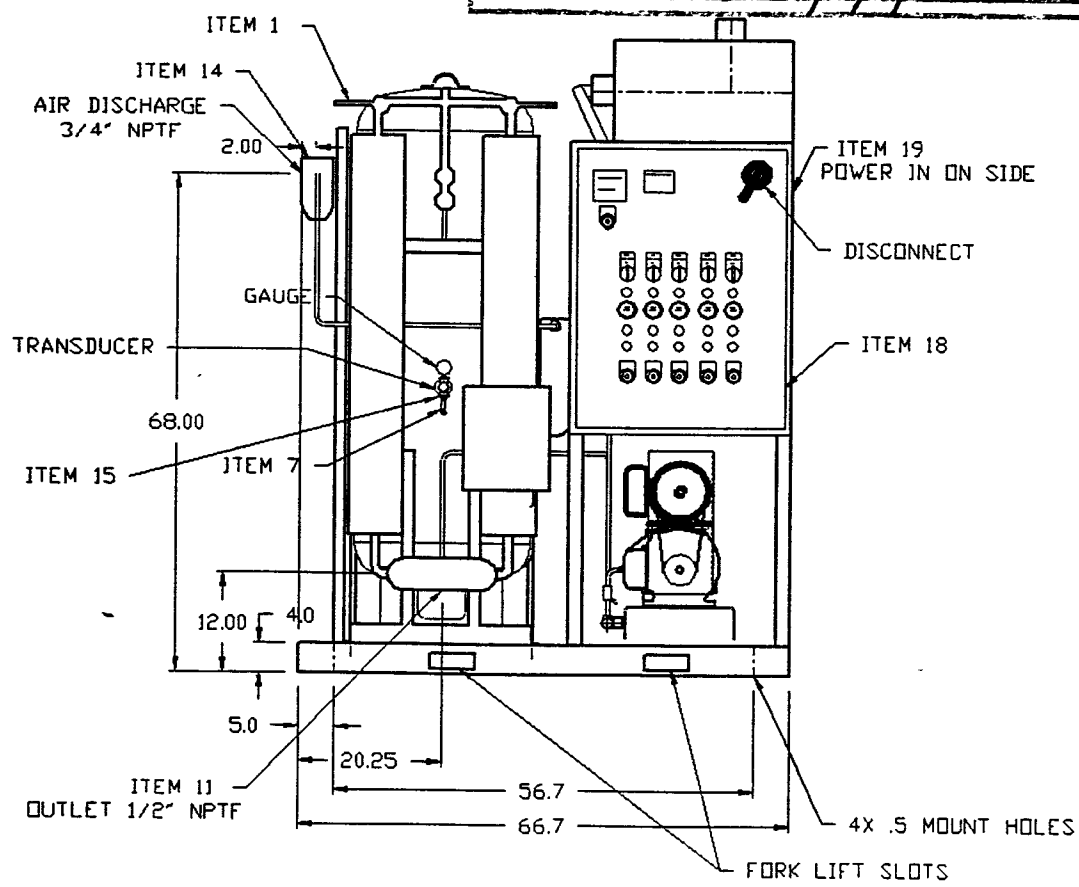
PROJECT NAME: L16-0
PSI DOC. NO. V049-8-299

FILTER DIMS ONK



BY / DATE	ITEM
PROJECT ENG <u>Am 6/11/97</u>	ITEM 1
MECHANICAL	
STRESS	
ELECTRICAL	
PROCESS	
MFG. ENG.	
MANUF	
Q.A.	
DRAFTING <u>RES 6/10/97</u>	

VENDOR NAME: JPL SAMPLE CONNECTION WITH ITEM 6
 REVISION NO: A8
 SUBMITTAL NO: 7
 STATUS: rev/app



**PROCESS SYSTEMS INTERNATIONAL
DOCUMENT APPR**

REV	DATE	REVISION	DATE	ECN	NAME	CHKD
A-1	ALL	RELEASE FOR QUOTE	4/25/96		REP	DFG
A-2	ALL	ADDED CUSTOMER REQUESTED DATA	4/25/96		REP	DFG
A-3	ALL	REDESIGNED TO MEET CUSTOMER REQUIREMENTS	7/26/96		REP	DFG
A-4	ALL	ADDED NOTE - 1/2" NPTM OUTLET VALVES TO TANK	8/12/96		REP	DFG
A-5	ALL	ADDED NOTE - 1/2" NPTM OUTLET VALVES TO TANK	8/12/96		REP	DFG
A-6	ALL	ADDED ELECTRIC BRUSH TO AIR RECEIVER	4/25/97		REP	TBL
A-7	ALL	RE-DESIGN PLUMBING	5/15/97		REP	

PROJECT NAME: _____
 PSI DOC. NO. _____
 NOTE: THIS REVIEW DOES NOT RELIEVE THE SELLER OR CONTRACTOR OF ANY OBLIGATIONS UNDER THE P.O. OR CONTRACT.
 X CA = FINAL APPROVAL
 AS = APPROV AS NOTED - REVISE & RESUBMIT
 AF = APPROVED FOR FABRICATION
 NA = NOT APPROVED
 RP = RELEASED FOR PROCUREMENT OF MATERIALS ONLY
 RR = REVISE & RESUBMIT

BY Paul B... LIGO ASSOCIATE 6/23/97

ITEM	PART#	MANUFACTURER	DESCRIPTION	QTY
1	DH-60 NEMA 4	HANKISON	DESICCANT DRYER	1
2	UPA-50	THERMAL TRANSFER	AIR COOLED AFTERCOOLER	1
3	SL016500AJ	POWEREX	SCROLL PUMP	5
4	NCR22307AV	BAL DIR	208/230/460-3-60 MOTOR	5
5	IP087700AV	POWEREX	CHECK VALVE	5
6	AM083000AV	NIBCO	ISOLATION VALVE 3/4	2
7	V-215100AV	POWEREX	ASME SAFETY RELIEF VALVE 3	3
8	V-209000AV	POWEREX	ASME SAFETY RELIEF VALVE 5	5
9	S-100	THERMAL TRANSFER	MOISTURE SEPARATOR	1
10	T-110-08-48G	HANKISON	PRE/AFTER FILTER	2
11	53P-0420DS	HANKISON	ELECTRONIC DRAIN	3
12	CSL-335P-400	SIL BERG	INTAKE FILTER	1
13	AG0009	ULTRAFILTER	CARBON FILTER	1
14	PE0002	ULTRAFILTER	STERILE FILTER	1
15	HB21A214	ASCO	LOW/LOW/PRESSURE SWITCH 1	1
16	3230	MANCHESTER	AIR RECEIVER	1
17	VBB210B26	ASCO	SYSTEM SHUTOFF SOLENOID 1	1
18	9013FHG2J99	SQUARE-D	LOW PRESSURE SWITCH	1
19	SEE PANEL DWG.	POWEREX	NEMA 4 CONTROL PANEL	1

50 CFM AIR COMPRESSOR

- NOTES:
- 1) ALL INTERCONNECTING PLUMBING TO BE SHOWN
 - 2) PRELIMINARY LAYOUT DRAWING
 - 3) ALLOW 12 INCH CLEARANCE ON ALL SIDES UNLESS OTHERWISE STATED
 - 4) APPROX SHIPPING WT: 1950 LBS
 - 5) MAX. ΔP INLET PRESSURE .36 PSIG
 - 6) NO HOLE PROVIDED. ELECTRICIAN CAN ENTER BOX ON EITHER SIDE PER CONDUIT SIZE AND LOCAL CODES.

PSI DWG # V049-8-299

OTHER LEGENDS ⊖ = MINUS DRAFT ⊕ = PLUS DRAFT	⊙ = ADDITIONAL CONTROL REQ'D ⊚ = BRYNELL HARDNESS	Drawings to conform to the current revision of the following ANSI standards: V14.3 Flat and sect and view drop V14.5 Sectioning and 1st angle
TOLERANCES NOT SPECIFIED XX = .010 XX = .005 XX (REG) = .005	AUTOCAD REL 11 INCH	DO NOT SCALE DRAWING FOR DIMENSIONS
CONFIDENTIAL & PROPRIETARY This drawing is the property of the CAMPBELL GROUP of THE SCOTT TESTER COMPANY and subject to return on demand. Its contents are confidential and must not be disclosed or made free to other parties without the written permission of the company.	Sheet 1 of 1 SCALE 1:13	
MATERIAL	DATE 4/23/96	APPROVED BY 4/25/96
PART NAME LIGO PROJECT	THE CAMPBELL GROUP CAMPBELL HAUSTELB-WAYNE-POWERVINC-POWEREX 100 PRODUCTION DRIVE, HANOVER, OHIO 43030 TEL: (614) 797-4811 FAX: (614) 797-3372	DATE 4/25/96
	REV NO X-156	SIZE D