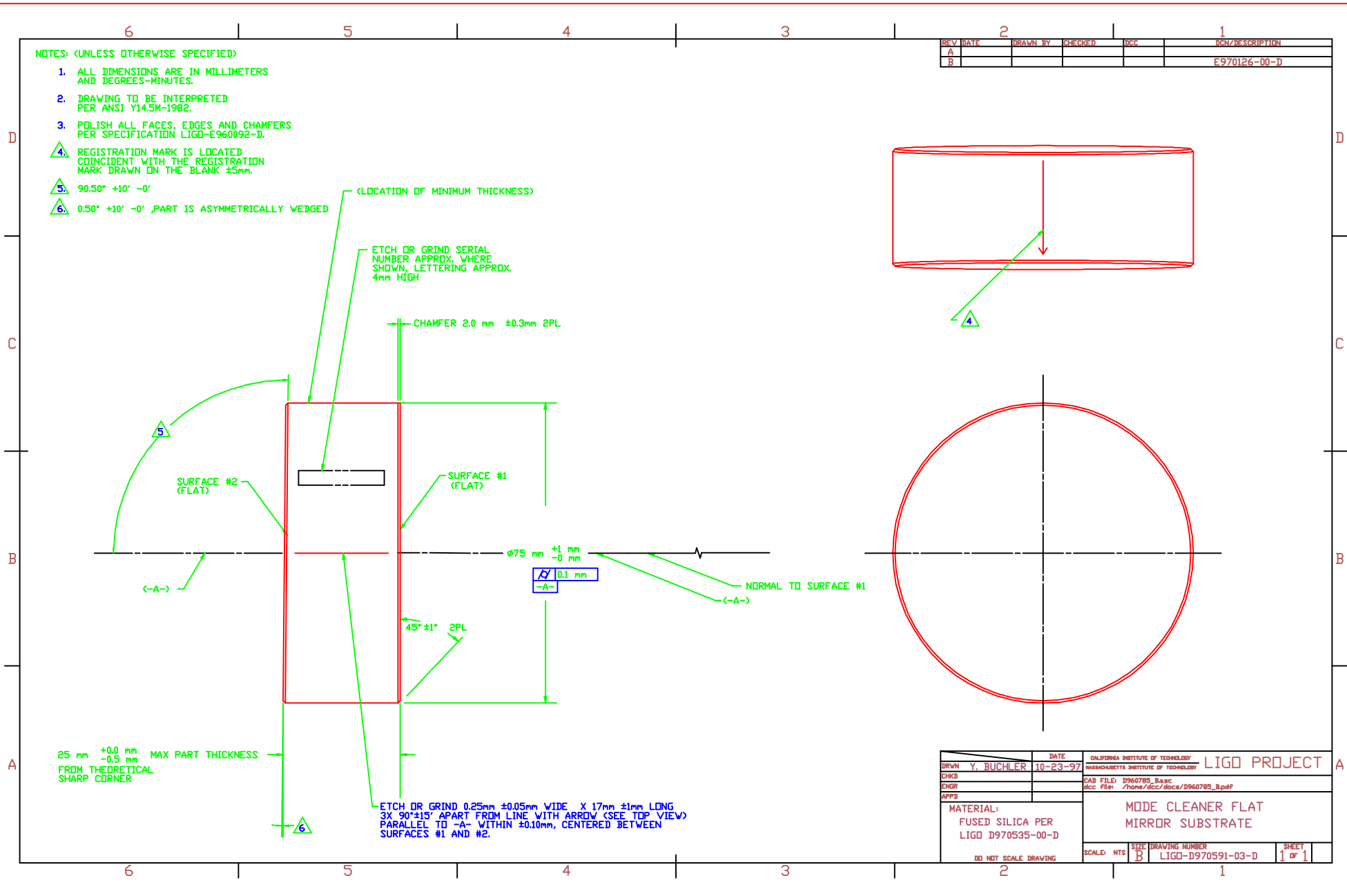


NOTES: (UNLESS OTHERWISE SPECIFIED)

1. ALL DIMENSIONS ARE IN MILLIMETERS AND DEGREES-MINUTES.
2. DRAWING TO BE INTERPRETED PER ANSI Y14.5M-1982.
3. POLISH ALL FACES, EDGES AND CHAMFERS PER SPECIFICATION LIGD-E960092-D.
4. REGISTRATION MARK IS LOCATED COINCIDENT WITH THE REGISTRATION MARK DRAWN ON THE BLANK $\pm 5\text{mm}$.
5. $90.50^\circ +10' -0'$
6. $0.50^\circ +10' -0'$, PART IS ASYMMETRICALLY WEDGED

REV	DATE	DRAWN BY	CHECKED	DCI	RCN/DESCRIPTION
A					
B					E970126-00-D



25 mm +0.0 mm
-0.5 mm
MAX PART THICKNESS
FROM THEORETICAL
SHARP CORNER

ETCH OR GRIND 0.25mm ±0.05mm WIDE X 17mm ±1mm LONG
3X 90°±15' APART FROM LINE WITH ARROW (SEE TOP VIEW)
PARALLEL TO -A- WITHIN ±0.10mm, CENTERED BETWEEN
SURFACES #1 AND #2.

DATE	10-23-97	CALIFORNIA INSTITUTE OF TECHNOLOGY	LIGO PROJECT
DRWN	Y. BUCHLER	MASSACHUSETTS INSTITUTE OF TECHNOLOGY	
CHKD		CAD FILE: D960785_Base	
ENGR		doc FILE: /home/dcc/doc/D960785_B.pdf	
APPD			
MATERIAL: FUSED SILICA PER LIGO D970535-00-D		MODE CLEANER FLAT MIRROR SUBSTRATE	
DO NOT SCALE DRAWING		SCALE: NTS	SHEET 1 OF 1
		SIZE: B	DRAWING NUMBER: LIGO-D970591-03-D