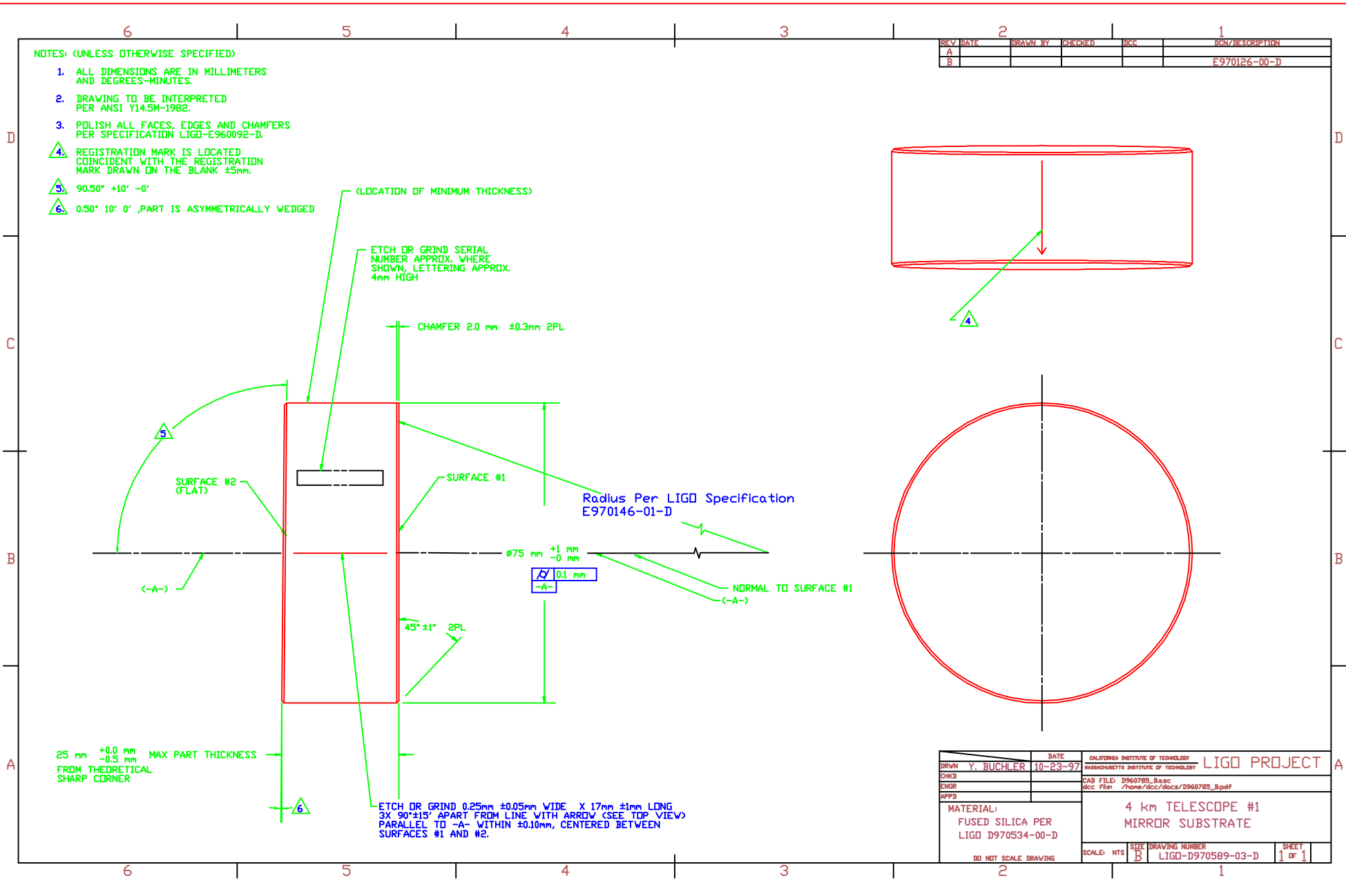


NOTES: (UNLESS OTHERWISE SPECIFIED)

1. ALL DIMENSIONS ARE IN MILLIMETERS AND DEGREES-MINUTES.
2. DRAWING TO BE INTERPRETED PER ANSI Y14.5M-1982.
3. POLISH ALL FACES, EDGES AND CHAMFERS PER SPECIFICATION LIGD-E960092-D.
4. REGISTRATION MARK IS LOCATED COINCIDENT WITH THE REGISTRATION MARK DRAWN ON THE BLANK ±5mm.
5. 90.50° +10' -0'
6. 0.50° 10' 0" PART IS ASYMMETRICALLY WEDGED

REV	DATE	DRAWN BY	CHECKED	DCI	RCN/DESCRIPTION
A					
B					E970126-00-D



(LOCATION OF MINIMUM THICKNESS)

ETCH OR GRIND SERIAL NUMBER APPROX. WHERE SHOWN, LETTERING APPROX. 4mm HIGH

CHAMFER 2.0 mm ±0.3mm 2PL

SURFACE #2 (FLAT)

SURFACE #1

Radius Per LIGD Specification E970146-01-D

∅75 mm +1 mm -0 mm

\sqrt{R} 0.1 mm -A-

NORMAL TO SURFACE #1 (-A-)

45° ±1' 2PL

25 mm +0.0 mm -0.5 mm MAX PART THICKNESS FROM THEORETICAL SHARP CORNER

ETCH OR GRIND 0.25mm ±0.05mm WIDE X 17mm ±1mm LONG 3X 90°±15' APART FROM LINE WITH ARROW (SEE TOP VIEW) PARALLEL TO -A- WITHIN ±0.10mm, CENTERED BETWEEN SURFACES #1 AND #2.

DRWN	Y. BUCHLER	DATE	10-23-97	CALIFORNIA INSTITUTE OF TECHNOLOGY	LIGD PROJECT
CHKD				MASSACHUSETTS INSTITUTE OF TECHNOLOGY	
ENGR				CAD FILE: D960785_Base.dwg	
APPD				doc FILE: /home/dcc/docx/D960785_B.pdf	
MATERIAL:			4 km TELESCOPE #1 MIRROR SUBSTRATE		
FUSED SILICA PER LIGD D970534-00-D			SCALE:	NTS	
DO NOT SCALE DRAWING			SIZE:	D	
			DRAWING NUMBER:	LIGD-D970589-03-D	SHEET 1 OF 1