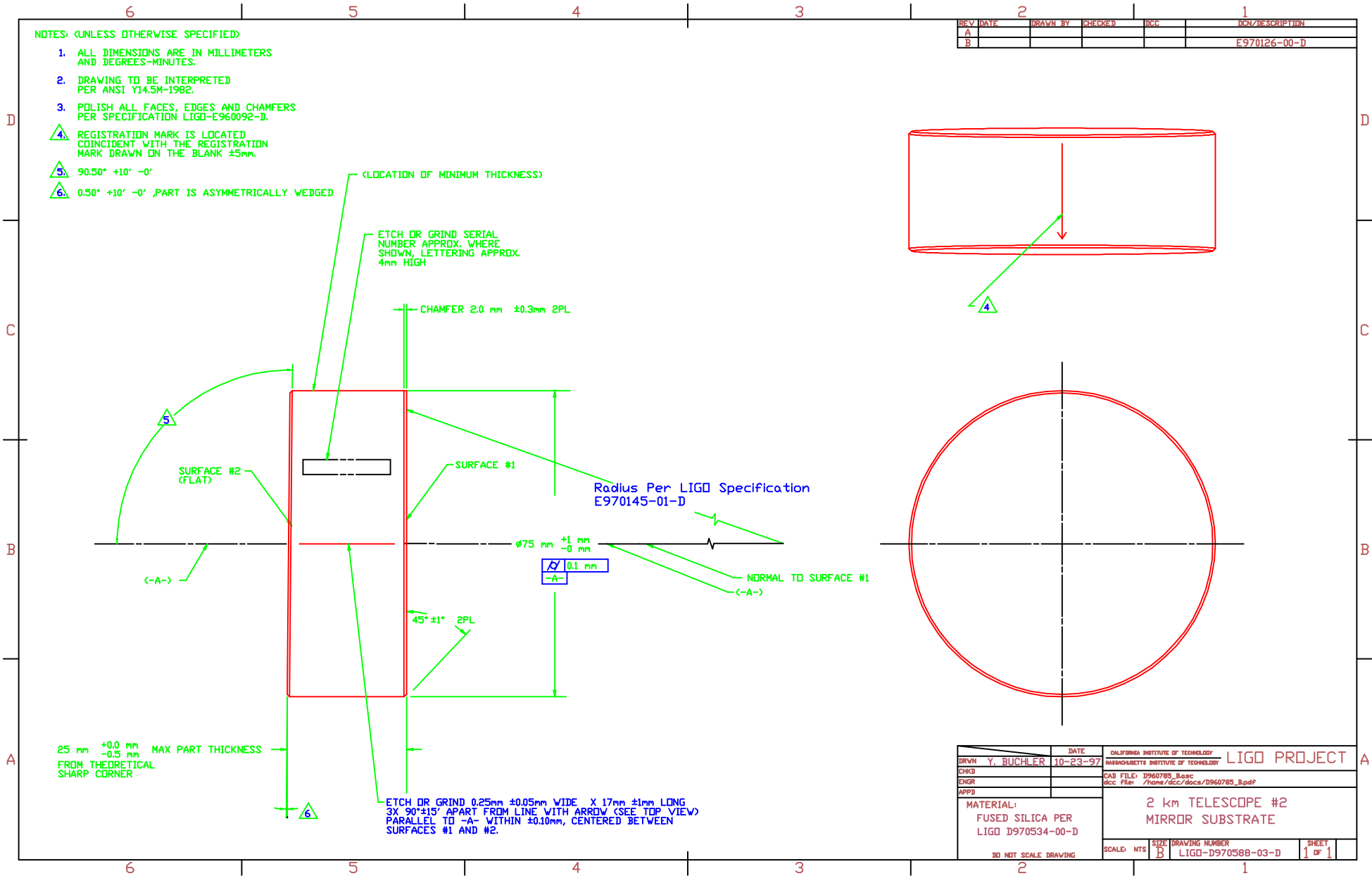


NOTES: (UNLESS OTHERWISE SPECIFIED)

1. ALL DIMENSIONS ARE IN MILLIMETERS AND DEGREES-MINUTES.
2. DRAWING TO BE INTERPRETED PER ANSI Y14.5M-1982.
3. POLISH ALL FACES, EDGES AND CHAMFERS PER SPECIFICATION LIGD-E960092-D.
4. REGISTRATION MARK IS LOCATED COINCIDENT WITH THE REGISTRATION MARK DRAWN ON THE BLANK $\pm 5\text{mm}$.
5. $90.50^\circ +10' -0'$
6. $0.50^\circ +10' -0'$, PART IS ASYMMETRICALLY WEDGED

REV	DATE	DRAWN BY	CHECKED	DCI	DCN/DESCRIPTION
A					
B					E970126-00-D



(LOCATION OF MINIMUM THICKNESS)

ETCH OR GRIND SERIAL NUMBER APPROX. WHERE SHOWN, LETTERING APPROX. 4mm HIGH

CHAMFER 2.0 mm $\pm 0.3\text{mm}$ 2PL

SURFACE #2 (FLAT)

SURFACE #1

Radius Per LIGD Specification E970145-01-D

$\varnothing 75\text{ mm}$ $+1\text{ mm}$ -0 mm

\sqrt{R} 0.1 mm

NORMAL TO SURFACE #1 (-A-)

$45^\circ \pm 1'$ 2PL

25 mm $+0.0\text{ mm}$ -0.5 mm MAX PART THICKNESS FROM THEORETICAL SHARP CORNER

ETCH OR GRIND 0.25mm $\pm 0.05\text{mm}$ WIDE X 17mm $\pm 1\text{mm}$ LONG $3 \times 90^\circ \pm 15'$ APART FROM LINE WITH ARROW (SEE TOP VIEW) PARALLEL TO -A- WITHIN $\pm 0.10\text{mm}$, CENTERED BETWEEN SURFACES #1 AND #2.

DATE	10-23-97	CALIFORNIA INSTITUTE OF TECHNOLOGY	LIGO PROJECT
DRWN	Y. BUCHLER	MASSACHUSETTS INSTITUTE OF TECHNOLOGY	
CHKD		CAD FILE: D960785_Base.dwg	
ENGR		doc FILE: /home/dcc/doc/D960785_B.pdf	
APPD			
MATERIAL:	2 km TELESCOPE #2 MIRROR SUBSTRATE		
FUSED SILICA PER LIGD D970534-00-D	SCALE: NTS	SIZE: B	DRAWING NUMBER: LIGO-D970588-03-D
3D NET SCALE DRAWING			SHEET 1 OF 1