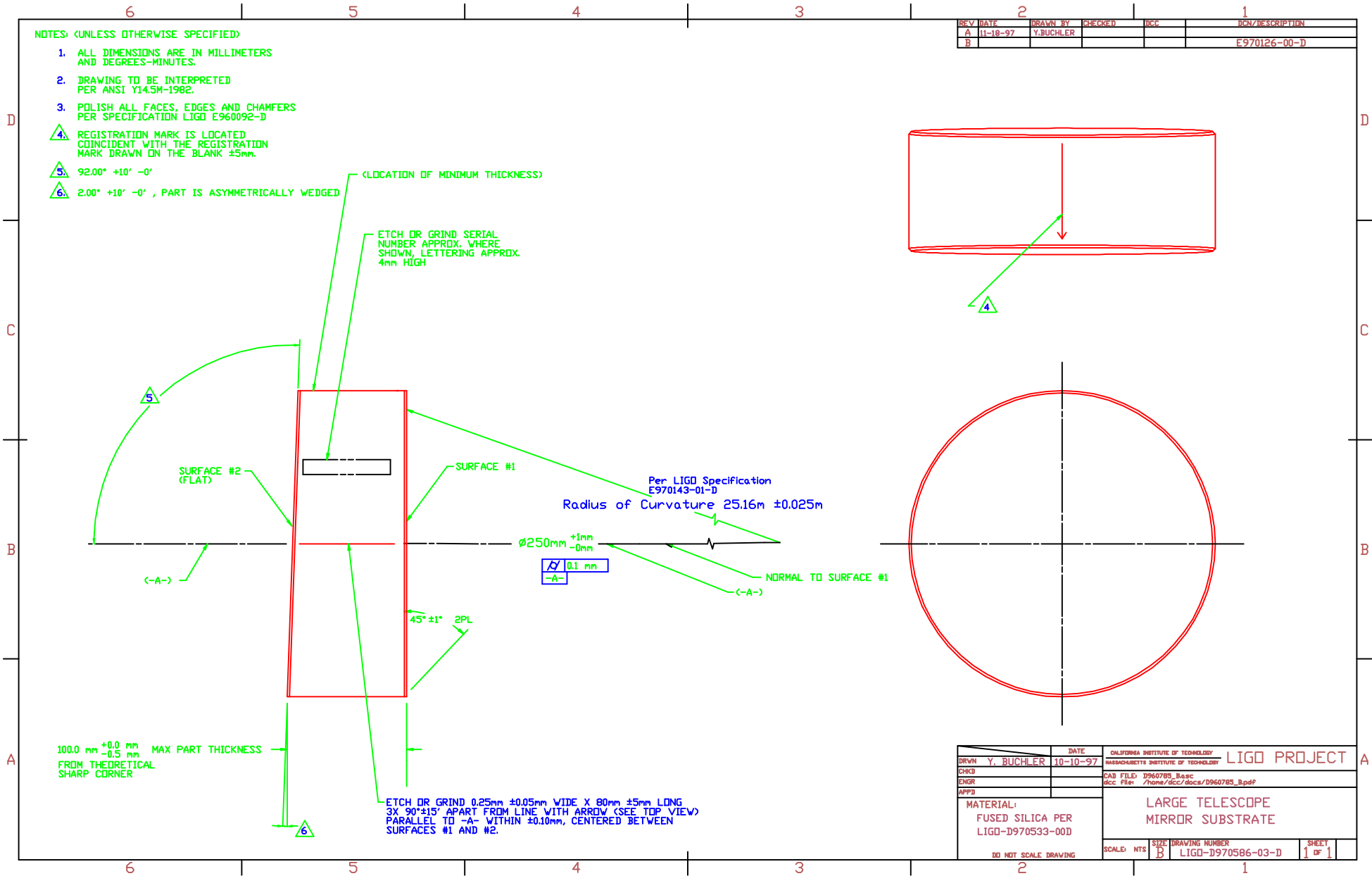


NOTES: (UNLESS OTHERWISE SPECIFIED)

1. ALL DIMENSIONS ARE IN MILLIMETERS AND DEGREES-MINUTES.
2. DRAWING TO BE INTERPRETED PER ANSI Y14.5M-1982.
3. POLISH ALL FACES, EDGES AND CHAMFERS PER SPECIFICATION LIGO E960092-D
4. REGISTRATION MARK IS LOCATED COINCIDENT WITH THE REGISTRATION MARK DRAWN ON THE BLANK ±5mm.
5. 92.00° +10' -0'
6. 2.00° +10' -0', PART IS ASYMMETRICALLY WEDGED

REV	DATE	DRAWN BY	CHECKED	DCI	RCN/DESCRIPTION
A	11-18-97	Y.BUCHLER			
B					E970126-00-D



(LOCATION OF MINIMUM THICKNESS)

ETCH OR GRIND SERIAL NUMBER APPROX. WHERE SHOWN, LETTERING APPROX. 4mm HIGH

SURFACE #2 (FLAT)

SURFACE #1

Per LIGO Specification E970143-01-D  
Radius of Curvature 25.16m ±0.025m

Ø250mm +1mm -0mm  
0.1 mm  
-A-

NORMAL TO SURFACE #1  
(-A-)

45° ±1' 2PL

100.0 mm +0.0 mm MAX PART THICKNESS  
-0.5 mm FROM THEORETICAL SHARP CORNER

ETCH OR GRIND 0.25mm ±0.05mm WIDE X 80mm ±5mm LONG  
3X 90° ±15' APART FROM LINE WITH ARROW (SEE TOP VIEW)  
PARALLEL TO -A- WITHIN ±0.10mm, CENTERED BETWEEN SURFACES #1 AND #2.

DATE	CALIFORNIA INSTITUTE OF TECHNOLOGY	LIGO PROJECT
10-10-97	MASSACHUSETTS INSTITUTE OF TECHNOLOGY	
DRWN Y. BUCHLER	CAD FILE: D960785_Base	
CHKD	Doc FILE: /home/dcc/doc/D960785_B.pdf	
ENGR		
APPD		
MATERIAL: FUSED SILICA PER LIGO-D970533-00D	LARGE TELESCOPE MIRROR SUBSTRATE	
DO NOT SCALE DRAWING	SCALE: NTS	SHEET 1 OF 1
	SIZE: B	DRAWING NUMBER: LIGO-D970586-03-D