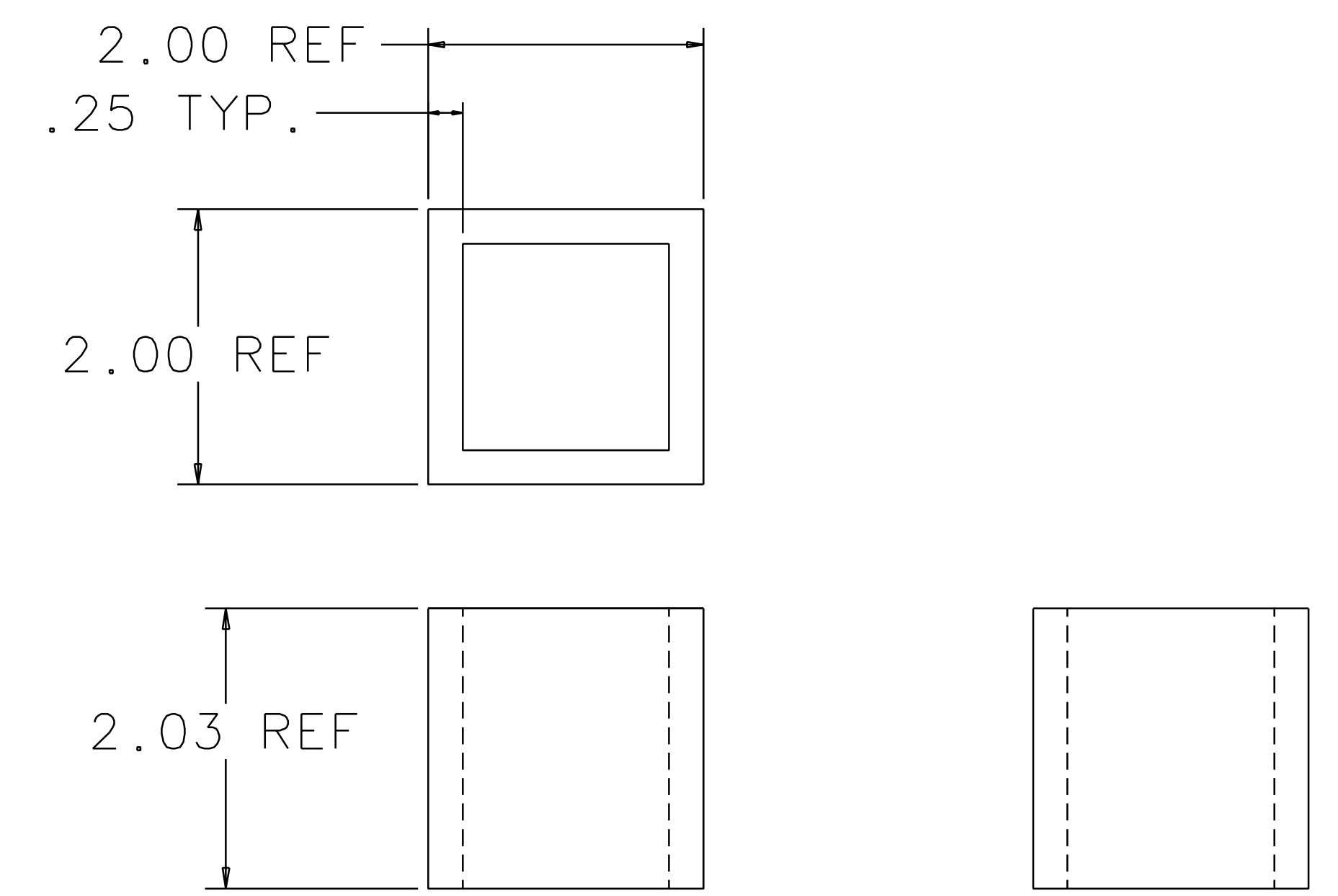
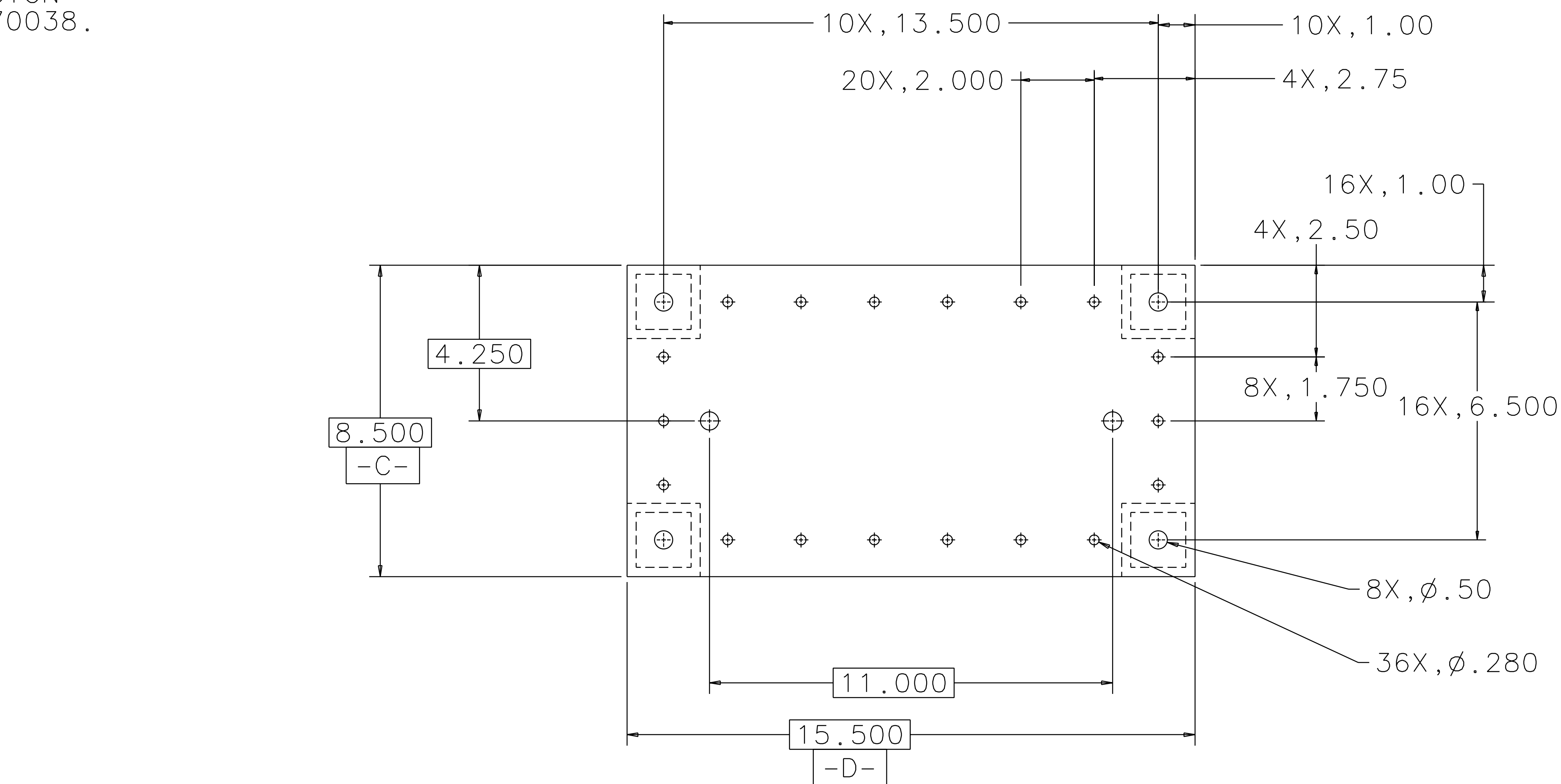
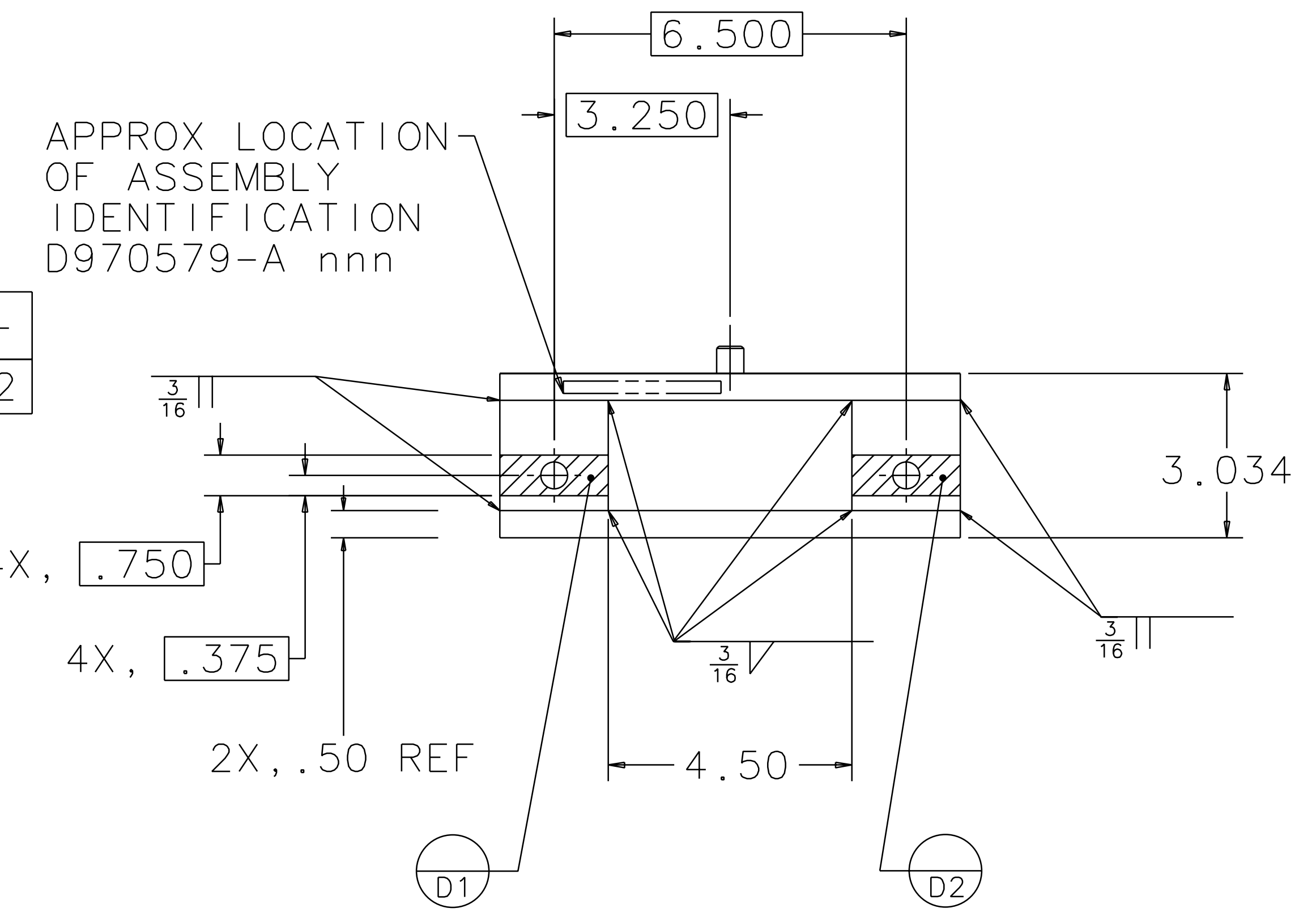
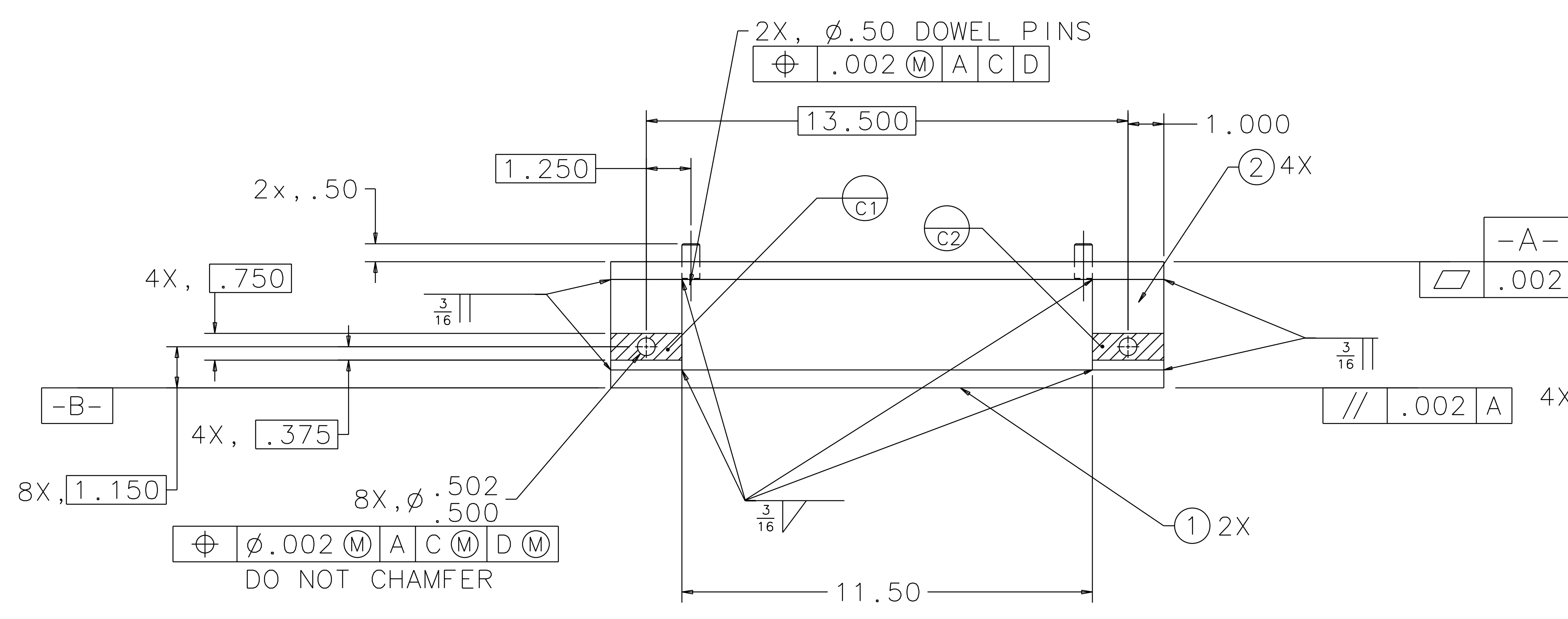


NOTES: (UNLESS OTHERWISE SPECIFIED)  
 1. BREAK ALL SHARP EDGES.  
 2. SPECIFICATIONS FOR THE CONSTRUCTION OF THIS ASSEMBLY ARE COVERED IN THE LARGE OPTIC SUSPENSION SPECIFICATION, LIGO E970038.

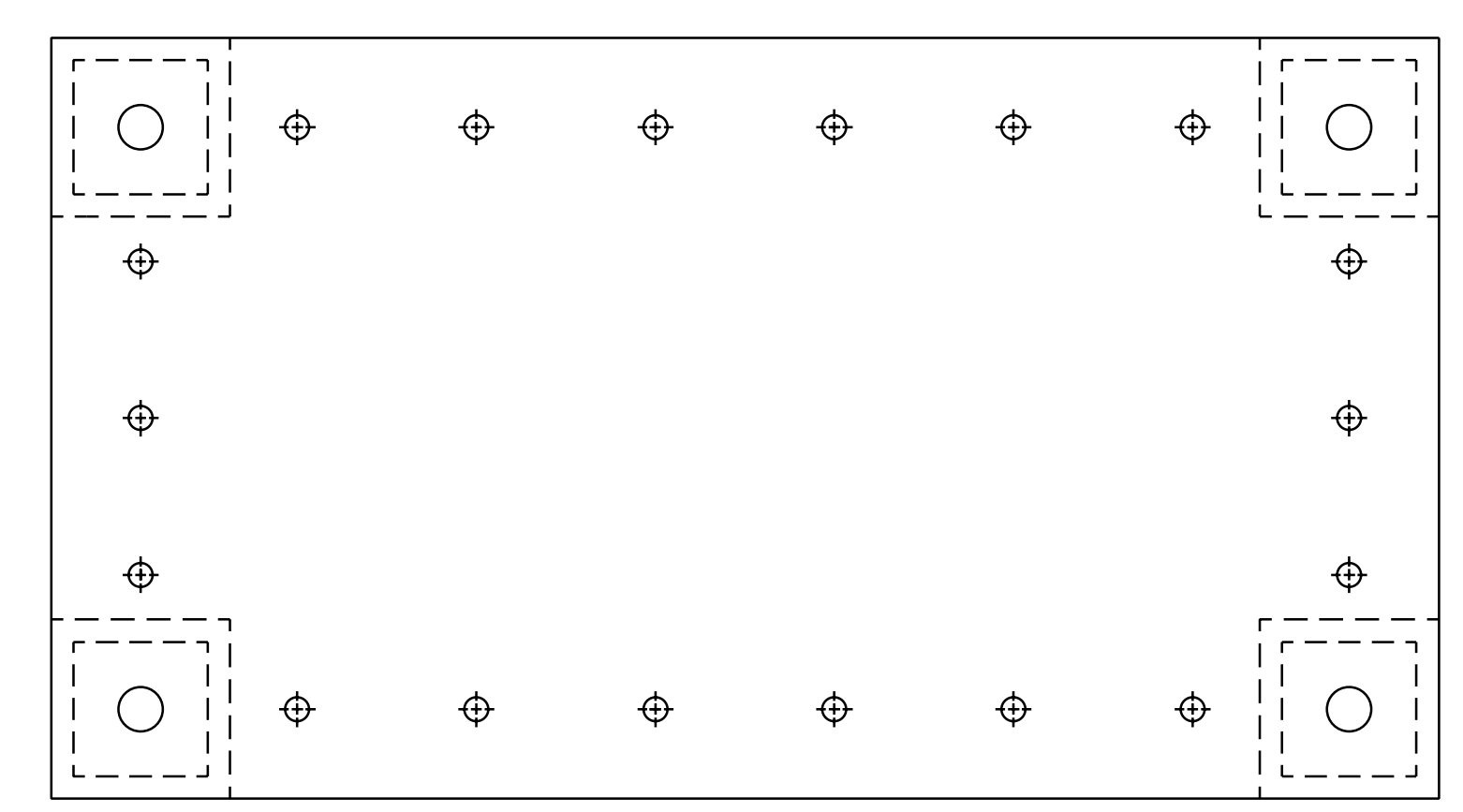
REV	DATE	DRAWN BY	CHECKED	DOC	DCN/DESCRIPTION
A	6-19-98	J. HAZEL			E980089/INITIAL RELEASE



LEG DETAIL  
SCALE 1/1



APPROX LOCATION OF ASSEMBLY IDENTIFICATION D970579-A nnn



4	LEGS: 2.0 x 2.0 x .25 WALL THICKNESS	304 STAINLESS	2
2	PLATES: 15.50 x 8.50 x .50	304 STAINLESS	1
PARTS LIST			
UNLESS OTHERWISE SPECIFIED DIMENSIONS ARE IN INCHES TOLERANCES ARE: FRACTIONS DECIMALS ANGLES 0.XX=±0.01 0.XXX=±0.005 ANGLES=±0.5°		APPROVALS	DATE
DO NOT SCALE DRAWING		J. Hazel	1/98
MATERIAL 304 STAINLESS		L I G O CALIFORNIA INSTITUTE OF TECHNOLOGY MASSACHUSETTS INSTITUTE OF TECHNOLOGY	
FINISH SEE NOTES		TITLE LOS1e HEIGHT ADAPTER, RECYCLING MIRROR 2k	
NEXT ASSEMBLY D970577		SCALE 1/2	
FILE LOCATION /home/dcc/docs/D970579.pdf		REV A	
		SHEET 1 OF 1	