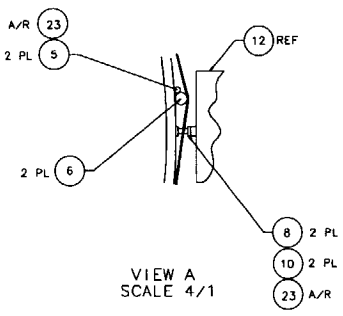
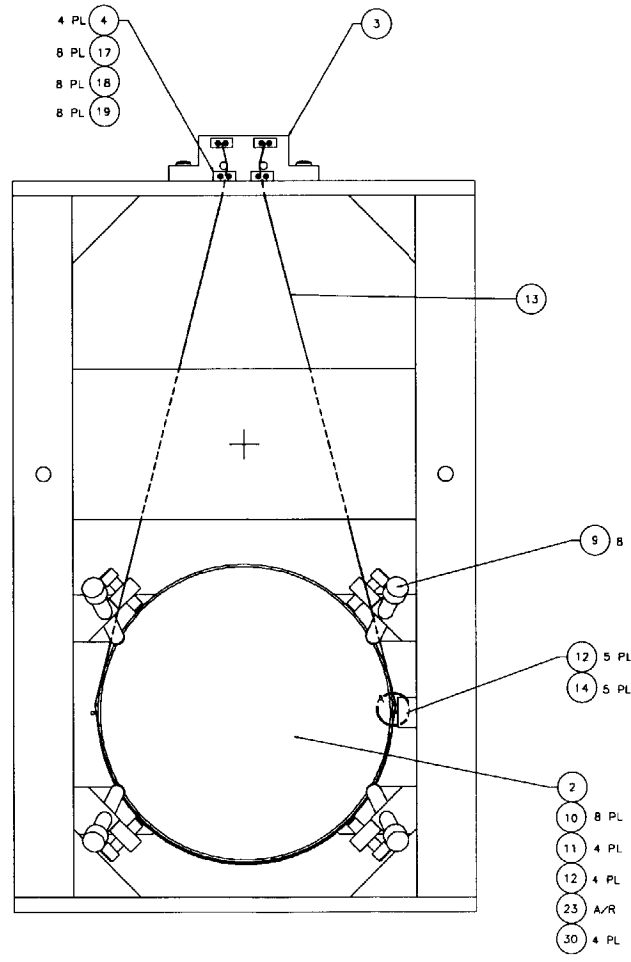
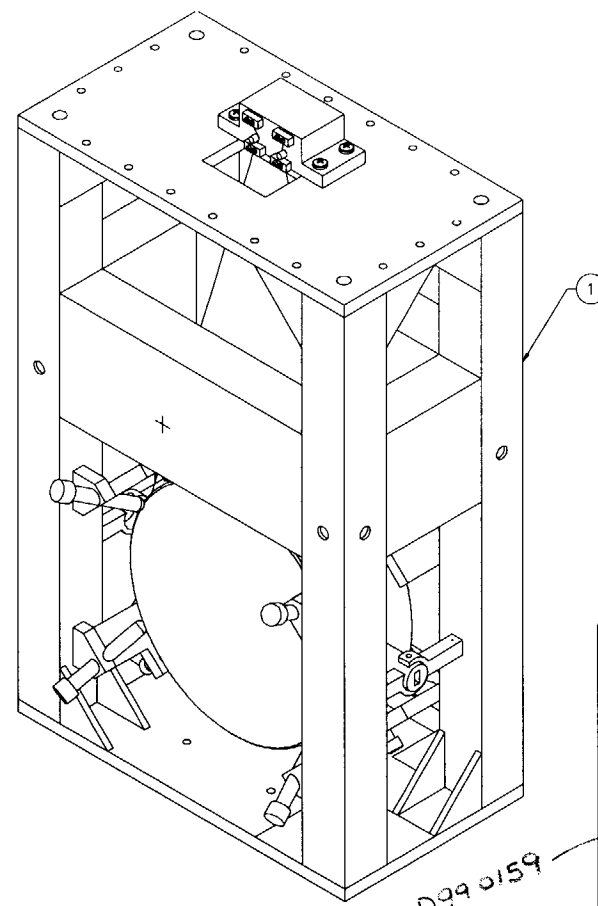
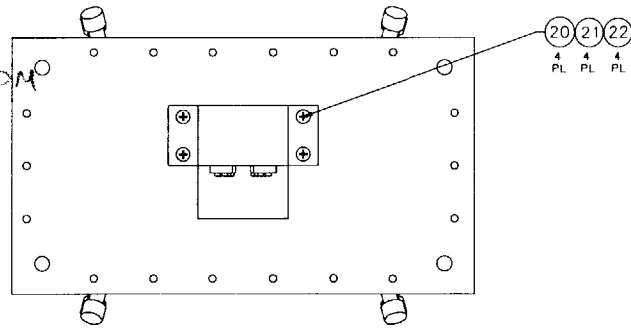
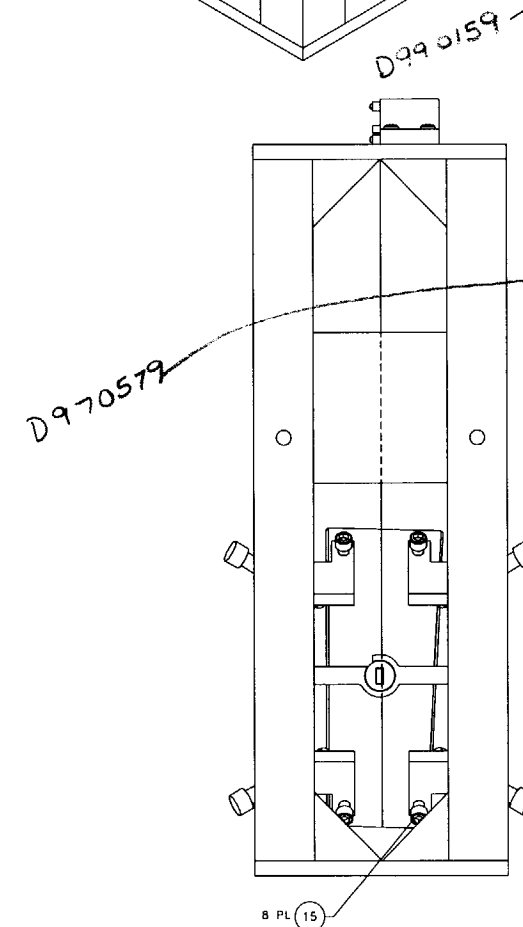


NOTES: (UNLESS OTHERWISE SPECIFIED)
 1. SPECIFICATIONS FOR THE CONSTRUCTION OF THIS ASSEMBLY ARE COVERED IN THE LARGE OPTIC SUSPENSION BALANCING SPECIFICATION, LIGO E970154.
 ② MATERIAL: CONDUCTIVE TEFLON, MANUF. BY FURON-DIXON, 388 METACOM AVE., BRISTOL, RI, 02809, (401)253-2000, AND DESIGNATED BY THE NAME FURON-DIXON COMPOUND 1042.
 ③ HEIGHT ADAPTER IS NOT SHOWN FOR CLARITY. IT IS BOLTED TO THE TOP SURFACE OF THE LOS STRUCTURE ASSEMBLY USING THE HARDWARE ITEM NOS. 25-28. INSTRUCTIONS INCLUDED IN LIGO E970154.



D990186 SIDE BLOCKS, EMM MMT 3, 2K

| ITEM | DESCRIPTION | QTY | UNIT |
|---------|--|-----|--------------------|
| D970180 | WINCH FIXTURE | 41 | |
| D960761 | FIXTURE, LIFTING | 40 | |
| D970074 | FIXTURE, MCKET-TO-DUMPELL STANDOFF | 39 | |
| D960763 | FIXTURE, TEST MASS | 38 | |
| D960752 | FIXTURE, OPTICAL LEVELER | 37 | |
| D960753 | FIXTURE, WIRE AND OPTICS | 36 | |
| D960147 | FIXTURE, GUIDE ROD | 35 | |
| D960050 | FIXTURE, MAGNET/STANDOFF ASSY | 34 | |
| D970169 | MAGNET STRENGTH FIXTURE | 33 | |
| D970616 | COIL STRENGTH FIXTURE | 32 | |
| | | 31 | |
| D970615 | PAM SCREW | 30 | |
| | | 29 | |
| 18 | 1/4-20 x 1.5 LG SHCS | 28 | STAINLESS, Ag PLTD |
| 18 | 1/4-20 LOCK WASHER | 27 | STAINLESS, Ag PLTD |
| 18 | 1/4-20 FLAT WASHER | 26 | STAINLESS, Ag PLTD |
| 19 22 | JE Comp N-2620-A 1/4-20 HEX NUT | 25 | STAINLESS, Ag PLTD |
| 1 | D960145 HEIGHT ADAPTER, Losle | 24 | ② 2 |
| A/R | EPOXY, VAC-SEAL | 23 | |
| 4 | COMMERCIAL EQUIV NAS62041BL WASHER, FLAT, #1/4 | 22 | STAINLESS |
| 4 | COMMERCIAL EQUIV MS3538-139 WASHER, SPLIT LOCK, #1/4 | 21 | STAINLESS |
| 4 | U-C COMPONENTS P/N C-2018-NA SCREW, SHCS, 1/4-20 x 1.00 | 20 | STAINLESS, Ag PLTD |
| 8 | COMMERCIAL EQUIV NAS62041 WASHER, FLAT, #1/4 | 19 | STAINLESS |
| 8 | COMMERCIAL EQUIV MS3538-135 WASHER, SPLIT LOCK, #1/4 | 18 | STAINLESS |
| 8 | U-C COMPONENTS P/N C-2018-NA SCREW, SHCS, 4-40 x 2.50 | 17 | STAINLESS, Ag PLTD |
| | 40B Los Safetystop | 16 | |
| 8 | D990690 SCREW, HEX HEAD, 3/8-16 x 1.50 | 15 | ② |
| 6 | U-C COMPONENTS P/N T-1003-NA SET SCREW, SOCKET, 10-32 x .188 | 14 | STAINLESS, Ag PLTD |
| A/R | WIRE, .0120/- .0003" | 13 | MUSIC WIRE |
| 5 | D960138 SENSOR/ACTUATOR HEAD ASSEMBLY | 12 | |
| 4 | D970075 DUMPELL STANDOFF | 11 | |
| 10 | D960501 MAGNET | 10 | |
| 8 | D960499 LOS CHAMFER STOP | 9 | |
| 2 | D960149 LOS SIDE STANDOFF | 8 | |
| | | 7 | |
| 2 | D960755 LOS LARGE WIRE STANDOFF | 6 | |
| 1 | D960146 LOS GUIDE ROD | 5 | |
| 4 | D960134 LOS CLAMP, SUSPENSION BLOCK | 4 | |
| 1 | D960144 LOS SUSPENSION BLOCK | 3 | MMT 3, 2K |
| 1 | OPTIC, .025cm x 10cm THICK | 2 | END TEST MASS |
| 1 | D960133 LOS STRUCTURE ASSEMBLY | 1 | |



| APPROVALS | DATE | FILE |
|-------------|------|------|
| J. H. Z. B. | 5/96 | |

DO NOT SCALE DRAWING

FILE LOCATION: name/dcc/doc/d960132.pdf

FINISH: N/A

SCALE: 1/2"

SHEET: 1 OF 1

| REV | DATE | DRWN BY | CHECKED | DOC | DESCRIPTION |
|-----|---------|-----------|-----------|-----|---------------------------|
| A | 1/19/96 | Hostetler | L. Turner | | E980004/INITIAL RELEASE |
| B | 4/2/98 | C. Conley | | | E980071/UPDATE PARTS LIST |

7 REDLINE D970578