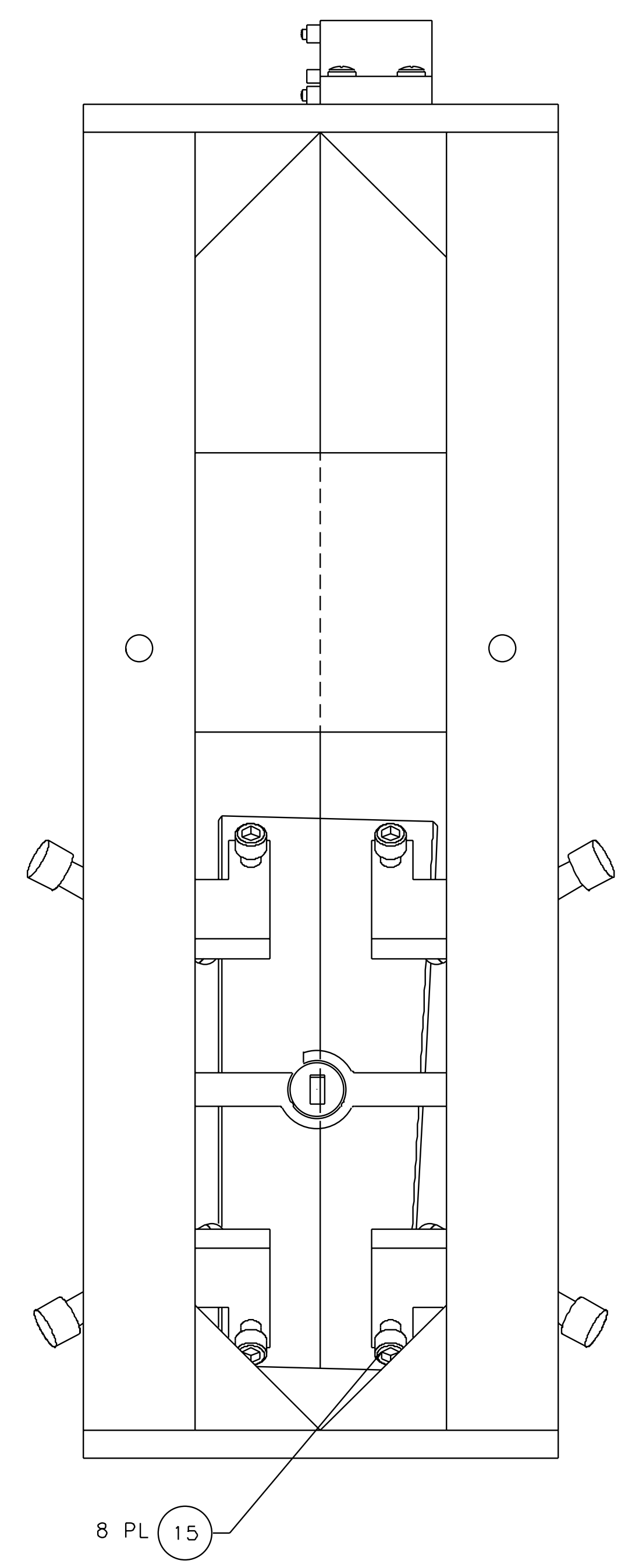
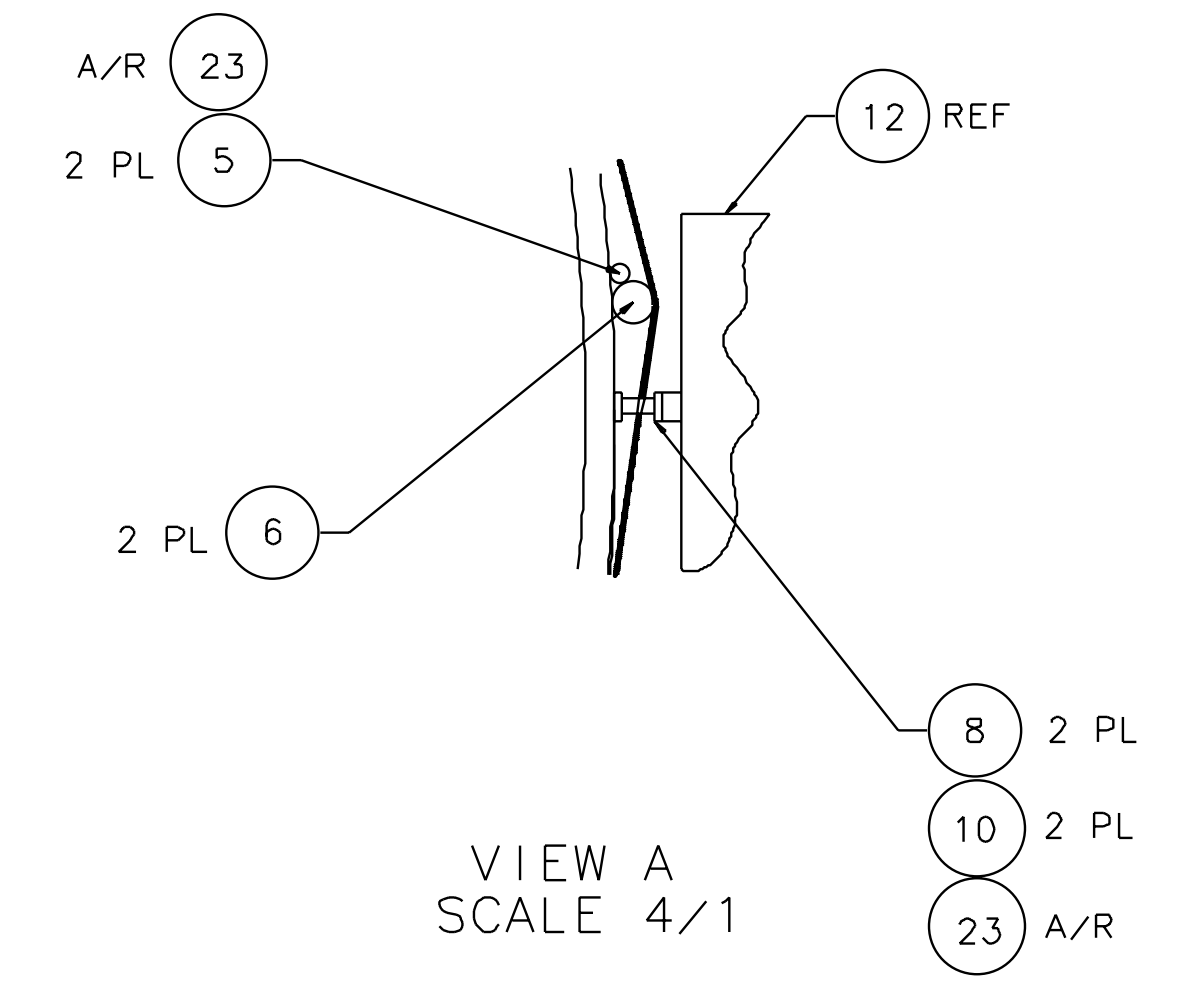
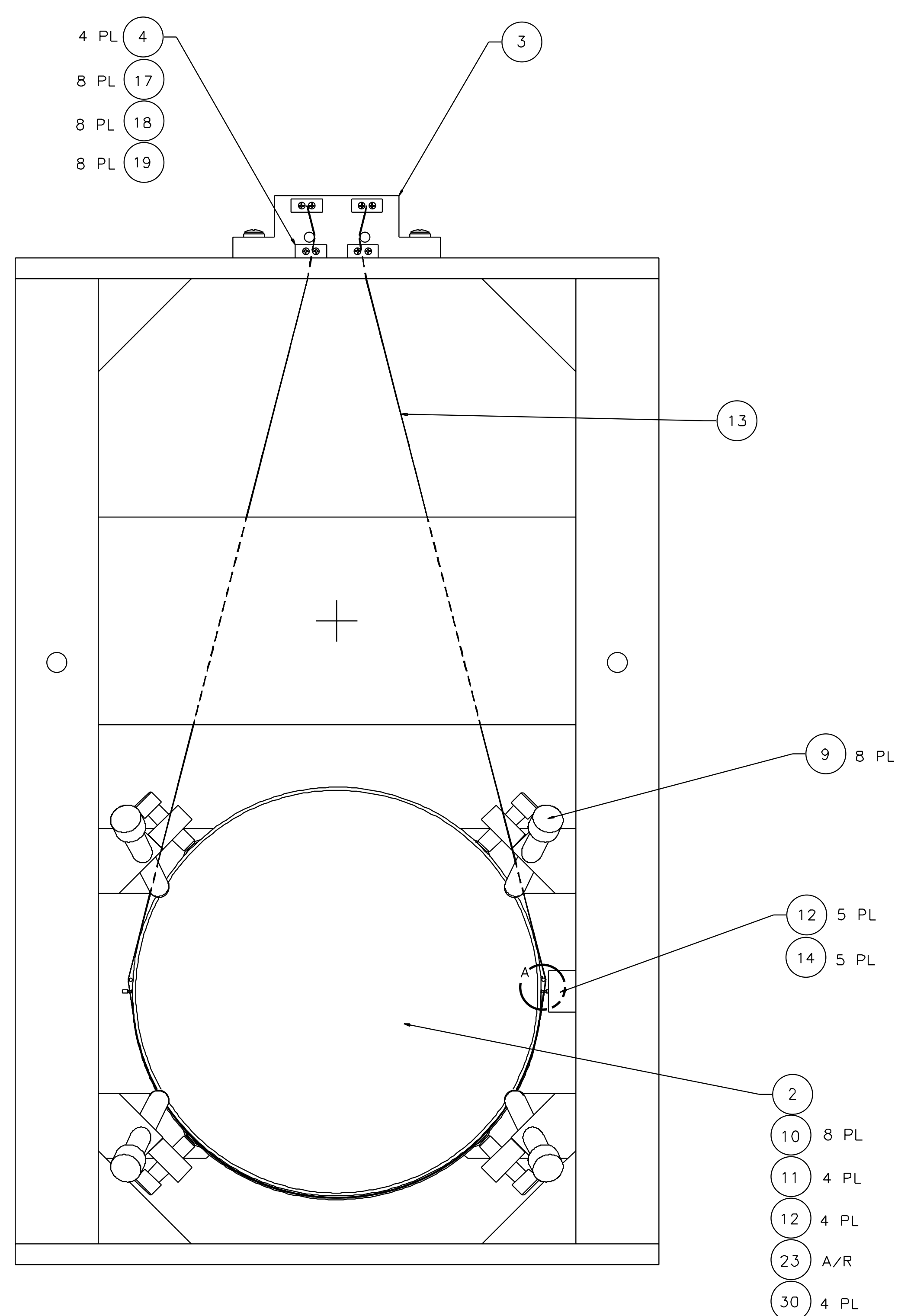
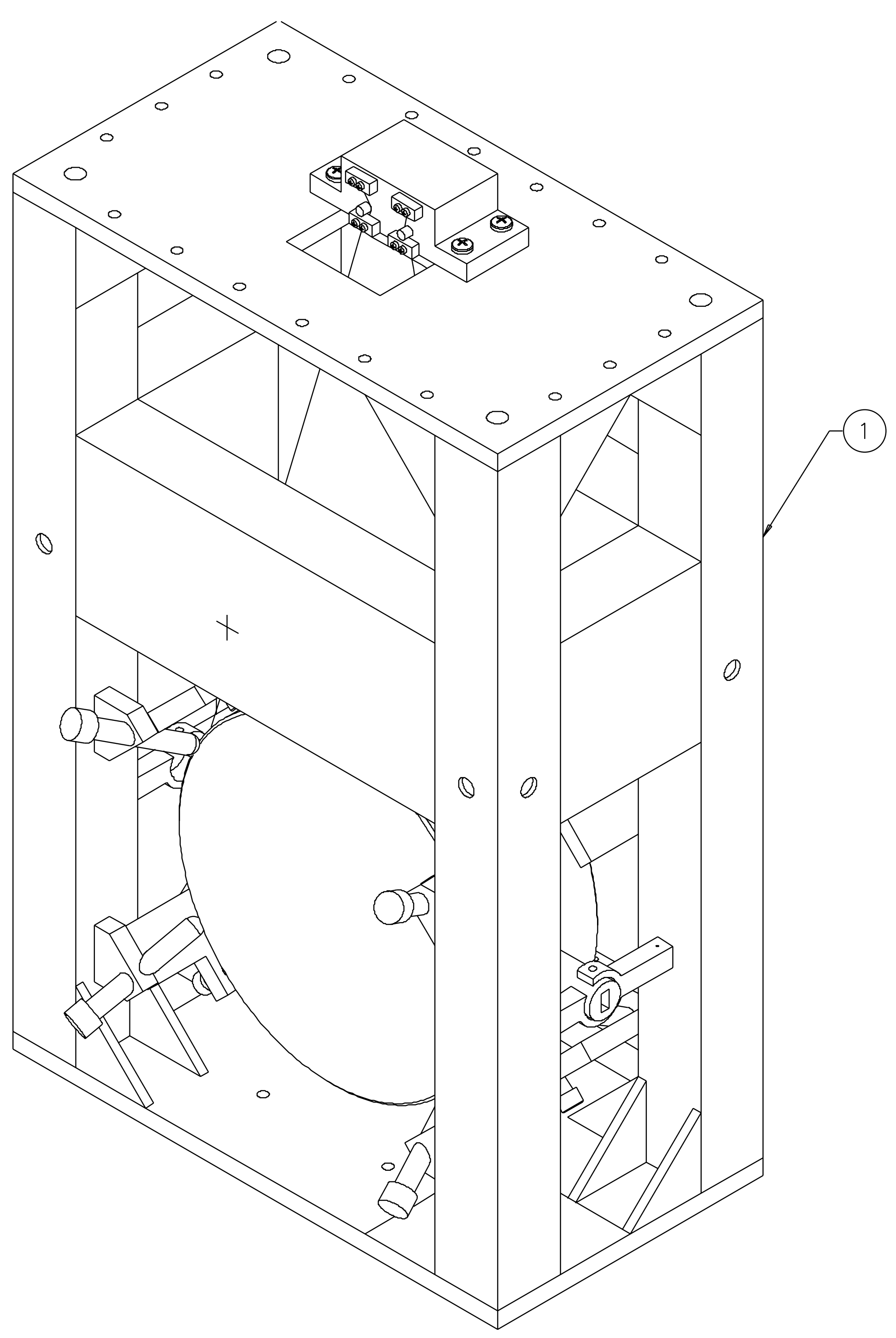
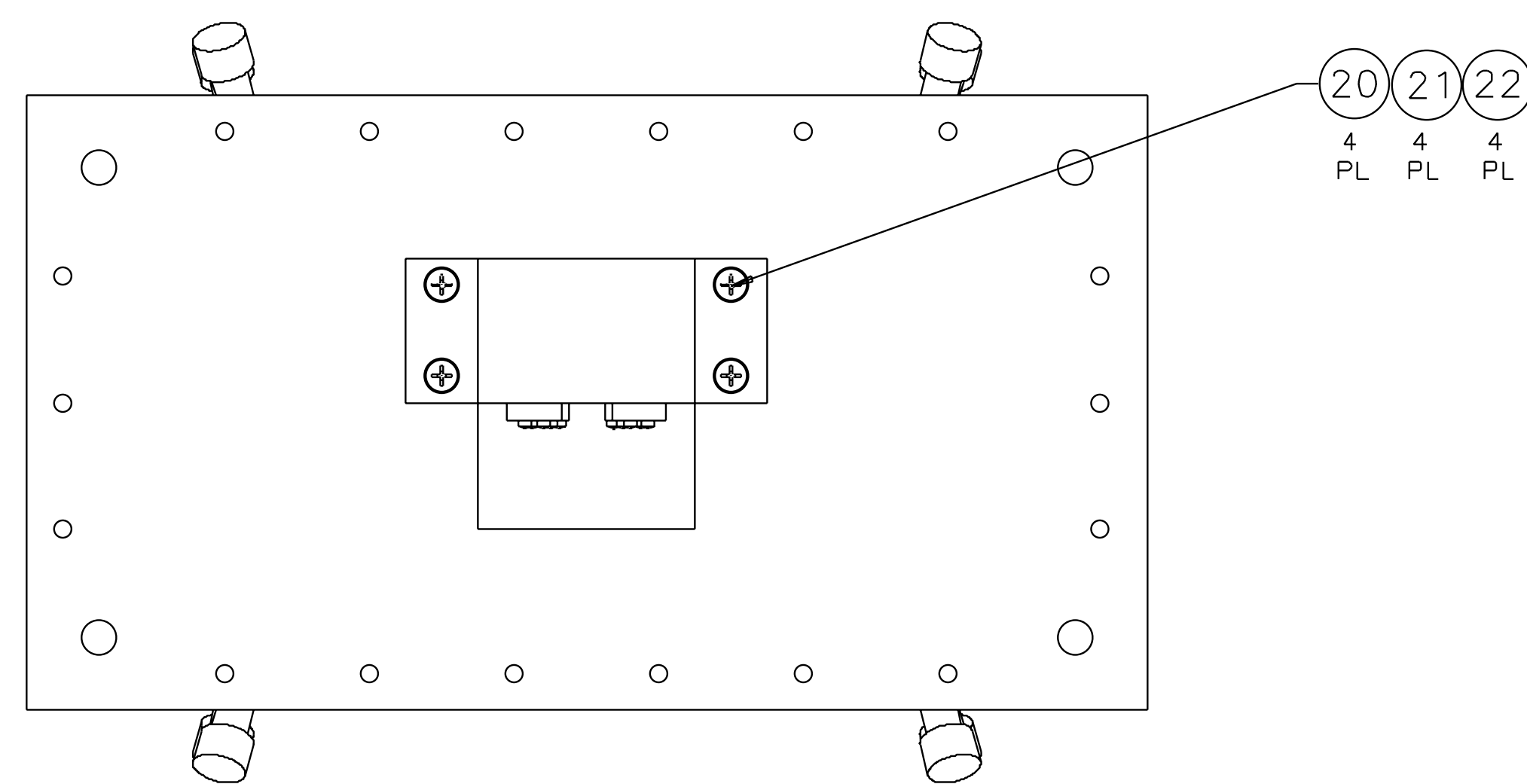


NOTES: (UNLESS OTHERWISE SPECIFIED)
 1. SPECIFICATIONS FOR THE CONSTRUCTION OF THIS ASSEMBLY ARE COVERED IN THE LARGE OPTIC SUSPENSION BALANCING SPECIFICATION, LIGO E970154.
 HEIGHT ADAPTER IS NOT SHOWN FOR CLARITY. IT IS BOLTED TO THE BOTTOM OF THE LOS STRUCTURE ASSEMBLY USING THE HARDWARE ITEM NOS. 25-28. INSTRUCTIONS INCLUDED IN LIGO E970154.

REV	DATE	DRAWN BY	CHECKED	DCC	DCN/DESCRIPTION
A	4/27/01	J. Romie			E010077/INITIAL RELEASE



QTY	REQD	PART OR IDENTIFYING NO	DESCRIPTION	MATERIAL SPECIFICATION	ITEM NO
					41
					40
					39
					38
		D990186	SIDE BLOCKS, ETM, MMT3, FM		37
		D970180	WINCH FIXTURE		36
		D960753	FIXTURE, WIRE AND OPTICS		35
		D960147	FIXTURE, GUIDE ROD		34
		D990159	FIXTURE, MAGNET/STAND. GLUING		33
		D970169	MAGNET STRENGTH FIXTURE		32
		D970616	COIL STRENGTH FIXTURE		31
		D970615	PAM SCREW		30
					29
					28
					27
					26
					25
					24
					23
					22
					21
					20
					19
					18
					17
					16
					15
					14
					13
					12
					11
					10
					9
					8
					7
					6
					5
					4
					4
					3
					2
					1
					1

UNLESS OTHERWISE SPECIFIED DIMENSIONS ARE IN INCHES TOLERANCES ARE FRACTIONS DECIMALS ANGLES	APPROVALS	DATE	TITLE
DO NOT SCALE DRAWING	J. Hozeil	5/96	LIGO CALIFORNIA INSTITUTE OF TECHNOLOGY MASSACHUSETTS INSTITUTE OF TECHNOLOGY
NEXT ASSEMBLY			
FILE LOCATION			
MATERIAL			
FINISH			
SCALE			

FINAL	N/A	N/A	N/A	N/A	N/A
SCALE 1/2	SIZE E	REV A	SHEET 1 OF 1		