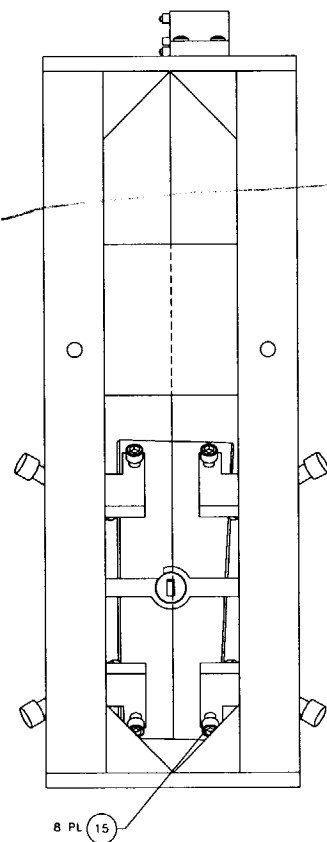
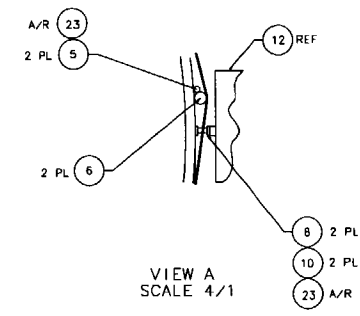
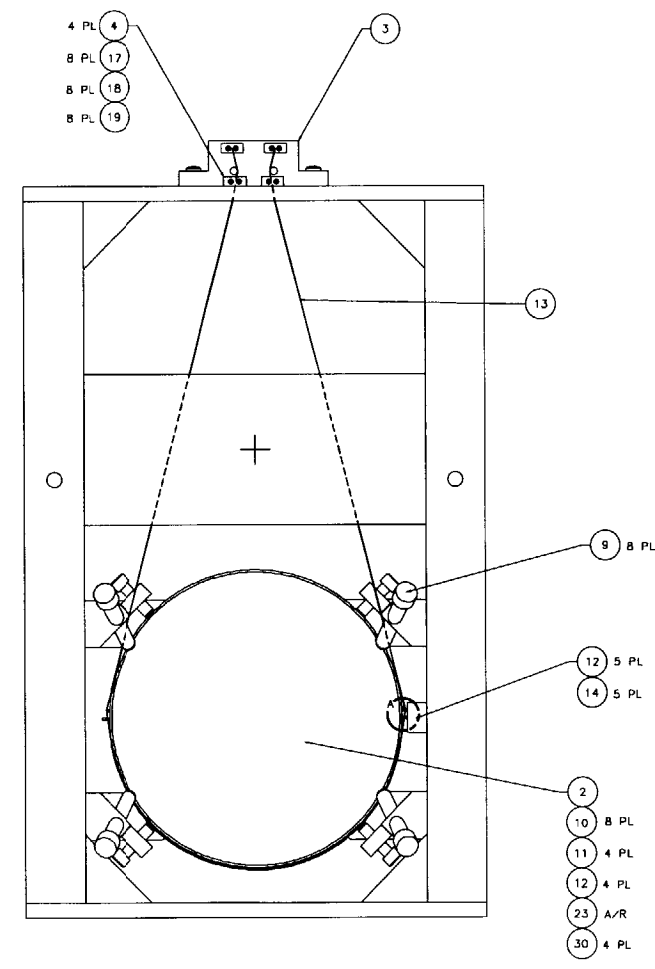
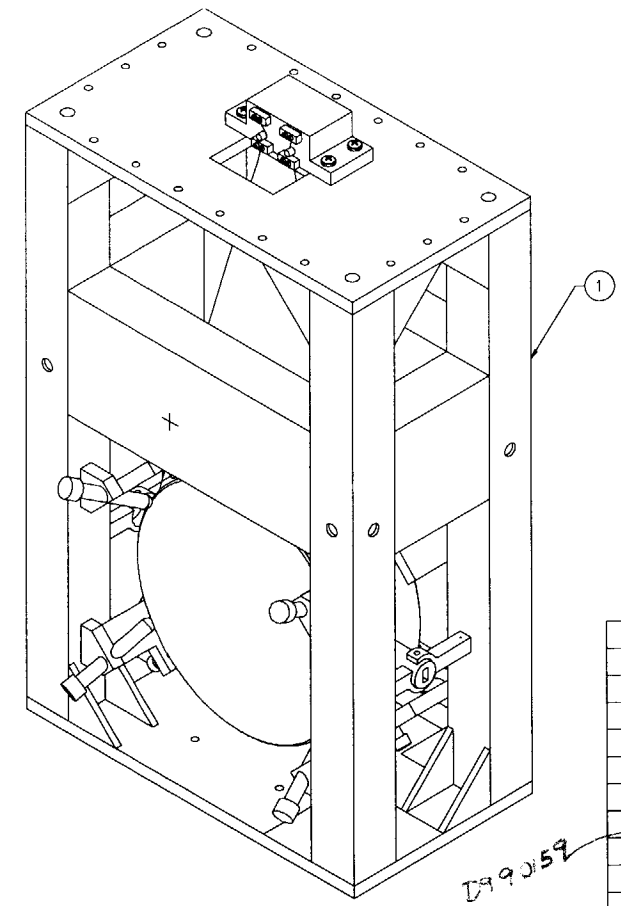
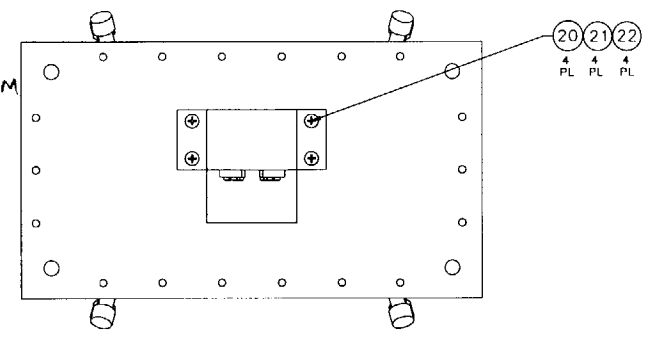


NOTES: (UNLESS OTHERWISE SPECIFIED)
 1. SPECIFICATIONS FOR THE CONSTRUCTION OF THIS ASSEMBLY ARE COVERED IN THE LARGE OPTIC SUSPENSION BALANCING SPECIFICATION, LIGO E970154.
 ② MATERIAL: CONDUCTIVE TEFLON, MANUF. BY FURON-DIXON, 386 METACOM AVE., BRISTOL, RI, 02809, (401)253-2000, AND DESIGNATED BY THE NAME FURON-DIXON COMPOUND 1042.
 ③ HEIGHT ADAPTER IS NOT SHOWN FOR CLARITY. IT IS BOLTED TO THE TOP BOTTOM OF THE LOS STRUCTURE ASSEMBLY USING THE HARDWARE ITEM NOS. 25-28. INSTRUCTIONS INCLUDED IN LIGO E970154.



D990186 SIDE BLOCKS, E-M, MMT3 FM

ITEM NO.	DESCRIPTION	QUANTITY	UNIT
D970180	WINCH FIXTURE	41	
D960761	FIXTURE, LISTING	40	
D970074	FIXTURE, MAGNET-TO-DUMPELL STANDOFF	39	
D960763	FIXTURE, TEST MASS	38	
D960752	FIXTURE, OPTICAL LEVELER	37	
D960753	FIXTURE, WIRE AND OPTICS	36	
D960147	FIXTURE, GUIDE ROD	35	
D960050	FIXTURE, MAGNET/STANDOFF	34	
D970169	MAGNET STRENGTH FIXTURE	33	
D970616	COIL STRENGTH FIXTURE	32	
		31	
D970615	PAM SCREW	30	
		29	
18	1/4-20 x 1.5 LG SHCS	28	STAINLESS, Ag PLTD
18	1/4-20 LOCK WASHER	27	STAINLESS, Ag PLTD
18	1/4-20 FLAT WASHER	26	STAINLESS, Ag PLTD
18	1/4-20 HEX NUT	25	STAINLESS, Ag PLTD
1	HEIGHT ADAPTER, LOSIC	24	
A/R	EPOXY, VAC-SEAL	23	
4	COMMERCIAL EQUIV WASHER, FLAT, #1/4	22	STAINLESS
4	COMMERCIAL EQUIV WASHER, SPLIT LOCK, #1/4	21	STAINLESS
4	U-C COMPONENTS P/N C-2016-NA	20	STAINLESS, Ag PLTD
8	COMMERCIAL EQUIV WASHER, FLAT, #4	19	STAINLESS
8	COMMERCIAL EQUIV WASHER, SPLIT LOCK, #4	18	STAINLESS
8	U-C COMPONENTS P/N C-2016-NA	17	STAINLESS, Ag PLTD
8	Los Safety Stop SCREW, HEX HEAD, 3/8-16 x 1.50	16	
6	U-C COMPONENTS P/N T-1003-NA	15	STAINLESS, Ag PLTD
A/R	WIRE, #.0120/- .0003"	13	MUSIC WIRE
5	D960138	12	SENSOR/ACTUATOR HEAD ASSEMBLY
4	D970075	11	DUMPELL STANDOFF
10	D960501	10	MAGNET
8	D960499	9	LOS CHAMFER STOP
2	D960149	8	LOS SIDE STANDOFF
		7	
2	D960755	6	LOS LARGE WIRE STANDOFF
1	D960146	5	LOS GUIDE ROD
4	D960134	4	LOS CLAMP, SUSPENSION BLOCK
1	D960144	3	LOS SUSPENSION BLOCK
1	OPTIC, #25cm x 10cm THICK	2	
1	D960133	1	LOS STRUCTURE ASSEMBLY

APPROVALS DATE 5/96
 LIGO CALIFORNIA INSTITUTE OF TECHNOLOGY
 MASSACHUSETTS INSTITUTE OF TECHNOLOGY
 LARGE OPTIC SUSPENSION ASSEMBLY (LOS10)
 FOR END TEST MASS MMT3A 4K
 D960132
 SCALE 1/2" = 1"

REDLINE D978561