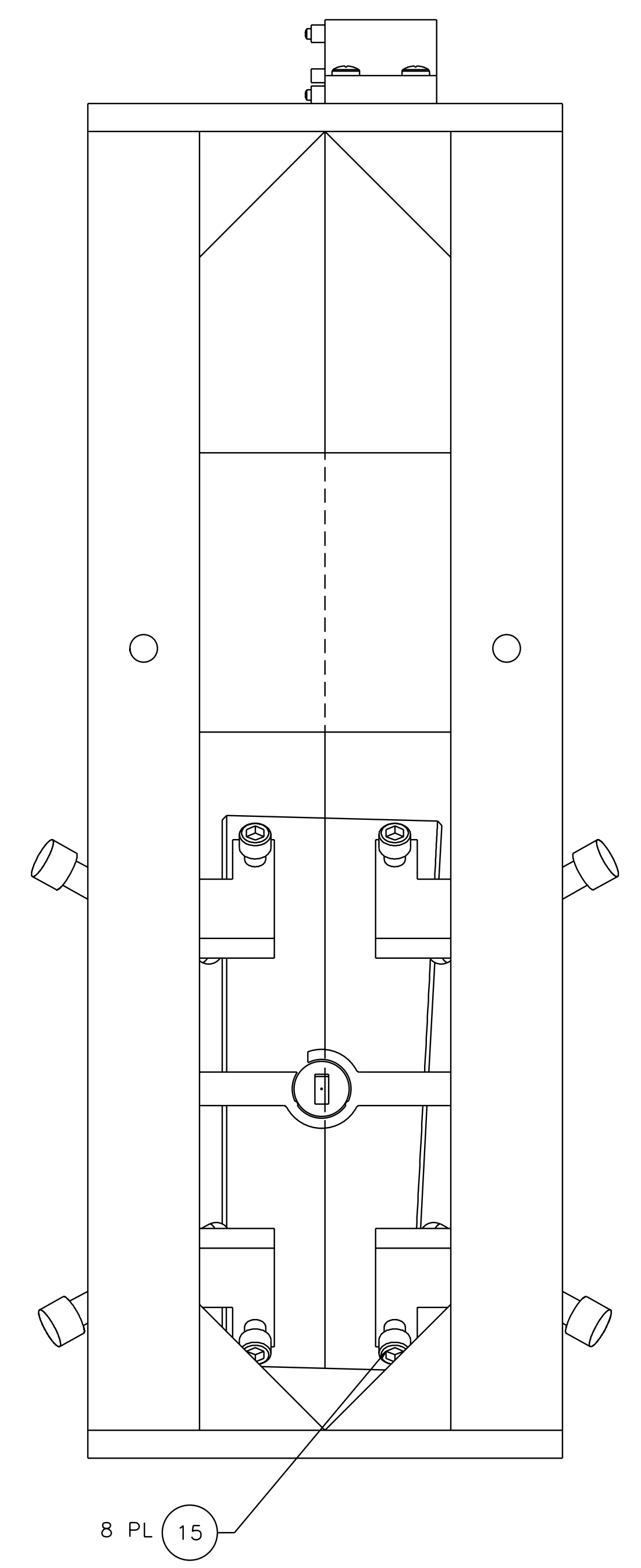
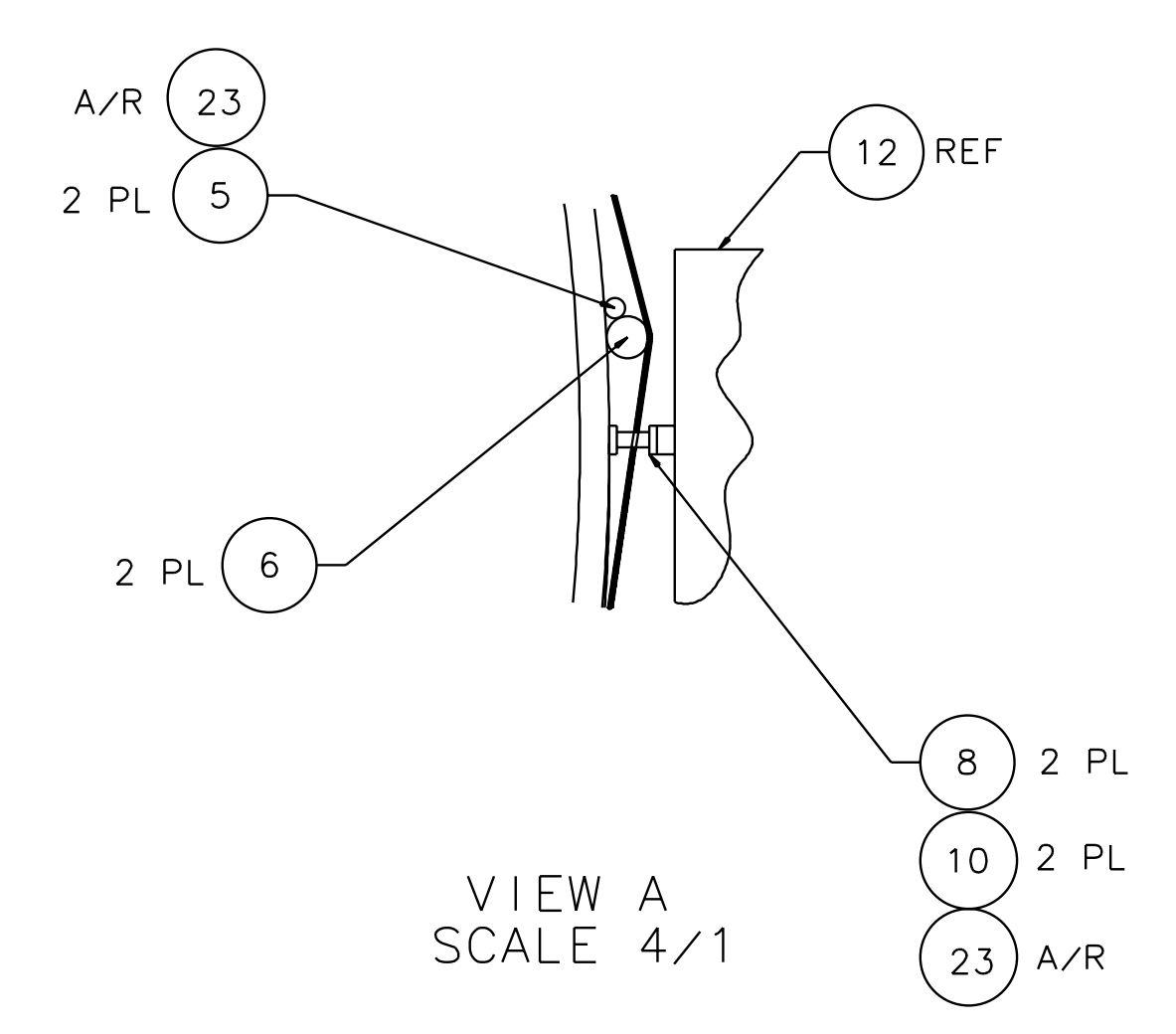
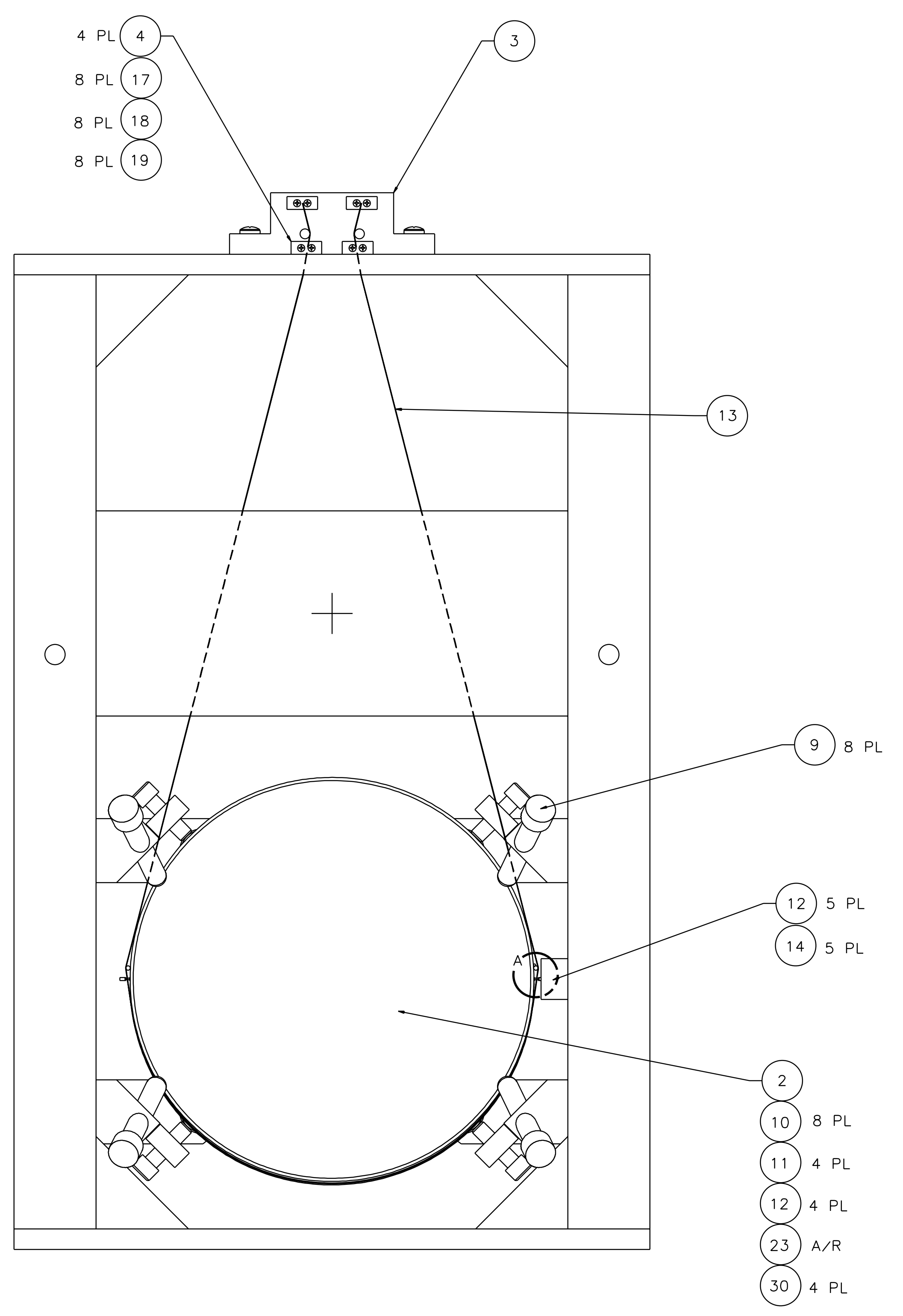
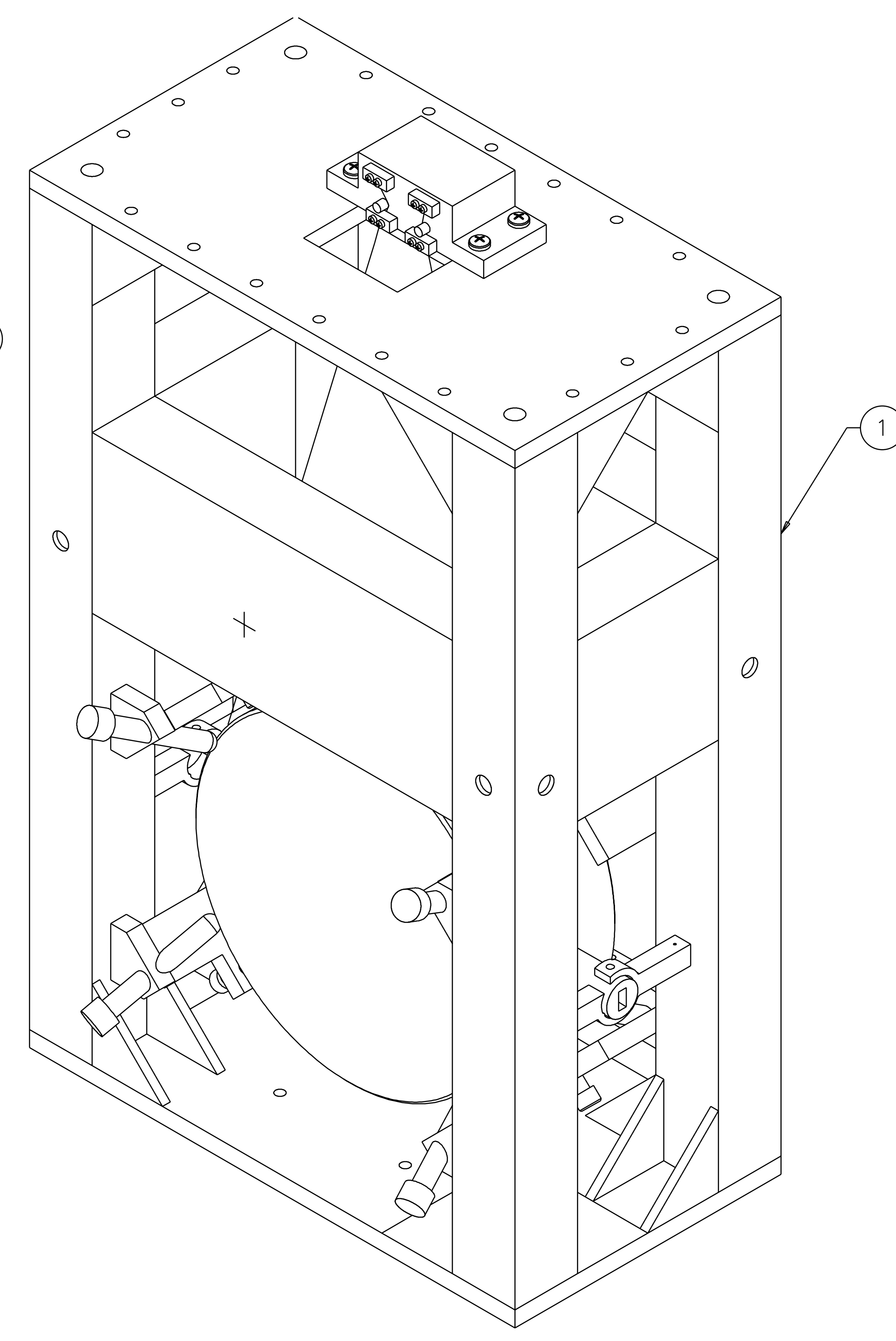
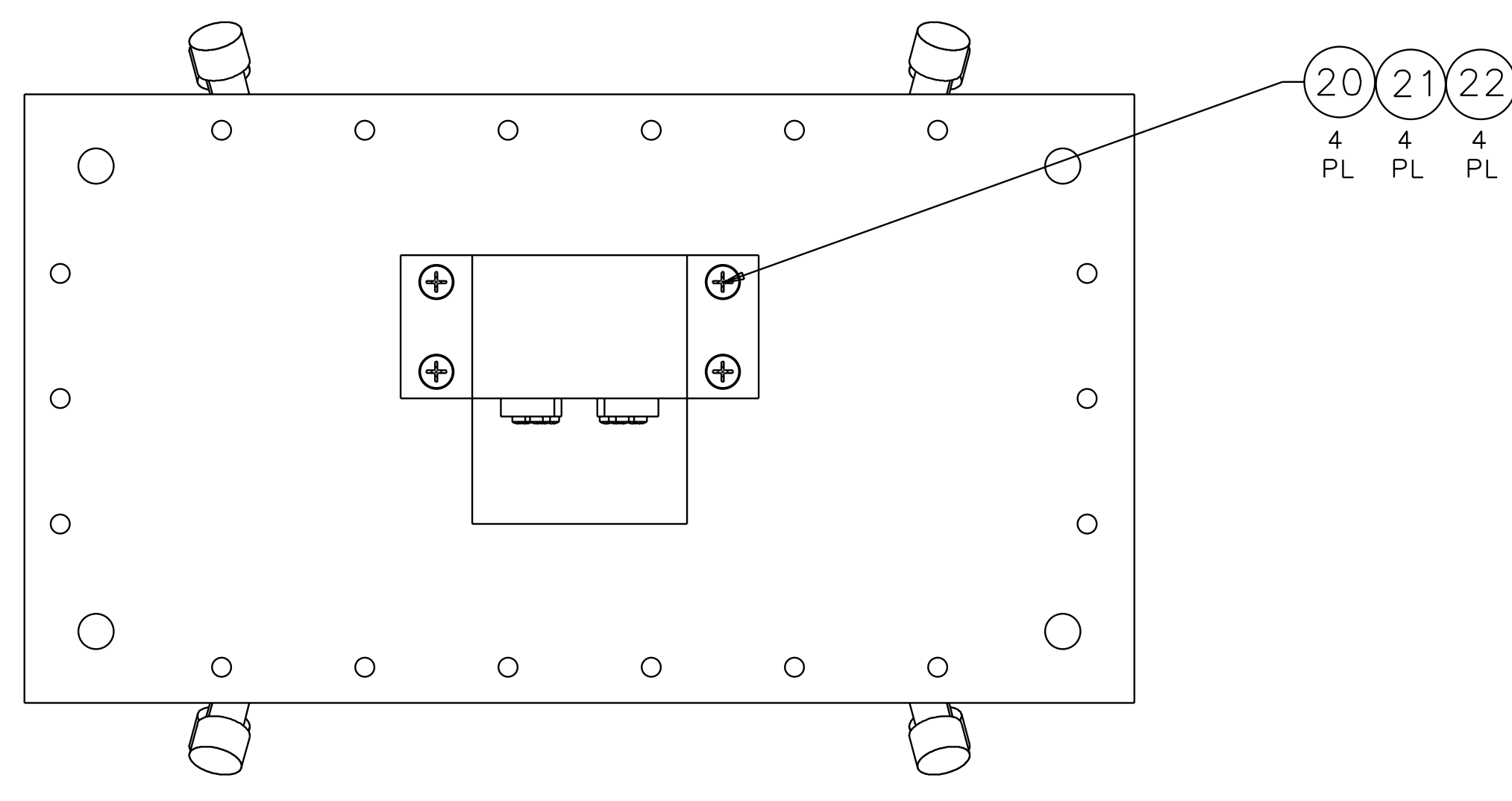


NOTES: (UNLESS OTHERWISE SPECIFIED)  
 1. SPECIFICATIONS FOR THE CONSTRUCTION OF THIS ASSEMBLY ARE COVERED IN THE LARGE OPTIC SUSPENSION BALANCING SPECIFICATION, LIGO E970154. HEIGHT ADAPTER IS NOT SHOWN FOR CLARITY. IT IS BOLTED TO THE TOP OF THE LOS STRUCTURE ASSEMBLY USING THE HARDWARE ITEM NOS. 25-28. INSTRUCTIONS INCLUDED IN LIGO E970154.

| REV | DATE    | DRAWN BY | CHECKED | DCC       | DCN/DESCRIPTION         |
|-----|---------|----------|---------|-----------|-------------------------|
| A   | 4/8/98  | J. Hozel |         | L. Turner | E980077/INITIAL RELEASE |
| B   | 4/20/01 | J. Romie |         |           | E010077/INCRP. REV A1   |



| QTY | PART OR IDENTIFYING NO.      | NOMENCLATURE OR DESCRIPTION      | MATERIAL SPECIFICATION | ITEM NO. |
|-----|------------------------------|----------------------------------|------------------------|----------|
|     |                              |                                  |                        | 41       |
|     |                              |                                  |                        | 40       |
|     |                              |                                  |                        | 39       |
|     | D990187                      | SIDE BLOCKS, ITM,4K              |                        | 38       |
|     | D970180                      | WINCH FIXTURE                    |                        | 37       |
|     | D960753                      | FIXTURE, WIRE AND OPTICS         |                        | 36       |
|     | D970574                      | FIXTURE, GUIDE ROD, ITM, 4K      |                        | 35       |
|     | D990159                      | FIXTURE, MAGNET/STAND, GLUING    |                        | 34       |
|     | D970169                      | MAGNET STRENGTH FIXTURE          |                        | 33       |
|     | D970616                      | COIL STRENGTH FIXTURE            |                        | 32       |
|     |                              |                                  |                        | 31       |
|     | D970615                      | PAM SCREW                        |                        | 30       |
|     |                              |                                  |                        | 29       |
| 18  |                              | 1/4-20 x 1.5 LG SHCS             | STAINLESS              | 28       |
| 18  |                              | 1/4-20 LOCK WASHER               | STAINLESS              | 27       |
| 18  |                              | 1/4-20 FLAT WASHER               | STAINLESS              | 26       |
| 18  | U-C COMPONENTS P/N N-2520-A  | 1/4-20 HEX NUT                   | STAINLESS, Ag PLTD     | 25       |
| 1   | D960145                      | HEIGHT ADAPTER                   | (2)                    | 24       |
| A/R |                              | EPOXY, VAC-SEAL                  |                        | 23       |
| 4   | COMMERCIAL EQUIV NAS620416L  | WASHER, FLAT, #1/4               | STAINLESS              | 22       |
| 4   | COMMERCIAL EQUIV MS35338-139 | WASHER, SPLIT LOCK, #1/4         | STAINLESS              | 21       |
| 4   | U-C COMPONENTS P/N C-2016-NA | SCREW, SHCS, 1/4-20 x 1.00       | STAINLESS, Ag PLTD     | 20       |
| 8   | COMMERCIAL EQUIV NAS620C4L   | WASHER, FLAT, #4                 | STAINLESS              | 19       |
| 8   | COMMERCIAL EQUIV MS35338-135 | WASHER, SPLIT LOCK, #4           | STAINLESS              | 18       |
| 8   | U-C COMPONENTS P/N C-408-NA  | SCREW, SHCS, 4-40 x .50          | STAINLESS, Ag PLTD     | 17       |
|     |                              |                                  |                        | 16       |
| 8   | D990690                      | LOS SAFETY STOP                  |                        | 15       |
| 6   | U-C COMPONENTS P/N T-1003-NA | SET SCREW, SOCKET, 10-32 x .188  | STAINLESS, Ag PLTD     | 14       |
| A/R |                              | WIRE, $\phi$ .0120 $\pm$ -.0003* | MUSIC WIRE             | 13       |
| 5   | D960138                      | SENSOR/ACTUATOR HEAD ASSEMBLY    |                        | 12       |
| 4   | D970075                      | DUMBELL STANDOFF                 |                        | 11       |
| 10  | D960501                      | MAGNET                           |                        | 10       |
| 8   | D960499                      | LOS CHAMFER STOP                 |                        | 9        |
| 2   | D960149                      | LOS SIDE STANDOFF                |                        | 8        |
|     |                              |                                  |                        | 7        |
| 2   | D960755                      | LOS LARGE WIRE STANDOFF          |                        | 6        |
| 1   | D960146                      | LOS GUIDE ROD                    |                        | 5        |
| 4   | D960134                      | LOS CLAMP, SUSPENSION BLOCK      |                        | 4        |
| 1   | D960144                      | LOS SUSPENSION BLOCK             |                        | 3        |
| 1   | COATING SPEC E980067         | OPTIC, $\phi$ 25cm x 10cm THICK  | INPUT TEST MASS, 4K    | 2        |
| 1   | D960133                      | LOS STRUCTURE ASSEMBLY           |                        | 1        |

UNLESS OTHERWISE SPECIFIED DIMENSIONS ARE IN INCHES TOLERANCES ARE: FRACTIONS DECIMALS ANGLES

APPROVALS DATE LIGO CALIFORNIA INSTITUTE OF TECHNOLOGY MASSACHUSETTS INSTITUTE OF TECHNOLOGY

DRAWN J. Hozel 5/96 TITLE LARGE OPTIC SUSPENSION ASSEMBLY (LOS1b) FOR INPUT TEST MASS, 4K (ITM, 4K)

CHECKED

DO NOT SCALE DRAWING

NEXT ASSEMBLY FINAL MATERIAL N/A

FILE LOCATION home/dcc/docs/0970560.pdf FINISH N/A

SIZE E D970560 REV B

SCALE 1/2 SHEET 1 OF 1