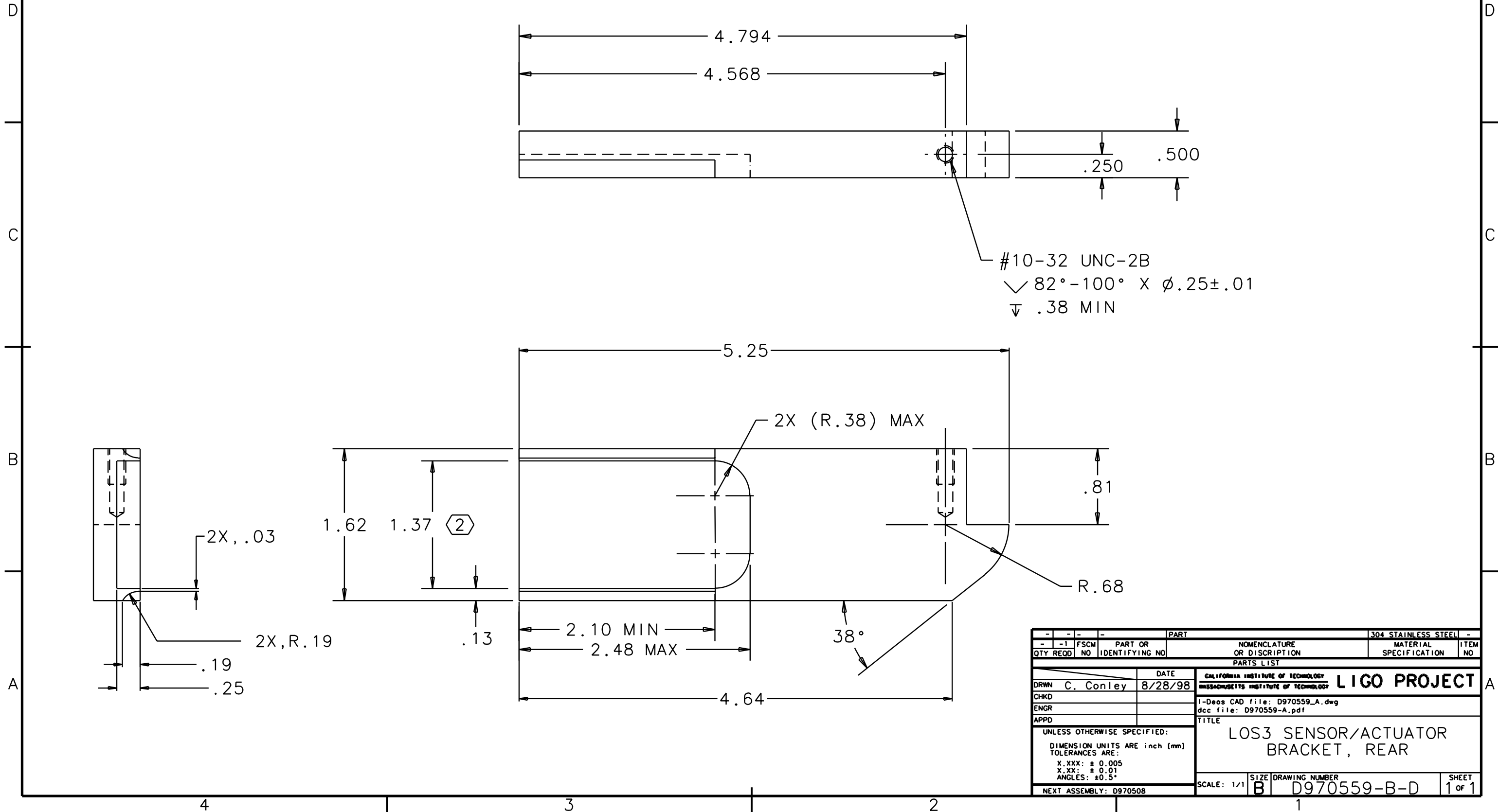


NOTES: (UNLESS OTHERWISE SPECIFIED)
 1. BREAK ALL SHARP EDGES.

2. CHAMFER INSIDE POCKET AS REQUIRED FOR WELDING ON NEXT ASSEMBLY.

REV	DATE	DRAWN BY	CHECKED	DCC	DCN/DESCRIPTION
A	8/28/98	C. Conley			E980218-00/INITIAL RELEASE
B	12/17/01	J. Romie			E010369/ADD J PREP



#10-32 UNC-2B
 ✓ 82°-100° X ϕ .25±.01
 ▽ .38 MIN

QTY REQD	FSCM NO	PART OR IDENTIFYING NO	PART	NOMENCLATURE OR DISCUSSION	MATERIAL SPECIFICATION	ITEM NO
-	-	-	-	-	304 STAINLESS STEEL	-

DRWN	C. Conley	DATE	8/28/98	CALIFORNIA INSTITUTE OF TECHNOLOGY MASSACHUSETTS INSTITUTE OF TECHNOLOGY LIGO PROJECT			
CHKD		1-Deas CAD file: D970559_A.dwg dcc file: D970559-A.pdf					
ENGR		TITLE					
APPD		UNLESS OTHERWISE SPECIFIED: DIMENSION UNITS ARE inch (mm) TOLERANCES ARE: X.XXX: ± 0.005 X.XX: ± 0.01 ANGLES: ±0.5°		LOS3 SENSOR/ACTUATOR BRACKET, REAR			
NEXT ASSEMBLY: D970508				SCALE: 1/1	SIZE: B	DRAWING NUMBER: D970559-B-D	SHEET: 1 of 1