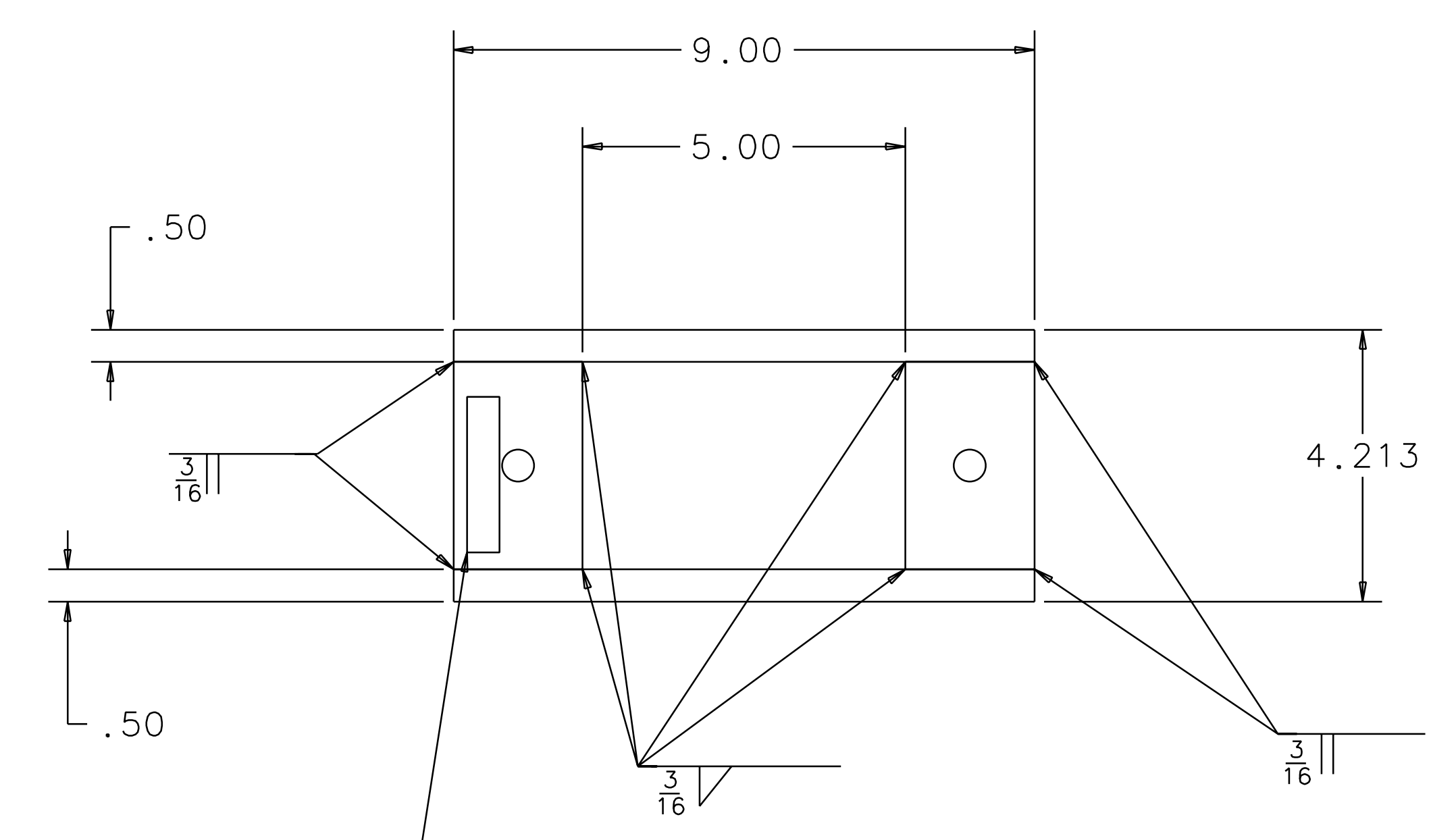
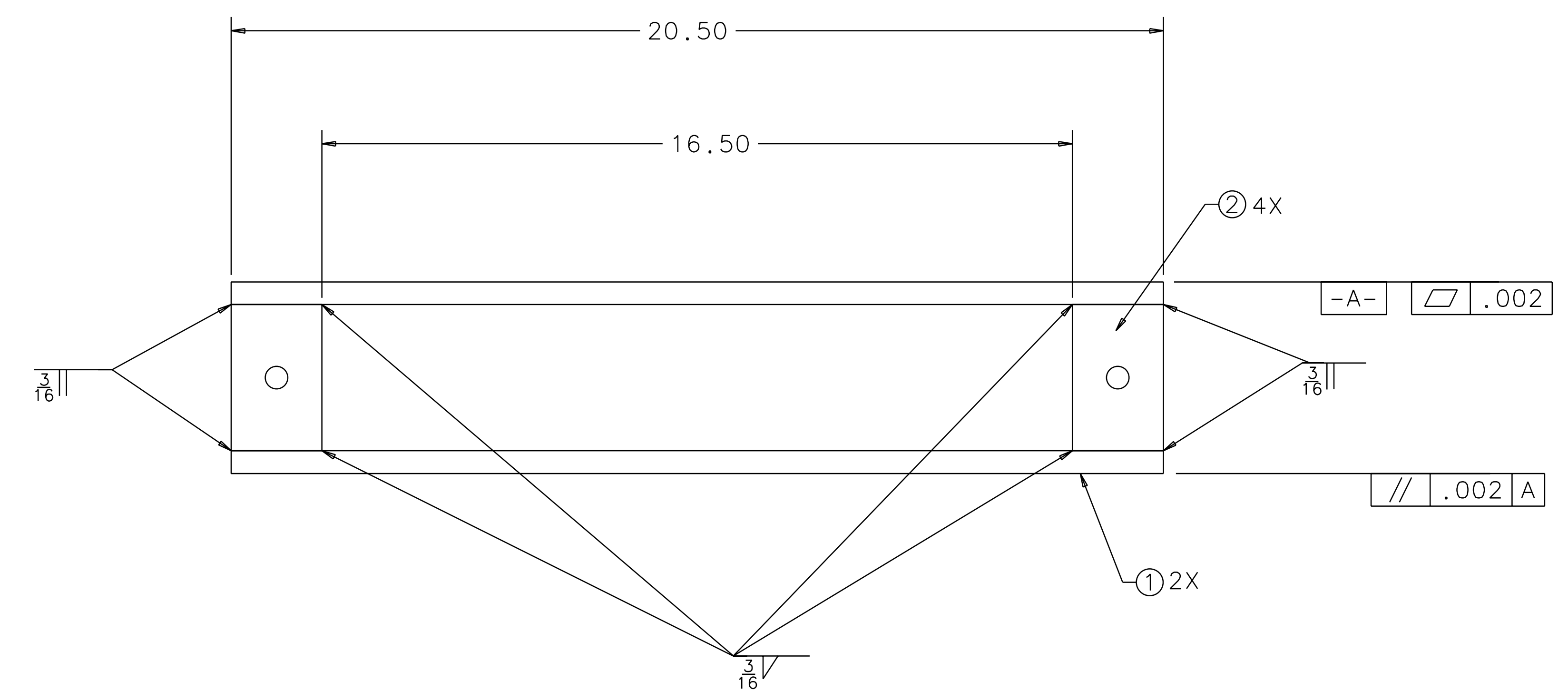
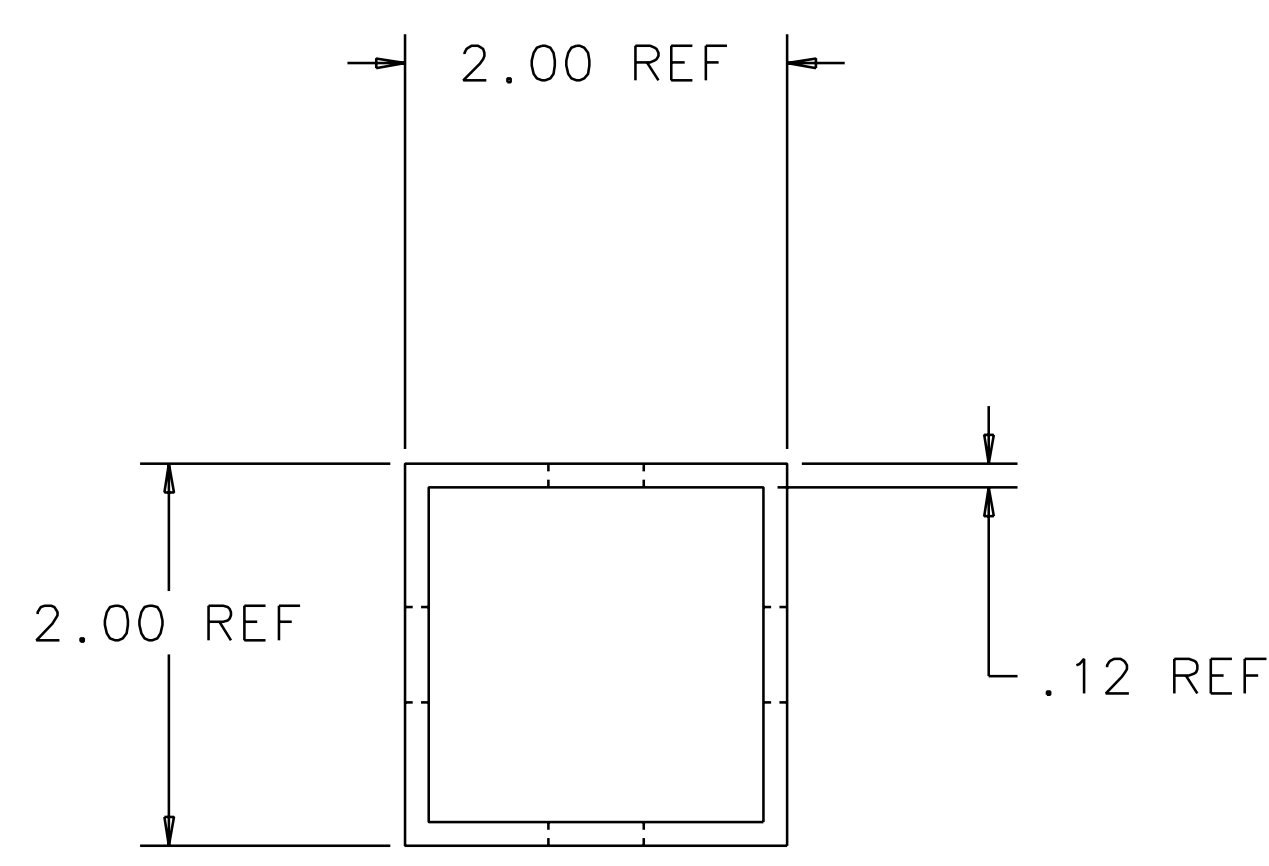
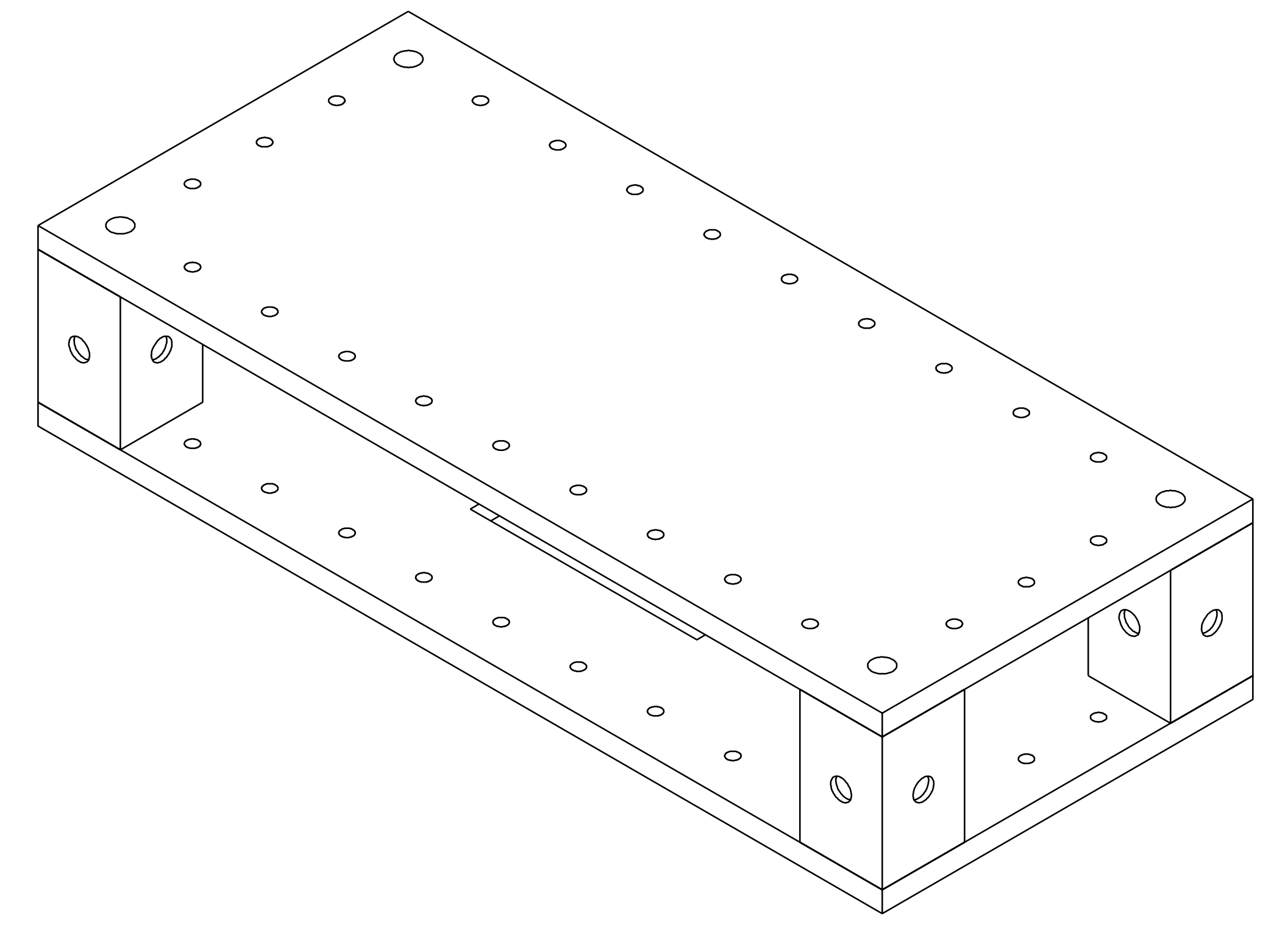
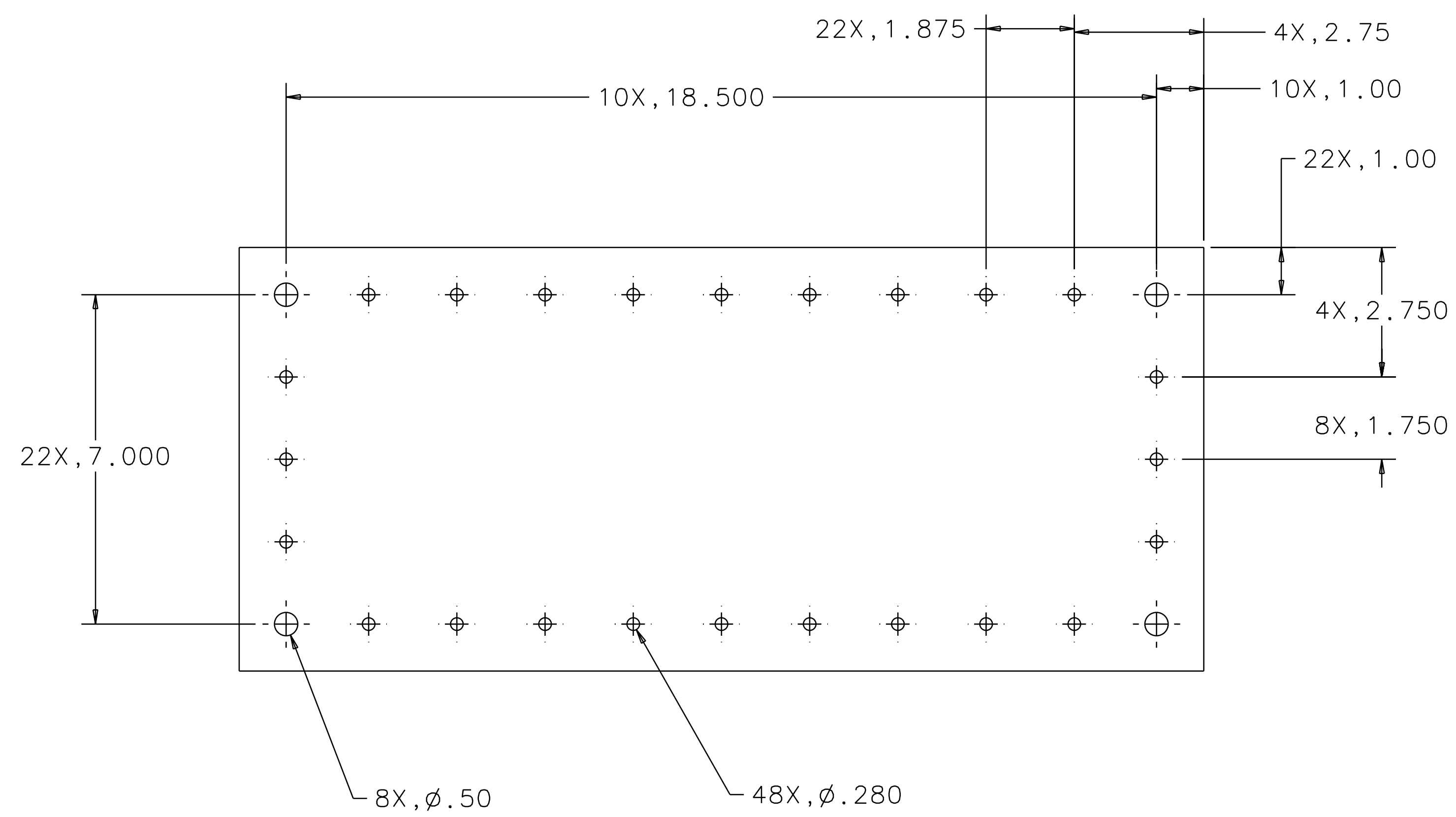
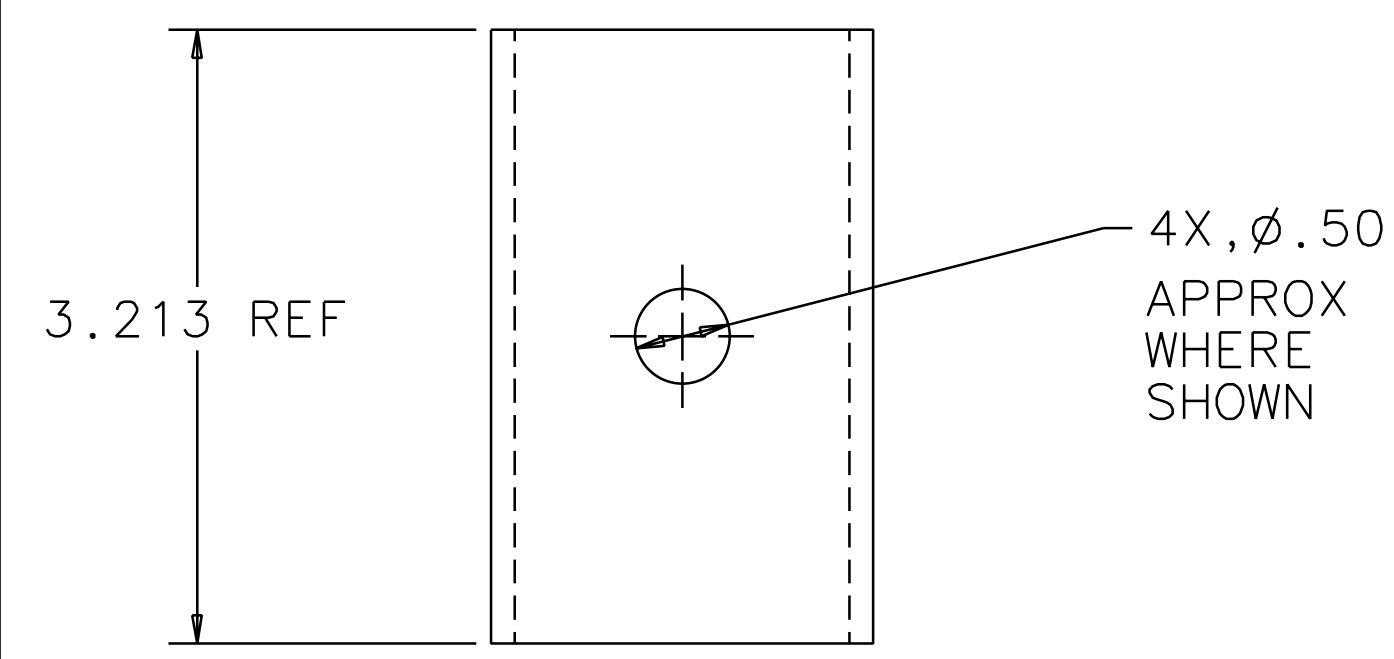


NOTES: (UNLESS OTHERWISE SPECIFIED)
 1. BREAK ALL SHARP EDGES.
 2. SPECIFICATIONS FOR THE CONSTRUCTION OF THIS ASSEMBLY ARE COVERED IN THE LARGE OPTIC SUSPENSION (LOS) STRUCTURAL FABRICATION SPECIFICATION, LIGO-E970038.

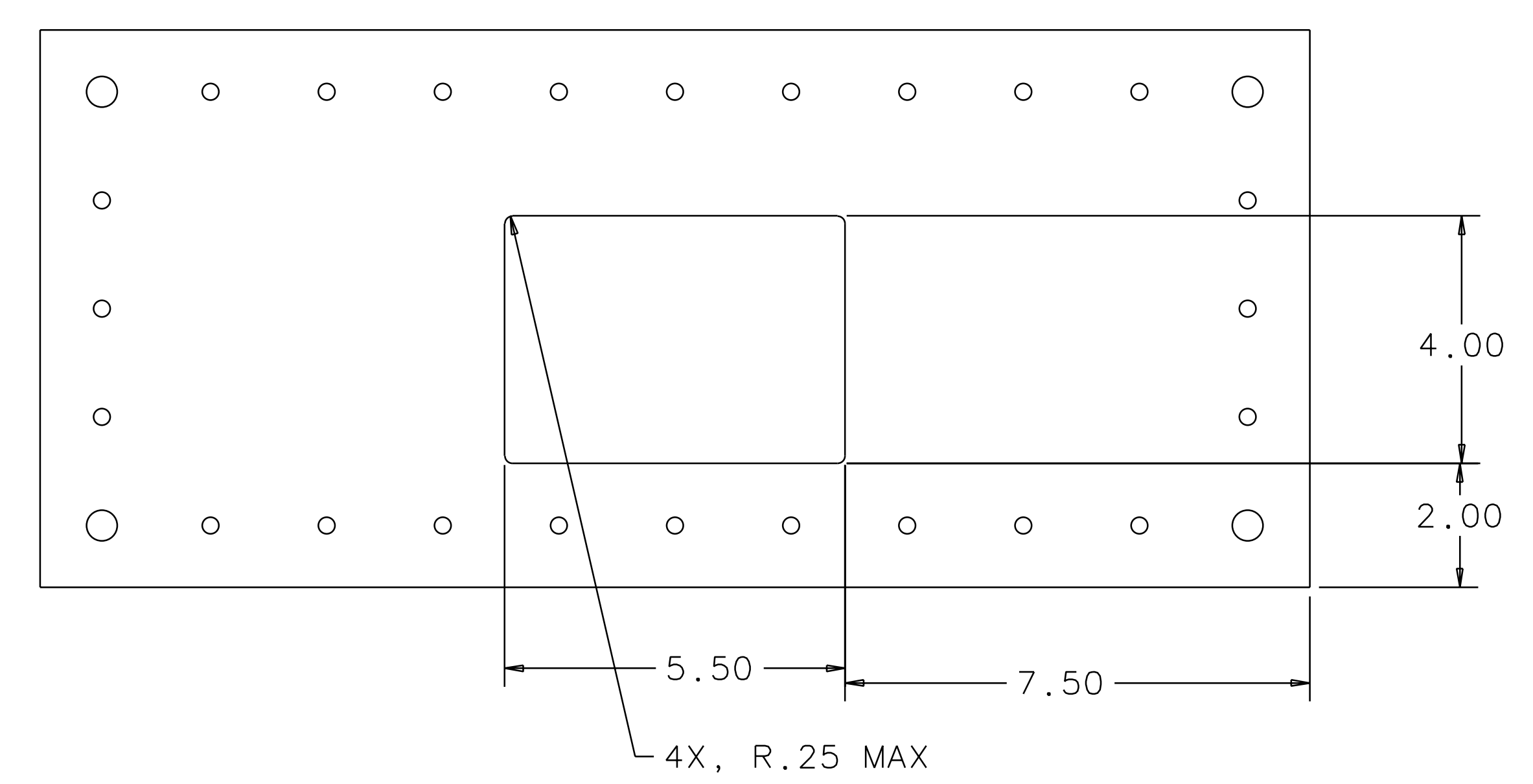
REV	DATE	DRAWN BY	CHECKED	DC	DCN/DESCRIPTION
A	6-19-98	J. Hazel			E980089/INITIAL RELEASE



APPROX LOCATION OF ASSEMBLY IDENTIFICATION D970554-A nnn



LEG DETAIL SCALE 1/1



4	LEGS: 2.0 x 2.0 x .125 WALL THICKNESS	304 STAINLESS	2	
2	PLATES: 20.5 x 9.0 x 0.5 THICK (REF)	304 STAINLESS	1	
QTY REQ	PART OR IDENTIFYING NO	DESCRIPTION OR DESCRIPTION	MATERIAL SPECIFICATION	ITEM NO.
PARTS LIST				
UNLESS OTHERWISE SPECIFIED DIMENSIONS ARE IN INCHES TOLERANCES ARE: FRACTIONS DECIMALS ANGLES .XX = .01 ±.5' .XXX = .005				
APPROVALS		DATE	LIGO CALIFORNIA INSTITUTE OF TECHNOLOGY MASSACHUSETTS INSTITUTE OF TECHNOLOGY	
DRAWN J. Hazel		5/98	TITLE	
CHECKED			LOS2a HEIGHT ADAPTER, BEAMSPLITTER 4k	
DO NOT SCALE DRAWING			SCALE 1/1	
NEXT ASSEMBLY	MATERIAL	FINISH	SCALE	REV
D970505	304 STAINLESS	SEE NOTES	D970554	A
FILE LOCATION			SHEET	1 OF 1
/home/dcc/docs/D970554.pdf				